

Your Source PROTECTIVE COATINGS GUIDE

WHAT TYPE OF PROTECTION DO YOU NEED?

Corrosion

Rust Treatment

Loctite® Extend Coating

Item #	Clear	30539	10.25 oz. net. wt. aerosol
	Liquid		
	Converts from a White	75430	1 quart bottle
	Liquid to	75448	1 gallon bottle
	Matte Black	75465	5 gallon pail

Preventive Protection

NON-DRYING

Loctite® Maxi-Coat™

Item #	51211	12 oz. net wt. aerosol
	51213	1 gallon can

CATHODIC PROTECTION

Loctite® Cold Galvanizing Compound

Item #	82039	15 oz. net. wt. aerosol
--------	-------	-------------------------

UNDERCOATING

Loctite® Heavy-Duty Rubberized Undercoating

Item #	30538	16 oz. net. wt. aerosol
--------	-------	-------------------------

Extreme Chemical Attack

Loctite® Nordbak® Chemical-Resistant Coating

Item #	96092	12 lb. kit
--------	-------	------------

Specialty Coatings

COLOR CODING

Loctite® Color Guard® Coating

Item #	Black	34979	14.5 fl. oz. can
	Black	34980	1 gallon can
	Black	34981*	54 gallon drum
	Blue	34982	14.5 fl. oz. can
	Blue	34983	1 gallon can
	Red	34985	14.5 fl. oz. can
	Red	34986	1 gallon can
	Yellow	34988	14.5 fl. oz. can
	Yellow	34989	1 gallon can

BELT DRESSING

Loctite® Belt Dressing and Conditioner

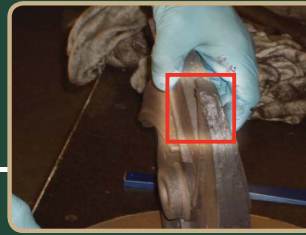
Item #	30527	12 oz. net. wt. aerosol
--------	-------	-------------------------



AUTHORIZED DISTRIBUTOR

1-800-448-0406

Your Source for
COATINGS



**ARE YOU EXPERIENCING MECHANICAL WEAR / ABRASION
OR CORROSION / EROSION?**

Wear / Abrasion

SLIDING ABRASION OR IMPACT RESISTANCE?

Sliding Abrasion

COARSE PARTICLE, FINE PARTICLE OR TURBULENCE?

Coarse / Large Particle Abrasion

**LARGE PARTICLE WEAR
TO 250°F (121°C)**

**Loctite® Nordbak®
Wearing Compound**

Item # 1324008 5 lb. kit
1323940 25 lb. kit

**LARGE PARTICLE WEAR
TO 450°F (232°C)**

**Loctite® Nordbak®
High Temperature
Wearing Compound**

Item # 99112 25 lb. kit

**LARGE PARTICLE WEAR
TO 550°F (288°C)**

**Loctite® Nordbak®
Ultra-High Temperature
Wearing Compound**

Item # 96392 25 lb. kit

**FAST CURING, LARGE PARTICLE
WEAR TO 225°F (107°C)**

**Loctite® Nordbak®
Fast Cure Wearing
Compound**

Item # 96373 6 lb. kit

**COMBINED RESISTANCE
FOR LARGE AND FINE
PARTICLE TO 250°F (121°C)**

**Loctite® Nordbak® Combo
Bead Wearing Compound**

Item # 1324571 6 lb. kit

**LOW ODOR, LARGE PARTICLE
WEAR TO 250°F (121°C)**

**Loctite® Nordbak® Low
Odor Wearing Compound**

Item # 41343 25 lb. kit

Fine Particle Abrasion

**FINE PARTICLE WEAR
TO 250°F (121°C)**

**Loctite® Nordbak®
Pneu-Wear**

Item # 98383 3 lb. kit
98382 25 lb. kit

**FINE PARTICLE WEAR
TO 450°F (232°C)**

**Loctite® Nordbak® High
Temperature Pneu-Wear**

Item # 98372 25 lb. kit

**FINE PARTICLE WEAR
TO 550°F (288°C)**

**Loctite® Nordbak®
Ultra-High Temperature
Pneu-Wear**

Item # 96332 25 lb. kit

**FAST CURING, FINE PARTICLE
WEAR TO 225°F (107°C)**

**Loctite® Nordbak®
Fast Cure Pneu-Wear**

Item # 96363 6 lb. kit
1117828* 25 lb. kit

**NON-RUST PUTTY WITH FINE
PARTICLE WEAR RESISTANCE**

**Loctite® Fixmaster®
Wear-Resistant Putty**

Item # 98742 1 lb. kit
98743 3 lb. kit

* Made-to-order item.