

# CorePro MainsFit (UL Type-B) T8

15T8/COR/48-840/MF21/G/120-347V 25/1

The CorePro MainsFit (UL Type B) lamps are designed to be the perfect retrofit solution to move from traditional fluorescent lamps to energy saving LEDs. This ballast bypass lamp has everything needed built into the lamp with proven energy savings, long life (up to 50k hours), surge suppression and industry leading safety features. All lamps in the CorePro MainsFit family are double-ended to help simplify the installation. In addition, all lamps meet the Philips standards for light quality so that end users will be in a comfortable environment regardless of the CorePro MainsFit lamp type.

## Product data

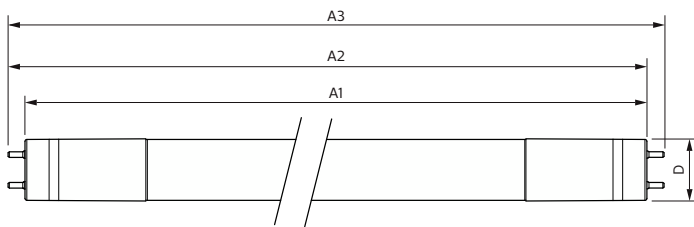
General Information		LLMF At End Of Nominal Lifetime (Nom) 70 %	
Cap-Base	G13 [Medium Bi-Pin Fluorescent]		
Nominal lifetime	50,000 hour(s)		
Switching Cycle	50,000		
Lighting Technology	LED		
EU RoHS compliant	Yes		
Light Technical		Operating and Electrical	
Color Code	840 [CCT of 4000K]	Line Frequency	50 to 60 Hz
Beam Angle (Nom)	240 degree(s)	Input Frequency	50 to 60 Hz
Luminous Flux	2,100 lm	Power Consumption	15 W
Color Designation	Cool White (CW)	Lamp Current (Max)	145 mA
Correlated Color Temperature (Nom)	4000 K	Lamp Current (Min)	50 mA
Luminous Efficacy (rated) (Nom)	140.00 lm/W	Starting Time (Nom)	0.5 s
Color Consistency	<6	Warm-up time to 60% light	0.5 s
Color rendering index (CRI)	80	Power Factor (Fraction)	0.9
		Voltage (Nom)	120-347 V
		UL Type	TLED_Type B; UL classified double end
		Temperature	
		Ambient temperature range	-20 °C to 45 °C

# CorePro MainsFit (UL Type-B) T8

T-Case Maximum (Nom)	70 °C
<b>Controls and Dimming</b>	
Dimmable	Limited
<b>Mechanical and Housing</b>	
Bulb Finish	Frosted
Bulb Material	Glass
Product Length	1,200 mm
Bulb Shape	T8
<b>Approval and Application</b>	
Energy Saving Product	Yes
Approval Marks	RoHS compliance UL certificate DLC compliance

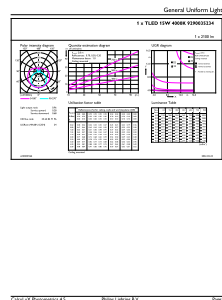
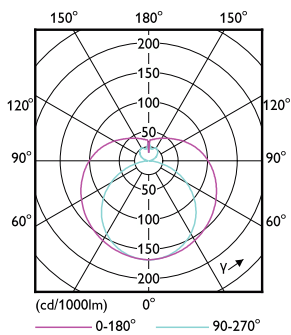
<b>Application Conditions</b>	
can it be used in closed luminaires	Yes
<b>Product Data</b>	
Order product name	15T8/COR/48-840/MF21/G/120-347V 25/1
Full product name	15T8/COR/48-840/MF21/G/120-347V 25/1
Order code	929003523404
Material Nr. (12NC)	929003523404
Numerator - Quantity Per Pack	1
EAN/UPC - Product/Case	046677579296
Numerator - Packs per outer box	25
EAN/UPC - Case	50046677579291

## Dimensional drawing



Product	D1	D2	A1	A2	A3
15T8/COR/48-840/MF21/G/120-347V 25/1	25.7 mm	29 mm	1,198.2 mm	1,205.3 mm	1,212.4 mm

## Photometric data

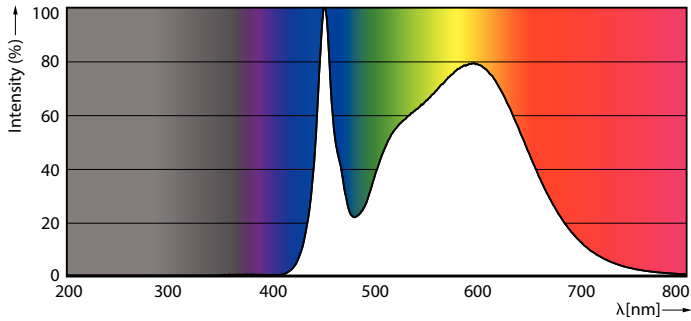


Light Distribution Diagram - 15T8/COR/48-840/MF21/G/120-347V 25/1

General uniform lighting - 15T8/COR/48-840/MF21/G/120-347V 25/1

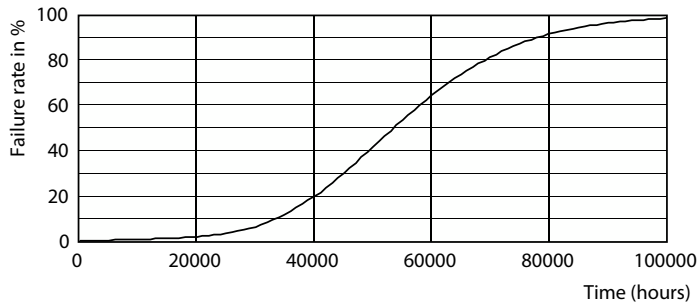
# CorePro MainsFit (UL Type-B) T8

## Photometric data

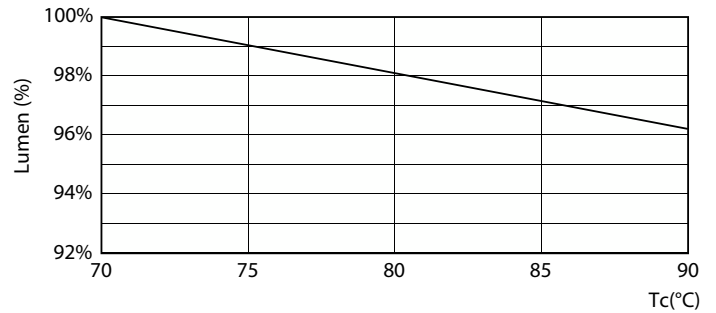


Spectral Power Distribution Colour - 15T8/COR/48-840/MF21/G/120-347V 25/1

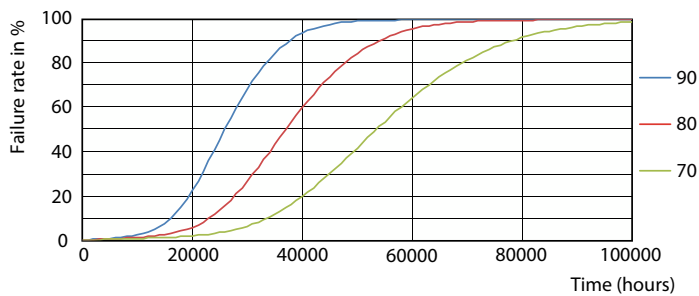
## Lifetime



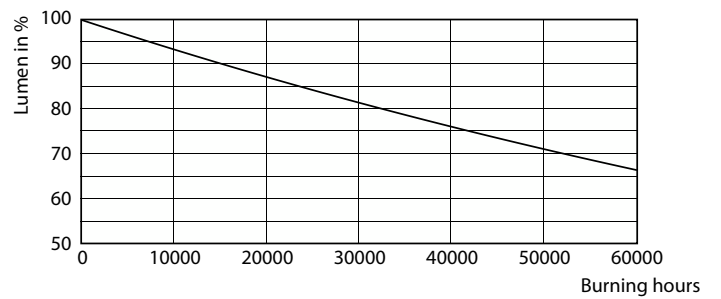
Life Expectancy Diagram - 15T8/COR/48-840/MF21/G/120-347V 25/1



Lumen Maintenance Diagram - 15T8/COR/48-840/MF21/G/120-347V 25/1



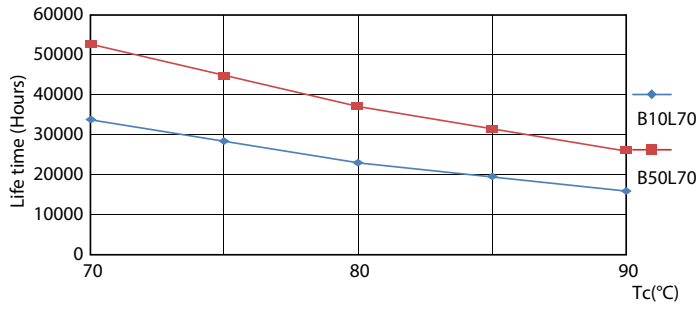
Life Expectancy Diagram - 15T8/COR/48-840/MF21/G/120-347V 25/1



Lumen Maintenance Diagram - 15T8/COR/48-840/MF21/G/120-347V 25/1

# CorePro MainsFit (UL Type-B) T8

## Lifetime



Life Expectancy Diagram - 15T8/COR/48-840/MF21/G/120-347V 25/1

