



T8

16.5T8/COR/48-840/MF21/G/347V 25/1

Our TLEDs are available in InstantFit (Type A / Type C) or MainsFit (Ballast bypass / Type B) versions. The InstantFit lamps work on a broad variety of ballasts and LED drivers. Only InstantFit has over 15,000 lamp & ballast combinations delivering even light output, energy savings and a long lifetime. Our MainsFit products feature a double-ended design, simplifying installation while a proprietary safety circuit minimizes a shock risk. Lamp sizes range from 2-foot to 8-foot and U-bend with a variety of lumen outputs.

Product data

General Information	
Cap-Base	G13 [Medium Bi-Pin Fluorescent]
Nominal lifetime	50,000 hour(s)
Switching Cycle	50,000
Lighting Technology	LED
EU RoHS compliant	Yes
Light Technical	
Color Code	840 [CCT of 4000K]
Beam Angle (Nom)	240 degree(s)
Luminous Flux	2,100 lm
Color Designation	Cool White (CW)
Correlated Color Temperature (Nom)	4000 K
Luminous Efficacy (rated) (Nom)	127.00 lm/W
Color Consistency	<6
Color rendering index (CRI)	80
LLMF At End Of Nominal Lifetime (Nom)	70 %
Operating and Electrical	
Line Frequency	50 to 60 Hz

Input Frequency	50 to 60 Hz
Power Consumption	16.5 W
Starting Time (Nom)	0.5 s
Warm-up time to 60% light	0.9 s
Power Factor (Fraction)	0.9
Voltage (Nom)	347 V
UL Type	Type B - bypass the ballast
Temperature	
Ambient temperature range	-20 °C to 45 °C
T-Case Maximum (Nom)	55 °C
Controls and Dimming	
Dimmable	No
Mechanical and Housing	
Bulb Material	Glass
Product Length	1,200 mm
Bulb Shape	T8

T8

Approval and Application

Energy Saving Product	Yes
Approval Marks	RoHS compliance UL certificate DLC compliance
Energy Consumption kWh/1000 h	- kWh

Product Data

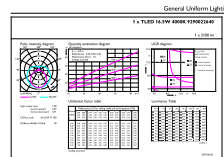
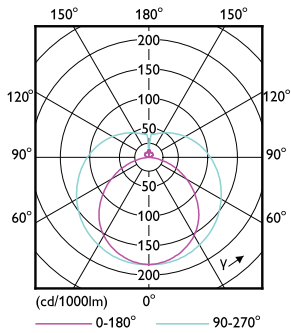
Order product name	16.5T8/COR/48-840/MF21/G/347V 25/1
Full product name	16.5T8/COR/48-840/MF21/G/347V 25/1

Order code	929002264004
Material Nr. (12NC)	929002264004
Numerator - Quantity Per Pack	1
EAN/UPC - Product/Case	046677554682
Numerator - Packs per outer box	25
EAN/UPC - Case	50046677554687

Dimensional drawing

Product	D	A1	A2	A3
16.5T8/COR/48-840/MF21/G/347V 25/1	26 mm	1,199.4 mm	1,206.5 mm	1,213.6 mm

Photometric data



OSRAM Photometric List - 16.5T8 LED 16.5W 4800K 2500lm - Page 11

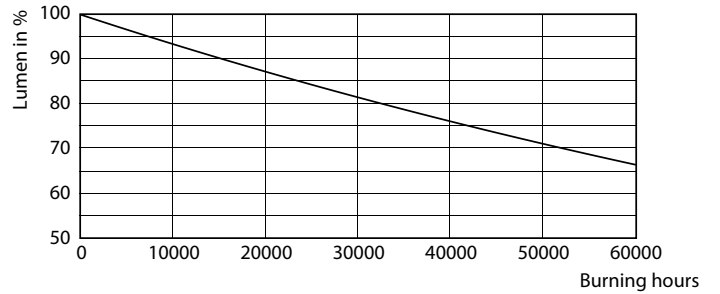
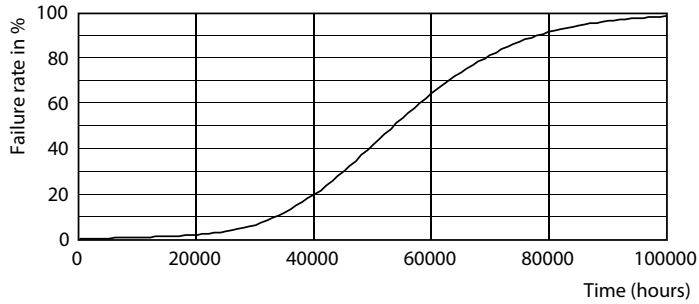
Light Distribution Diagram - 16.5T8/COR/48-840/MF21/G/347V 25/1

General uniform lighting - 16.5T8/COR/48-840/MF21/G/347V 25/1

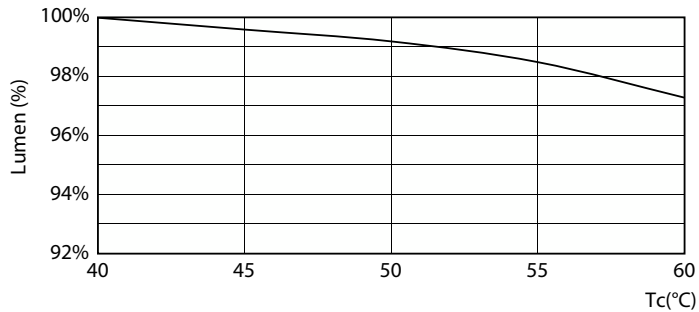
Photometric data

Spectral Power Distribution Colour - 16.5T8/COR/48-840/MF21/G/347V 25/1

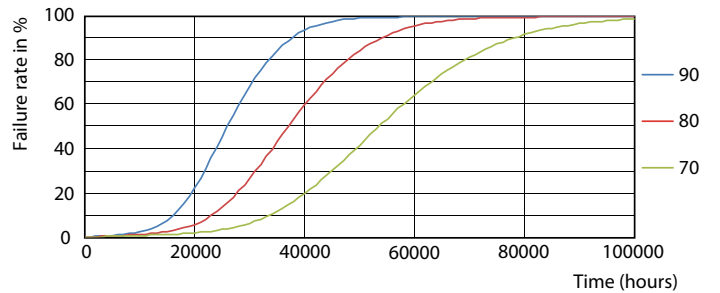
Lifetime



Life Expectancy Diagram - 16.5T8/COR/48-840/MF21/G/347V 25/1



Lumen Maintenance Diagram - 16.5T8/COR/48-840/MF21/G/347V 25/1

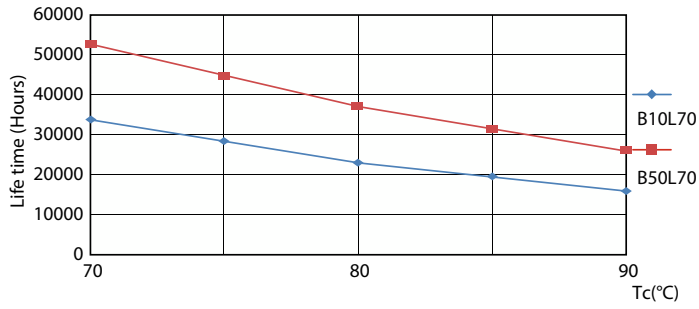


Lumen Maintenance Diagram - 16.5T8/COR/48-840/MF21/G/347V 25/1

Life Expectancy Diagram - 16.5T8/COR/48-840/MF21/G/347V 25/1

T8

Lifetime



Life Expectancy Diagram - 16.5T8/COR/48-840/MF21/G/347V 25/1

