



Corepro InstantFit (UL Type-A) T8

30T8/COR/96-850/IF42/G/FA8 10/1

The CorePro InstantFit LED lamps provide hassle-free installation with simple lamp-for-lamp replacements. They deliver what we promise, with at least 40% energy savings, flicker-free performance, and the life you would expect. Other lamps claim compatibility but only CorePro InstantFit (UL Type A) has been proven to work with over 200 ballasts and drivers, delivering even light output, with proven energy savings and a long average lifetime. End users will be delighted being under these comfortable and high quality CorePro InstantFit lamps with no visible flicker and optimized optics. Energy managers will enjoy these lamps too as they can count the savings delivered by our lamps. To enjoy more energy savings, the CorePro InstantFit lamps can be paired with the Advance TLED drivers to create a Type C system.

Product data

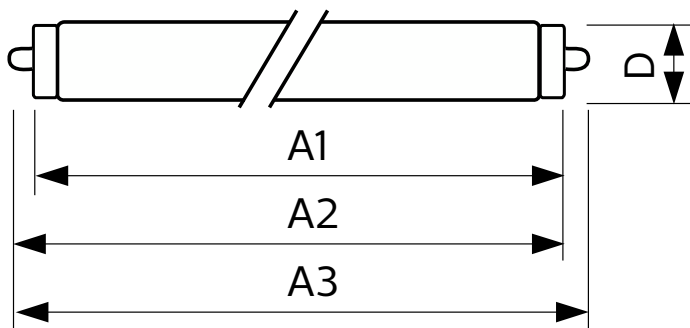
General Information		Color Consistency	
Cap-Base	FA8	Color Consistency	ANSI
Nominal lifetime	50,000 hour(s)	Color rendering index (CRI)	80
Switching Cycle	50,000	LLMF At End Of Nominal Lifetime (Nom)	70 %
Lighting Technology	LED	Operating and Electrical	
EU RoHS compliant	Yes	Line Frequency	35000-150000 Hz
Light Technical		Input Frequency	35000-150000 Hz
Color Code	850 [CCT of 5000K]	Power Consumption	30 W
Beam Angle (Nom)	240 degree(s)	Lamp Current (Max)	350 mA
Luminous Flux	4,200 lm	Lamp Current (Min)	100 mA
Color Designation	Daylight	Wattage Equivalent	60 W
Correlated Color Temperature (Nom)	5000 K	Starting Time (Nom)	0.5 s
Luminous Efficacy (rated) (Nom)	140.00 lm/W	Warm-up time to 60% light	0.5 s
		Power Factor (Fraction)	0.9

Corepro InstantFit (UL Type-A) T8

Voltage (Nom)	200-500 V
UL Type	UL Type A
Temperature	
Ambient temperature range	-20 °C to 45 °C
T-Case Maximum (Nom)	45 °C
Controls and Dimming	
Dimmable	No
Mechanical and Housing	
Bulb Finish	Frosted
Bulb Material	Glass
Product Length	2,400 mm
Bulb Shape	T8
Approval and Application	
Energy Saving Product	Yes

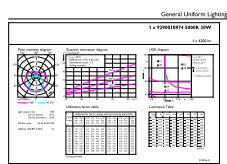
Approval Marks	UL certificate RoHS compliance
Energy Consumption kWh/1000 h	- kWh
Energy Certifications	DLC Standard
Application Conditions	
can it be used in closed luminaires	Yes
Product Data	
Order product name	30T8/COR/96-850/IF42/G/FA8 10/1
Full product name	30T8/COR/96-850/IF42/G/FA8 10/1
Order code	533034
Material Nr. (12NC)	929001897404
Numerator - Quantity Per Pack	1
EAN/UPC - Product/Case	046677533038
Numerator - Packs per outer box	10
EAN/UPC - Case	50046677533033

Dimensional drawing

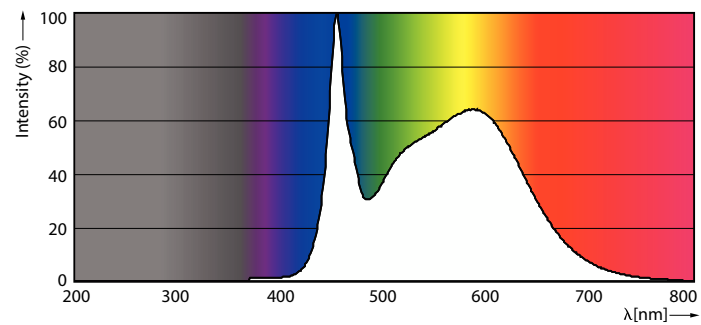


Product	D1	D2	A1	A2	A3
30T8/COR/96-850/ IF42/G/FA8 10/1	25.5 mm	28 mm	2,366.9 mm	2,375.8 mm	2,384.7 mm

Photometric data



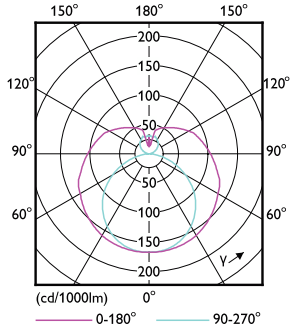
General uniform lighting - 30T8/COR/96-850/IF42/G/FA8 10/1



Spectral Power Distribution Colour - 30T8/COR/96-850/IF42/G/FA8 10/1

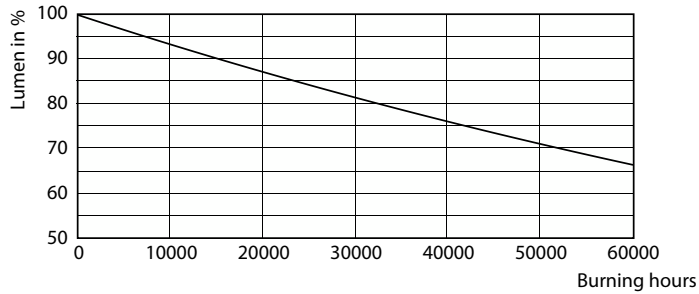
Corepro InstantFit (UL Type-A) T8

Photometric data

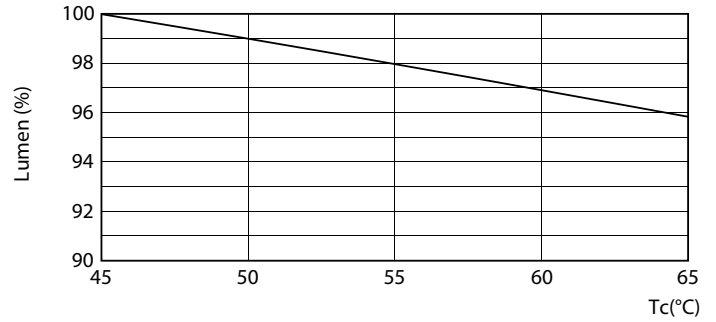


Light Distribution Diagram - 30T8/COR/96-850/IF42/G/FA8 10/1

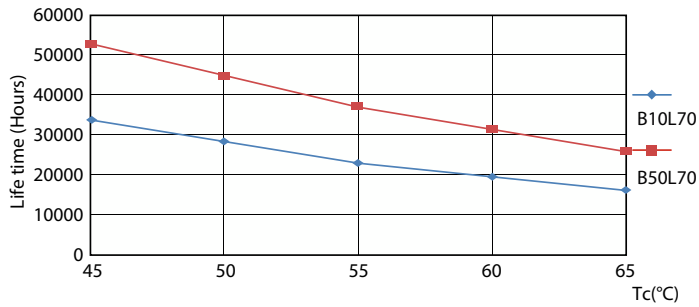
Lifetime



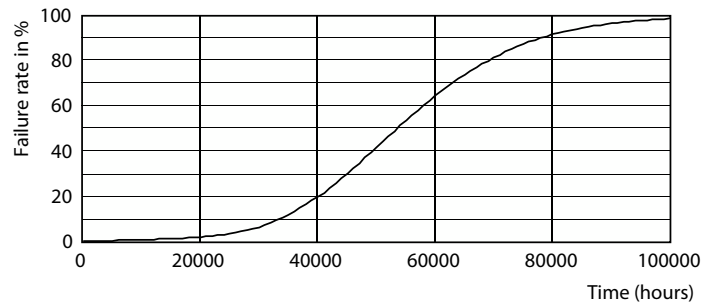
Lumen Maintenance Diagram - 30T8/COR/96-850/IF42/G/FA8 10/1



Lumen Maintenance Diagram - 30T8/COR/96-850/IF42/G/FA8 10/1



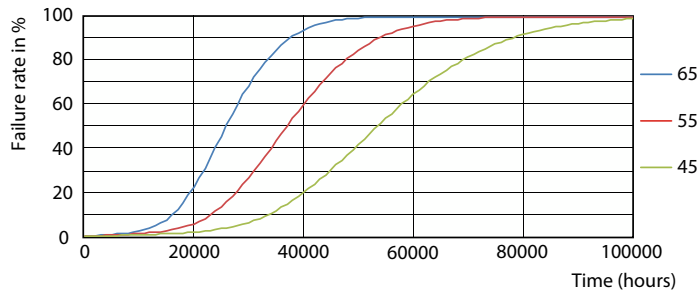
Life Expectancy Diagram - 30T8/COR/96-850/IF42/G/FA8 10/1



Life Expectancy Diagram - 30T8/COR/96-850/IF42/G/FA8 10/1

Corepro InstantFit (UL Type-A) T8

Lifetime



Life Expectancy Diagram - 30T8/COR/96-850/IF42/G/FA8 10/1

