

**OD-19040**



30 inch Under - Cabinet Kitchen Rangehood Fan



| Model        | OD-19040                                   |
|--------------|--|
| Wattage      | 90W  |
| Voltage      | 120V AC                                    |
| No. of Motor | Single                                     |
| Airflow      | 190 CFM (High Speed)   100 CFM (Low Speed) |
| No. of Motor | Single                                     |
| No. of Speed | 2 speed                                    |
| Control      | Built-in push button                       |

**DESCRIPTION:**

- For outdoor or indoor vented installations (Ducted or non-Ducted)
- Mounting height: 18 inch to 24 inch from cooktop to bottom of hood
- Aluminum grease filter
- *Black colour is only available upon request for bulk quantities*

**AVAILABLE FINISHES:**



**OD-RH600**



30 inch Under - Cabinet Kitchen Rangehood Fan



| Model            | OD-RH600  |
|------------------|---|
| Airflow          | 600 CFM (High Speed)                              |
| Voltage          | 120V AC   |
| Mounting Height  | 18 inch to 24 inch from cooktop to bottom of hood |
| Rectangular Vent | Vertical/Horizontal 3-1/4" x 10"                  |
| Round Vent       | Vertical 6"                                       |
| No. of Speed     | 3 speed   |
| Control          | Built-in touch control                            |

**DESCRIPTION:**

- 3 speed with stainless steel touch control
- Includes baffle filters
- Includes energy-efficient LED lighting

**AVAILABLE FINISHES:**



**OD-RH320**



30 inch Under - Cabinet Kitchen Rangehood Fan



| Model           | OD-RH320  |
|-----------------|---|
| Grease Filters  | Open Mesh (Qty. 2)  |
| Voltage         | 120V AC   |
| Mounting Height | 18 inch to 24 inch from cooktop to bottom of hood                   |
| Airflow         | 320 CFM (High Speed)   220 CFM (Medium Speed)   120 CFM (Low Speed) |
| Lighting        | 2x5W GU10   |
| No. of Speed    | 3 speed   |
| Control         | Built-in push button  |

**DESCRIPTION:**

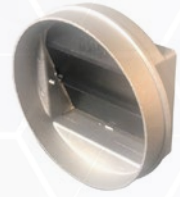
- For outdoor or indoor vented installations (Ducted or non-Ducted)
- Includes 2 dishwasher-safe aluminum filters and 1 charcoal filter
- Includes alluminum grease filter

**AVAILABLE FINISHES:**



**DUCTWORK**  
**6IN COLLAR**

6" polymeric collar for ventilation fans



**ADA 4 TO 6**

Universal Series adapter for 4"-6" duct that fits all around duct designs



**ADA 6 TO 4**

Universal Series adapter for 6"-4" duct that fits all around duct designs



**BDA**

Back draft damper for airflow control in ventilation systems



**DESCRIPTION:**

- For mounting between ducts
- Available in 4", 5", 6", 8", 10", 12" sizes
- Can function in both horizontal and vertical positions

**LINT TRAP-DS**

Dual size lint trap for catching lint



**DESCRIPTION:**

- Used when installing dryer booster fan less than 15ft distance from the back of the dryer

**PAV-B**

Polymeric air valve for air supply and exhaust in ventilation systems



**DESCRIPTION:**

- Available in 4", 5", 6", 8" sizes
- To be mounted into round duct by mounting frame
- Polypropylene body with adjustable core and thread

**SAV**

Steel supply air valve with adjustable core



**DESCRIPTION:**

- Available in 4", 5", 6", 8" sizes
- Pressed steel grill with adjustable core
- Supplied with galvanized steel mounting frame
- All steel construction material with RAL 9016 and RAL 9010 for its colour

**ODB-100**

Residential grade wall recessed white metal dryer box that fits 2x6 stud size



**DESCRIPTION:**

- Protects exhaust duct in the wall
- Allows the dryer to perform at its peak efficiency
- Saves space & energy; contributes to reducing fire hazard
- Places dryer flush to wall without crushing exhaust hose or restricting airflow

**ODB4-100**

Residential grade wall recessed white metal dryer box that fits 2x4 stud size



**DESCRIPTION:**

- Protects exhaust duct in the wall
- Allows the dryer to perform at its peak efficiency
- Saves space & energy; contributes to reducing fire hazard
- Places dryer flush to wall without crushing exhaust hose or restricting airflow

**VB-6-S**

Commercial grade vapour barrier for fans



**DESCRIPTION:**

- 50 per standard packing
- +90°C temperature rating
- Made of heavy duty polyethylene
- Applicable for most building codes