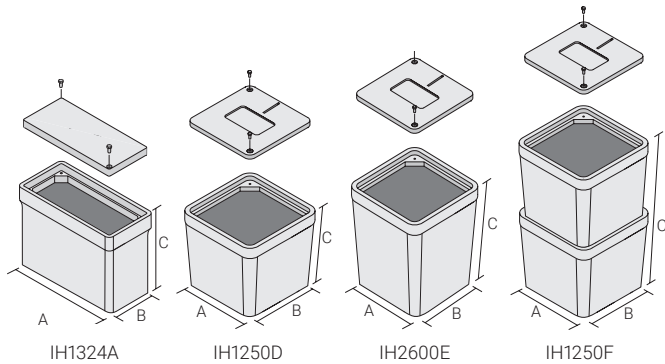


Grounding Accessories

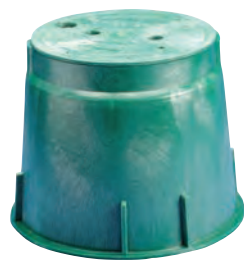
LIGHT WEIGHT POLYMER CONCRETE INSPECTION WELLS



Part Number	Height	Length	Width	Unit Weight
IH1250D	12"	12"	12"	12.3 lb
IH1250F	23"	12"	12"	38.1 lb
IH1324A	18"	24"	13"	25.9 lb
IH2600E	18"	12"	12"	16.9 lb

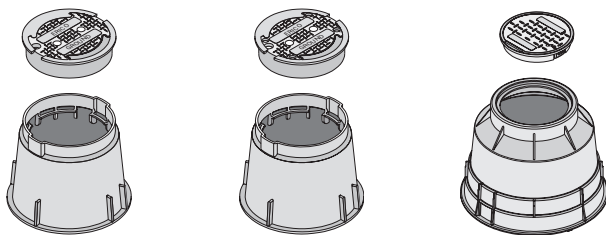


IH1250F



T416BH

HIGH DENSITY POLYETHYLENE INSPECTION WELLS (HDPE)



T416B

T416BH

T416C

Material: High Density Polyethylene (HDPE)
Color: Green, Load Rating: 300 psf

Part Number	Diameter, Grade Level	Outer Diameter	Height	Unit Weight
T416B	10 1/4"	13.1"	10"	4.5 lb
T416BH	10 1/4"	13.1"	10"	4.5 lb

Material: High Density Polyethylene (HDPE)
Color: Black, Load Rating: 300 psf

Part Number	Diameter, Grade Level	Outer Diameter	Height	Hole Size	Unit Weight
T416C	14 1/4"	24.38"	18 1/4"	2 3/4"	16.2 lb



INSPECTION HOUSING, LIGHTWEIGHT POLYMER CONCRETE



T422A

- Tier 22 Design Load of 22,500 lbs (10,206 kg) with a test load of 34,720 lbs (15,749 kg)
- Non-slip cover suitable for non-deliberate, incidental traffic
- Cuts with a standard hole saw, no concrete tools required
- Includes the words "GROUND" on the cover

Part Number	Height	Length	Width	Unit Weight
T422A	18"	25"	15 1/2"	118 lb