



J6SLC RGBW MW

READ AND FOLLOW ALL SAFETY INSTRUCTIONS!

SAVE THESE INSTRUCTIONS AND DELIVER TO OWNER AFTER INSTALLATION

Product Information: Juno Smart LED RGBW Speaker Downlight Retrofit may be used for incandescent housings already installed in application or with dedicated quick connect housings by Juno.

Product Contents: Each unit carton contains the following: 1ea LED speaker light module, 1ea E26 adapter. Check for all contents prior to installation.

Required Tools (not included): Safety glasses, ladder, and gloves.

Product Listings: ETL certified to US and Canadian safety standards; wet location listed; and WSEC ASTEM E283 for Air-Tight rated with IC housings. 6SL minimum lamp compartment 6 inches (152 mm) in diameter by 5.75 inches (146 mm) tall or minimum lamp compartment 163 in³ (2649 cm³). Use only in open luminaires. Suitable for Type IC or Type Non-IC luminaires. The retrofit kit is accepted as a component of a luminaires where the suitability of the combination shall be determined by ETL or authorities having jurisdiction.

The retrofit kit is accepted as a component of a luminaire where the suitability of the combination shall be determined by authorities having jurisdiction. Product must be installed by a qualified electrician in accordance with the applicable and appropriate electrical codes. The installation guide does not supersede local or national regulations for electrical installation.

Do not make or alter any open holes in an enclosure of wiring or electrical components during kit installation. This device is not intended for use with **emergency exits** or **emergency lighting**.

Failure to follow any of these instructions could void product warranties. Changes or modifications to this unit not expressly approved by the party responsible for compliance could void the user's authority to operate the equipment. For a complete listing of product Terms and Conditions, please visit www.acuitybrands.com. Acuity Brands Lighting, Inc. assumes no responsibility for claims arising out of improper or careless installation or handling of its products.



INSTALLATION INSTRUCTIONS

Juno Smart LED RGBW Speaker LED Trim Kit

LED IMPORTANT SAFETY INSTRUCTIONS

- To reduce the risk of death, personal injury, or property damage from fire, electric shock, falling parts, cuts/abrasions, and other hazards please read all warnings and instructions included with and on the fixture box and all fixture labels.
- Before installing, servicing, or performing routine maintenance upon this equipment, follow these general precautions.
- Installation and service of luminaires should be performed by a **qualified licensed electrician**.
- Maintenance of the luminaires should be performed by person(s) familiar with the luminaires' construction and operation and any hazards involved. Regular fixture maintenance programs are recommended.
- It will occasionally be necessary to clean the outside of the refractor/lens/trim. Frequency of cleaning will depend on ambient dirt level and minimum light output which is acceptable to user. Refractor/lens/trim should be washed in a solution of warm water and any mild, non-abrasive household detergent, rinsed with clean water and wiped dry. Should optical assembly become dirty on the inside, wipe refractor/lens and clean in above manner, replacing damaged gaskets as necessary.
- **DO NOT INSTALL DAMAGED PRODUCT!** This luminaire has been properly packed so that no parts should have been damaged during transit. Inspect to confirm. Any part damaged or broken during or after assembly should be replaced.
- Recycle: For information on how to recycle LED electronic products, please visit www.epa.gov.
- These instructions do not purport to cover all details or variations in equipment nor to provide every possible contingency to meet in connection with installation, operation, or maintenance. Should further information be desired, or should particular problems arise which are not covered sufficiently for the purchaser's or owner's purposes, this matter should be referred to Acuity Brands Lighting, Inc.

• **WARNING RISK OF ELECTRIC SHOCK**

- Disconnect or turn off power before installation or servicing.
- Verify that supply voltage is correct by comparing it with the luminaire label information.
- Make all electrical and grounded connections in accordance with the National Electrical Code (NEC) and any applicable local code requirements.
- All wiring connections should be capped with UL approved recognized wire connectors.

• **CAUTION RISK OF INJURY**

- Wear gloves and safety glasses at all times when removing luminaire from carton, installing, servicing or performing maintenance.
- Avoid direct eye exposure to the light source while it is on.

• **WARNING RISK OF BURN**

- Allow lamp/fixture to cool before handling. Do not touch enclosure or light source.
- Do not exceed maximum wattage marked on luminaire label.
- Follow all manufacturer's warnings, recommendations, and restrictions for: driver type, burning position, mounting locations/methods, replacement and recycling.

• **CAUTION RISK OF FIRE**

- Keep combustible and other materials that can burn, away from lamp/lens.
- Do not operate in close proximity to persons, combustible materials or substances affected by heat or drying.

• **CAUTION RISK OF PRODUCT DAMAGE**

- Never connect components under load.
- Do not mount or support these fixtures in a manner that can cut the outer jacket or damage wire insulation.
- Never connect an LED product to an unapproved dimmer pack. Contact ABL directly for any dimmers not specifically recommended for the product.
- Unless individual product specifications deem otherwise: Allow for some volume of airspace around fixture. Avoid covering LED fixtures with insulation, foam, or other material that will prevent convection or conduction cooling.



INSTALLATION INSTRUCTIONS

Juno Smart LED RGBW Speaker LED Trim Kit

- Unless individual product specifications deem otherwise: Maximum ambient temperature is 90°C. Do not operate fixture at temperatures higher than this.
- Unless individual product specifications deem otherwise: Never mount in places where fixture will be exposed to rain, high humidity, extreme temperature changes or restricted ventilation.
- LED products are Polarity Sensitive. Ensure proper Polarity before installation.
- Electrostatic Discharge (ESD): ESD can damage LED fixtures. Personal grounding equipment must be worn during all installation or servicing of the unit.
- Do not touch individual electrical components as this can cause ESD, shorten lamp life, or alter performance.
- There are no user serviceable parts inside the unit. Do not rewire, reconfigure, or modify the unit or attempt any repairs yourself. Additionally, field replacement of the LED assembly or lamps is not allowed by UL standards at this time. In the unlikely event your unit may require service, stop using the unit immediately and contact an ABL representative.
- Always read the fixtures complete installation instructions prior to installation for any additional fixture specific warnings.
- Verify that power distribution system has proper grounding. Lack of proper earth ground can lead to fixture failure and may void warranty.

- **CAUTION RISK OF WIRING PRODUCT DAMAGE**

- To prevent wiring damage or abrasion, do not expose wiring to edges of sheet metal or other sharp objects.

This equipment has been tested and found to comply with the limits for a Class B digital device, pursuant to part 15 of the FCC Rules. These limits are designed to provide reasonable protection against harmful interference in a residential installation. This equipment generates, uses, and can radiate radio frequency energy and, if not installed and used in accordance with the instructions, may cause harmful interference to radio communications. However, there is no guarantee that interference will not occur in a particular installation.

If this equipment does cause harmful interference to radio or television reception, which can be determined by turning the equipment off and on, the user is encouraged to try to correct the interference by one or more of the following measures:

- Reorient or relocate the receiving antenna.
- Increase the separation between the equipment and receiver.
- Connect the equipment into an outlet on a circuit different from that to which the receiver is connected.
- Consult the dealer or an experienced radio/TV technician for help.

All luminaires that contain electronic devices that generate frequencies above 9kHz from any component within the luminaire comply with one of the following Part 15 of the FCC Rules. Operation is subject to the following two conditions:

- (1) This device may not cause harmful interference
- (2) This device must accept any interference received, including interference that may cause undesired operation.

This equipment complies with FCC's and IC's RF radiation exposure limits set forth for an uncontrolled environment. The antenna(s) used for this transmitter must be installed and operated to provide a separation distance of at least 20 cm from all persons and must not be collocated or operating in conjunction with any other antenna or transmitter. Installers must ensure that 20cm separation distance will be maintained between the device (excluding its handset) and users.

Cet appareil est conforme aux limites d'exposition au rayonnement RF stipulées par la FCC et l'IC pour une utilisation dans un environnement non contrôlé. Les antennes utilisées pour cet émetteur doivent être installées et doivent fonctionner à au moins 20 cm de distance des utilisateurs et ne doivent pas être placées près d'autres antennes ou émetteurs ou fonctionner avec ceux-ci. Les installateurs doivent s'assurer qu'une distance de 20 cm sépare l'appareil (à l'exception du combiné) des utilisateurs.

This device contains license-exempt transmitter(s)/receiver(s) that comply with Innovation, Science and Economic Development Canada's license-exempt RSS(s). Operation is subject to the following two conditions:

- (1) This device may not cause interference.
- (2) This device must accept any interference, including interference that may cause undesired operation of the device.

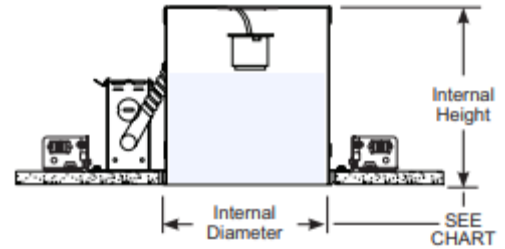
L'émetteur/récepteur exempt de licence contenu dans le présent appareil est conforme aux CNR d'Innovation, Sciences et Développement économique Canada applicables aux appareils radio exempts de licence. L'exploitation est autorisée aux deux conditions suivantes :

- 1) L'appareil ne doit pas produire de brouillage;

2) L'appareil doit accepter tout brouillage radioélectrique subi, même si le brouillage est susceptible d'en compromettre le fonctionnement.

Juno Retrofit LED Trim Compatibility in Recessed Cans

Juno Retrofit LED trims are designed to work with most standard UL listed recessed incandescent housings. When used with standard medium base incandescent housings, the medium base socket adaptor must be used. Housing compatibility can be determined by measuring the recessed housing diameter and height as shown in the diagram. Refer to the chart for compatible size ranges. Housing construction features vary. The height and diameter chart should be used as a guideline. Actual installation is the best method of determining compatibility.



	J6SLC 5/6"
Internal Diameter	6" min
Internal Height	5.75" min
Trim Flange Diameter	7.67"

INSTALLATION STEPS:

Step 1: PREPARE FOR FIXTURE INSTALLATION

- 1.1 Ensure input power is 120V, 60Hz, supply wires are rated for at least 90°C (194°F), and power is disconnected by turning OFF the circuit breaker or by removing the appropriate fuse at the fuse box.
- 1.2 If necessary, remove old ballast.
- 1.3 Read the entirety of the installation instructions manual prior to installation.

Step 2: DETERMINE WIRING METHOD (SELECT ONE WIRING METHOD)

- A. E26 Socket Adapter:
 1. Screw adapter into the base socket inside housing. (Figure 1)
 2. Plug orange connector of adapter into the fixture's mating orange connector.



Figure 1

B. LED Connector:

1. Plug orange connector from the fixture into the mating LED connector inside housing. (Figure 2)



Figure 2

Step 3: INSTALL UNIT(S) INTO RECESSED HOUSING(S)

- 3.1 Squeeze legs of each torsion spring together and seat them inside the torsion brackets of the Housing. Release springs, and gently push module into housing until flush with ceiling. (Figure 3)

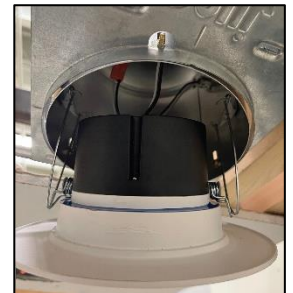


Figure 3

- 3.2 Repeat this step for each additional unit.

Note: When creating speaker groups, ensure "SATELLITE" units are located within 30 ft. of the "MASTER" unit.

Note: Wall dimmer switches are not compatible with the speaker light. Do not use a wall dimmer switch to control the power cycling of the fixture. Dimming is controlled through the smart app.

Step 4: SET UP EACH INSTALLED FIXTURE FOR SMART LIGHTING CONNECTIVITY

For this section, either watch the videos by scanning the QR Code below or read the step-by-step instructions in this guide.



<https://arco.de/bdzmFL>

Steps 4.1-4.6



<https://arco.de/bdzmHw>

Step 4.7

4.1 Ensure each unit installed is connected properly. Then, connect power back to fixtures by returning the circuit breaker to ON or by setting the appropriate fuse at the fuse box.

4.2 When power is first returned to the fixture, the light output will be set to max brightness at 3000K. (Figure 4)



Figure 4

4.3 Download the SmartThings app (made by Samsung Electronics Co., Ltd.) on your smart device. Make sure your smart device has the most recent version of the app downloaded.

Note: A Samsung SmartThings account must be created within the app to continue with the smart fixture set-up process.

4.4 For each fixture installed, connect the fixture to the SmartThings app by selecting the “+” sign on the top right corner of the interface and select “add device”. Use one of the methods below to connect the fixture. (Figure 6)

A. Scan a QR code

i. Use your smart device’s camera to scan SmartThings QR code on side of device (Figure 5)

Note: Be sure to not scan the Installation Instructions QR code also present on device’s trim.

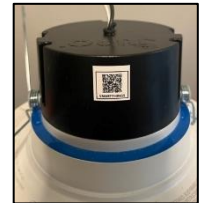


Figure 5

B. Scan for nearby devices

i. Select the “Juno Connect” device.

Note: Only one fixture can be set up at a time. If multiple fixtures need to be set up, the setup process will need to be repeated

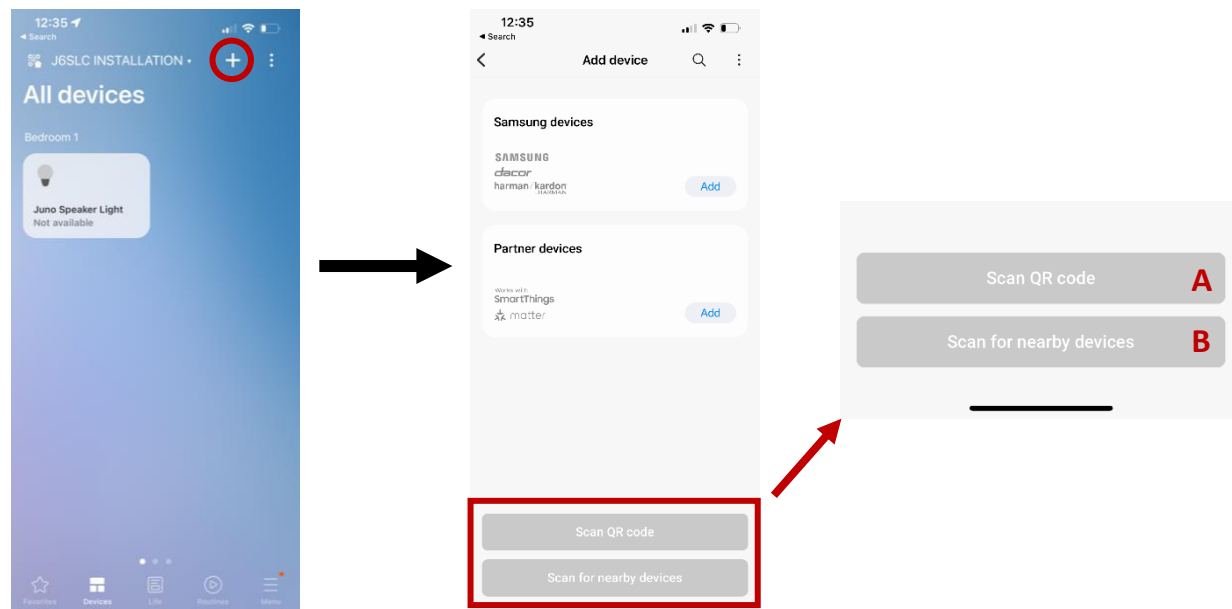


Figure 6

4.5 Proceed with steps prompted by SmartThings app to complete device set-up.

4.6 Repeat steps 4.1-4.5 for each device installed.

Note: Steps 4.1-4.6 is required if the user wants to create a speaker group or alter light output of the fixture. If the user prefers to keep the fixture at 3000K at max brightness and only utilize speaker control for the singular fixture, Steps 4 and 5 may be skipped. For full functionality of the fixture, continue with the installation process.

Note: The SmartThings app is only one of the multiple ways for the fixture to be controlled using Smart features. This device can also be operated through Amazon Alexa, Google Home, and SmartThings hubs. However, the device must be set up first using steps 4.1-4.6 to update firmware to the latest version, prior to setting up the device with other smart hubs. Please reference the quick start guide found at https://postsales.acuitybrands.com/qr/?sn=*279GR0 for information setting up the smart fixture to Amazon Alexa (echo 4th Gen, echo plus, echo show, echo show 10 required), Google home, or SmartThings with a hub. If the device is first connected to SmartThings D2D app for the firmware update, the device must then be factory reset BEFORE attempting to connect to Amazon Alexa or Google Home if the user wants to move the device to a different hub other than SmartThings. To factory reset, turn the light off and on at the LIGHT SWITCH five times slowly (five seconds between each on/off). The light will then blink three times and return to 3000K light output to show factory reset complete. Then, the user can connect to Amazon Alexa or Google Home hub (the hub must be Zigbee compatible).

Note: The device will not be able to connect to SmartThings if the Smart Fixture has been "ON" for more than 5 minutes. The user must turn the light OFF at the wall switch, wait 10 seconds, and then turn the light ON, again, if the Smart Fixtures are no longer connecting to SmartThings. This process is often required to set up multiple units (4 or more) at one time.

4.7 Ensure units installed are updated with the latest software by following the instructions below for each fixture uploaded to SmartThings.

1. Select the unit on the SmartThings app. (Figure 7)

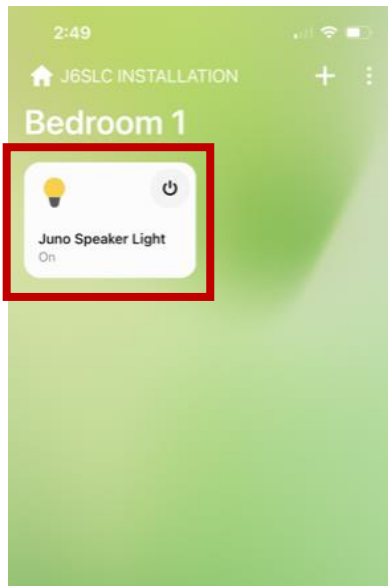


Figure 7

2. Select the product tile icon in the upper right-hand corner of the device settings. (Figure 8)

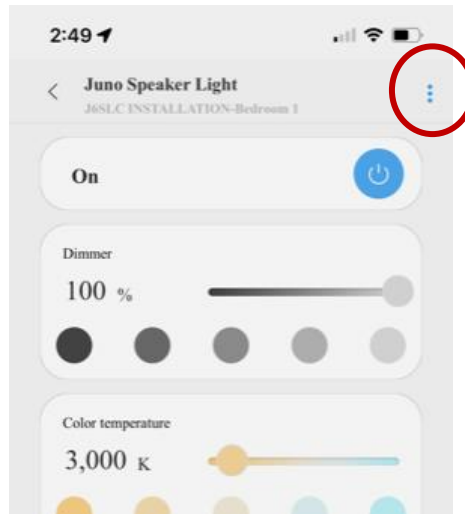


Figure 8

3. Select "Software Update" in the drop-down menu. (Figure 9)

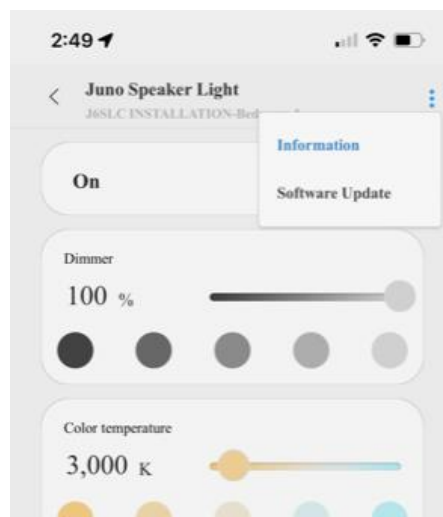


Figure 9

Note: If the fixture's software is already up to date, the "Software Update" button will be grayed out and selecting it will not prompt an update.

Step 5: SET UP SPEAKER GROUPING

For this section, either watch the videos by scanning the QR Code below or read the step-by-step instructions in this guide.



<https://arco.de/bdzmlV>

Steps 5.1-5.6

Note: Every fixture installed can be set as a “MASTER” unit or “SATELLITE” unit. For each speaker group, only one fixture can be the “MASTER” unit, and the rest will be “SATELLITE” units.

Note: Step 5 is only required if multiple units will be paired together for audio control. If the user would like to play audio from a singular fixture, this section can be skipped.

Note: Step 5 can be completed using the SmartThings smartphone app or any hub such as Amazon Alexa, Samsung SmartThings Hub, or Google Home. However, Step 4 must be completed in the SmartThings smartphone app to ensure that each fixture’s software is up to date before continuing to the Speaker Grouping process.

Note: Ensure that all of the devices are connected to your smart device or hub of choice BEFORE speaker grouping. The only way to move a speaker group to another Smart Platform is through a factory reset and setting up all of the speaker lights for grouping, again. Please follow the notes in Step 4.6 if the speaker lights for the group have already been connected to SmartThings. If a device is first connected in SmartThings, then it must be factory reset before being able to connect to Amazon Alexa or Google Home.

5.1 Determine which fixture in the speaker group is optimal to be selected as the “MASTER” unit. The remaining units in the speaker group will be “SATELLITE” units.

Note: The fixture selected to be the “MASTER” should be the unit most centrally located in perspective to all other fixtures in the desired speaker group. The “MASTER” unit is the fixture that connects to the smart device for casting audio and controls the rest of the speaker group.

Note: If a “SATELLITE” unit is over 30 ft away from the “MASTER” unit, audio may sound distorted.

Note: If the smart device for audio control is over 30 ft from the “MASTER” unit, the entire speaker group’s audio may sound distorted.

5.2 To initiate speaker grouping mode, turn the light “On” and “Off” five times in your smart product app (Amazon Alexa, Google Home, Smart Things). This **CANNOT** be done at the light switch. The device will factory reset if power cycled at the light switch and each device will need to be reconnected to Amazon Alexa/Google Home/SmartThings.

Note: The unit MUST be set to a white color (no RGB colors) to enter the speaker grouping mode.

Note: Each “On” – “Off” cycle must be completed within 5 seconds of each other.

5.3 After five “On” – “Off” cycles, the light will begin to cycle between *BLUE* and *GREEN*. The desired “MASTER” unit should be set to *BLUE* and the remaining satellite units should be set to *GREEN*. Steps 5.2 and 5.3 must be repeated for each device in the desired speaker group. Only one device can be configured at a time. The speaker group should look like the units in *Figure 10* once configured correctly.

Note: Only one unit can be set as a “MASTER” per speaker group. Only one device should be set to BLUE and the rest GREEN before proceeding.

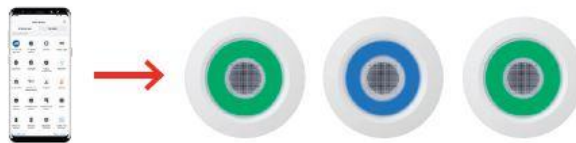


Figure 10

5.4 Once each device is defined as a “MASTER” or “SATELLITE”, turn the units “Off” then “On” at the **LIGHT SWITCH** to complete the speaker grouping set up. Wait five seconds between cycling “Off” and “On” at the switch. If done correctly, each unit will begin pulsing and then flash a *WHITE* light to signify that it was added to a group. If any units fail to connect or show a *RED* light, the speaker grouping was not successful, and the user must restart this process from Step 5.1.

Note: The speaker grouping process may take up to 1 minute to complete grouping. Please wait until then to test the speaker group. Do not perform another power cycle or change the light output settings in the smart app until after the pairing process is complete.

Note: Please reference the videos in the “Best Practices” guide at the end of this document to see this pairing process completed in real time.



INSTALLATION INSTRUCTIONS

Juno Smart LED RGBW Speaker LED Trim Kit

Step 6: SET UP BLUETOOTH AUDIO TO SPEAKER LIGHT

6.1 To connect a device to the speaker for Bluetooth audio casting, turn the Speaker Light “Off” then “On” at the **LIGHT SWITCH**. Open your device’s Bluetooth settings and scan for available devices. Allow for at least one minute for the Speaker Light to show as an available device. The Speaker Light will be named *Juno Speaker (XXXX)*

Note: This step must be completed if the Speaker Light is set up as a single device or as a Speaker Group.

6.2 Once connected to *Juno Speaker (XXXX)*, audio will now cast from your device of choice to the Speaker Light(s).

Note: Only the smart device (Smart Phone, Tablet, etc.) is required for volume and audio control of the speaker. Use your smart device to control audio. SmartThings hub, Amazon Alexa, and Google Home can only control the lighting.



INSTALLATION INSTRUCTIONS

Juno Smart LED RGBW Speaker LED Trim Kit

TROUBLESHOOTING GUIDE:

Problem:	Corrective Action:
Fixture will not illuminate	1. Verify line voltage is correct.
	2. Check wiring and connections
	3. Verify power supply is on at breaker
Circuit breaker trips when fixture is illuminated	Check wire connections. Ensure wires are not crossed and power wire is not grounding out. Consult electrician.
Light flickering	1. Verify line voltage is correct
	2. Check wiring and connections
	3. Consult electrician
	4. Install a light switch on the wall. Dimmers are not allowed
Speaker sound cuts in and out	1. Confirm your device is within 30 ft of the "MASTER" unit and any paired "SATELLITE" units are within 30 ft of the "MASTER" unit. Obstructions between the speaker and the Bluetooth® enabled device may cause signal interference
	2. To prevent signal interference, do not place the speaker downlights close to heavy electromagnetic emission devices or equipment such as household appliances or ceiling fans
Any fixtures show "red" light after group creation	Repeat the speaker grouping process. Return to Step 5.1 and create the Speaker Group, again.
Add additional speakers to already existing speaker group	Repeat the speaker grouping process. Return to Step 5.1 and create the Speaker Group, again.
Factory Reset Fixture	To factory reset the fixture, use the wall switch to cycle power "on" and "off" five times. Then, repeat the installation process from the beginning. <i>Note: Wait five seconds between turning the fixture "on" and "off". Complete all power cycles within one minute.</i>

If further assistance is required, contact **Technical Support at: (800) 705-7378**

Best Practices:

Video #1. Add the Juno Speaker Light to SmartThings.



<https://qrco.de/bdzmFL>

Video # 2. Update the firmware on the Juno Speaker Light.



<https://qrco.de/bdzmHw>

Video # 3 Create a Speaker Group.



<https://qrco.de/bdzmIV>