



AFU SAFETY SWITCH

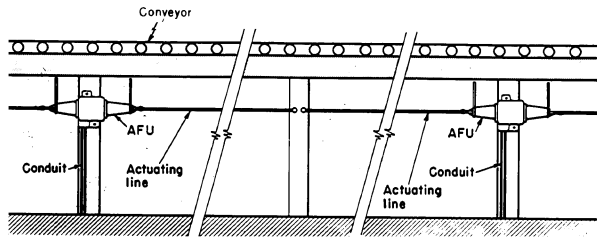


Figure 1

WARNING

Make certain power is OFF before starting installation.

MOUNTING BODY

1. Fasten AFU body to mounting surface using screws or bolts through mounting holes provided. Each body has three 1" conduit hubs — two for horizontal through-feed and one at bottom. Cast mounting lugs permit attachment to web of standard 3" angle iron.
2. Remove access cover and gasket.
3. Thread conduit into body and pull wires.

BODY AND SWITCH ASSEMBLY

1. Strip insulation from ends of individual conductors (3/4" recommended).

2. Slip gasket(s) over snap switch(es).
3. Using wire nuts connect leads from snap switch(es) to line leads.

AFU switch assemblies are furnished with one or two end units, each unit containing one or two normally closed (N.C.) snap switches having single circuit contacts. Second switch provides auxiliary circuit for audible or visual alarm signal.

Contacts are momentary motor control push buttons, with contact maintained by spring loaded shaft rotation.

4. Switches are to be positioned as indicated on drawing. Right switch assembly is marked R1 on indicating arm; left switch assembly is marked L1.
5. Replace access cover and gasket, making sure gasket is properly seated.
6. Connect pull rope or cable to ring on switch assembly housing.

Depending on size and length of line, supports at properly spaced intervals may be necessary to insure that line or cable weight will not actuate switch. See Table I for pull requirements.

OPERATION

In installation, actuating line or cable is connected from a fixed point to loop on the switch unit. Pulling line moves shaft 1/4" which opens switch and trips red indicating arm, locking shaft into switch open position. Mechanism is reset by returning indicating arm to its normal position.

Table I

Description	Max. Lbs. Wgt. for Line or Cable so Switch is not Actuated	Operating Lbs. Force Required	Snap Switch Heavy Duty 600 Volts A.C. Maximum	
			Catalog #	Catalog #
Single End Left	15	25	AFU0333-10	AFU0333-50
	25	50	AFU0333-20	AFU0333-60
Single End Right	15	25	AFU0333-01	AFU0333-05
	25	50	AFU0333-02	AFU0333-06
Double End	15	25	AFU0333-11	AFU0333-55
	25	50	AFU0333-22	AFU0333-66