

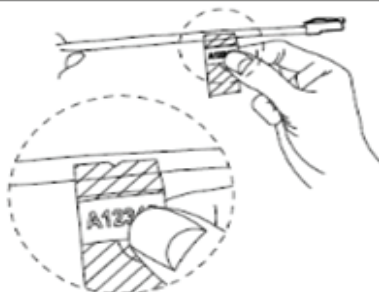
Turn Tell Installation Instructions

1



Remove the Turn-Tell label from the liner by lifting it at the non-adhesive middle section.

2



Apply the top adhesive backed anchor section (notched end) to the cable. For proper operation, the label should be applied squarely to the cable to avoid an uneven wrap.

3



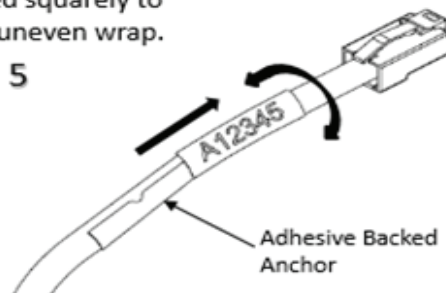
Wrap the label around the cable and over upon itself until completely wrapped.

4



Once the label is completely applied to the cable, pinch lightly and rotate it in the same direction as you wrapped it. This will break the label perforation and separate the label from the anchor.

5



After the label is installed and detached from the anchor, it is free to rotate and slide on the cable. The anchor can be used as a stop to prevent unintended label movement in vertical or high vibration applications (note: this is not recommended for laser/inkjet Turn-Tell labels in applications over 50° C).

B20392, REV. 3

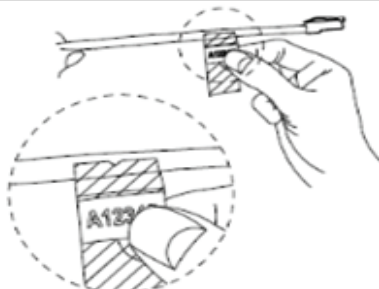
Turn Tell Installation Instructions

1



Remove the Turn-Tell label from the liner by lifting it at the non-adhesive middle section.

2



Apply the top adhesive backed anchor section (notched end) to the cable. For proper operation, the label should be applied squarely to the cable to avoid an uneven wrap.

3



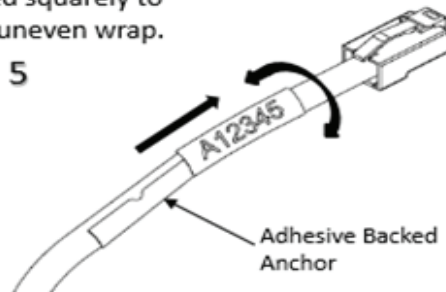
Wrap the label around the cable and over upon itself until completely wrapped.

4



Once the label is completely applied to the cable, pinch lightly and rotate it in the same direction as you wrapped it. This will break the label perforation and separate the label from the anchor.

5



After the label is installed and detached from the anchor, it is free to rotate and slide on the cable. The anchor can be used as a stop to prevent unintended label movement in vertical or high vibration applications (note: this is not recommended for laser/inkjet Turn-Tell labels in applications over 50° C).

B20392, REV. 3