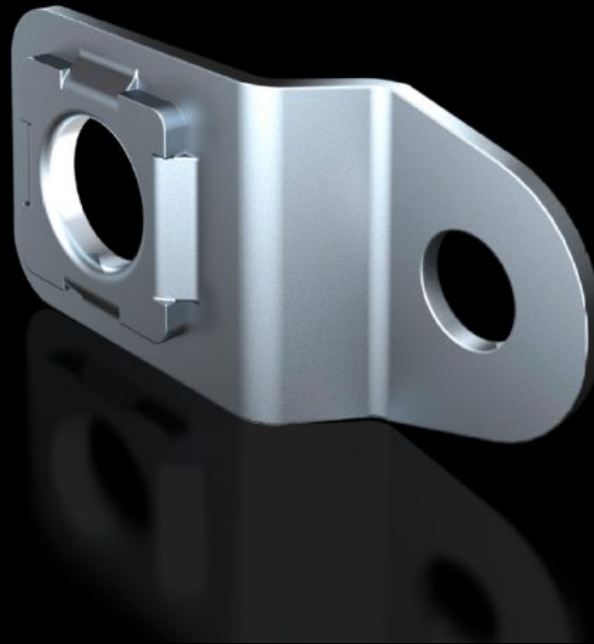


Rittal – The System.

Faster – better – everywhere.



KX 1590.010

Wall mounting bracket

State: 23/12/2023 (Source: rittal.com/com-en)

ENCLOSURES

POWER DISTRIBUTION

CLIMATE CONTROL

IT INFRASTRUCTURE

SOFTWARE & SERVICES

FRIEDHELM LOH GROUP



KX 1590.010 - Wall mounting bracket for AX sheet steel, KX sheet steel, AX IT, EL

For the attachment of AX and KX sheet steel enclosures.

Features

Model No.	KX 1590.010
Product description	For the attachment of AX and KX sheet steel enclosures.
Benefits	Screw-fastened directly from the rear with a self-tapping screw into the enclosure eyelet
Material	Sheet steel, zinc-plated
Supply includes	Assembly parts
Wall distance	10 mm
Type rating to UL 50E	Type 1, 3R, 4, 12
Packs of	4 pc(s).
Weight/pack	0.14 kg
Customs tariff number	73182900
EAN	4028177938045
ETIM 7.0	EC002625
ECLASS 8.0	27189234

Approvals

Approvals	DNV-GL UL + C-UL - FTTA
-----------	----------------------------