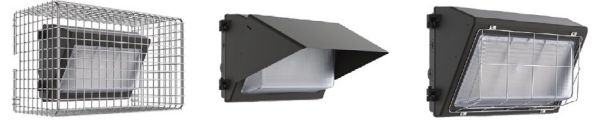




WP-LED Series

LED Wall Pack



IDEAL APPLICATIONS

- ✓ Entrances
- ✓ Schools
- ✓ Perimeter Areas
- ✓ Loading Docks

DESCRIPTION:

A Traditional Wall Pack with the newest lighting technology. Die cast aluminum housing with side hinge and borosilicate glass.

FEATURES:

- LED Wallpack that serves as an ideal replacement for HID wallpacks from 150W - 400W.
- Colour selectable switch inside fixture allows installer to choose between 3000K/4000K/5000K CCT on the field.
- Die cast aluminum housing with borosilicate glass lens.
- Side hinged design allows Installer to use two hands for wiring.
- Photocell, motion sensor, and 10Kv surge protector options available.

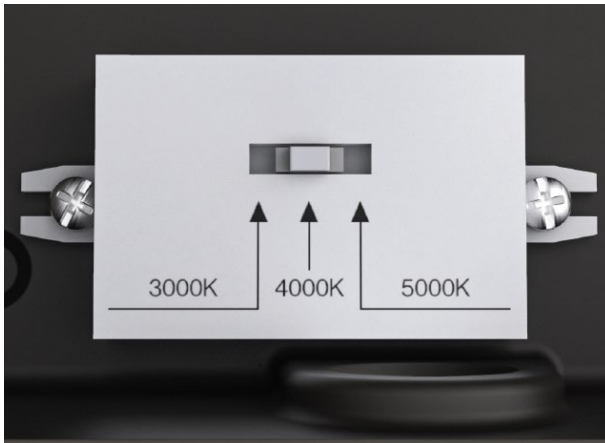
SPECIFICATIONS:	WP-LED40	WP-LED80	WP-LED80A40 ¹	WP-LED120
Watts	41W	78W	Max 80W Min 40W	124W
Voltage	120-277V	120-277V	120-347V	120-347V
Lumens	5,712	10,827	11,072 (at 80W setting)	16,493
Efficacy	140.9	139.7	137.5 (at 80W setting)	136.7
Replaces Up To	175W MH	250W MH	175W MH and 250W MH	400W MH
B-U-G	1-3-4	1-4-5	1-4-5	2-5-5
Colour Temp.	VK - 3000K, 4000K, 5000K Colour Selectable (4000K default setting)			
CRI	>80			
Distribution	Type IV Short			
Operating Temp.	-40° C to +50° C			
Housing Material	Die Cast Aluminum			
Lens Material	Borosilicate Glass			
Finish	Bronze*, Custom Colours			
Factory Installed Options	Photocell, 10kV Surge Protector, Dimming Motion Sensor, On/Off Motion Sensor, Dimming High Frequency Motion Sensor			
Accessories Sold Separately	Visor, Wire Guard, Wire Cage			
THD (%)	15.0			
PF	0.900			

¹Wattage adjustable units with 5 wattage settings.



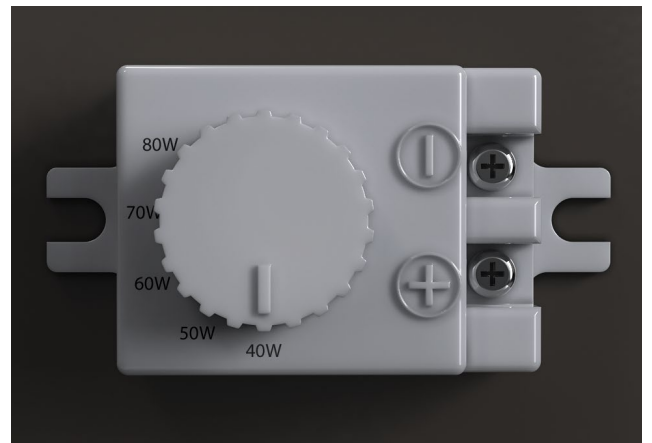
Colour Temperature Selecting Switch Inside:

Choose between 3000K, 4000K or 5000K at the time of installation.



Adjustable Wattage Version Available:

The WP-LED80A40 can be set to 40W, 50W, 60W, 70W or 80W at the time of installation.



Standard Fixtures	Weight (lbs)
WP-LED40	7.8
WP-LED80	8.4
WP-LED80A40	8.4
WP-LED120	9.2

AMPERAGE DRAW & SURGE PROTECTION							
	Current (A)					Surge Protection (kV)	
	120V	208V	240V	277V	347V	120-277V	120-347V
WP-LED40	0.35A	0.21A	0.18A	0.16A		2kV	
WP-LED80	0.7A	0.41A	0.35A	0.31A		4kV	
WP-LED80A40	0.7A	0.41A	0.35A	0.31A	0.25A		4kV
WP-LED120	1.05A	0.61A	0.53A	0.46A	0.37A		6kV

LUMEN MAINTENANCE			
	50,000 Hours	75,000 Hours	100,000 Hours
WP-LED40	90%	86%	81%
WP-LED80	90%	86%	81%
WP-LED80A40	90%	86%	81%
WP-LED120	90%	86%	81%

ORDERING GUIDE:

WP		VK			DIM		
Fixture	Wattage	Voltage	Colour Temp.	Paint Finish	Driver	Controls	Options
LED40		B - 120-277V (for WP-LED40, WP-LED80, or see Note)	VK - Colour Selectable (3K/4K/5K)	BRZ - Bronze	DIM - 0 -10V Dimming	PC - Photocontrol**	Blank
LED80*				CC - Custom Colours		DMS - Dimming Motion Sensor (PIR)**	SP10 - 10kV Surge Protector**
LED80A40		H - 120-347V (for WP-LED40, WP-LED80A40, WP-LED120)				SMS - ON/OFF Motion Sensor (PIR)**	
LED120		C - 347V (See Note)				DHFS - Dimming High Frequency Microwave Sensor (Compatible with 120-347V)	

**If you require 347V in 80W, select the WP-LED80A40 unit

**When ordering WP-LED40, WP-LED80A40 or WP-LED120 with photocell, sensor or surge protector, fill "B" in the voltage field if input voltage is 120-277V or "C" instead of H when input voltage is 347V.

Ordering Guide For Accessories

Check the items that you wish to order:

- 080731 - WP-LED CUTOFF VISOR BRZ
- 080732 - WP-LED WIRE GUARD
- 098710 - WP WIRE CAGE CHROME PLATED STEEL
- 087016 - RC100 MOTION SENSOR REMOTE CONTROL
(One remote control required per order to configure custom settings for the DHFS motion sensor. No remote control option for DMS and SMS sensors.)