

WATER SUCTION HOSE ASSEMBLIES



Hose I.D. **Length** **Part Number**

Using a high molecular weight PVC, Blue Water can be used year-round for water suction lines in construction, rental, mining, and agricultural applications. Rated to -40°C.

G941BW... BLUE WATER SUCTION

Complete with Female Cam-Lock & Combination Nipple

1 1/2"	20 ft	G941BW-150CM20
2"	20	G941BW-200CM20
3"	20	G941BW-300CM20
4"	20	G941BW-400CM20
6"	20	G941BW-600CM20

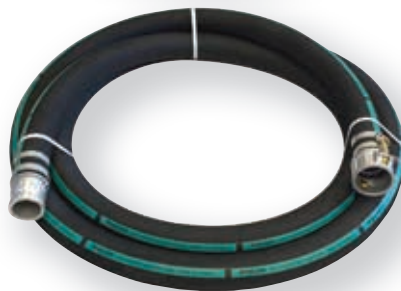
G341 is the "traditional" suction hose still preferred by many users for heavy construction, municipal, dewatering, and mining applications. All 4" & 6" G341 Suction Hose Assemblies come complete with crimped end fittings. Rated to -40°C.



G341... HEAVY DUTY RUBBER SUCTION

Complete with Female Cam-Lock & Combination Nipple

1 1/2"	20	G341-150CM20
2"	20	G341-200CM20
3"	20	G341-300CM20
4"	20	G341-400CM20
6"	20	G341-600CM20



Complete with Male & Female Cam-Locks

2"	20	G341-200CE20
3"	20	G341-300CE20
4"	20	G341-400CE20
6"	10	G341-600CE10
6"	20	G341-600CE20



G341C is ideal for large bore dewatering and other applications where full vacuum is required. All G341C Suction Hose Assemblies come complete with crimped end fittings. Rated to -35°C.

G341C... CORRUGATED HEAVY DUTY RUBBER SUCTION

Complete with Male & Female Cam-Locks

6"	20	G341C-600CE20
8"	20	G341C-800CE20

Complete with Type B Male & Female Ball-Locks

6"	10	G341C-600BL10
8"	10	G341C-800BL10

Complete with Type A Male & Female Ball-Locks

12"	10	G341C-1200BLA10
-----	----	-----------------

Complete with Grooved Ends

8"	20	G341C-800VV20
----	----	---------------



Note: To include a strainer with your assembly, please see Section 2 of our Fittings Catalog to select the strainer best suited for your needs. For suction hoses with male and female cam-locks, we offer our **G34SK Removable Strainer**.