

Project: \_\_\_\_\_ Type: \_\_\_\_\_

Drawn by: \_\_\_\_\_ Catalogue #: \_\_\_\_\_ Date: \_\_\_\_\_

## Individual Spec Sheet

# EXTRUSION

## SERIES 200

Tapes Accessories





### ORDERING INFORMATION

**Order code:** 65866  
**Model number:** EXTRUSION/200/8'/ALUM/STD  
**UPC:** 069549658660  
**Case quantity:** 10



### PHYSICAL DATA

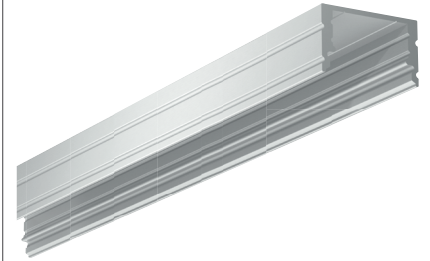
Series: 200  
 Type: Deep Extrusion  
 Length : 8 ft. (2.4 m)  
 Width: ¾ in. (19 mm)  
 Height: 7/16 in. (12 mm)  
 Maximum LED Tape Width: 14 mm  
 Material : ALCOA 6063 T-5 aluminum alloy

### COMPATIBLE LENSES

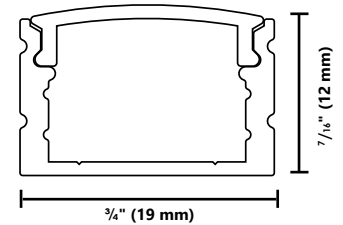
-  65871 LENS/8'/CLEAR/STD
-  65872 LENS/8'/OPAL/STD
-  65873 LENS/8'/FROSTED/STD
-  65874 LENS/8'/DIFFUSED/STD

### COMPATIBLE END CAPS

-  65898 EXTRUSION/200/ENDCAP/HOLE/STD 10P
-  65899 EXTRUSION/200/ENDCAP/PLAIN/STD 10P



### DIMENSIONS



FIXING CLIPS CHART			
EXTRUSIONS SERIES	2 FIXING CLIPS	4 FIXING CLIPS	6 FIXING CLIPS
Series 100	1-36 inches (1-3 ft)	37-96 inches (4-8 ft)	/
Series 200	1-36 inches (1-3 ft)	37-96 inches (4-8 ft)	/
Series 210 <sup>1</sup>	1-36 inches (1-3 ft)	37-96 inches (4-8 ft)	/
Series 400	1-36 inches (1-3 ft)	37-96 inches (4-8 ft)	/
Series 300	1-24 inches (1-2 ft)	25-72 inches (3-6 ft)	73-96 inches (6-8 ft)
Series 500	1-36 inches (1-3 ft)	37-96 inches (4-8 ft)	/
Series 600	3M Double Face Tape		

<sup>1</sup> Can be installed with Silicone or Epoxy for certain applications



Qty	Description	Price

I accept the specifications of the luminaire configuration mentioned above.

Name: \_\_\_\_\_  
 Company: \_\_\_\_\_  
 Signature: \_\_\_\_\_

Date: \_\_\_\_\_

Data is based upon tests performed in a controlled environment. Actual performance can vary depending on operating conditions. All products are subject to change or may be discontinued any time without notice.