

Switches and Lighting Controls

Decorator Series, 15A 125V AC

1) Single Receptacle, 1) Single Pole Rocker

Features

- Smooth, quiet rocker
- Low profile, less than 1 inch deep
- Self-grounding feature is standard
- Residential Grade

Ordering Information

| | | |
|-----------------------|----------------------------|----------------------------------|
| Color White | UPC 883778110153 | Catalog Number RCD108W |
|-----------------------|----------------------------|----------------------------------|

Listings

CSA Certified
UL Listed E3896

Specifications

| | |
|--------------------------|--------------------------------------------------------------|
| Action | Snap Switch |
| Contact Configuration | Two Position |
| Environmental Conditions | Indoor Dry Unless Protected By Additional Means |
| Operating Cycles | 30,000 Minimum |
| Operating Temperature | Max Continuous- 60 Degrees C, Minimum- -20 Without Impact |
| Wattage | 1875 |

Performance

| | |
|----------------------|-------------------------------------------|
| Electrical | |
| Dielectric voltage | Withstands 1,500V AC minimum for 1 minute |
| Endurance | 30,000 cycles minimum |
| Max. working voltage | 120V |
| Overload | 1.5 times rating |

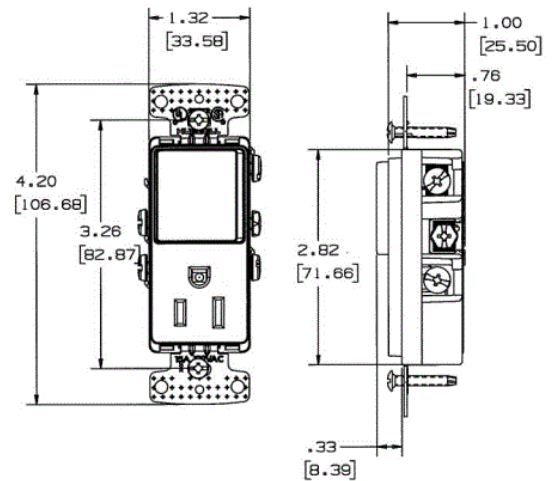
Mechanical

| | |
|------------------------|--------------------------------------------------------------------------------------------------------------------------------|
| Terminal accommodation | Back and side wire: #14 AWG min. - #12 AWG max. solid and stranded copper wire only; push wire: #14 AWG solid copper wire only |
|------------------------|--------------------------------------------------------------------------------------------------------------------------------|

Environmental

| | |
|------------------------|---------------------------------------------------------|
| Flammability | UL V-0 |
| Operating Temperatures | Maximum continuous 60°C; minimum -20°C (without impact) |

HUBBELL



Online Resources

Customer Sales Drawings
eCatalog
Installation Instructions

Dimensions in Inches (mm)

Hubbell Wiring Device-Kellems • Hubbell Incorporated (Delaware) • 40 Waterview Drive • Shelton, CT 06484

Phone (800) 288-6000 • Fax (800) 255-1031 • Specifications subject to change without notice.

