



Continuous light element, green, 12-230 V AC/DC, 50 mm diameter, base BA 15d without light element

| | | |
|---|--------------------------|---------------------------|
| product brand name | SIRIUS | |
| product designation | Continuous light element | |
| design of the product | without light source | |
| General technical data | | |
| type of voltage of the operating voltage | AC/DC | |
| operating voltage | | |
| • at DC rated value | 12 ... 230 V | |
| • at AC at 50 Hz rated value | 12 ... 230 V | |
| • at AC at 60 Hz rated value | 12 ... 230 V | |
| reference code according to EN 61346-2 | P | |
| Lamp | | |
| product component light source | No | |
| type of light source | filament lamp / LED | |
| design of the optical signal | continuous light | |
| socket design | BA 15d | |
| Enclosure | | |
| height | 67 mm | |
| width | 52 mm | |
| outer diameter of the signal column element | 50 mm | |
| material | PC | |
| color | green | |
| fastening method | Bayonet | |
| protection class IP | IP54 | |
| Ambient conditions | | |
| ambient temperature during operation | -20 ... +60 °C | |
| Certificates/ approvals | | |
| General Product Approval | EMC | Declaration of Conformity |

[Confirmation](#)



other

[Confirmation](#)

Further information

Siemens has decided to exit the Russian market (see here).

<https://press.siemens.com/global/en/pressrelease/siemens-wind-down-russian-business>

Siemens is working on the renewal of the current EAC certificates.

Please contact your local Siemens office on the status of validity of the EAC certification if you intend to import or offer to supply these products to an EAC relevant market (other than the sanctioned EAEU member states Russia or Belarus).

Information on the packaging

<https://support.industry.siemens.com/cs/ww/en/view/109813875>

Information- and Downloadcenter (Catalogs, Brochures,...)

<https://www.siemens.com/ic10>

Industry Mall (Online ordering system)

<https://mall.industry.siemens.com/mall/en/en/Catalog/product?mlfb=8WD4200-1AC>

Cax online generator

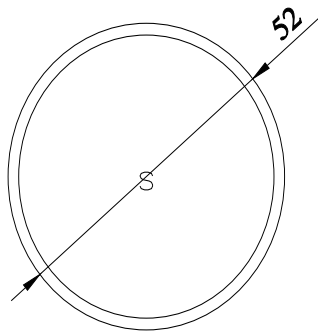
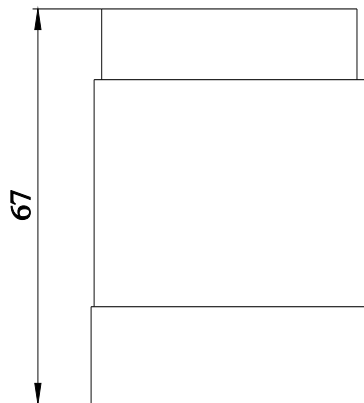
<http://support.automation.siemens.com/WW/CAXorder/default.aspx?lang=en&mlfb=8WD4200-1AC>

Service&Support (Manuals, Certificates, Characteristics, FAQs,...)

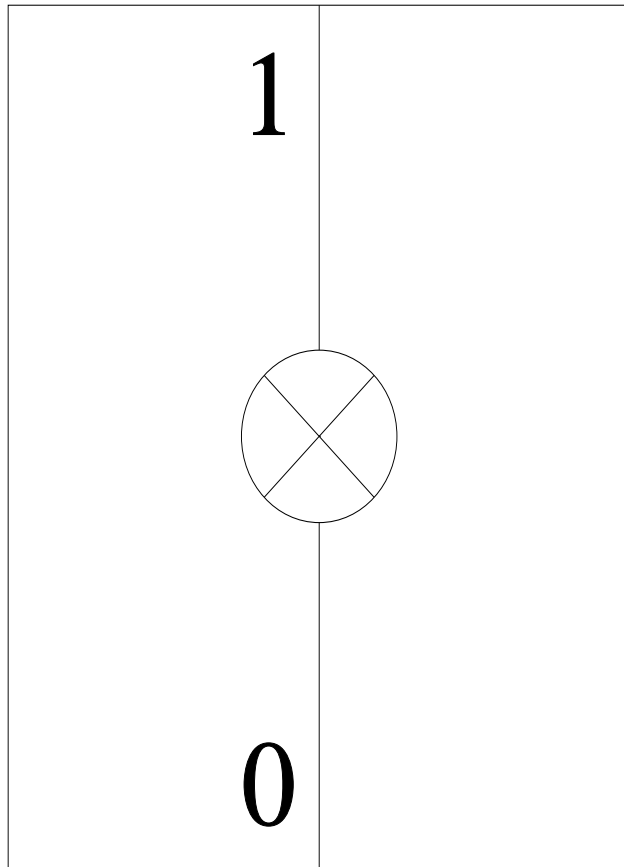
<https://support.industry.siemens.com/cs/ww/en/ps/8WD4200-1AC>

Image database (product images, 2D dimension drawings, 3D models, device circuit diagrams, EPLAN macros, ...)

http://www.automation.siemens.com/bilddb/cax_de.aspx?mlfb=8WD4200-1AC&lang=en



-P



last modified:

2/25/2021 