
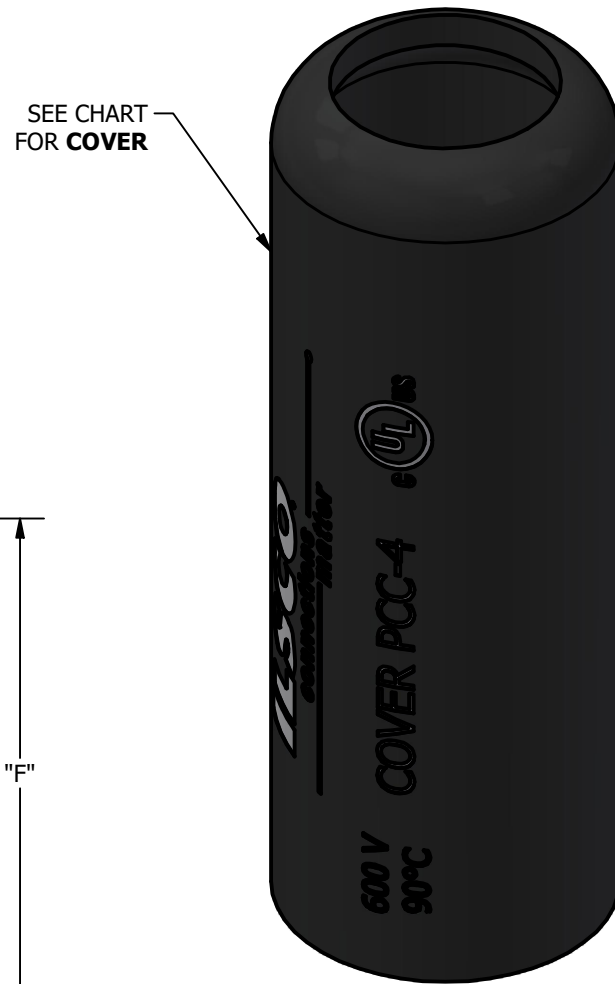
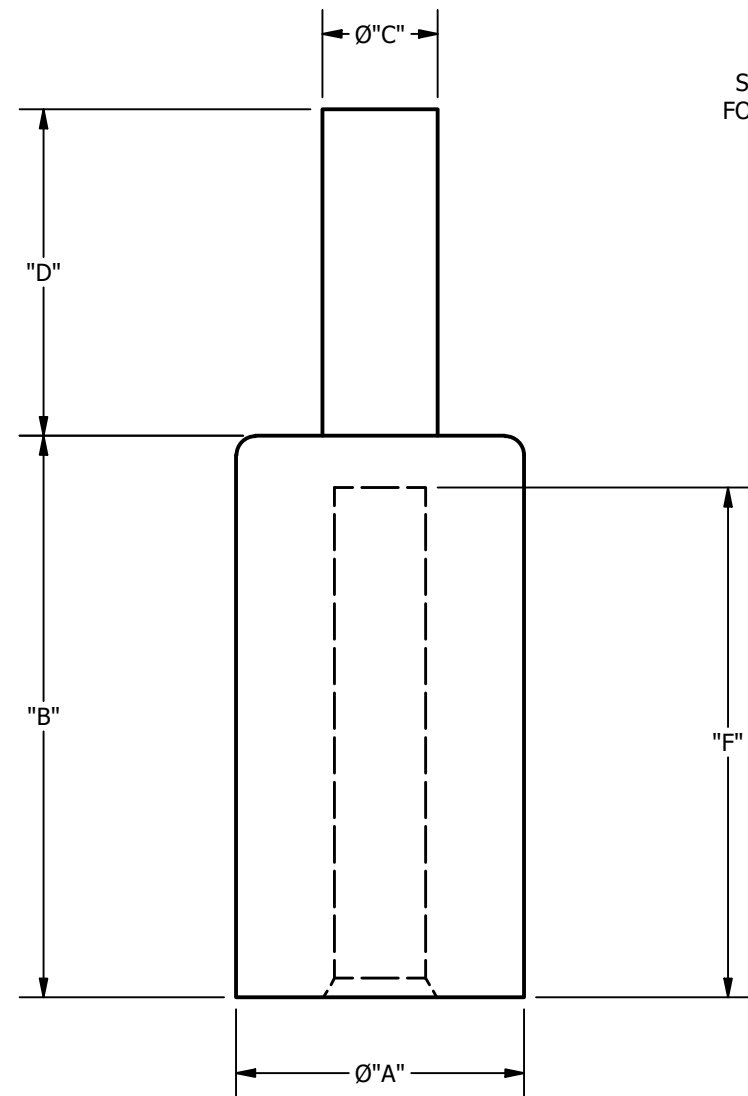


**NOTE:**

1. TIN PLATED ALUMINUM COMPRESSION PIN ADAPTERS.
2. PRE-FILLED WITH DE-OX INHIBITOR.
3. INSULATING COVER SUPPLIED WITH CONNECTOR

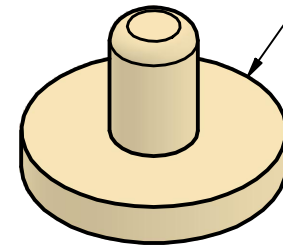
SCREW: NONE	MATERIAL: ALUMINUM/PLASTISOL	REV: B	 <small>800-776-9775 www.ilsco.com</small>
END ITEM: SEE CHART	PLATING: TIN	DRAWN BY:LU	
INFORMATION SHEET:FORM 287	MARKING: SEE DRAWING	DATE:2/17/2023	
		SCALE:	SIZE: B
		DWG NO:	<b>J0706-J0720</b>
		SHEET:	1 OF 1



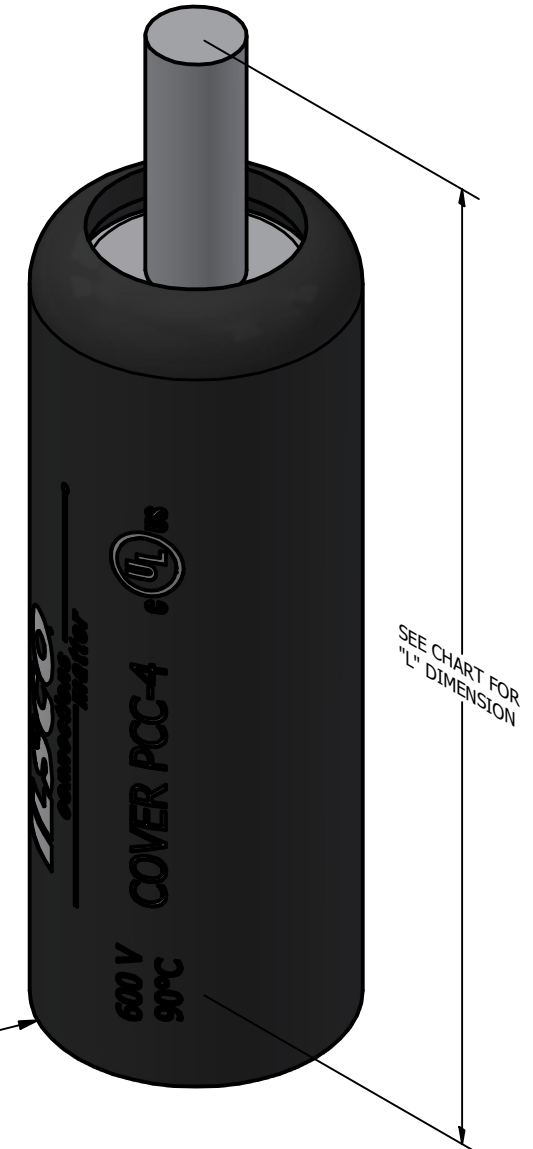
SEE CHART FOR COVER



SEE CHART FOR CONNECTOR



SEE CHART FOR PLUG COLOR



SEE CHART FOR "L" DIMENSION

SEE CHART FOR "L" DIMENSION

CATALOG NUMBER	COVER CATALOG NUMBER	COLOR PLUG	"L"	"W"	"A"	"B"	"C"	"D"	"F"
ACMN-6	PCC-4	TAN	2.813	0.789	0.600	1.170	0.240	0.680	1.062
ACMN-4	PCC-4	TAN	2.813	0.789	0.600	1.170	0.240	0.680	1.097
ACMN-2	PCC-4	TAN	2.813	0.789	0.600	1.170	0.240	0.680	1.090
ACMN-1	PCC-4	TAN	2.973	0.789	0.600	1.170	0.260	0.840	1.103
ACMN-1/0	PCC-4	TAN	2.973	0.789	0.600	1.170	0.290	0.840	1.080
ACMN-2/0	PCC-7	WHITE	3.318	1.070	0.850	1.370	0.330	0.840	1.210
ACMN-3/0	PCC-7	WHITE	3.698	1.070	0.850	1.370	0.370	1.220	1.234
ACMN-4/0	PCC-7	WHITE	3.698	1.070	0.850	1.370	0.420	1.220	1.245
ACMN-250	PCC-9	BROWN	3.948	1.285	1.100	1.410	0.470	1.220	1.200
ACMN-300	PCC-9	BROWN	4.068	1.285	1.100	1.410	0.530	1.340	1.219
ACMN-350	PCC-9	BROWN	4.068	1.285	1.100	1.410	0.570	1.340	1.232
ACMN-400	PCC-11	PINK	4.707	1.495	1.310	1.480	0.630	1.600	1.280
ACMN-500	PCC-11	PINK	4.707	1.495	1.310	1.480	0.680	1.600	1.240
ACMN-600	PCC-12	YELLOW	4.998	1.895	1.460	2.030	0.730	1.640	1.759
ACMN-750	PCC-12	YELLOW	5.118	1.895	1.460	2.030	0.810	1.760	1.759