

FLASHLIGHTS

THE STICK BUG

The Pocket Light just got brighter, stronger and better. Some call it supercharged! With the new technology of COB LED technology, it has 150/160 lumens - 2 times the amount of the original pocket light. With the durable and strong pocket clip and improved magnetic base, you'll never be left out in the dark again

FEATURES:

- COB LED
- 160 Lumens
- Operates on (3) AAA batteries
- Up to 7 hours run time
- Water resistant button

Part# 53500
Stick Bug Jr.
60 lumens



Part# 53600
Stick Bug
160 lumens



HEAD LIGHT

USB RECHARGEABLE

Part# 54075
Bulb: COB LED
Max Output: 150 Lumens
3 Modes: High, Low and Strobe
Runtime: High (4 Hours) Low (12 Hours)
4-hour charge time
Impact and Water Resistance

STANDARD BATTERY OPERATED

Part# 54050
Features:
Bulb: COB LED
3 AAA Batteries Included
Runtime: 5 hours
Max Output: 150 Lumens



BAT LIGHT

The Bat flashlight has a durable, scratch and corrosion resistant anodized aluminum frame.

10" Bat Flashlight

Part# 53700
- 3W Cree LED 300 Lumens
- 3 x AA Batteries Included

12" Bat Flashlight

Part# 53750
- 3W Cree LED 300 Lumens
- 3 x AAA Batteries Included



THE SILVER BULLET

Part# 53800
12-24v Car Charger Flashlight
CREE LED 300 Lumen
Li-ion Battery
Aluminum Alloy
Recharge Time 2-3 hours

FIREFLY

Part# 53400
The Fire Fly is a compact aluminum flashlight that features 3 light outputs with and has an output of 120 lumens.

FEATURES:

- 120 lumen output
- Light Modes: High output, low output, flash
- Mechanical zoom function
- 3 AAA batteries included

THE OWL EYE

Part# 53300
Multi-function electronic switch. Softly press the switch once for high output. Press the switch and hold for dimming function (10%-100% brightness), press quickly two times at any position for strobe function.
Takes 3X AAA Batteries (not included)

FEATURES:

- Waterproof
- Dustproof
- 120 Lumens

GLOW SAFE 360°

The Glow Safe 360 attaches to any hard hat and produces a ring of light around the wearer, enabling him or her to be easily seen in all directions.



FEATURES:

- Shadow-free, panoramic visibility
- Non-slip hard hat attachment
- Only 40 grams (1.4 oz) extra hard hat weight
- Powered by two button cells or rechargeable LED
- Operates up to 24 hours with premium brand batteries or USB Charger

Part#s
54000 - Standard
54020 - Rechargeable



PLUG MASTER

The Plug Master combines a full function dual-outlet circuit tester with 220V detection and multiple direction bubble-levels. Eliminate the need for multiple tools to test and straighten any wall outlets.

FEATURES:

- Acts as horizontal and vertical level
- Use for diagnostics
- Perform quick wiring checks
- Panel identifies conditions shown by LED indicators
- Removable side panels cover outlet during insertion



Part# 99102

AC SENSOR & ULTIMATE AC SENSOR

Prevent electrical shock with this simple tool to locate dangerous defective grounds. This handheld device helps you determine the presence or absence of 50-1000 Volts AC in insulated wires, wall receptacles, fuses, junction boxes, and voltage carrying electrical systems. The bright, red glow indicates AC voltage.

FEATURES:

- Non-contact detection of 50-1000 VAC
- Includes 2 replaceable AAA alkaline batteries
- Senses voltage without metallic contact
- Outstanding safety instrument



Part# 99000 (Red Glow - No Sound)



Part# 99001 (Red Glow - w/Sound)

DUALCHECK™ NON-CONTACT VOLTAGE TESTER

Save time and money with 2 popular testers in 1 unit - featuring a Non-Contact Voltage Detector on one end and GFCI Outlet Tester on the other.

FEATURES:

- 360 degree LED indication
- Loud beeping audible indication
- Exclusive 1 LED readout. No Charts. Instant results
- On/Off button



Part# 99150

JET LEVEL

This convenient and strong pocket level comes with 4 precision vials of 0, 30, 45, and 90 degrees.

FEATURES:

- CNC milled from 6061 aluminum extra large "VD" groove, straddles up to 10" diameter
- Rare Earth magnets for extra holding
- Water and shock resistant



Part# 45404

SHOPPE ROCKET

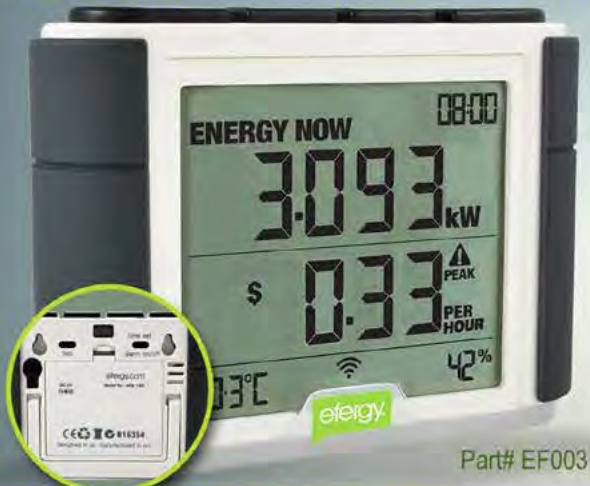
This tool offers a better, faster, more cost effective solution for tasks commonly performed by electricians, plumbers and pipe fitters. Trade professionals will now have a multi-function tool that is designed to perform a number of tasks simultaneously & accurately, while increasing efficiency and reducing material waste.

- Multi-function leveling system provides an easier and faster way to create multiple bends on a single conduit.
- Built with aerospace engineered high impact polymer resin, this durable material will provide years of use for all trade professionals.
- Super grip rare earth magnets for hands free use on any magnetic surface



Part# 45200

EFEERGY ELITE Classic



Part# EF003

Wireless Energy Monitor

Save up to 15% on your electricity bill through greater awareness!



The Elite Classic is our latest and renewed version of our Elite Wireless Power Monitor. It updates every 10 seconds so you can instantly see the impact of turning a light on or off, boiling the kettle or using your tumble dryer. It has an innovative memory function that allows you to see how much you have used today, yesterday and in the last week or month. The Elite Monitor also displays your daily average so you can see when you are using more electricity than normal and see how your average usage reduces as you change the way you do things
- Great for sub panels to monitor tenant energy use

Accessories

100A Current Sensor

Additional sensor for measuring current up to 100 amperes. Works with the elite or e2. These sensors are compact so they are suitable for use in air conditioning disconnects or any other location where space is limited. Split core design easily fits around wire sizes up to #2 AWG without breaking any connections.



Part# EF009

200A Current Sensor

Additional sensor for measuring current up to 200 amperes. Works with the elite or e2. Perfect for whole house applications where a 200 ampere service is installed. Split core design easily fits around wire sizes up to #4/0 AWG without breaking connections.



Part# EF012

Hub Online Accessory Kit

Monitor your home energy use online in real-time engage hub accessory kit. Online platform FREE of charge with no subscription or monthly fees Access your energy data anytime, from anywhere



Part# EFH01

EZ GENERATOR SWITCH

EZ Generator Switch is the most affordable & efficient generator connecting manual transfer switch on the market. We are the only company in both the United States & Canada that builds switches that are matched to your exact generator. Our switches are safe and code compliant.



EFFICIENT

Our switches energize only essential circuits such as; heating circuits, kitchen circuits, lighting circuits, hot water systems, sump pumps and general outlets. Because you are only energizing essential circuits the need for large inefficient generators are not needed. More user friendly, fuel economical generators can be used.

AFFORDABLE

Because we have designed an essential circuit transfer switch that only handles the items you need during power outages we are able to provide you with the lowest cost manual transfer switch on the market. By only powering essential items during power outages, there is no need for larger, more expensive systems which also require larger generators, expensive systems which also require large generators. We conform to CAN/CSA Std. C22.2 #14 and UL standard 1640

Part# 99215



AERIAL TOOL BIN

The Aerial Tool Bin offers a safe and efficient way of storing your tools at waist height while on a variety of Man-Lifts. It is designed to be used on: Aerial Platforms, Scissors Lifts, Boom Lifts, Scaffolding, Swing Stage Railings, and Mast Climbers.



Part# ATB1312



*Tools sold separately

LADDER MATE

MULTI-USE LADDER ORGANIZER

Part# 65300

TOOL HOLDER & PAINT TRAY WITH ADJUSTABLE DIVIDERS

- EASY TO ATTACH
- ADAPTER CLIPS INCLUDED
- WORKS WITH MOST FIBERGLASS, ALUMINUM & WOOD STEP LADDERS

*Tools sold separately



ShinMate

LADDER GUARD

- PART#
65100 - STEP LADDER SHINMATE
65200 - EXTENSION LADDER SHINMATE

TAKE THE STRESS OFF OF YOUR KNEES, SHINS & LEGS

The Shinmate provides SUPERIOR COMFORT & BETTER BALANCE. Designed by a tradesman for tradesmen, electricians, painters, carpenters & window washers or anyone who works on ladders for hours on end will benefit from the ShinMate.



VAN MAGNETS

*All Van Magnets Include carabiner



Part# RV010 - 10 lbs 4 Pack



Part# RV025 - 25 lbs 3 Pack



Part# RV050 - 50 lbs 2 Pack



KEEP IT CLEAN

RACKY WIPES

Available in 2 different size bags, Racky Wipes are convenient, affordable rags made from recycled t-shirt material.

Part#
RAG05C - 5 lbs. colored
RAG10C - 10 lbs. colored



4' x 6' DROP SHEET

Every van needs a drop sheet for those days when you gotta make a mess!



PART# RAG46C

BOOTY PACK

Kit includes: 6 pairs of booties, 4 pairs of nitrile gloves, 4 pairs of vinyl gloves, and 3 N95 respirators



PART#
47099 - BOOTY PACK
47099B - BOOTIES ONLY (40 PAIRS)
47099BB - SIX PACK OF BOOTIES



TIMBERWOLF: WATERLESS HAND CLEANER

Packed with a variety of uses this hand cleaner isn't just for getting rid of dirt and grime it also makes for a great anti-itch remedy!

Features:
- Biodegradable
- Contains no petroleum solvents
- Repels mosquitoes
- Prevents and relieves bug bits & poison ivy symptoms

Part#'s
TW008 - 8oz. Bottle
TW016 - 16 oz. Bottle
TW100 - 1 Gallon Jug W/ Pump
TW714 - Wipes Cannister

KEEP IT STORED

Pop Open Garbage Can

- 9" x 7.5" x 10" while in use
- Folds flat for easy storage
- Perfect for quick cleanups
- Includes handy pipe bending reference guide & Ohms law wheel

Part# 51010



Exploding GARBAGE CAN

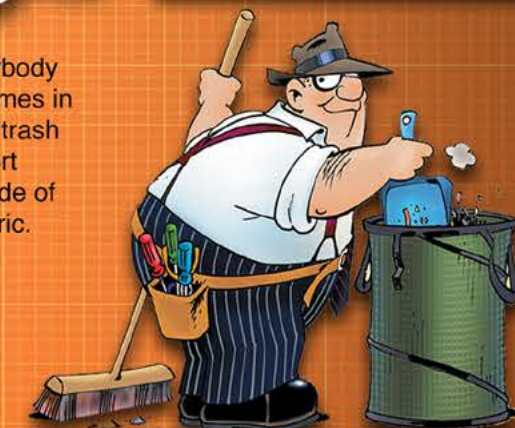
One of our classic products that everybody loves, the Exploding Garbage Can comes in use every single day. This collapsible trash container, featuring an internal support spring that "springs into action", is made of heavy duty, tear resistant polytuff™ fabric.

SEE THEM IN ACTION



FEATURES:

- Size of 19" x 24" when open
- Size of 1 1/2" x 24" when collapsed



PART# 51000

RECYCLE THOSE OLD EXPLODING BOXES... GO-GREEN WITH REUSABLE CONTAINERS!



PART# REJAR

No more spilling screws on the job because of a flimsy box. Reusable Containers from Rack-A-Tiers are a great way to organize your van, and go green at the same time!

