

# LADDER MATE

## MULTI-USE LADDER ORGANIZER

### TOOL HOLDER & PAINT TRAY WITH ADJUSTABLE DIVIDERS

- Easy to attach
- Adapter clips included
- Works with most fiberglass, Aluminum & wood step ladders



\*Tools Sold Separately  
Part# 65300

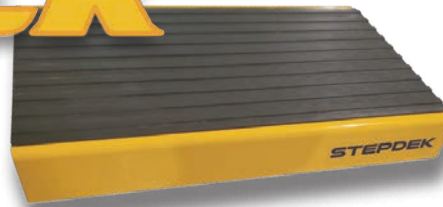


# STEPDEK

The StepDek attaches to the ladder rung which provides a wider platform for users to stand on. Will work with most standard A-Frame aluminum ladders.

### PRODUCT FEATURES:

- Easily attaches to most A-Frame ladders
- Rubberized non-slip comfort pad
- Durable aluminum design
- 11.5 x 7.3 x 2



Part #65250

# Aerial Tool Bin

THE AERIAL TOOL BIN OFFERS A SAFE AND EFFICIENT WAY OF STORING YOUR TOOLS AT WAIST HEIGHT WHILE ON A VARIETY OF MAN-LIFTS. IT IS DESIGNED TO BE USED ON: AERIAL PLATFORMS, SCISSORS LIFTS, BOOM LIFTS, SCAFFOLDING, SWING STAGE RAILINGS, AND MAST CLIMBERS.



### PRODUCT FEATURES:

- Made with reinforced, high density, non-conductive, UV protected, light-weight durable orange polypropylene plastic.
- Fits square or rounded 90 degree corners.
- 2 removable partition walls allow you to keep your tools separated and organized.
- Built in handle for easy transport.

\*TOOLS SOLD SEPERATELY  
Part# ATB1312

THE STAPLE SHARK IS A DUAL-ENDED TOOL! ONE END IS USED FOR PULLING OUT CABLE STAPLES IN ONE QUICK MOVEMENT. THE OTHER END IS A MULTI-PURPOSE PRY BAR FOR POPPING OUT BASEBOARDS OR PULLING OUT NAILS. THIS UNIQUE TOOL PROVIDES EASY STAPLE PULLING FOR ANY SIZE OF CABLE STAPLE. IT HAS MULTIPLE USES FOR JUST A SIMPLE TOOL: PULL STAPLES, HOLD STAPLES IN TIGHT AREAS, SPEED SQUARE, PRY BAR, NAIL PULLER AND EVEN A BOTTLE OPENER.



STAPLE PULLER!



HOLDS STAPLES!



PRY BAR!



RULER!



BEER OPENER!

- Made of hardened steel.
- Includes a handy nail puller and pry bar for multi-purpose use.
- Ruler for quick on the job measurements.
- Use as a quick carpenter's square.
- Hammer staples into tight spots with the built in slots.
- Acts as a beer bottle opener at the end of the day.



Part #52455



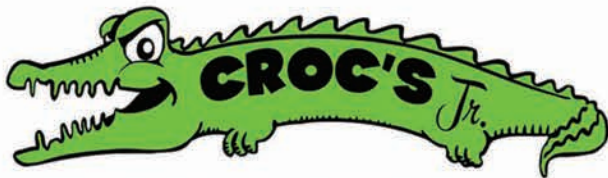
## NEEDLE NOSE WIRE STRIPPERS

Sometimes referred to as the best wire strippers on the market, the Croc's Needle Nose Wire Strippers will impress even the toughest critics. These strippers have countless features, each designed to make your job easier and more productive.

### FEATURES:

- Glow in the dark handles
- Ergonomic handle design for maximum comfort
- Needle nose tips
- Strip from 22-10 AWG
- Barrel Sleeve Crimper
- NMSC cutter near the "nose" of the stripper
- 8-32 and 6-32 bolt cutters

Part# 47000

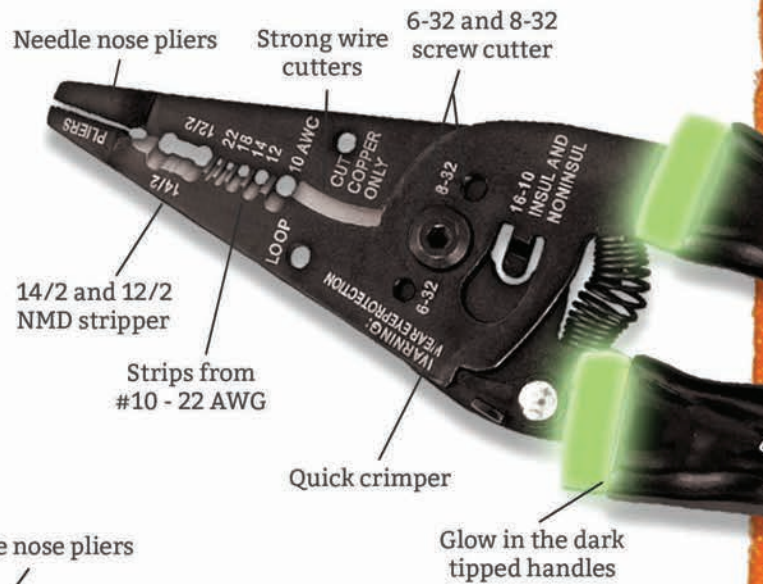


Introducing the Croc's Jr., A compact and lightweight version of the original. This model serves as an affordable predecessor to the original without skimping on its numerous applications.

### FEATURES:

- Glow in the dark handles
- Ergonomic handle design for maximum comfort
- Compact design
- Strip from 22-8 AWG
- 8-32 and 6-32 bolt cutters

Part# 47002



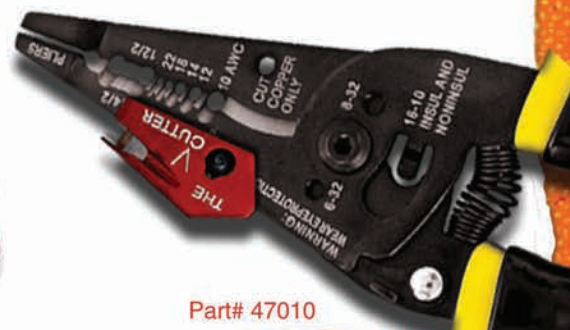
## ELECTRICIAN'S ADD-ON CABLE STRIPPER

**STRIPS CABLE IN OR OUT OF ELECTRICAL BOXES WITH EASY TO PUSH ACTION**

One of the smartest inventions to come to market this decade is the V-Cutter. This simple little blade attaches to most wire strippers and allows you to strip cable with a single swipe.

### FEATURES:

- A new way to strip NMSC cable
- Easily attaches to most wire strippers
- Strips cable in or out of electrical boxes with action
- Virtually eliminates nicking or cutting the wire insulator



Part# 47010

# JAVELIN

## ALL IN ONE DRILLING EXTENSION

New  
Reduced  
Price!

The Javelin is here to change the way we drill holes. Never get caught in a drilling extension jam again! This all-in-one extension drill can reach up to 10 feet. It comes with a fully adjustable hole cutter and auger bit extension kit. Just cut a 3/8" - 16 threaded rod to any length you need.

### FEATURES:

- Holds drivers bits
  - Holds nut drivers
  - Holds drill bits
  - Reaches up to 10 feet long
- Part# 95000



## QUATTRO FLEX AUGER BITS

Fast and aggressive self feed auger bits, welded to a flexible shaft. Cuts clean holes. Crossbored at both ends for easy wire pulling. Use for wood only.

Part# QTT3824	3/8"x24"	Part# QTT1224	1/2"x24"	Part# QTT91624	9/16"x24"	Part# QTT3424	3/4"x24"
Part# QTT3836	3/8"x36"	Part# QTT1236	1/2"x36"	Part# QTT91636	9/16"x36"	Part# QTT3436	3/4"x36"
Part# QTT3848	3/8"x48"	Part# QTT1248	1/2"x48"	Part# QTT91648	9/16"x48"	Part# QTT3448	3/4"x48"
Part# QTT3854	3/8"x54"	Part# QTT1254	1/2"x54"	Part# QTT91654	9/16"x54"	Part# QTT3454	3/4"x54"
Part# QTT3872	3/8"x72"	Part# QTT1272	1/2"x72"	Part# QTT91672	9/16"x72"	Part# QTT3472	3/4"x72"

More sizes available



## HIGH SPEED STEEL

Superior quality M-2 High Speed Steel drill bit welded to a flexible shaft. Cuts both metal and wood. No need to worry about hidden nails or metal studs when drilling.

Part# FLX1424	1/4"x24"	Part# FLX3824	3/8"x24"	Part# FLX1224	1/2"x24"
Part# FLX1436	1/4"x36"	Part# FLX3836	3/8"x36"	Part# FLX1236	1/2"x36"
Part# FLX1448	1/4"x48"	Part# FLX3848	3/8"x48"	Part# FLX1248	1/2"x48"
Part# FLX1454	1/4"x54"	Part# FLX3854	3/8"x54"	Part# FLX1254	1/2"x54"
Part# FLX1472	1/4"x72"	Part# FLX3872	3/8"x72"	Part# FLX1272	1/2"x72"

## GUIDE TOOL

Allows the Piranhbits to bend for drilling from outside the wall cavity.



Part# FIB-GUD

# SWITCH BITS

## INTERCHANGEABLE FLEX BITS

Rack-A-Tiers is proud to announce the Switch Bit line, our newest line of flexible installer bits. Quickly and easily customize your own set with these flexible bits featuring interchangeable heads and different shank lengths to fit any job.

ETS31621	SINGLE SHANK	3/16"	21"
ETS31633	SINGLE SHANK	3/16"	33"
ETS31654	SINGLE SHANK	3/16"	51"
ETS31669	SINGLE SHANK	3/16"	69"
ETS1421	SINGLE SHANK	1/4"	21"
ETS1433	SINGLE SHANK	1/4"	33"
ETS1454	SINGLE SHANK	1/4"	51"
ETB38316	INTERCHANGEABLE HEAD	3/8"	
ETB916316	INTERCHANGEABLE HEAD	9/16"	
ETB3414	INTERCHANGEABLE HEAD	3/4"	

ETC38S316	SWITCHBIT COMBO HEAD (3/8") & SHANK (3/16" x 33")
ETC916S316	SWITCHBIT COMBO HEAD (9/16") & SHANK (3/16" x 33")
ETC34S14	SWITCHBIT COMBO HEAD (3/4") & SHANK (1/4" x 33")



## SOFFIT BIT FOR OVERHEAD SERVICE MASTS

The Soffit Bit is specifically designed to drill through a soffit in a single pass for an overhead mast. The Soffit Bit will drill through multiple materials including wood, nails, aluminum and more.

The Soffit Bit includes a built in arbor, wood or masonry bit.

Part#  
Wood Holesaw - 95224W  
Metal Holesaw - 95124M



COMING SOON! →