

TECHNICAL DATA SHEET

Seal Gaskets, series 5260 and 5260-HT

Standard and high temperature solutions

T&B Liquidtight Systems®



Standard



High Temp

Liquid-tight Seal Gaskets provide excellent ingress protection between conduit fittings and enclosures. Provides high performance protection against dust, oils, liquids, washdown and extreme temperature environments.

Certifications / Standards:



Features & Benefits:

- Designed for use with T&B Liquidtight Systems fittings and connectors
- Meets UL and CSA requirements
- Trade sizes from 3/8" to 4" (12mm to 100mm)
- Designed for use with NPT threaded fittings and connectors
- UL, CSA & IP ingress protection ratings aligned with industrial enclosures
- Stainless Steel retainer prevents crushing and distortion of gasketing material

Applications:

Ser. 5260 "Standard" Blue:

- Used extensively in all liquid-tight applications where excessive temperatures are not present
- Ideal for use with all Liquid-tight Flexible Metallic Conduits
- Ideal for use with all Ser. 5200 and 5300 Liquid-tight Fittings
- Typically used in all liquid-tight applications for liquids, oils, and dust

Ser. 5260-HT "High Temperature" Black:

- Coordinated temperature ratings with Wide and Extreme Temperature LFMC and LT Fittings
- Ideal for use with LTTU and LTTE Wide Temperature Liquid-tight Flexible Metallic Conduits
- Ideal for use with LTXE and LT6XE Extreme Temperature Liquid-tight Flexible Metallic Conduits
- Ideal for use with Ser. 5300-HT & 5300SST6HT High Temperature Liquid-tight Fittings
- Typically used in applications such as foundries, furnaces, ovens, power distribution equipment, pump stations and skids, extremely hot and cold environments

Construction / Material / Finish:

- Stainless Steel 316 retainer ring
- Molded Seals: Thermoplastic Rubber
- Colors:
 - Blue - Standard Ratings
 - Black - High Temperature (-HT) Ratings

Environment rating:

Working Temperature:

- UL (Std & HT): -20 to +105°C (-4 to +221°F)
- CSA (Std & HT): -20 to +105°C (-4 to +221°F)
- General (HT): -60 to +150°C (-76 to +302°F)

Chemical Resistance Guide:

- See Publication TDS000081

Conforms to:

- UL 514B, Fittings for Cable and Conduit
 - File: E23018
- CSA C22.2, No. 18.3, Outlet and Conduit Boxes, Fittings and Accessories
 - File: LR-4484
- IEC/EN 60529, Degrees of Protection (IP Code) Seal Gaskets used in ingress testing of T&B Liquid-tight Fittings
- RoHS (Restriction of Hazardous Substance directive)

Standards requirements:

Designed to UL 514B, UL 50E and CSA C22.2 No. 18.3 standard requirements including:

- Oil immersion, exclusion, hardness, tensile strength and elongation tests

Ingress protection:

- Provides "Ingress Integrity" between liquid-tight fittings and enclosure walls, either NPT threaded entries or knockouts
- Covers all trade sizes from 3/8" to 4" (12mm to 103mm)
- Ingress ratings achieved when used with T&B fittings and conduits.

System ingress ratings:

- Products tested and comply with UL 50E and CSA C22.2 No. 94.2 Type Rating requirements
 - Indoor: Type 4, 4X, 12, 13
 - Outdoor: Type 3, 3R, 4, 4X
 - NEMA 250: Type 3, 3R, 4, 4X, 12, 13

IEC system ingress ratings:

- IP Ingress Protection per IEC/EN 60529 requirements
- IEC Ingress Ratings: IP66, IP67, IP68, IP69

Figure 1:

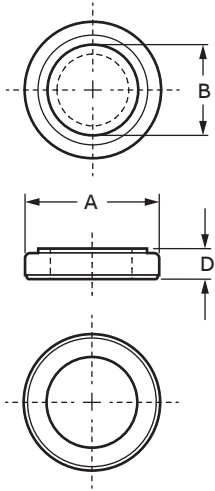
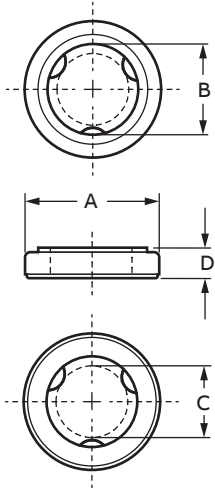


Figure 2:



Product Selection and Dimension										
Part No./GID	Trade Size			NPT Thread	Figure	Dimensions				Weight lbs (kg)
	UL Inches	CSA mm	ISO/BS EN mm			A Inches (mm)	B Inches (mm)	C Inches (mm)	D Inches (mm)	
Standard - Blue										
5299 *	1/4	10	12	1/4"	1	13/16 (20.3)	9/16 (14.1)	-	7/64 (2.8)	0.005 (0.002)
7TAD012420R0040										
5261 *	3/8	12	16	3/8"	1	31/32 (24.4)	11/16 (17.5)	-	7/64 (2.8)	0.006 (0.003)
7TAD012060R0000										
5262	1/2	16	20	1/2"	2	1-5/32 (29.5)	7/8 (21.8)	3/4 (19.1)	11/64 (4.5)	0.008 (0.004)
7TAD012070R0000										
5263	3/4	21	25	3/4"	2	1-1/2 (37.8)	1-1/16 (27.2)	15/16 (23.6)	3/16 (4.9)	0.016 (0.007)
7TAD012070R0001										
5264	1	27	32	1"	2	1-3/4 (44.5)	1-11/32 (33.9)	1-1/8 (29.7)	3/16 (4.9)	0.018 (0.008)
7TAD012070R0002										
5265	1-1/4	35	40	1-1/4"	2	2-5/32 (54.6)	1-11/16 (42.7)	1-33/64 (38.6)	7/32 (5.6)	0.025 (0.011)
7TAD012070R0003										
5266	1-1/2	41	50	1-1/2"	2	2-7/16 (61.5)	1-5/16 (49.1)	1-3/4 (44.5)	15/64 (5.8)	0.030 (0.014)
7TAD012070R0004										
5267	2	53	63	2"	2	2-15/16 (74.2)	2-11/32 (59.4)	2-1/2 (56.6)	15/64 (5.8)	0.064 (0.029)
7TAD012070R0005										
5268	2-1/2	63	70	2-1/2"	1	3-7/16 (87.4)	2-29/32 (73.9)	-	15/64 (5.8)	0.050 (0.023)
7TAD012060R0001										
5269	3	78	80	3"	1	4-1/16 (103.6)	3-17/32 (89.9)	-	15/64 (5.8)	0.055 (0.025)
7TAD012060R0002										
5270	4	103	100	4"	1	5-9/32 (134.4)	4-9/16 (115.6)	-	5/16 (7.9)	0.138 (0.062)
7TAD012060R0003										
High Temp - Black										
5261-HT *	3/8	12	16	3/8"	1	31/32 (24.4)	11/16 (17.5)	-	7/64 (2.8)	0.006 (0.003)
5262-HT	1/2	16	20	1/2"	2	1-5/32 (29.5)	7/8 (21.8)	3/4 (19.1)	11/64 (4.5)	0.008 (0.004)
5263-HT	3/4	21	25	3/4"	2	1-1/2 (37.8)	1-1/16 (27.2)	15/16 (23.6)	3/16 (4.9)	0.016 (0.007)
5264-HT	1	27	32	1"	2	1-3/4 (44.5)	1-11/32 (33.9)	1-1/8 (29.7)	3/16 (4.9)	0.018 (0.008)
5265-HT	1-1/4	35	40	1-1/4"	2	2-5/32 (54.6)	1-11/16 (42.7)	1-33/64 (38.6)	7/32 (5.6)	0.025 (0.011)
5266-HT	1-1/2	41	50	1-1/2"	2	2-7/16 (61.5)	1-5/16 (49.1)	1-3/4 (44.5)	15/64 (5.8)	0.030 (0.014)
5267-HT	2	53	63	2"	2	2-15/16 (74.2)	2-11/32 (59.4)	2-1/2 (56.6)	15/64 (5.8)	0.064 (0.029)
5268-HT	2-1/2	63	70	2-1/2"	1	3-7/16 (87.4)	2-29/32 (73.9)	-	15/64 (5.8)	0.050 (0.023)
5269-HT	3	78	80	3"	1	4-1/16 (103.6)	3-17/32 (89.9)	-	15/64 (5.8)	0.055 (0.025)
5270-HT	4	103	100	4"	1	5-9/32 (134.4)	4-9/16 (115.6)	-	5/16 (7.9)	0.138 (0.062)

Note: Product must be installed in accordance with applicable national and local electrical codes.
*Not UL Listed