

Continuous light element, with integrated LED, red, 24 V AC/DC, Diameter 50 mm



product brand name	SIRIUS
product designation	Continuous light element
design of the product	including light sources

General technical data	
type of voltage of the operating voltage	AC/DC
operating voltage	
• 1 at DC rated value	24 V
• 1 at AC at 50 Hz rated value	24 V
• 1 at AC at 60 Hz rated value	24 V
relative positive tolerance of the operating voltage	10 %
relative negative tolerance of the operating voltage	-10 %
consumed current maximum	30 mA
reference code according to EN 61346-2	P

Lamp	
product component light source	Yes
type of light source	LED
service life of LED	100 000 h
design of the optical signal	continuous light
light intensity	1.51 cd
light intensity	0.9 ... 2.43 cd

Enclosure	
height	67 mm
width	52 mm
outer diameter of the signal column element	50 mm
material	PC
color	red
fastening method	Bayonet
protection class IP	IP54

Ambient conditions	
ambient temperature during operation	-20 ... +50 °C

Certificates/ approvals		
General Product Approval	EMC	Declaration of Conformity

[Confirmation](#)



other

Further information

Siemens has decided to exit the Russian market (see here).

<https://press.siemens.com/global/en/pressrelease/siemens-wind-down-russian-business>

Siemens is working on the renewal of the current EAC certificates.

Please contact your local Siemens office on the status of validity of the EAC certification if you intend to import or offer to supply these products to an EAC relevant market (other than the sanctioned EAEU member states Russia or Belarus).

Information on the packaging

<https://support.industry.siemens.com/cs/ww/en/view/109813875>

Information- and Downloadcenter (Catalogs, Brochures,...)

<https://www.siemens.com/ic10>

Industry Mall (Online ordering system)

<https://mall.industry.siemens.com/mall/en/en/Catalog/product?mlfb=8WD4220-5AB>

Cax online generator

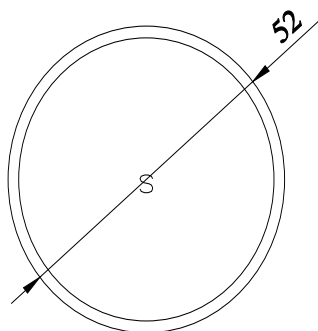
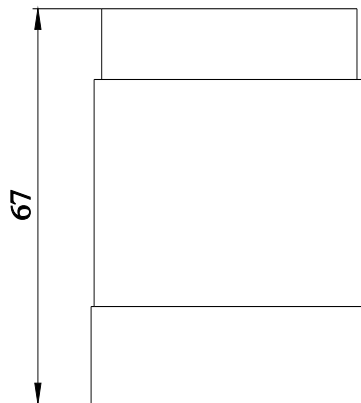
<http://support.automation.siemens.com/WWW/CAXorder/default.aspx?lang=en&mlfb=8WD4220-5AB>

Service&Support (Manuals, Certificates, Characteristics, FAQs,...)

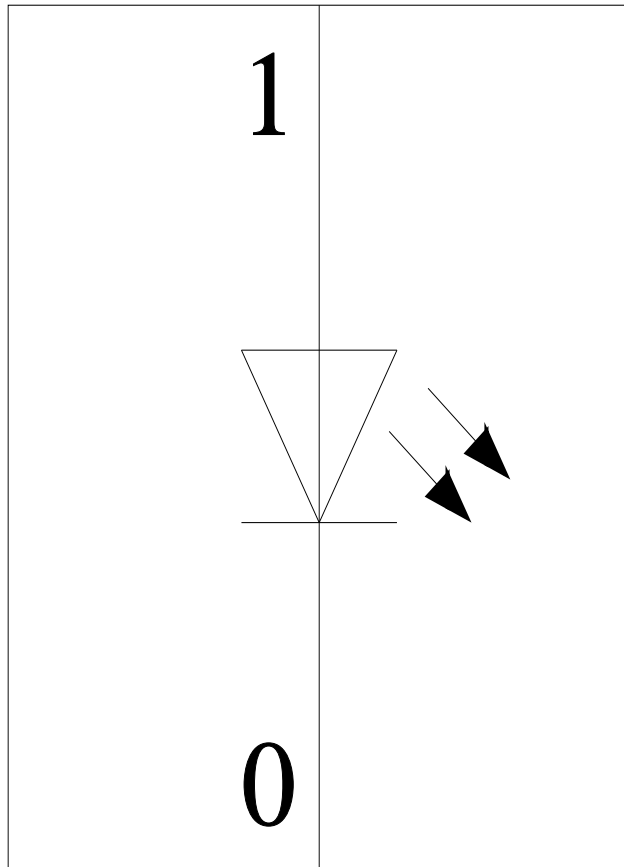
<https://support.industry.siemens.com/cs/ww/en/ps/8WD4220-5AB>

Image database (product images, 2D dimension drawings, 3D models, device circuit diagrams, EPLAN macros, ...)

http://www.automation.siemens.com/bilddb/cax_de.aspx?mlfb=8WD4220-5AB&lang=en



-P



last modified:

2/25/2021 