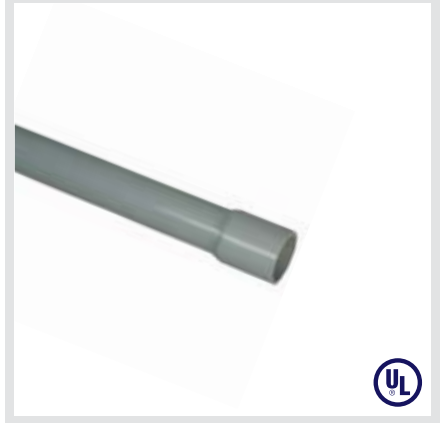


RIGID PVC SCHEDULE 40 CONDUIT

NOMINAL PIPE SIZE (IN)	RBP PART NUMBER	DESCRIPTION	UPC	APPROX. WEIGHT (LB/100FT)
1/2"	RC4000510	RIGID COND .5IN X 10FT GY	772555155008	16.1
3/4"	RC4000710	RIGID COND .75IN X 10FT GY	772555155206	21.5
1"	RC4001010	RIGID COND 1IN X 10FT GY	772555155404	31.9
1-1/4"	RC4001210	RIGID COND 1.25IN X 10FT GY	772555155602	43.8
1-1/2"	RC4001510	RIGID COND 1.5IN X 10FT GY	772555155800	52.3
2"	RC4002010	RIGID COND 2IN X 10FT GY	772555156005	70.3
2-1/2"	RC4002510	RIGID COND 2.5IN X 10FT GY	772555156203	112.0
3"	RC4003010	RIGID COND 3IN X 10FT GY	772555156401	146.7
3-1/2"	RC4003510	RIGID COND 3.5IN X 10FT GY	772555156609	176.4
4"	RC4004010	RIGID COND 4IN X 10FT GY	772555156708	208.9
5"	RC4005010	RIGID COND 5IN X 10FT GY	772555156906	283.4
6"	RC4006010	RIGID COND 6IN X 10FT GY	772555157101	368.0

SCH 40 RIGID CONDUIT
10 FOOT GRAY



NOMINAL PIPE SIZE (IN)	RBP PART NUMBER	DESCRIPTION	UPC	APPROX. WEIGHT (LB/100FT)
1/2"	RC4000520	RIGID COND .5IN X 20FT GY	772555155107	16.1
3/4"	RC4000720	RIGID COND .75IN X 20FT GY	772555155305	21.5
1"	RC4001020	RIGID COND 1IN X 20FT GY	772555155503	31.9
1-1/4"	RC4001220	RIGID COND 1.25IN X 20FT GY	772555155701	43.8
1-1/2"	RC4001520	RIGID COND 1.5IN X 20FT GY	772555155909	52.3
2"	RC4002020	RIGID COND 2IN X 20FT GY	772555156104	70.3
2-1/2"	RC4002520	RIGID COND 2.5IN X 20FT GY	772555156302	112.0
3"	RC4003020	RIGID COND 3IN X 20FT GY	772555156500	146.7
3-1/2"	RC4003520	RIGID COND 3.5IN X 20FT GY	772555156654	176.4
4"	RC4004020	RIGID COND 4IN X 20FT GY	772555156807	208.9
5"	RC4005020	RIGID COND 5IN X 20FT GY	772555157002	283.4
6"	RC4006020	RIGID COND 6IN X 20FT GY	772555157156	368.0

SCH 40 RIGID CONDUIT
20 FOOT GRAY

