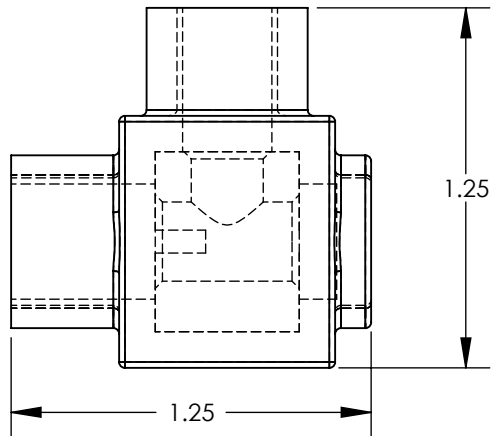
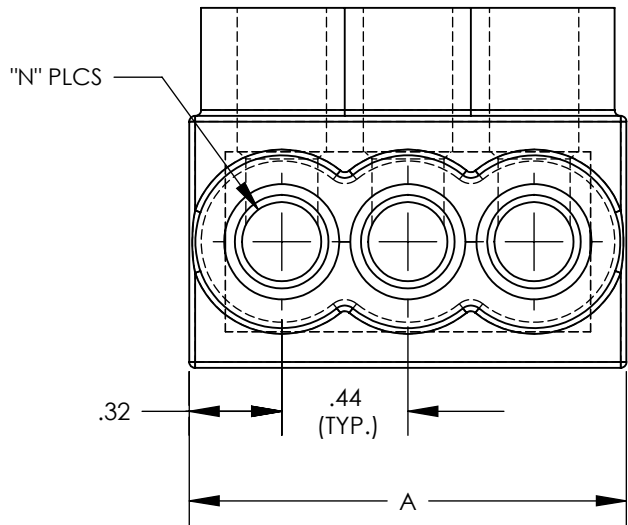
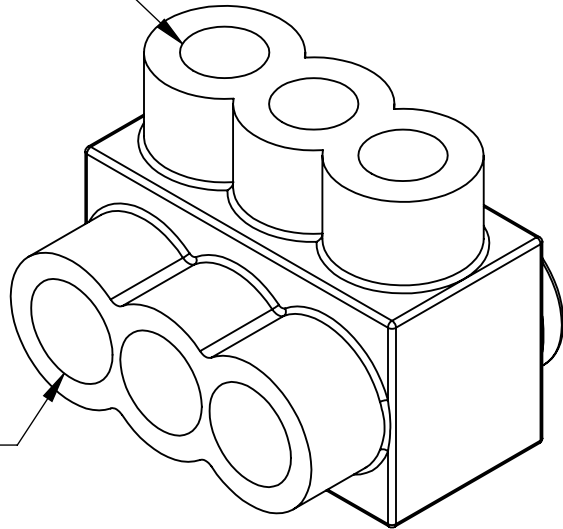


THREE PORT CONNECTOR BLOCK SHOWN WITH PLASTIC CLOSURE PLUGS REMOVED. SEE TABLE FOR DIMENSIONS OF PARTS WITH ADDITIONAL PORTS



CLAMPLING SCREW ACCESS PORT (TYP.)

CONDUCTOR PORT (TYP.)



PANDUIT PART NUMBER	CONDUCTOR RANGE	HEX KEY	SCREW QUANTITY	CAP (SCREW PORT QUANTITY)	CAP (WIRE PORT QUANTITY)	A	L	N	TIGHTENING TORQUE
PCSB4-2S-12Y	#4 - #14 STR #10 - #14 SOL	1/8"	2	2	2	1.23	0.982	2	#10 - #14 = 45 IN-LBS #4 - #8 = 50 IN-LBS
PCSB4-3S-12Y			3	3	3	1.76	1.512	3	
PCSB4-4S-6Y			4	4	4	2.29	2.042	4	
PCSB4-5S-6Y			5	5	5	2.82	2.572	5	
PCSB4-6S-6Y			6	6	6	3.35	3.102	6	
PCSB4-10S-4Y			10	10	10	5.47	5.222	10	
PCSB4-12S-3Y			12	12	12	6.53	6.282	12	
PCSB4-14S-2Y			14	14	14	7.59	7.342	14	




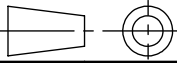
LISTED



CERTIFIED

- NOTES:
- UL486A-UL486B LISTED, DUAL RATED CU9AL FOR ALUMINUM OR COPPER CONDUCTORS. MEETS OR EXCEEDS ANSI C119.4
 - SEE TABLE FOR WIRE RANGE.
 - STRIP LENGTH: .56+.06/-0
 - SEE TABLE FOR TIGHTENING TORQUE SPECIFICATIONS.
 - VOLTAGE RATING: 600 V. MAX. BUILDING WIRE, 1000 V. MAX. IN SIGNS & FIXTURES.
 - TEMPERATURE RATING: 90°C (CU9AL).
 - CONNECTOR BLOCK BODY ARE MADE FROM ALUMINUM. CONDUCTOR PORTS IN CONNECTOR BLOCK ARE PREFILLED WITH AN OXIDE-INHIBITING COMPOUND.
 - CONNECTOR TO INCLUDE ZINC PLATED STEEL CLAMPING SCREWS FOR EACH CONDUCTOR PORT.
 - A

 INSULATION MATERIAL IS CLEAR BLUE PVC.
 - CLAMPING SCREW ACCESS PORTS AND ALL WIRE ENTRY PORTS ARE PROVIDED WITH REMOVABLE PLASTIC CLOSURE PLUGS.
 - ALL DIMENSIONS SHOWN ARE NOMINAL.
 - ONLY ONE CONDUCTOR PER PORT ALLOWED.
 - PACKAGE QTY: -12 = 12 PCS.
-6 = 6 PCS.
-4 = 4 PCS.
-3 = 3 PCS.
-2 = 2 PCS.
 - THIS PART IS RoHS COMPLIANT

							MULTI-TAP INSULATED CONNECTORS PCSB4 SERIES SINGLE SIDED CUSTOMER DRAWING						
							ITEM REVISION NAME N41529BB-C41529/08						
							DATASET FILE NAME C41529 r08.SLDDRW						
08	11/22	BARK	JHNU	MRWA	A. Revised insulation, clear blue PVC was clear PVC	127186	UNLESS OTHERWISE SPECIFIED, DIMENSIONAL TOLERANCES ARE: IN [mm] <div><div>.X ± .XX ± .02</div><div></div></div> <div>XXX ± ANGLES ±</div>				MATERIAL SEE NOTES		
07	6/19	JHNU	TMR	RGB	REVISED WIRE RANGE FORMAT REVISED TIGHTENING TORQUE	048653							
06	12/17	JHNU	JHNU	RGB	REVISED DIM: .32 WAS .35, .44 WAS .53 REVISED A AND L DIM'S FOR ALL PART NUMBERS REVISED NOTE 8: ZINC PLATED STEEL WAS TIN PLATED ALUM.	N41529BB-C41529							
05	2/13	JHNU	JHNU	RGB	REVISED TITLE BLOCK	N41529BB-C41529							
REV	DATE	BY	CHK	APR	DESCRIPTION	ECN	DRAWN BY MS	DATE 8/99	CHK RLS	SCALE NONE	DRAWING NUMBER C41529	SHEET 1 OF 1	SIZE B