



T8

15T8/COR/48-835/MF20/G/120-347V 25/1

Our TLEDs are available in InstantFit (Type A / Type C) or MainsFit (Ballast bypass / Type B) versions. The InstantFit lamps work on a broad variety of ballasts and LED drivers. Only InstantFit has over 15,000 lamp & ballast combinations delivering even light output, energy savings and a long lifetime. Our MainsFit products feature a double-ended design, simplifying installation while a proprietary safety circuit minimizes a shock risk. Lamp sizes range from 2-foot to 8-foot and U-bend with a variety of lumen outputs.

Product data

General information	
Cap-Base	G13 [Medium Bi-Pin Fluorescent]
EU RoHS compliant	Yes
Nominal Lifetime (Nom)	50000 h
Switching Cycle	50000
Tier	CorePro
Light technical	
Color Code	835 [CCT of 3500K]
Beam Angle (Nom)	240 °
Luminous Flux (Nom)	2000 lm
Color Designation	White (WH)
Correlated Color Temperature (Nom)	3500 K
Luminous Efficacy (rated) (Nom)	133.00 lm/W
Color Consistency	<6
Color Rendering Index (Nom)	80
LLMF At End Of Nominal Lifetime (Nom)	70 %
Operating and electrical	
Input Frequency	50 to 60 Hz

Power (Rated) (Nom)	15 W
Lamp Current (Max)	145 mA
Lamp Current (Min)	50 mA
Starting Time (Nom)	0.5 s
Warm Up Time to 60% Light (Nom)	0.5 s
UL Type	TLED_Type B; UL classified double end
Power Factor (Nom)	0.9
Voltage (Nom)	120-347 V
Temperature	
T-Ambient (Max)	45 °C
T-Ambient (Min)	-20 °C
T-Storage (Max)	65 °C
T-Storage (Min)	-40 °C
T-Case Maximum (Nom)	70 °C
Controls and dimming	
Dimmable	Limited

T8

Mechanical and housing

Bulb Finish	Frosted
Bulb Material	Glass
Product Length	1200 mm
Bulb Shape	Tube, double-ended

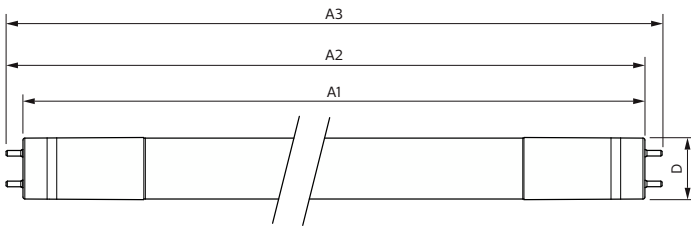
Approval and application

Energy Saving Product	Yes
Approval Marks	RoHS compliance UL certificate DLC compliance

Product data

Order product name	15T8/COR/48-835/MF20/G/120-347V 25/1
EAN/UPC - Product	046677579289
Order code	579284
Numerator - Quantity Per Pack	1
Numerator - Packs per outer box	25
Material Nr. (12NC)	929003523304
Net Weight (Piece)	0.220 kg

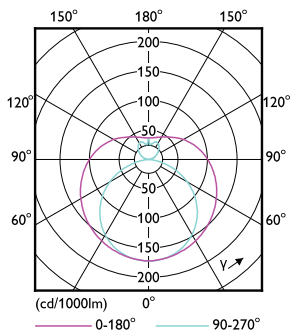
Dimensional drawing



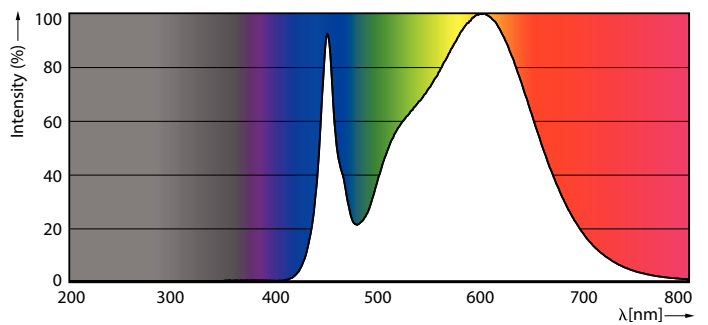
Product	D1	D2	A1	A2	A3
15T8/COR/48-835/ MF20/G/120-347V 25/1	25.7 mm	29 mm	1198.2 mm	1205.3 mm	1212.4 mm

15T8/COR/48-835/MF20/G/120-347V 25/1

Photometric data

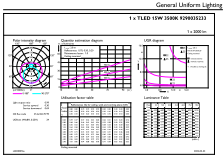


Light Distribution Diagram



Spectral Power Distribution Colour

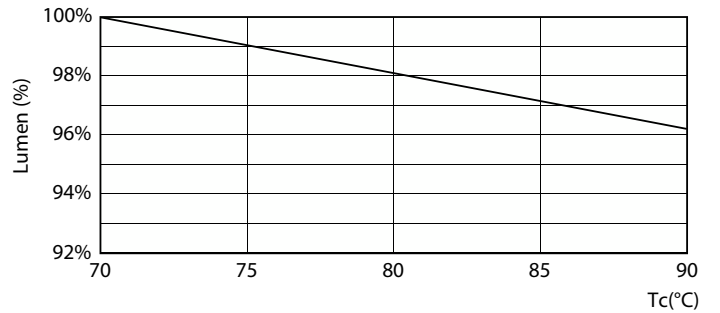
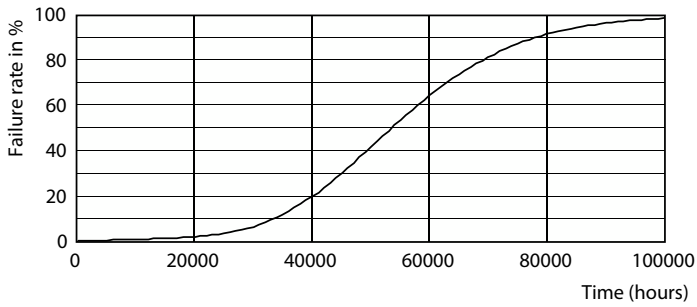
Photometric data



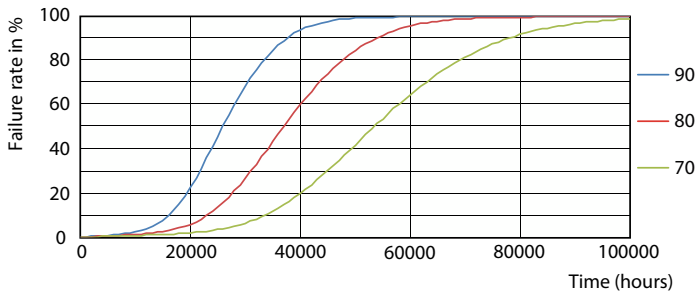
General Uniform Lighting

General uniform lighting

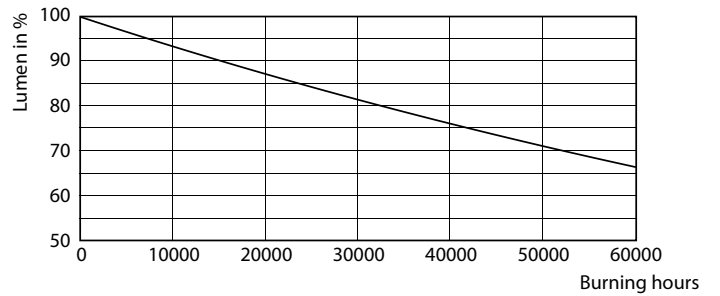
Lifetime



Life Expectancy Diagram



Lumen Maintenance Diagram

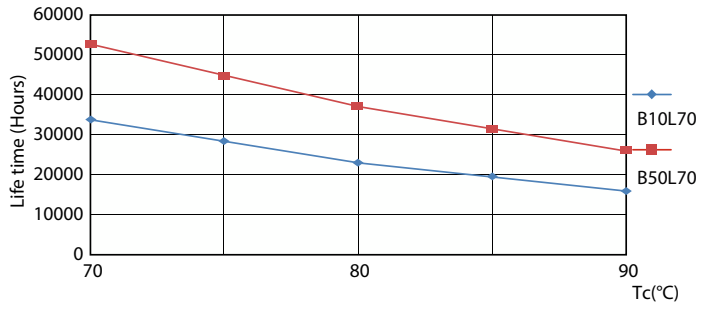


FailureRate

Lumen Maintenance Diagram

T8

Lifetime



LifetimeVsTc

