

T8

15T8/COR/48-840/MF21/G/120-347V 25/1

Our TLEDs are available in InstantFit (Type A / Type C) or MainsFit (Ballast bypass / Type B) versions. The InstantFit lamps work on a broad variety of ballasts and LED drivers. Only InstantFit has over 15,000 lamp & ballast combinations delivering even light output, energy savings and a long lifetime. Our MainsFit products feature a double-ended design, simplifying installation while a proprietary safety circuit minimizes a shock risk. Lamp sizes range from 2-foot to 8-foot and U-bend with a variety of lumen outputs.

Product data

General information	
Cap-Base	G13 [Medium Bi-Pin Fluorescent]
EU RoHS compliant	Yes
Nominal Lifetime (Nom)	50000 h
Switching Cycle	50000
Tier	CorePro
Light technical	
Color Code	841 [CCT of 4100K (841)]
Beam Angle (Nom)	240 °
Luminous Flux (Nom)	2100 lm
Color Designation	Cool White (CW)
Correlated Color Temperature (Nom)	4000 K
Luminous Efficacy (rated) (Nom)	140.00 lm/W
Color Consistency	<6
Color Rendering Index (Nom)	80
LLMF At End Of Nominal Lifetime (Nom)	70 %
Operating and electrical	
Input Frequency	50 to 60 Hz

Power (Rated) (Nom)	15 W
Lamp Current (Max)	145 mA
Lamp Current (Min)	50 mA
Starting Time (Nom)	0.5 s
Warm Up Time to 60% Light (Nom)	0.5 s
UL Type	TLED_Type B; UL classified double end
Power Factor (Nom)	0.9
Voltage (Nom)	120-347 V
Temperature	
T-Ambient (Max)	45 °C
T-Ambient (Min)	-20 °C
T-Storage (Max)	65 °C
T-Storage (Min)	-40 °C
T-Case Maximum (Nom)	70 °C
Controls and dimming	
Dimmable	Limited

T8

Mechanical and housing

Bulb Finish	Frosted
Bulb Material	Glass
Product Length	1200 mm
Bulb Shape	Tube, double-ended

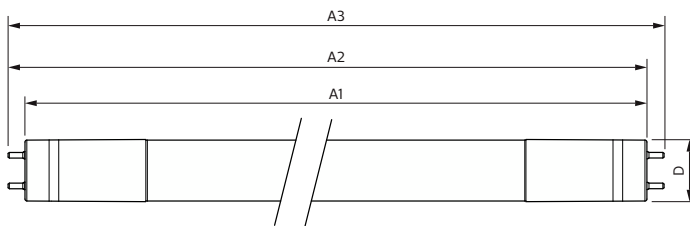
Approval and application

Energy Saving Product	Yes
Approval Marks	RoHS compliance UL certificate DLC compliance

Product data

Order product name	15T8/COR/48-840/MF21/G/120-347V 25/1
EAN/UPC - Product	046677579296
Order code	579292
Numerator - Quantity Per Pack	1
Numerator - Packs per outer box	25
Material Nr. (12NC)	929003523404
Net Weight (Piece)	0.220 kg

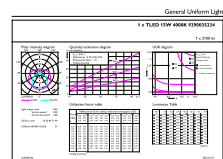
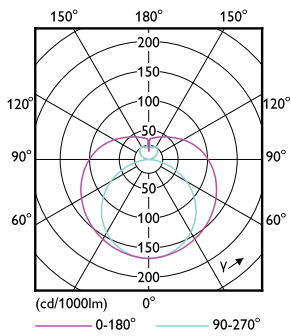
Dimensional drawing



Product	D1	D2	A1	A2	A3
15T8/COR/48-840/ MF21/G/120-347V 25/1	25.7 mm	29 mm	1198.2 mm	1205.3 mm	1212.4 mm

15T8/COR/48-840/MF21/G/120-347V 25/1

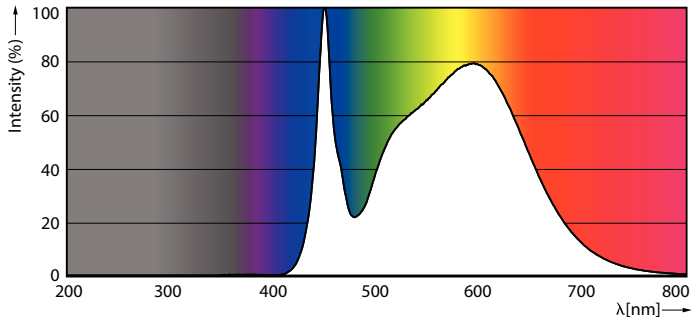
Photometric data



Light Distribution Diagram

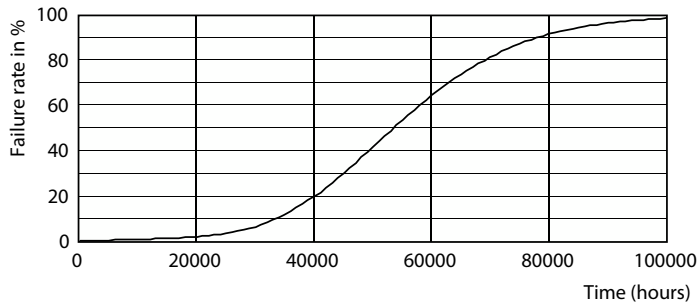
General uniform lighting

Photometric data

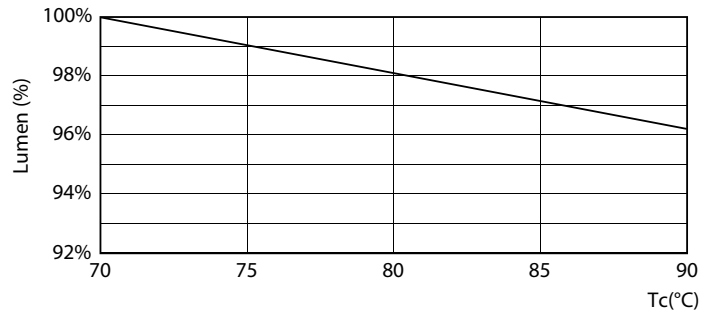


Spectral Power Distribution Colour

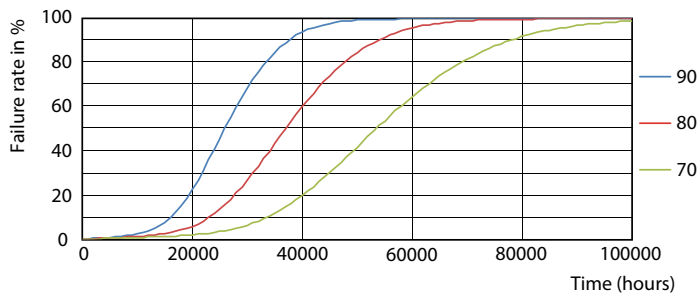
Lifetime



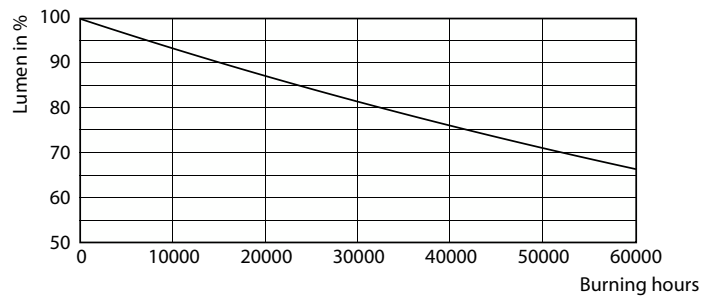
Life Expectancy Diagram



Lumen Maintenance Diagram



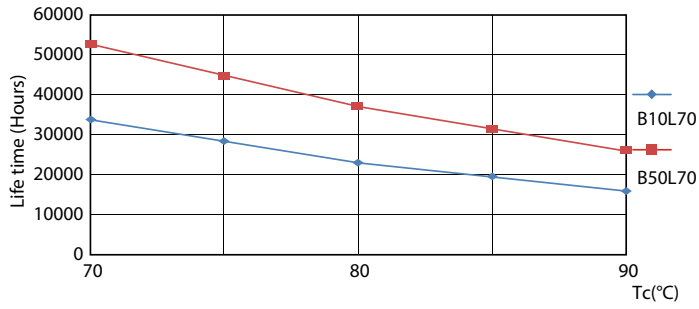
FailureRate



Lumen Maintenance Diagram

T8

Lifetime



LifetimeVsTc

