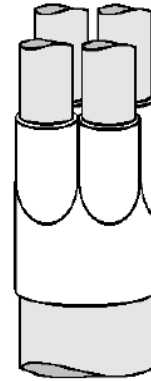


# Heat Shrink Products

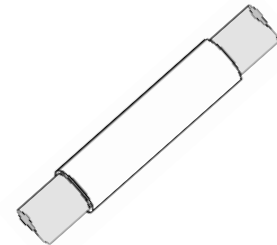
## Breakout Boots

	Body Range (Inches)	Leg Range (Inches)	No. of Legs
ACBR2-1A	.035 - 1.00	0.15 - 0.53	2
ACBR2-2A	1.25 - 1.70	0.30 - 0.75	2
ACBR2-3A	1.65 - 3.00	0.65 - 1.40	2
ACBR3-1A	0.50 - 1.35	0.20 - 0.55	3
ACBR3-2A	0.85 - 2.20	0.35 - 0.90	3
ACBR3-3A	1.10 - 2.90	0.50 - 1.25	3
ACBR3-4A	2.35 - 5.65	1.20 - 2.10	3
ACBR4-1A	0.70 - 1.25	0.15 - 0.45	4
ACBR4-2A	1.00 - 2.10	0.35 - 0.90	4
ACBR4-3A	1.20 - 3.50	0.55 - 1.40	4
ACBR4-4A	2.35 - 6.05	0.90 - 1.50	4



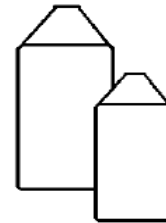
## 48" Long Heavy Wall Heat Shrink with Adhesive

	Range (Inches)
AWCSM12/3-1200S	0.14 - 0.39
AWCSM16/4-1200S	0.18 - 0.55
AWCSM24/6-1200S	0.26 - 0.87
AWCSM34/8-1200S	0.35 - 1.22
AWCSM48/12-1200S	0.51 - 1.73
AWCSM56/16-1200S	0.69 - 1.97
AWCSM70/20-1200S	0.87 - 2.48
AWCSM110/30-1200S	1.30 - 3.94
AWCSM130/35-1200S	1.49 - 4.65



## End Caps

	Range (Inches)
AESC1A	0.15 - 0.30
AESC2A	0.30 - 0.70
AESC3A	0.65 - 1.25
AESC4A	1.05 - 1.95
AESC5A	1.30 - 2.65
AESC6A	1.85 - 3.70
AESC7A	2.95 - 4.50



## Teck Cable Splice Kits - Aluminum/Copper

	KV / and Number of Conductors	Wire Range (inches)
TS14-4-4	1KV / 3 or 4 Cond.	#14 - #4
TS2-3/0-4	1KV / 3 or 4 Cond.	#2 - 3/0
TS4/0-400-4	1KV / 3 or 4 Cond.	4/0 - 400 Mcm
TS500-1000-4	1KV / 3 or 4 Cond.	500 - 1000 Mcm
TS5-3/0-400-3	5KV / 3 Cond.	3/0 - 400 Mcm
TS5-3-2/0-3	5KV / 3 Cond.	#3 - 2/0
TS5-500-1000-3	5KV / 3 Cond.	500 - 1000 Mcm

