

FL04B Flood / Area Light

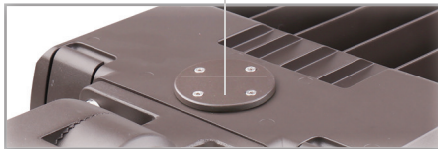
450W | 5000K | 120-347V



TRUE UNIVERSAL POWER INPUT FROM 120-347V!

A versatile, clean, and modern appearance that brings a pleasing aesthetic to any project

Removable Access Plate
for easy field installation of
twist lock photocell receptacle



**Rugged Die Cast
Aluminum Housing**
(Bronze)



Pressure Relief Respirator
for expansion/contraction

Complete with Trunnion
Interchangeable mounting
options sold separately

**Quick-Release,
Hinged Access Cover**
for control compartment

Accessories (Ordered Separately):
Yoke Mount, Slip Fit, Pole Mount, Multi Mount, Motion Sensor
Remote, Motion Sensor, Photocell and Receptacle, Shield



FL04-YK-HG



FL04-SF



FL04-PM



FL04-MM



HB01R



HB01DMS-B

TECHNICAL DATA



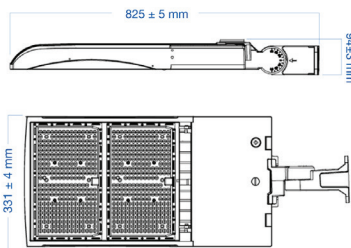
LIGHT SPECIFICATIONS

Lumens	62,776 lm
Efficacy	139 lm/W
CCT	5000K
CRI	> 70
L70 Life	> 54,000 hrs
Dimmable	0-10V
Warranty	10-year

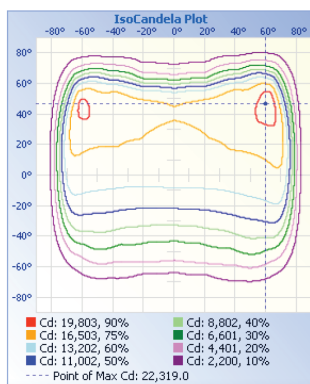
APPROVALS AND LISTINGS

cUL	E482965
DLC Premium	PLQOA0AZMC41

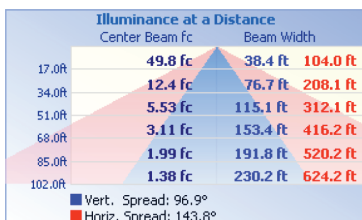
DIMENSIONS (SHOWN WITH TRUNNION MOUNT)



ISOCANDELA



ILLUMINANCE AT A DISTANCE



ELECTRICAL

Wattage	450W
Voltage	120-347V
Power Factor	> 0.9
THD	< 15%
Operating Temp	-40 to 50°C

CONSTRUCTION

Housing	Die-Cast Aluminum
Cover	Polycarbonate
Finish	Bronze
IP Rating	IP65
EPA	2.31 ft²
Net Weight	9.32 kg
Gross Weight	10.32 kg
Carton Qty	1
Carton Dimensions	915 x 380 x 155 mm

ACCESSORIES (SOLD SEPARATELY)

Slip Fit	FL04-SF
Pole Mount	FL04-PM
Multi Mount	FL04-MM
Yoke Mount	FL04-YK-HG
Motion Sensor	HB01DMS-B
Motion Sensor Remote	HB01R
Photocell and Receptacle for 120-277V sites	JL-200 and JL-205LV
Photocell and Receptacle for 277-480V sites	JL-200 and JL-207E
Shield	FL04B-SHIELD-LG