



LED module, green, 24 V DC

General technical data		
display version LED	Yes	
protection class IP	IP00	
design of the switching function positively driven	No	
reference code according to IEC 81346-2	P	
Substance Prohibitance (Date)	05/01/2012	
Control circuit/ Control		
control supply voltage at DC		
• rated value	24 V	
product component plug-in socket	No	
Auxiliary circuit		
number of NC contacts for auxiliary contacts	0	
number of NO contacts for auxiliary contacts	0	
number of CO contacts for auxiliary contacts	0	
Main circuit		
type of voltage	DC	
Display		
display version as status display by LED	LED green	
Connections/ Terminals		
product function removable terminal	No	
Installation/ mounting/ dimensions		
mounting position	any	
height	10.5 mm	
width	11.4 mm	
depth	32 mm	
Ambient conditions		
ambient temperature		
• during storage	-25 ... +70 °C	
• during transport	-25 ... +70 °C	
Certificates/ approvals		
General Product Approval	Declaration of Conformity	other

[Confirmation](#)



[Confirmation](#)

Further information

Information- and Downloadcenter (Catalogs, Brochures,...)

<https://www.siemens.com/ic10>

Industry Mall (Online ordering system)

<https://mall.industry.siemens.com/mall/en/en/Catalog/product?mlfb=LZS:PTMG0024>

Cax online generator

<http://support.automation.siemens.com/WW/CAXorder/default.aspx?lang=en&mlfb=LZS:PTMG0024>

Service&Support (Manuals, Certificates, Characteristics, FAQs,...)

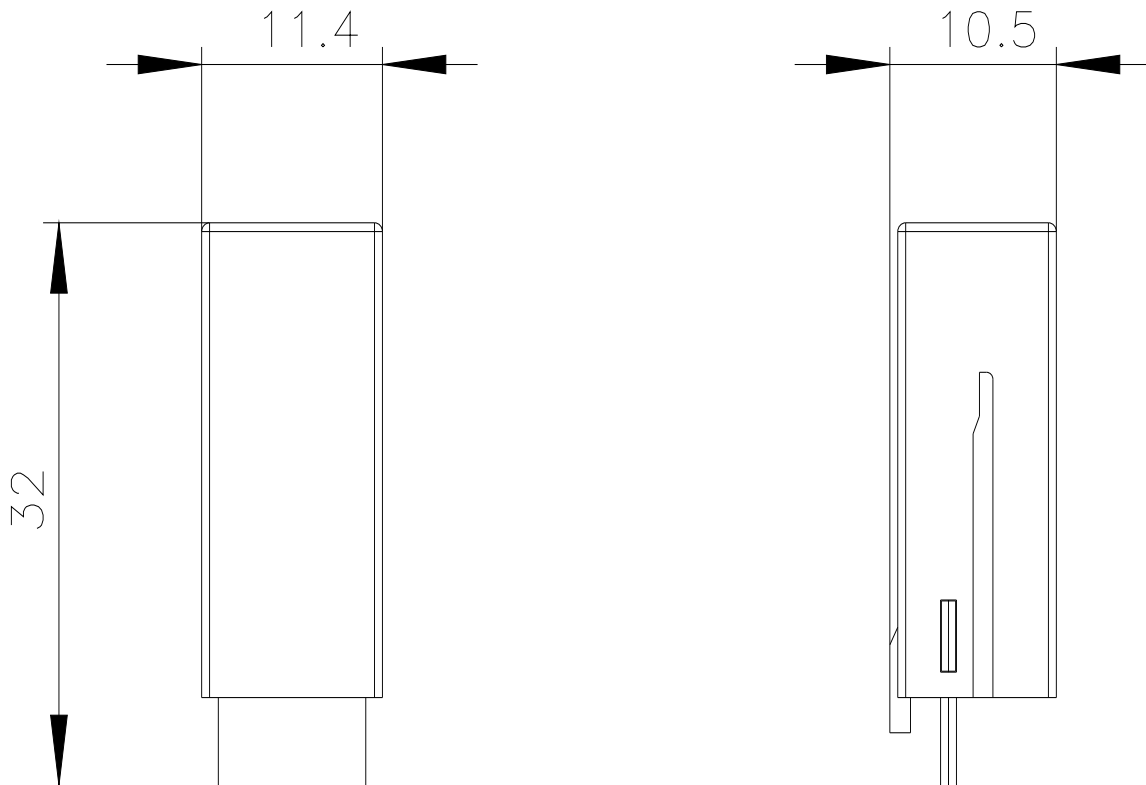
<https://support.industry.siemens.com/cs/ww/en/ps/LZS:PTMG0024>

Image database (product images, 2D dimension drawings, 3D models, device circuit diagrams, EPLAN macros, ...)

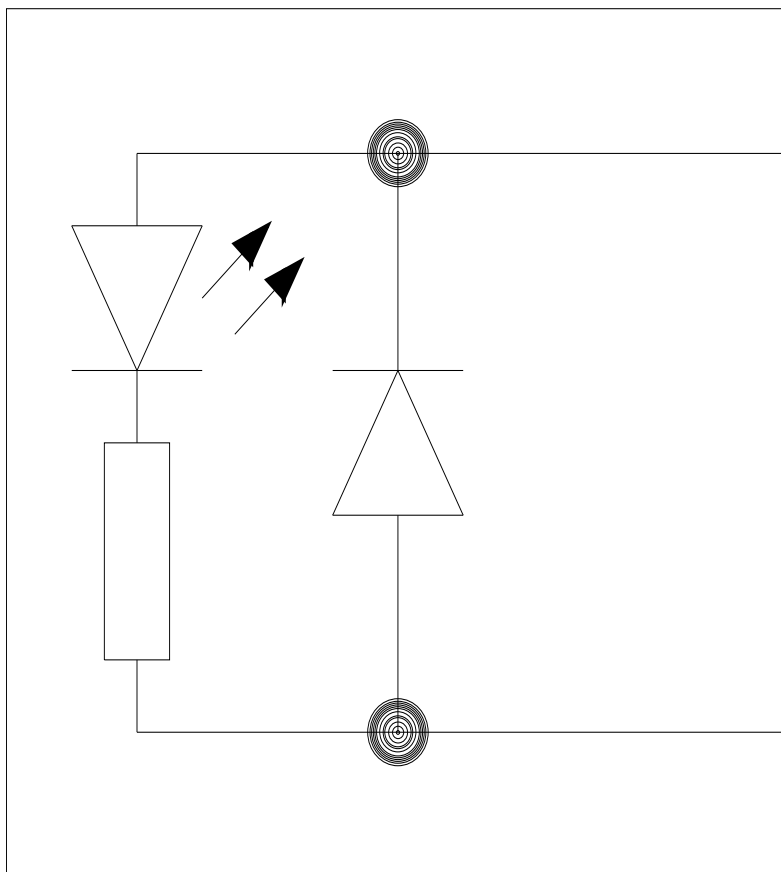
http://www.automation.siemens.com/bilddb/cax_de.aspx?mlfb=LZS:PTMG0024&lang=en

Characteristic: Derating

<https://support.industry.siemens.com/cs/ww/en/ps/LZS:PTMG0024/manual>



-P



last modified:

12/23/2020 