

ITEM NO.	CAT. NO.	COMMERCIAL CABLE SIZE	FIG. NO.	C ±.03	D ±.03	H NOM.	K DIA +.04 -.01	L MAX	N ±.03	T ±.02	W ±.03	RECOMMENDED TIGHTENING TORQUE IN-LB (N-M)
387135	KPA4C	#4 STR(.231)-#14SOL(.064)	1	.50 [13]	.56 [14]	.93 [24]	.28 [7]	1.18 [30]	.29 [7]	.06 [7]	.42 [11]	35 [4.0]
30020830	KPA25GI	1/0 STR(.373)-# 4STR(.231)	2	.62 [16]	.75 [19]	1.0 [25]	.28 [7]	1.50 [38]	.37 [9]	.09 [2]	.60 [15]	35 [4.0]

REV	DATE	DESCRIPTION	ECO	BY	C'HK.
D	2020-01-06 01:00:00 EDT	UPDATED AS PER MARKUP	52766	SS	WP

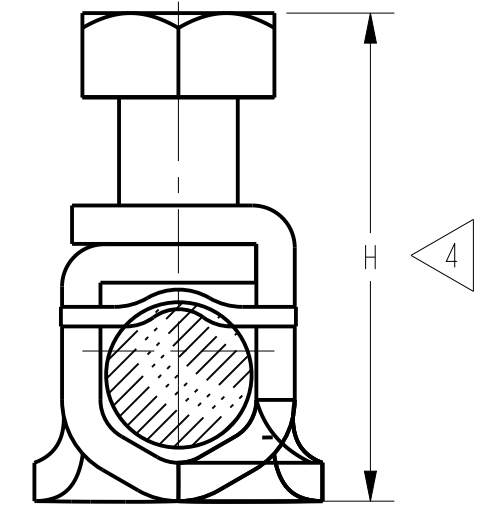
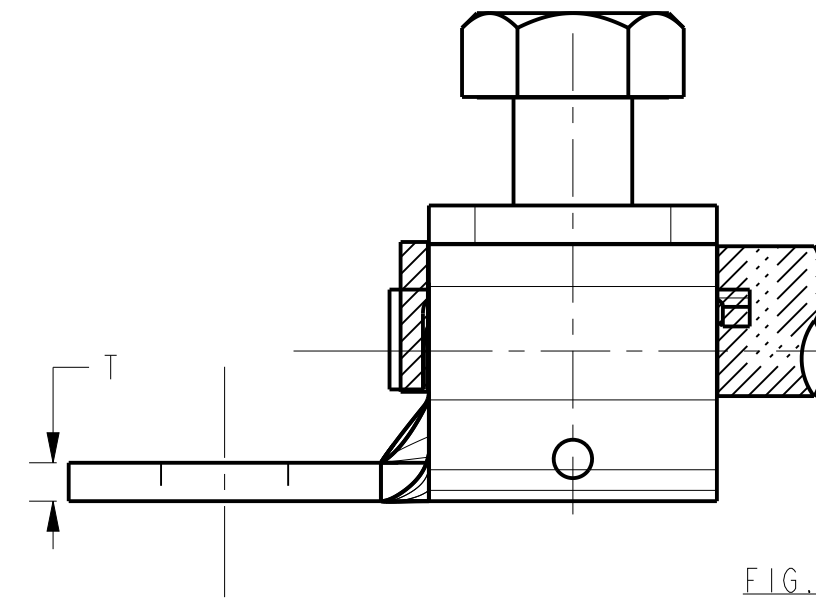
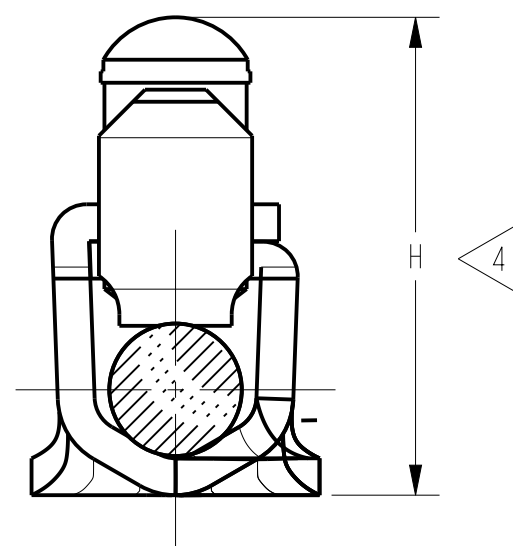
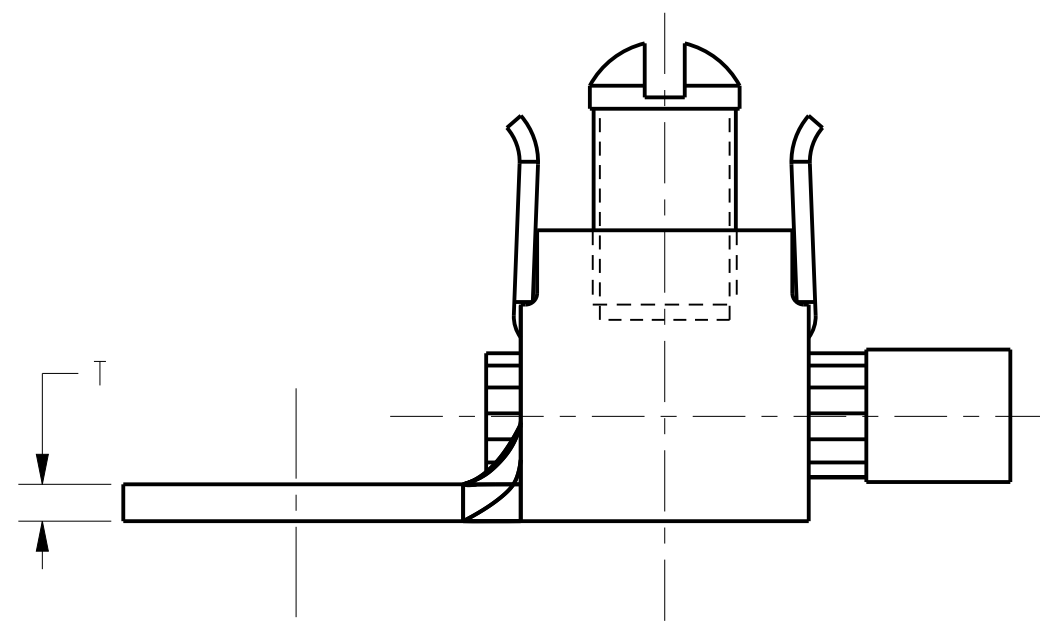
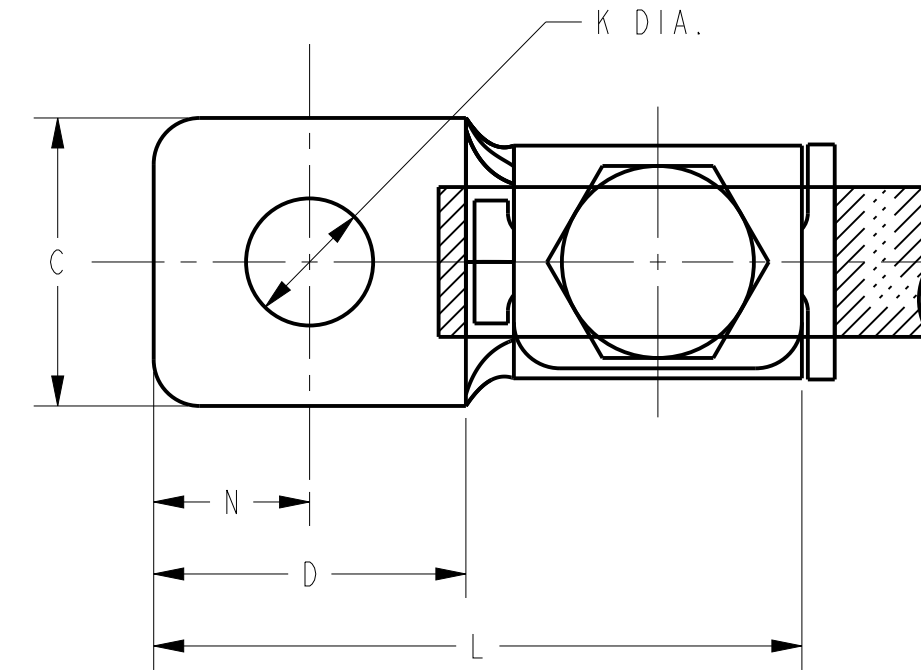
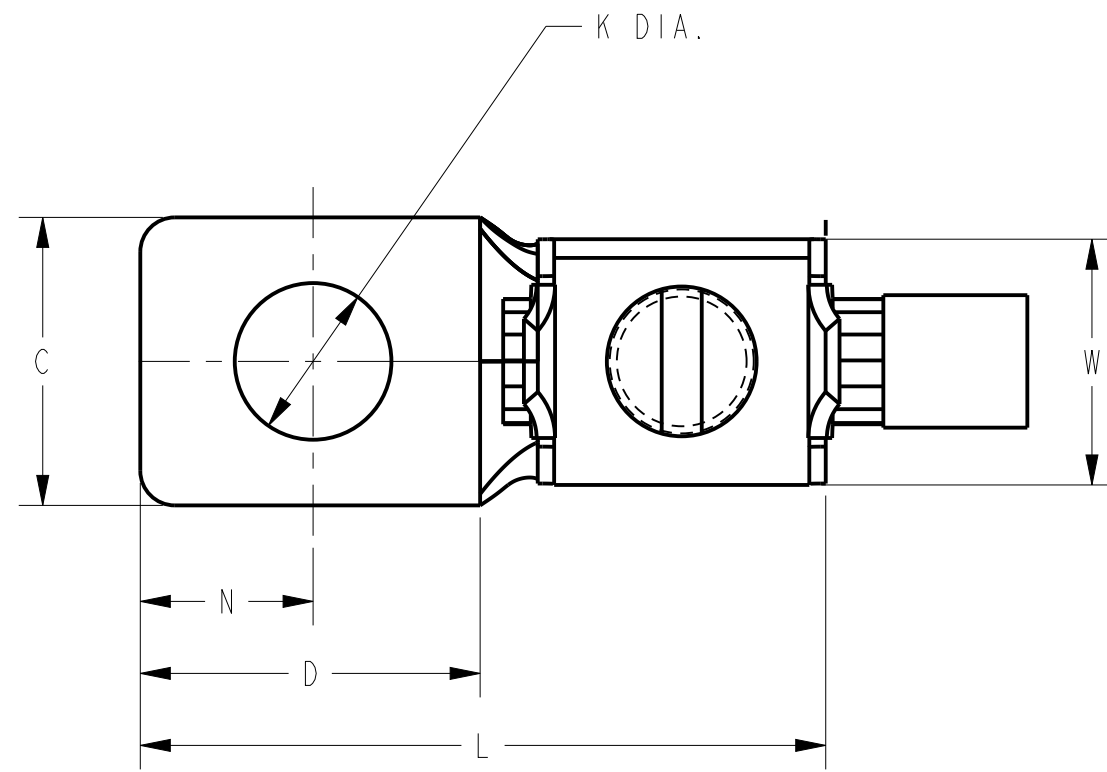


FIG. 1

FIG. 2

NOTES:

- MATERIAL: COPPER.
- FINISH: TIN PLATED.
- DIMENSIONS IN BRACKET [ ] DENOTES METRIC UNITS [SI UNITS] AND ARE ROUNDED TO THE NEAREST WHOLE NUMBER UNLESS OTHERWISE SPECIFIED THESE UNITS SHALL BE USED FOR REFERENCE ONLY.
- WITH MAX. CABLE IN PLACE UNDER COMPRESSION.
- THIS DRAWINGS TO BE INTERPRETED PER ASME Y14.5M-2009.
- FOR USE WITH AF-1 100 AMP. BREAKER FRAME.

REFERENCE:

G.E. CO. PHILADELPHIA WORKS  
SKETCH LU-060844-1

TO ORDER BURNDY® PRODUCTS CALL UNITED STATES: 1-800-346-4175 (LONDONDERRY, NH) CANADA: 1-800-361-6975 (QUEBEC) 1-800-387-6487 (ALL OTHER PROVINCES) FOR PRODUCT INFO: <a href="http://www.burndy.com">http://www.burndy.com</a>		SCRULUG™	
		ITEM NO: 30020830	CAT. NO: KPA-- (TABLE)
DRAWN BY: F.M 6-19-44 CHECKER: WCB 6-20-44 DSN APPVL: T.REYNOLDS 04/10/2018 MFG APPVL: P.MARTEL 04/10/2018 QA APPVL: C.LINDQUIST 04/11/2018 MKT APPVL: M.BAILLY 04/12/2018 PROD FAM: CM&R Mechanical PROJECT #: -- DOCUMENT TYPE: Sales REL LEVEL: Released		SCALE: 2:1 DRAWING NO: SA012435-01 SHEET 1 OF 1	REV: D

REV: PE0200