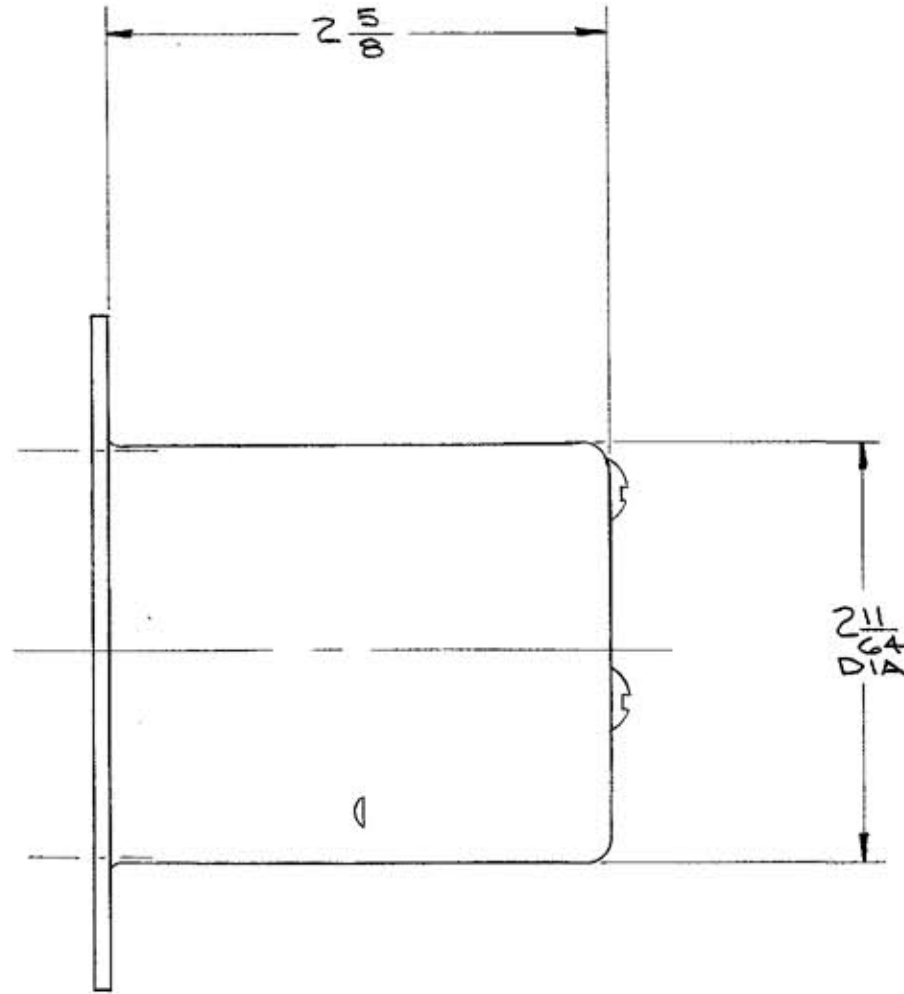
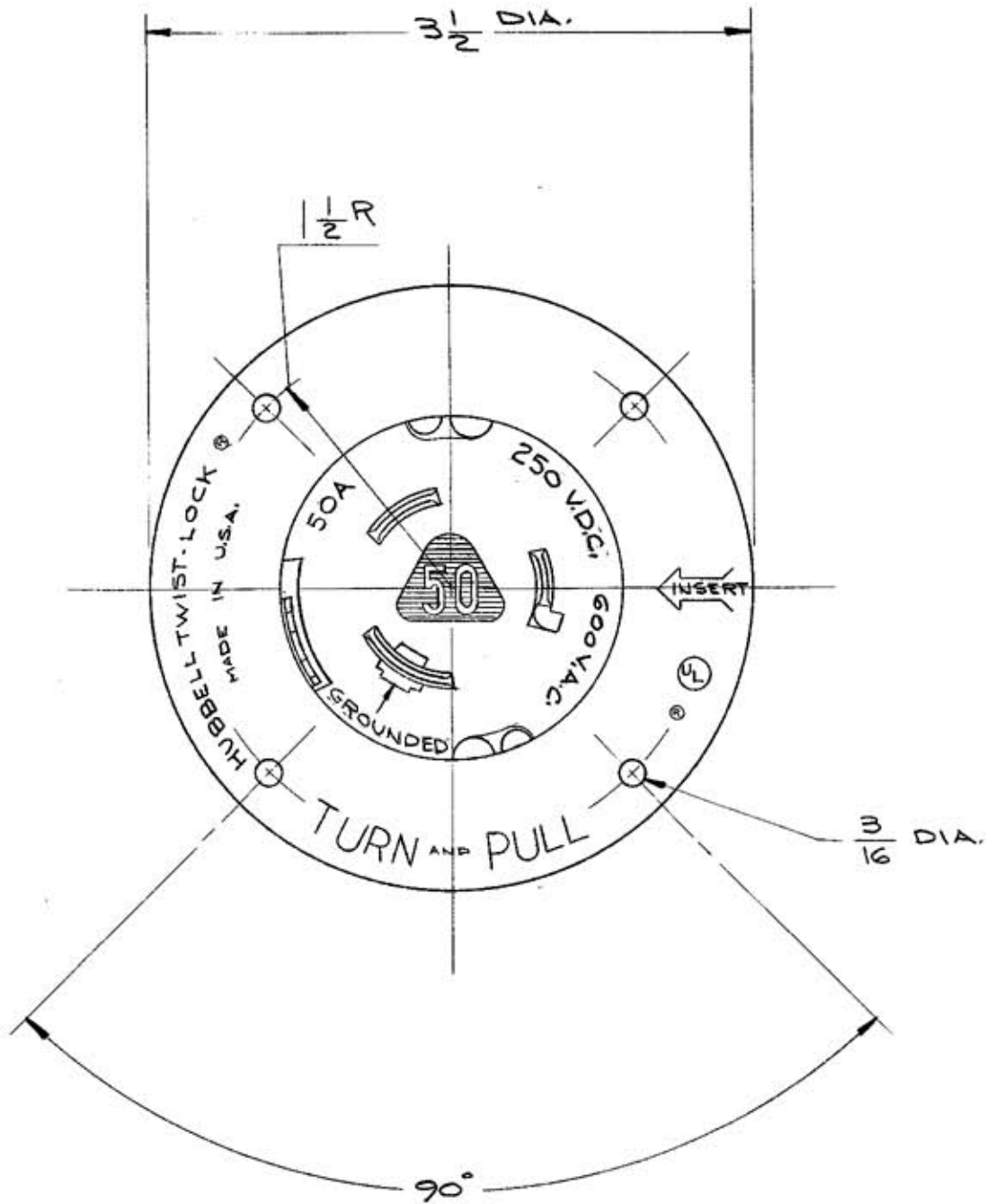


M-4089



NOTE:
GR. TERM. IS CONNECTED TO
OUTER COVER BY A BRONZE
SPRING.

LIST OF PARTS

DESCRIPTION	MATERIAL	FINISH
FLANGED CASING	.062 STEEL	ALUM. SPRAY
INSULATORS	PHENOLIC	
CONTACT BLADES	.100 BRASS	1 COPPER
3-TERMINALS	.070 COPPER	2 BRASS
3-ROUND HD. SCR.	STEEL	ZINC PL.
3-PRESSURE SCR.	STEEL	CADMIUM
GR. SHUNT	.025 BRONZE	

DIMENSION SHEET FOR CAT. NO. 3777

REPAIRABLE NON-REPAIRABLE

SYM	REVISIONS	APP	DATE

1 CASTING THICKNESS WAS .078 7-7-69 ASM

B
M-4089

TITLE 50A 250V.D.C., 50A 600V.A.C.
2 POLE, 3 WIRE, NON-INTERCHANGEABLE
TWIST-LOCK, FLANGED INLET.

TOLERANCES UNLESS OTHERWISE SPECIFIED
FRACTIONS ± 1/64
DECIMALS ± .005
ANGLES ± 2°

HARVEY HUBBELL, INC.
BRIDGEPORT, CONN.

DR. BY P.H.E. APP. BY A.S.
TR. BY SCALE 1=1
CHK'D. BY J.C.H. DATE 7-6-64