



KILLARK®

INSTALLATION, OPERATION & MAINTENANCE DATA SHEET

EXB---N34 CN SERIES EMPTY HOUSING TYPE

PTB License No. 02 ATEX 1073 U

Physikalisch-Technische Bundesanstalt

Braunschweig und Berlin

0102  II 2 G



Method of Protection Code EEx d IIA & IIB T6 or T5

Method of Protection Code Ex d IIA, IIB & IIB + H2

T6 or T5

For use in Zone 1 Groups, IIA IIB & IIB + H2 T6 or T5,
IP56 hazardous locations



EXB---N34 CN SERIES EMPTY HOUSING TYPE PTB

CAUTION:

Before installing, make sure you are compliant with area classifications, failure to do so may result in bodily injury, death and property damage. Do not attempt installation until you are familiar with the following procedures. All installation must comply with the applicable Electrical Code.

Make sure that the circuit is de-energized before starting installation or maintenance.

Verify that the installation is grounded. Failure to ground will create electrical shock hazards, which can cause serious injury and or death.

IMPORTANT:

All machining, drilling and tapping on this enclosure must be provided by killark. the ptb certifications are voided if field machining is done. the end supplier must bear the burden of proof for the final evaluation, testing and documentation.

Technical information, advice and recommendations contained in these documents is based upon information that Killark believes to be reliable. All the information and advice contained in these documents is intended for use only by persons having been trained and possessing the requisite skill and know-how and to be used by such persons only at their own discretion and risk. The nature of these instructions is informative only and does not cover all of the details, variations or combinations in which this equipment may be used, its storage, delivery, installation, check out, safe operation and maintenance. Since conditions of use of the product are outside of the care, custody and control of Killark, the purchaser should determine the suitability of the product for his intended use, and assumes all risk and liability whatsoever in connection therewith.

KILLARK®



3940 Dr. Martin Luther King Drive
St. Louis, MO 63113

P/N 00912207 FORM NO. K1190 R2/04 ECO-2-20-04

Page 1 of 3

1. APPLICABLE STANDARDS

EN 50 014:1997 + A1...A2 (VDE 0170/0171 Part 1/2.87) General Requirements
 EN 50 018:2000 (VDE 0170/0171 Part 5/1.87) Flameproof Enclosures “d”
 EN 60529
 IEC 60079-1 Ed. 4.0

2. ELECTRICAL DATA

Rated Voltage: Up to 690 Volts.
 Conductor Size: 4/0 AWG or 120mm² Maximum.

3. CONDUIT FITTINGS

Conduit seals and fittings must be certified “EEx d” components per DIN EN 50 018, section 13.2, whose design and installation comply with American and British standards. Sealing fittings must be installed within 18” of this enclosure.

4. CABLE FITTINGS

Cable fittings must be certified “EEx d” components per DIN EN 50 018 or Section 13.1. For lines which are not permanently installed, only cable fittings appropriate for this purpose can be used. They are to be protected from loosening and locked against rotation, i.e. clips, cemented, etc., .., per EN 50 018, section 12.

5. UNUSED OPENINGS

All unused openings must be closed with a Killark CUP, CUPX, PLUG, GO-8177 series close-up plug or an “EEx d” certified close-up plug or sealing plug per EN 50 018, section 12.5.

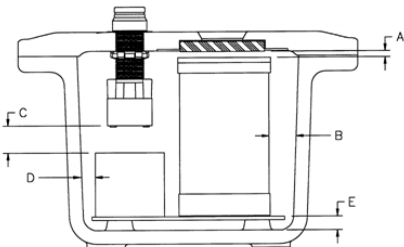
6. PILOT DEVICES AND OPERATING HANDLE ASSEMBLIES

ONLY Killark’s “G” series pilot devices and “EXH / B7” series operating handles may be factory or field assembled in this enclosure. The installation of pilot devices, operating handles and internal components must comply to the spacing requirements in FIGURE 1. The Killark factory must do machining for operators and handles.

7. FUSES:

If fuses are installed, an external caution label must be provided with the following information: “Change fuse in the de-energized state only. Use *** Volt ** Amp (class) Fuse.”

FIGURE.1: “EXB” ENCLOSURE/ DEVICE SPACING



“EXB” ENCLOSURE / DEVICE SPACINGS

A	1/16" (1.58mm) MIN.
B	1/2" (12.7mm) MIN.
C	1" (25.4mm) MIN.
D	1/2" (12.7mm) MIN.
E	1/2" (12.7mm) REF.

KILLARK® 

Victor
Lighting

Vantage
Technology

RIKPOWER

HAWKE
International

3940 Dr. Martin Luther King Drive
 St. Louis, MO 63113

P/N 00912207 FORM NO. K1190 R2/04 ECO-2-20-04

Page 2 of 3

8. DESCRIPTION OF MATERIAL

Boxes and covers are made of cast aluminum alloy, rectangular shape. Cover fixed with bolts. Enclosures may be provided with windows, operating rods & pilot lights. These accessories shall be non-detachable by use of a locknut, a locking screw or glue in the threaded joint.

9. BATTERIES

Operation of batteries and storage of batteries in this enclosure must be such that short circuits, overload and overcharging are avoided. Components that are fed by the internal voltage source are to be covered by a safe-to-touch method. An external caution label must be provided with the following marking: "Attention: Internal Voltage Source."

10. HEAT PRODUCING COMPONENTS

If components are installed inside the enclosure that have a surface temperature above the temperature class, an external caution label must be provided with the following marking: "Attention: Hot surfaces in the interior. Open housing only after a waiting time of 15 minutes."

11. CAPACITORS

When capacitors are installed in the enclosure, the energy for group IIB is limited to 0.06mJ (VDE 0165, section 6.1.5) by the appropriate protective elements.

MAXIMUM WATTAGE CHART

Power loss when used in temperature class T6 and T5 are as follows;

Enclosure	T6 Max Watts	T5 Max Watts	Enclosure	T6 Max Watts	T5 Max Watts
EXB-664	95	135	EXB-14146	280	385
EXB-886	130	185	EXB-14148	315	465
EXB-8104	130	185	EXB-16166	315	460
EXB-8106	155	225	EXB-16168	340	500
EXB-8126	185	270	EXB-16248	495	735
EXB-8128	205	310	EXB-162410	530	785
EXB-10106	195	280	EXB-18186	400	585
EXB-10108	210	310	EXB-18188	440	650
EXB-10146	235	335	EXB-18248	495	740
EXB-10148	255	380	EXB-182410	535	790
EXB-12126	205	310	EXB-18368	685	1020
EXB-12128	240	350	EXB-183610	725	1085
EXB-12186	280	385	EXB-203611	870	1300
EXB-12188	315	465	EXB-24248	610	910
EXB-12246	350	500	EXB-242410	650	975
EXB-12248	385	565	EXB-24308	650	975
EXB-122412	495	740	EXB-24368	850	1265
EXB-12368	550	795	EXB-243610	900	1350
EXB-123610	590	875			

