

# Switched Disconnects and Enclosures

## 600V AC Manual Toggle Controllers/Disconnects

For use in almost any industrial environment. Ideal component switch for motor control and as a disconnect. Toggle controllers can be built into equipment and enclosures for either box or panel-mount installation.

| Amp  | Poles | ToggleType | Wire      | HP Rating     |               |               |               | Catalog Number    |
|--|-------|------------|-----------|---------------|---------------|---------------|---------------|-------------------|
|  |       |            |           | 120V AC<br>1Ø | 240V AC<br>3Ø | 480V AC<br>3Ø | 600V AC<br>3Ø |                   |
| 30   | 2     | Standard   | Back/Side | 2             | 5             | 10            | 15            | <b>HBL7832</b>    |
|  | 2     | Short      | Back/Side | 2             | 5             | 10            | 15            | <b>HBL7832S</b>   |
|  | 3     | Standard   | Back/Side | 3             | 7.5           | 15            | 20            | <b>HBL7810</b>    |
|  | 3     | Short      | Back/Side | 3             | 7.5           | 15            | 20            | <b>HBL7810S</b>   |
| 40   | 2     | Standard   | Side      | 2             | 5             | 10            | 15            | <b>HBL7842D</b>   |
|  | 3     | Standard   | Side      | 3             | 7.5           | 15            | 20            | <b>HBL7843D</b>   |
| 50   | 2     | Standard   | Side      | 2             | 5             | 10            | 15            | <b>HBL7852D</b>   |
|  | 3     | Standard   | Side      | 3             | 7.5           | 15            | 25            | <b>HBL7853D</b>   |
| 60   | 2     | Standard   | Back      | —             | 10            | 15            | 20            | <b>HBL7862D</b>   |
|  | 3     | Standard   | Back      | —             | 10            | 25            | 30            | <b>HBL7863D</b>   |
|  | 2     | Standard   | Front     | —             | 10            | 15            | 20            | <b>HBL7862FWD</b> |
|  | 3     | Standard   | Front     | —             | 10            | 25            | 30            | <b>HBL7863FWD</b> |
| 85   | 2     | Standard   | Back      | —             | 10            | 15            | 20            | <b>HBL7882D</b>   |
|  | 3     | Standard   | Back      | —             | 10            | 25            | 40            | <b>HBL7883D</b>   |
| Optional Side Guard, for close wall applications and finger safe environments. |       |            |           |               |               |               |               | <b>HBLFG30*</b>   |

Note: \*For 30A, 40A and 50A controllers.



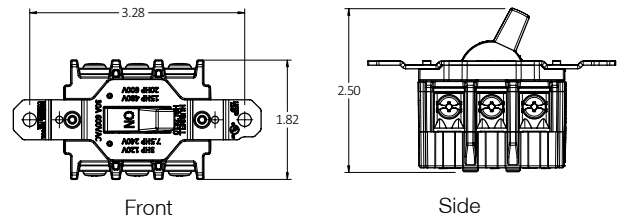
## Specifications

| Electrical Performance |  |                                     |
|------------------------|--|-------------------------------------|
| Dielectric Voltage     | Min. 2,200V AC minimum for 1 minute    |                                     |
| Electrical Life        | Min. 6,000 Cycles at rated switch load |                                     |
| Max. Working Voltage   | 600V AC RMS                            |                                     |
|                        | Switches                               | 10,000 RMS                          |
| Short Circuit          | 30A & 40A                              | 60A max. when protected by J fuses  |
| Withstand Rating       | 50A                                    | 50A max. when protected by J fuses  |
| as Motor Disconnect    | 60A & 85A                              | 80A max. when protected by J fuses  |
| Short Circuit          | 30A                                    | 60A max when protected by RK5 fuses |
| Withstand Rating       |  |                                     |
| as Motor Controller    | 40A – 85A                              | 125A max. RK5 fuses                 |
| Mechanical             |  |                                     |
| Mechanical Life        | Min. 10,000 minimum cycles             |                                     |
|                        | Switch Rating                          | AWG Max.                            |
| Terminal               | 30A                                    | #10                                 |
| Accommodations         | 40A & 50A                              | #8**                                |
|                        | 60A & 85A                              | #4                                  |
| Wire Type              | Solid and stranded copper wire only.   |                                     |
| Terminal Torque        | 30A – 50A                              | 20 inch pounds                      |
| Switch Rating          | 60A – 85A                              | 25 inch pounds                      |
| Environmental          |  |                                     |
| Flammability           | UL94HB/VO                              |                                     |
| Operating Temp.        | Max. 75°C                              |                                     |
|                        | Min. -40°C continuous without impact   |                                     |
| Listings               |  |                                     |
| UL 508                 | Industrial Control File #E70402        |                                     |
| CSA-C22.2 No.14        | LR-46186                               |                                     |

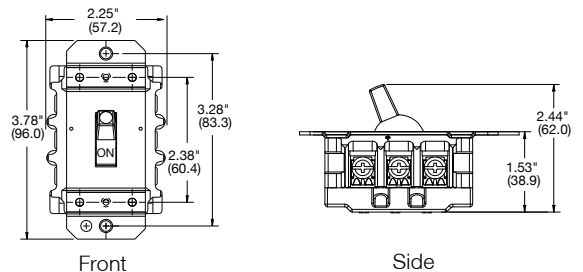
Note: \*\*Use listed certified ring terminal.

## Dimensions

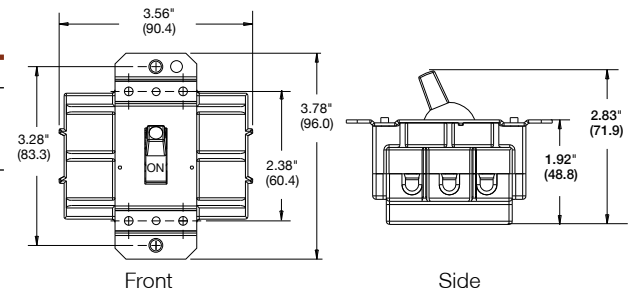
### 30 Amp Standard Toggles



### 40 and 50 Amp Standard Toggles



### 60 and 85 Amp Standard Toggles



Dimensions in Inches (mm)