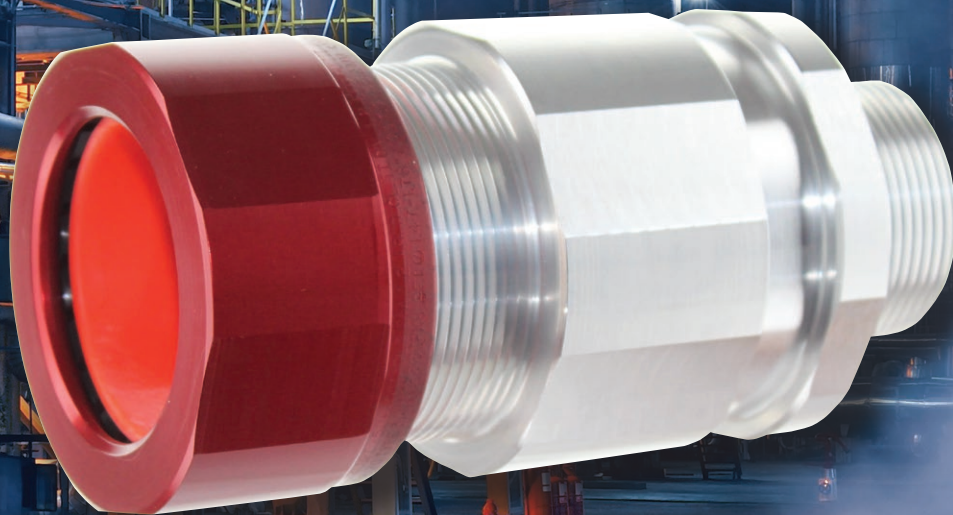


KILLARK®

MC2X Series

The New Solution to Barrier Cable Glands

for Harsh and Hazardous Environments



www.hubbell-killark.com



Harsh & Hazardous

Red anodized back nut
to indicate explosion
proof rated

Unique nylon clamp
with silicone grommet
for better clenching of
the cable

Spring grounding
style for
reusability

Patent pending disc
brush barrier dam for
new pour-in resin

Aluminum potting
chamber for barrier
seal

NPT threads for flame
propagation

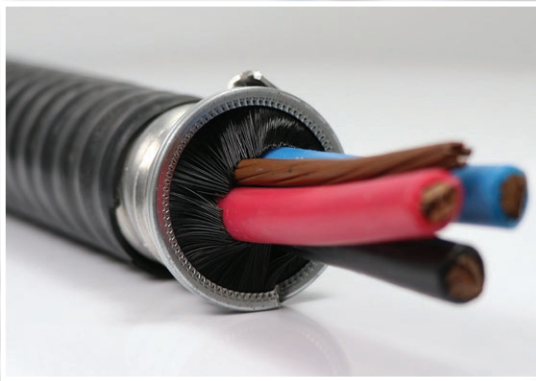
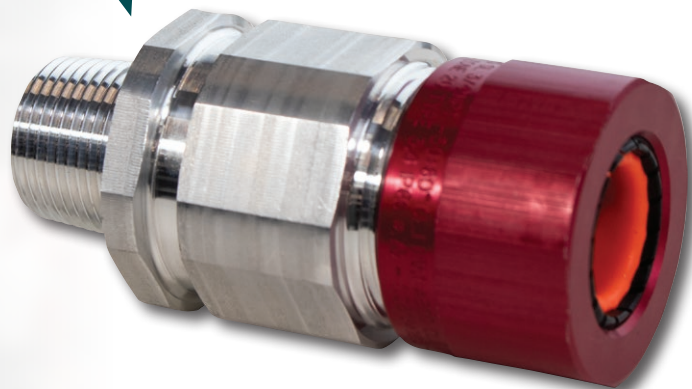
Class I, Div. 1 & 2, Groups A, B, C, D
Class II, Div. 1 & 2, Groups E, F, G
Class III
Class I, Zone 1, Groups IIC, Zone 20
Type 3, 4, 4X, 6, IP66, IPX8 6ft/1hr
-50°C to 60°C



FEATURES:

MC2X Series is used exclusively for metal clad, teck, and unarmored cables where it is essential to provide a barrier seal between an electrical device and conductors

- New epoxy resin cures much faster than traditional putty
- Patent pending disc brush dam allows bristles to fall between conductors, creating a better dam
- New Hawke Express and CELOX twist nozzles allows for the fastest set-up on the market!
- New design allows for IP66, IPx8, Type 4X, 6 Ratings



New easy to use resin barrier solution!

Very Different Methods

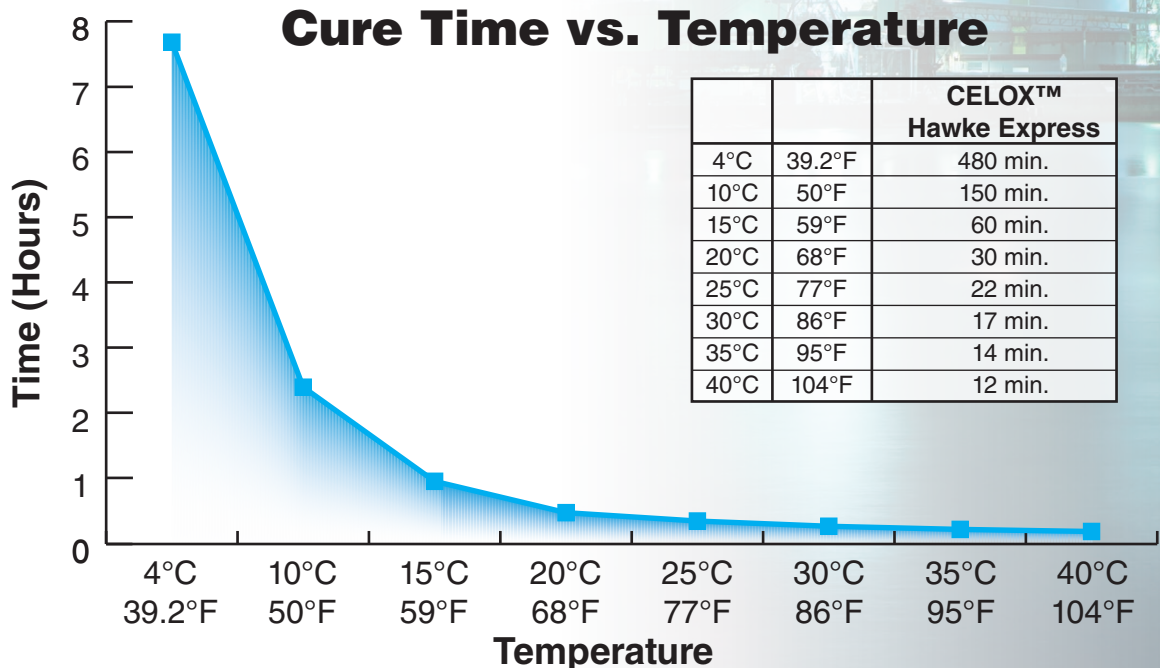
TRADITIONAL

Unlike the traditional mixing putty, which can take several minutes to prep and hours to cure...



NEW

...the NEW Hawke Express and CELOX™ resin takes seconds to set-up and only minutes to cure!





Saves Time

Unlike our competitions and traditional methods, there is no mixing, measuring, and stirring while pouring the resin to create the barrier dam.



Saves Money

Our new solution saves waste and set up time, as each tube is reusable, saving indirect labor time.



Easy Install

Once the cable and gland is prepped, the express resin takes seconds to install and just minutes to cure. Energize the same day!



SEALING METHOD	
CATALOG NUMBER	SIZE PACKAGE
HQS-014 ML	14ml (.47oz)
HQS-024 ML	24ml (81oz)
HQS-050 ML	50ml (1.70oz)
KQS-250 ML	250ml (8.45oz)

SUITABLE ARMORED & UNARMORED CABLE TYPES	
AC-	AC90, ACWU90, AC90-HL, ACWU90-HL, ACG90, ACGWU90
MC-	MCC, MCI, MCI-A, MC-HL
RA-	RA90, RA90-HL
TECK-	TECK90, TECK90-HL
TRAY-	TC, TC-ER, TC-ER-HL, PLTC, PLTC-ER, ITC, ITC-ER, MV, TYPE P

CATALOG NUMBER	ENTRY THREAD SIZE (NPT)	MAX NUMBER OF CORES	THROUGH DIAMETER	CABLE ACCEPTANCE DETAILS			
				ARMOR DIAMETER		DIAMETER	
				MIN.	MAX.	MIN.	MAX.
MC2X1B	1/2"	6	0.39" (9.9)	0.43" (10.9)	0.55" (14.0)	0.51" (13.0)	0.63" (16.0)
MC2X1C	1/2"	10	0.48" (12.2)	0.52" (13.2)	0.74" (18.8)	0.60" (15.2)	0.79" (20)
MC2X2	3/4"	21	0.71" (18.1)	0.65" (16.5)	0.95" (24.1)	0.73" (18.5)	1.00" (25.4)
MC2X3	1"	42	0.96" (26.4)	0.89" (22.6)	1.23" (31.2)	0.97" (24.6)	1.31" (33.3)
MC2X4	1-1/4"	73	1.16" (29.5)	1.15" (29.5)	1.48" (37.6)	1.23" (31.2)	1.56" (39.6)
MC2X5	1-1/2"	80	1.35" (34.3)	1.39" (35.3)	1.62" (41.1)	1.47" (37.3)	1.78" (45.2)
MC2X6	2"	80	1.62" (41.1)	1.39" (35.3)	1.89" (48.0)	1.47" (37.3)	2.04" (51.8)
MC2X7	2-1/2"	100	2.09" (53.1)	1.85" (47.0)	2.36" (59.9)	1.93" (49.0)	2.51" (63.8)
MC2X8	3"	120	2.52" (64.0)	2.19" (55.6)	2.81" (71.4)	2.27" (57.7)	3.01" (76.5)
MC2X9	3-1/2"	120	3.01" (76.5)	2.69" (68.3)	3.28" (83.3)	2.77" (70.4)	3.46" (87.9)
MC2X0	4"	120	3.50" (88.9)	3.28" (83.3)	3.82" (97.0)	3.46" (87.9)	4.07" (103.4)

Cable armor diameter and cable jacket diameter refer to the dimensions across the crest.



KILLARK

www.hubbell-killark.com

Harsh & Hazardous



KILLARK[®]

2112 Fenton Logistics Park Blvd.
Fenton, MO 63026
TEL: (314) 531-0460
www.hubbell-killark.com • killarkinfo@hubbell.com

Hubbell Canada LP
870 Brock Road South
Pickering, Ontario L1W 1Z8
(905) 839-1138
infohclp@hubbell-canada.com

Hubbell Products Mexico
Calle 5 Sur No. 105 Col. Parque
Ind. Toluca 2000
Toluca Edo. Mex. CP 50200
Tel: (01 52) 559-151-9999
info@hubbell.com.mx

Hubbell[®] Construction and Energy

A Division of Hubbell, Inc.
HKPR-MC2X 07-20 © Killark, 2020

