

SIRH | ZENITH™

INFRARED RADIANT HEATER

ZENITH™



COMFORTABLY RADIANT!

Warm up your summer nights and autumn days with our Zenith infrared radiant heater. It's perfect for terraces, outdoor waiting areas, arenas and spas. It can even be used in hard-to-heat areas such as factories. With its 14-gauge aluminum cabinet and stainless steel grille, the Zenith is lightweight yet rugged. Now, you can create your own comfortable environment, any time of the year.

GENERATES INSTANT HEAT

COMPACT, LIGHTWEIGHT, STURDY AND EASY TO INSTALL

CLEAN ELECTRICAL ENERGY WITH NO AIR DISPLACEMENT

WEATHER-RESISTANT MODELS AVAILABLE

347 V MODEL AVAILABLE

COLOUR

- black

FINISH

- super-resistant polyester powdercoat

MANUFACTURING

- 14-gauge aluminum housing
- stainless steel grille
- specialized embossed aluminum reflectors that optimize radiant efficiency and reduce glare
- standard mounting bracket (included)

LAMP

- quartz lamp with glare-reducing filter and tungsten filament produces short-wave infrared heat
- 80% radiant efficiency

CONTROL

- electronic dimmer with timer (optional) (SIRHC402-1 or independent switch*)

INSTALLATION

- on wall or ceiling with mounting bracket (included) or pole mounted (adaptor not provided), in accordance with clearances and installation heights as specified in the installation manual

WARRANTY

- three years

* The power feeding the units can be reduced using controls that meet the following requirements: the controls must be able to handle inductive and resistive loads. They must also have circuits to regulate the start-up current since this type of appliance generates a high start-up current.

IDEAL FOR:

terrace, warehouse, factory, outdoor waiting area, spa

FOR MAXIMUM EFFICIENCY

**ELECTRONIC DIMMER WITH TIMER (OPTIONAL)
SIRHC402-1**



°STELPRO

Stelpro reserves the right to modify descriptions, manufacturing specifications or prices without prior notice. No returns accepted on optional-colour products. For all the latest models and prices, please refer to our website at www.stelpro.com.



FC_SIRH_EN_280722

TECHNICAL SPECIFICATIONS

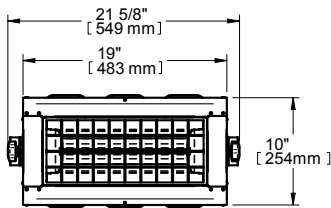
PRODUCT	WEATHER-RESISTANT	POWER	VOLTAGE	FREQUENCY	LENGTH		HEIGHT		DEPTH		WEIGHT	
CODE	CODE	WATTS	VOLTS	HZ	MM	IN.	MM	IN.	MM	IN.	KG	LB
SIRH1501W	SIRH1501WR	1500	120	60	483	19	254	10	143	5 5/8	5	11
SIRH2002W	SIRH2002WR	2000/1600	240/208	60	483	19	254	10	143	5 5/8	5	11
SIRH4002W	SIRH4002WR	4000/3200	240/208	60	483	19	403	15 7/8	143	5 5/8	6.25	13.8
SIRH4203W	SIRH4203WR	4180	347	60	483	19	554	21 13/16	143	5 5/8	7.4	16.3
SIRH6002W	SIRH6002WR	6000/4800	240/208	60	483	19	554	21 13/16	143	5 5/8	7.4	16.3

ACCESSORIES

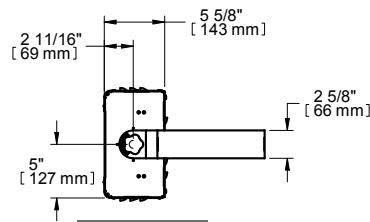
PRODUCT	DESCRIPTION
KIT-ESIRH151	infrared replacement element 1500 W @ 120 V (SIRH1501 and SIRH4203 model)
KIT-ESIRH202	infrared replacement element 2000 W/1600 W @ 240 V/208 V
KIT-SIRH-SUP1	expandable support from 20 in. to 34 in. – 508 mm to 864 mm
SIRHC402-1	electronic dimmer with timer (silver), 4000 W/3300 W/2000 W @ 240 V/208 V/120 V max

TECHNICAL DRAWINGS

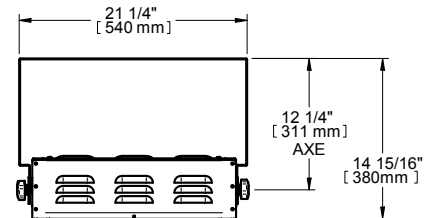
1500 W AND 2000 W MODELS



FRONT

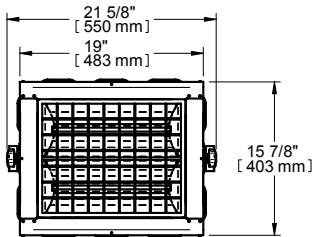


SIDE

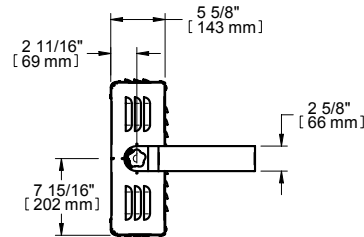


TOP

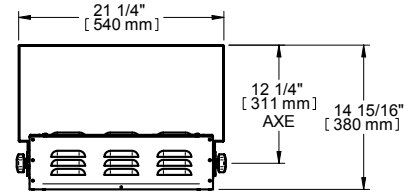
4000 W MODEL



FRONT

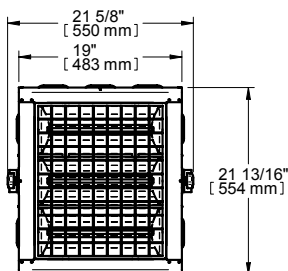


SIDE

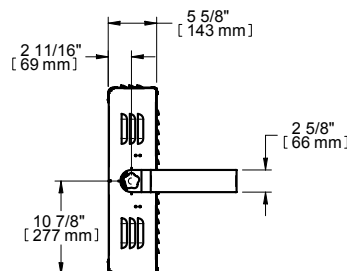


TOP

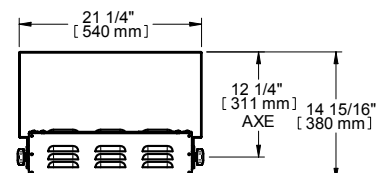
4180 W AND 6000 W MODELS



FRONT



SIDE



TOP