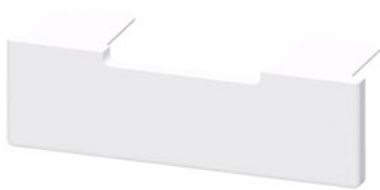


Labeling plate 26 mm for PT relay



**General technical data**

display version LED	No
design of the switching function positively driven	No
reference code according to IEC 81346-2	C
Substance Prohibitance (Date)	05/01/2012
product component plug-in socket	No

**Auxiliary circuit**

number of NC contacts for auxiliary contacts	0
number of NO contacts for auxiliary contacts	0
number of CO contacts for auxiliary contacts	0

**Connections/ Terminals**

product function removable terminal	No
-------------------------------------	----

**Installation/ mounting/ dimensions**

mounting position	any
height	8 mm
width	26.5 mm
depth	8.5 mm

**Ambient conditions**

ambient temperature	
• during storage	-25 ... +70 °C
• during transport	-25 ... +70 °C

**Certificates/ approvals**

General Product Approval	other
--------------------------	-------

[Confirmation](#)



[Confirmation](#)

**Further information**

Information- and Downloadcenter (Catalogs, Brochures,...)

<https://www.siemens.com/ic10>

Industry Mall (Online ordering system)

<https://mall.industry.siemens.com/mall/en/en/Catalog/product?mlfb=LZS:PT17040>

Cax online generator

<http://support.automation.siemens.com/WW/CAXorder/default.aspx?lang=en&mlfb=LZS:PT17040>

Service&Support (Manuals, Certificates, Characteristics, FAQs,...)

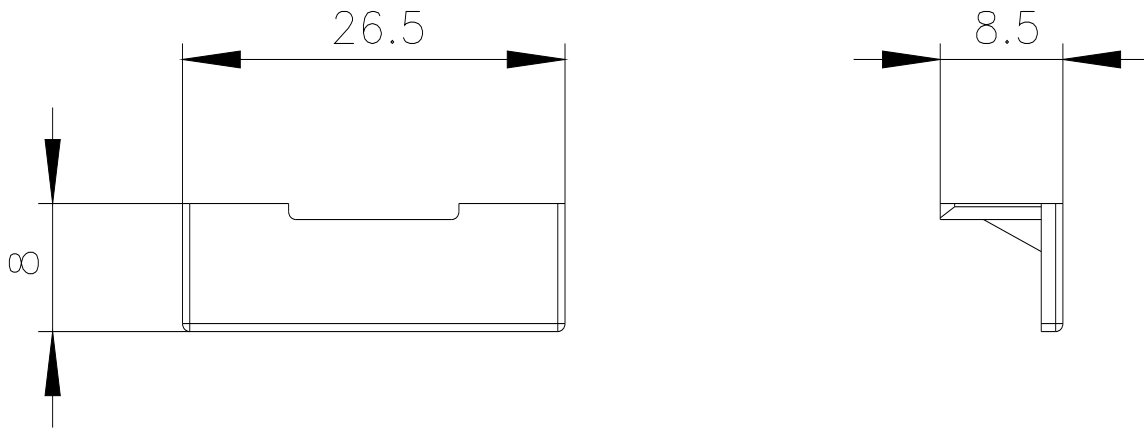
<https://support.industry.siemens.com/cs/ww/en/ps/LZS:PT17040>

Image database (product images, 2D dimension drawings, 3D models, device circuit diagrams, EPLAN macros, ...)

[http://www.automation.siemens.com/bilddb/cax\\_de.aspx?mlfb=LZS:PT17040&lang=en](http://www.automation.siemens.com/bilddb/cax_de.aspx?mlfb=LZS:PT17040&lang=en)

Characteristic: Derating

<https://support.industry.siemens.com/cs/ww/en/ps/LZS:PT17040/manual>



last modified:

12/23/2020 