



RHB1S-LED

LED Round Highbay



IDEAL APPLICATIONS

- Warehouses
- Factories
- Gyms
- Industrial Applications

DESCRIPTION:

The Round Highbay provides optimal widespread illumination ideal for warehouses, factories, gyms and other highbay applications. This fixture is color selectable and lumen adjustable.

FEATURES:

- Colour Selectable fixture allows Installer to choose between 4000K/5000K at the time of installation.
- The Lumen adjustable fixture allows installer to select between 3 wattage settings:
RHB1S-LED100A60 - 100W/80W/60W
RHB1S-LED150A100 - 150W/120W/100W
- At each wattage setting, the brightness can be adjusted using the DC dimmer and remote control
- Ruggedly designed with die cast aluminum body and polycarbonate lens.
- Easy to install with mounting hook and 2 meter cord for line voltage and 0.5 meter cord for 0 -10V dimming.
- Fixture can be suspended or yoke mounted. (Yoke sold as a separate accessory)
- Accessories include Aluminum Reflector, Yoke, PC reflectors, PC Reflector Cover and Ring, Wire Guard, M10/M12 to 1/2" / 3/4" Adaptor with Junction Box, Motion Sensor and Remote Control.
- Optional dual-functionality motion sensor/dimmer with easy plug-and-play install (More details on page 10)

SPECIFICATIONS*	RHB1S-LED100A60	RHB1S-LED150A100
Watts	99.9W	150.4W
Lumens (Maximum)	14300.6 lm	21827 lm
Efficacy (Lm/W)	143.2	145.1
Colour Temp	VK - Colour Selectable (4000K,5000K)	
Voltage	120-277V, 120-347V	
CRI	85	
THD	15%	
PF	0.9	
Dimming	0-10V Dimming (Range: 10%-100%)*	
LED Life @ 100,000 Hours	81%	
Beam Distribution	90 Degrees	
Finish	Matte Black	
Housing Details	Die Cast Aluminum	
Lens Details	Clear PC Lens	
Mounting	Pendant, Suspended*, Yoke	
Operating Temp.	Without Motion Sensor: -40°C to 50°C With Motion Sensor: -30°C to 50°C With Battery Back Up: 10°C to 50°C	
Certifications	UL, Wet Location, IP65, 3G, NEMA4X**, NSF**, DLC 5.1 Premium	
Options Sold Separately	Yoke, Junction box with adapter, Wire guard, Polycarbonate/Aluminum Reflectors and Cover, DC Microwave Motion Sensor/ DC dimmer and Remote and Remote, Emergency Battery Back Up	

* Specs shown are for 120-347V, 4000K setting

Note: For lumen outputs at other wattage settings, please view Lumen Adjustable Settings table on page 6.

** Only available in RHB1S-LED150A100-H-VK

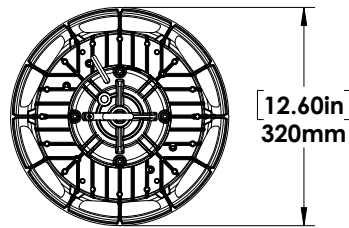


120-347V
Versions Only

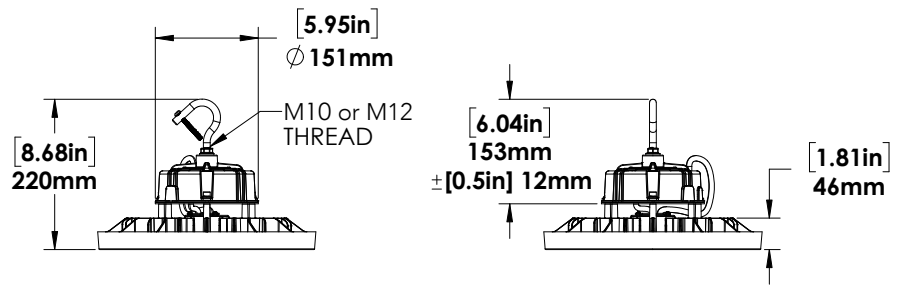
DIMENSIONS:

**FIXTURE
DIMENSIONS**

TOP VIEW

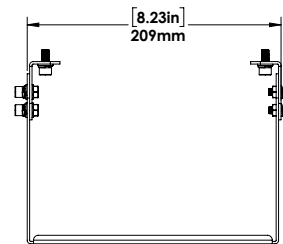


SIDE VIEW

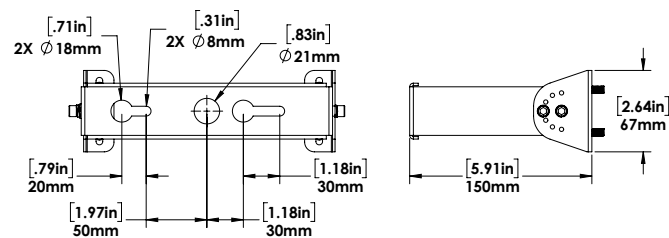


YOKE

TOP VIEW



SIDE VIEW



Note: Can be adjusted to increments of 30 Degrees

DIMENSIONS:

