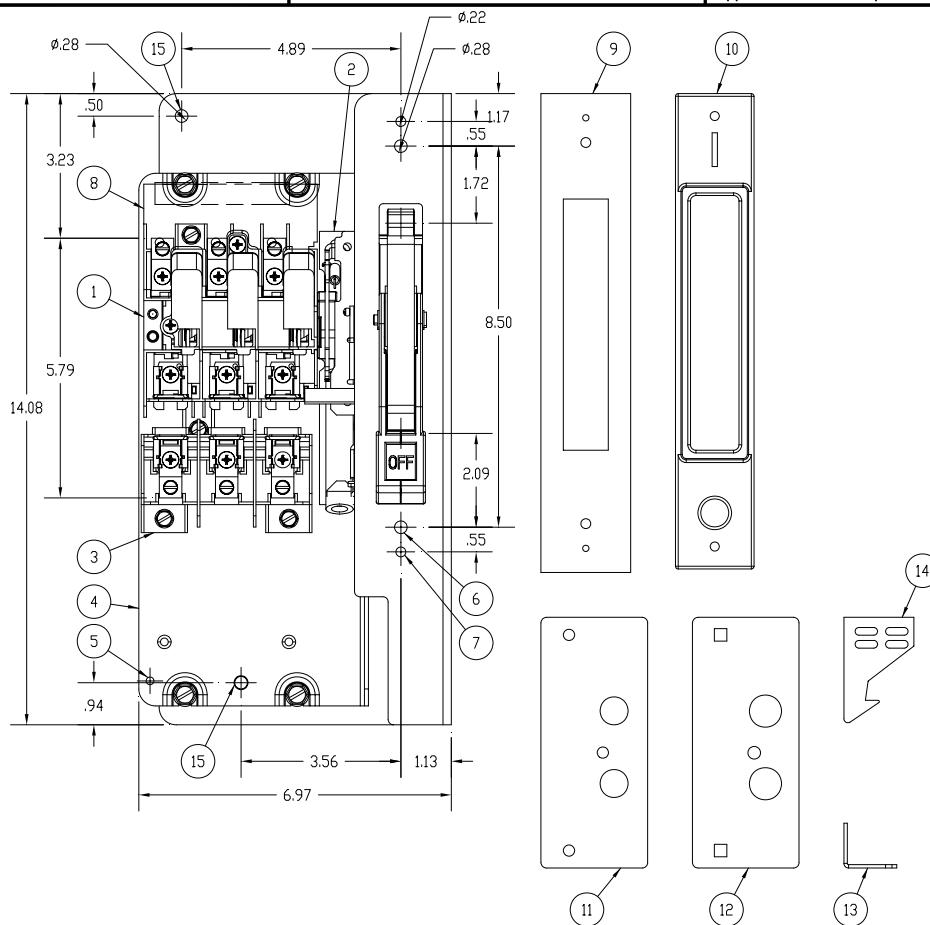


### Component Data Sheet

	<p><b>⚠ Danger</b></p> <p><b>Hazardous Voltage.</b> Will cause death or serious injury.</p>	<p><b>⚠ Peligro</b></p> <p><b>Tensión peligrosa.</b> Puede causar la muerte o lesiones graves.</p>	<p><b>⚠ Danger</b></p> <p><b>Tension dangereuse.</b> Danger de mort ou risque de blessures graves.</p>
	<p>Turn off and lock out all power supplying this device before working on this device. Replace all covers before power supplying this device is turned on.</p>	<p>Desenergice totalmente antes de instalar o darle servicio. Reemplace todas las barreras y cubiertas antes de energizar el interruptor.</p>	<p>Couper l'alimentation de l'appareil et barrer avant de travailler. Remplacez tous les couverts avant que l'approvisionnement de pouvoir soit alimenté.</p>



<ol style="list-style-type: none"> <li>1) Line Base Assembly (factory installed)</li> <li>2) Mechanism Assembly (factory installed)</li> <li>3) Load Base Assembly (factory installed)</li> <li>4) Mounting Pan</li> <li>5) Mounting hole for Ground Lug Kit, HG61234</li> <li>6) Flange Mounting Hole</li> <li>7) Handle Cover Mounting Hole</li> <li>8) Clear Line Shield (factory installed)</li> <li>9) Handle Gasket, required for NEMA Type 12</li> <li>10) Handle Cover Plate</li> <li>11) Door handle gasket, required for Hoffman A-xxAB enclosures or Rittal E-xxAB enclosures</li> <li>12) Door handle plate, required for Hoffman A-xxAB enclosures or Rittal E-xxAB enclosures</li> <li>13) Cover Interlock Mounting Bracket</li> <li>14) Cover Interlock</li> <li>15) Support Mounting Hole</li> </ol>	<p style="text-align: center;"><b>Fasteners ( not shown )</b></p> <ol style="list-style-type: none"> <li>16) Machine screws, (2) 10-32 x 1", Handle cover plate</li> <li>17) Machine screws, (2) 1/4-20 x 3/4", Flange mounting</li> <li>18) Machine screws, (2) #8-32 X 5/16 pan head, Cover interlock</li> <li>19) Bolt, (2) 1/4-20 X 5/8, round head short square neck, Door handle plate</li> <li>20) Flat washers, (6) 1/4", Flange mounting, Door handle plate</li> <li>21) Lock washers, (2) #10, Handle cover plate</li> <li>22) Lock washers, (4) 1/4", Flange mounting, Door handle plate</li> <li>23) Lock washers, external tooth, (2) #8, Cover interlock</li> <li>24) Nut, (4) 1/4-20, Flange mounting, Door handle plate</li> <li>25) Nut, (2) 10-32, Handle cover plate</li> </ol>
--	--

# SIEMENS

**Cat. No. VBFS321F**

**30 Amp Maximum**

**Suitable for use in NEMA Type 1/3R/12 enclosures**

**Horsepower Ratings**

**Fusible Flange Mounted Disconnect Switch**

**Maximum 240 Volts AC (V~)**

**Type VBII**

**Maximum 250 Volts DC (V-)**

**SEE 500446A00 FOR HORSEPOWER TABLE**

**Continuous load current not to exceed 80% of the rating of fuses employed in other than motor circuits.**

**Suitable for use as Service Equipment when used with ground bar kit HG61234 on 3 phase, 3 wire systems or when used with HN612 neutral kit on 1 phase, 3 wire or 3 phase, 4 wire systems.**

## **Fuse and Short Circuit Information**

When used with Class K fuses, Class H fuses or a UL Listed Circuit Breaker rated for 10 000 amperes, RMS symmetrical, **240** volts maximum, this switch is suitable for use on a circuit capable of delivering not more than 10 000 amperes, RMS symmetrical, **240** volts, maximum.

When used with Class R fuses and Class R fuse clip kit **HR612** properly installed, this switch is suitable for use on a circuit capable of delivering not more than 200 000 amperes, RMS symmetrical, **240** volts maximum.

**Danger** – Unless Class R fuses are used, this switch may present a risk of fire and injury to persons if installed on circuits capable of delivering more than 10 000 amperes, RMS symmetrical.

When used with fuses marked with DC ratings, this switch is suitable for use on a circuit capable of delivering not more than the DC interrupting rating marked on the fuse, at the DC voltage rating marked on the fuse, up to a maximum of 10 000 amperes, **250** volts DC.

**Danger** – Unless fuses marked for an interrupting rating of 10 000 amperes at **250** volts DC are used, this switch may present a risk of fire and injury to persons if installed on circuits capable of delivering more than 10 000 amperes.

Renewable link fuses are not recommended.

## **Terminal Information**

## **USE 60°/75°C COPPER OR ALUMINUM WIRE**

Description	Wire Range	Wire Tightening Torque <sup>3</sup>	Lug Mounting Torque <sup>3</sup>
Line, Load & Main Neutral	14-6 AWG	35 lb-ins. 14-10 / 40 lb-ins. 8 AWG 45 lb-ins. 6-4 AWG	24 lb-ins.
Service Ground	14-4 AWG	35 lb-ins. 14-10 / 40 lb-ins. 8 AWG 45 lb-ins. 6-4 AWG	24 lb-ins.

**UL Listed Compression Lugs (Refer to manufacturers instructions for proper installation)**

**SEE 500445A00 FOR COMPRESSION LUG TABLE**

## **Accessories**

Aux. Switch (1NO - 1NC)	HA161234	Neutral	HN612	Class R Fuse Kit (Rejects Class H & K Fuses)	HR612
Aux. Switch (2NO - 2NC)	HA261234	200% Neutral	—	Class T Fuse Kit	—
Aux. Switch (1NO - 1NC)	HA361234	Ground Lug Kit (Wire Range 14-4 AWG)	HG61234	Compression Lug Neutral Barrier	HCL612 <sup>4</sup>
Copper Lug Kit	HLC612	Fuse Puller Kit ( 3 Per Kit )	HP61	Compression Lug Mounting Kit	—

## **Replacement Parts**

Line Base	HFB21	Replacement Lug Kit	HL612	Load Base	HBB21
-----------	-------	---------------------	-------	-----------	-------

<sup>1</sup> Use outer two poles.

<sup>2</sup> The starting current of motors more than the standard horsepower or kilowatt ratings may require the use of fuses with appropriate time delay characteristics.

<sup>3</sup> When tightening or replacing connectors, refer to lug mounting torque in Terminal & Wire Information Table.

<sup>4</sup> If compression lugs are used for the neutral, order compression lug neutral barrier kit **HCL612**.

Protected by one or more of the following US Patents: 6,134,979, 6,356,460, 5,990,439.

Assembled in Mexico

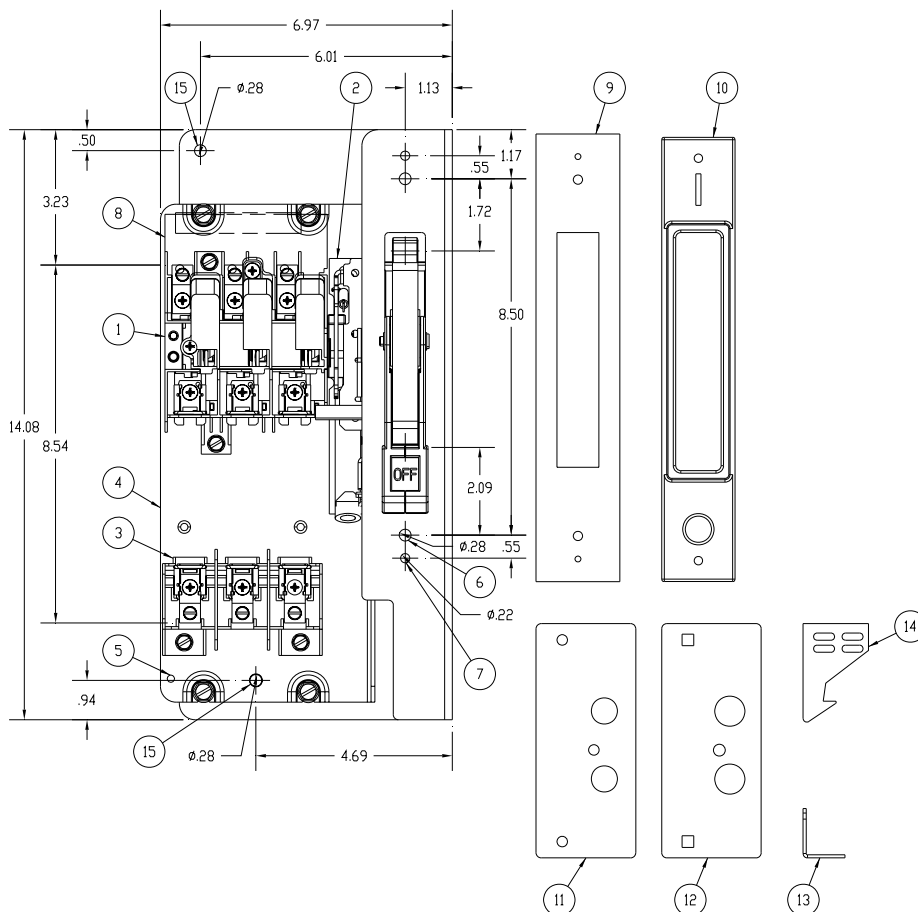
**Technical Support:**

Toll Free: 1-800-241-4453

Internet: <http://www.sea.siemens.com/power>

## Component Data Sheet

	<div> <div>  <b>Danger</b> </div> <div>  <b>Peligro</b> </div> <div>  <b>Danger</b> </div> </div>		
	<p><b>Hazardous Voltage.</b>  <b>Will cause death or serious injury.</b></p> <p>Turn off and lock out all power supplying this device before working on this device.</p> <p>Replace all covers before power supplying this device is turned on.</p>	<p><b>Tensión peligrosa.</b>  <b>Puede causar la muerte o lesiones graves.</b></p> <p>Desenergice totalmente antes de instalar o darle servicio. Reemplace todas las barreras y cubiertas antes de energizar el interruptor.</p>	<p><b>Tension dangereuse.</b>  <b>Danger de mort ou risque de blessures graves.</b></p> <p>Couper l'alimentation de l'appareil et barrer avant de travailler.</p> <p>Remplacez tous les couverts avant que l'alprovisionnement de pouvoir soit alimenté.</p>



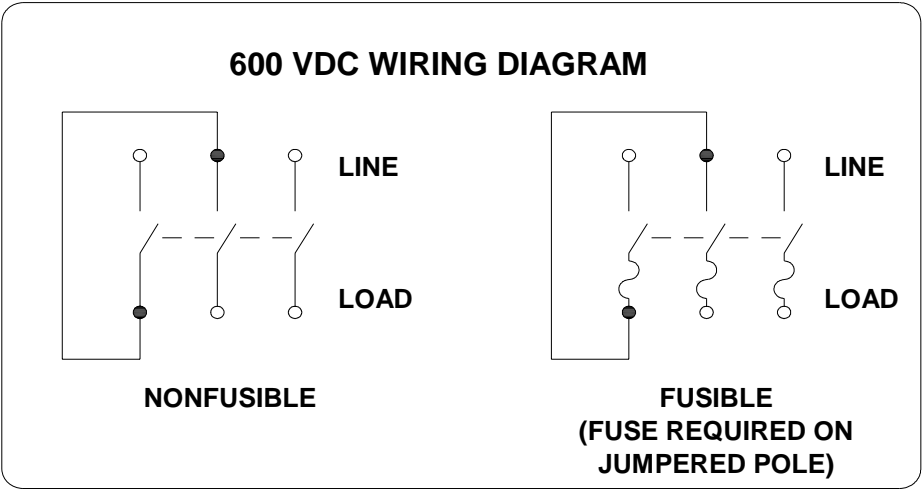
- 1) Line Base Assembly (factory installed)
- 2) Mechanism Assembly (factory installed)
- 3) Load Base Assembly (factory installed)
- 4) Mounting Pan
- 5) Mounting hole for Ground Lug Kit, HG61234
- 6) Flange Mounting Hole
- 7) Handle Cover Mounting Hole
- 8) Clear Line Shield (factory installed)
- 9) Handle Gasket, required for NEMA Type 12
- 10) Handle Cover Plate
- 11) Door handle gasket, required for Hoffman A-xxAB enclosures or Rittal E-xxAB enclosures
- 12) Door handle plate, required for Hoffman A-xxAB enclosures or Rittal E-xxAB enclosures
- 13) Cover Interlock Mounting Bracket
- 14) Cover Interlock
- 15) Support Mounting Hole

**Fasteners ( not shown )**

- 16) Machine screws, (2) 10-32 x 1", Handle cover plate
- 17) Machine screws, (2) 1/4-20 x 3/4", Flange mounting
- 18) Machine screws, (2) #8-32 X 5/16 pan head, Cover interlock
- 19) Bolt, (2) 1/4-20 X 5/8, round head short square neck, Door handle plate
- 20) Flat washers, (6) 1/4", Flange mounting, Door handle plate
- 21) Lock washers, (2) #10, Handle cover plate
- 22) Lock washers, (4) 1/4", Flange mounting, Door handle plate
- 23) Lock washers, external tooth, (2) #8, Cover interlock
- 24) Nut, (4) 1/4-20, Flange mounting, Door handle plate
- 25) Nut, (2) 10-32, Handle cover plate

Component Data Sheet

	 <b>Danger</b>	 <b>Peligro</b>	 <b>Danger</b>
	<p><b>Hazardous Voltage.</b> Will cause death or serious injury.</p> <p>Turn off and lock out all power supplying this device before working on this device. Replace all covers before power supplying this device is turned on.</p>	<p><b>Tensión peligrosa.</b> Puede causar la muerte o lesiones graves.</p> <p>Desenergice totalmente antes de instalar o darle servicio. Reemplace todas las barreras y cubiertas antes de energizar el interruptor.</p>	<p><b>Tension dangereuse.</b> Danger de mort ou risque de blessures graves.</p> <p>Couper l'alimentation de l'appareil et barrer avant de travailler. Remplacez tous les couverts avant que l'approvisionnement de pouvoir soit alimenté.</p>



# SIEMENS

**Cat. No. VBFS361F**  
**30 Amp Maximum**

**Fusible Flange Mounted Disconnect Switch**  
**Maximum 600 Volts AC (V~)**

**Type VBII**  
**Maximum 600<sup>5</sup> Volts DC (V-)**

**Suitable for use in NEMA Type 1/3R/12 enclosures**

## Horsepower Ratings

**SEE 500446E00 FOR HORSEPOWER TABLE**

Continuous load current not to exceed 80% of the rating of fuses employed in other than motor circuits.

Suitable for use as Service Equipment when used with ground bar kit HG61234 on 3 phase, 3 wire systems or when used with HN612 neutral kit on 1 phase, 3 wire or 3 phase, 4 wire systems.

## Fuse and Short Circuit Information

When used with Class K fuses, Class H fuses or a UL Listed Circuit Breaker rated for 10 000 amperes, RMS symmetrical, 600 volts maximum, this switch is suitable for use on a circuit capable of delivering not more than 10 000 amperes, RMS symmetrical, 600 volts, maximum.

When used with Class R fuses and Class R fuse clip kit HR612 properly installed, this switch is suitable for use on a circuit capable of delivering not more than 200 000 amperes, RMS symmetrical, 600 volts maximum.

When used with Class J fuses with the load base relocated to the "J Fuse" position marked on the enclosure this switch is suitable for use on a circuit capable of delivering not more than 200 000 amperes, RMS symmetrical, 600 volts maximum.

**Danger** – Unless Class R or J fuses are used, this switch may present a risk of fire and injury to persons if installed on circuits capable of delivering more than 10 000 amperes, RMS symmetrical.

When used with fuses marked with DC ratings, this switch is suitable for use on a circuit capable of delivering not more than the DC interrupting rating marked on the fuse, at the DC voltage rating marked on the fuse, up to a maximum of 10 000 amperes, 600<sup>5</sup> volts DC.

**Danger** – Unless fuses marked for an interrupting rating of 10 000 amperes at 600<sup>5</sup> volts DC are used, this switch may present a risk of fire and injury to persons if installed on circuits capable of delivering more than 10 000 amperes.

Renewable link fuses are not recommended.

## Terminal Information

## **USE 60°/75°C COPPER OR ALUMINUM WIRE**

Description	Wire Range	Wire Tightening Torque <sup>3</sup>	Lug Mounting Torque <sup>3</sup>
Line, Load & Main Neutral	14-6 AWG	35 lb-ins. 14-10 / 40 lb-ins. 8 AWG 45 lb-ins. 6-4 AWG	24 lb-ins.
Service Ground	14-4 AWG	35 lb-ins. 14-10 / 40 lb-ins. 8 AWG 45 lb-ins. 6-4 AWG	24 lb-ins.

## **UL Listed Compression Lugs (Refer to manufacturers instructions for proper installation)**

**SEE 500445A00 FOR COMPRESSION LUG TABLE**

## Accessories

Aux. Switch (1NO - 1NC)	HA161234	Neutral	HN612	Class R Fuse Kit (Rejects Class H & K Fuses)	HR612
Aux. Switch (2NO - 2NC)	HA261234	200% Neutral	—	Class T Fuse Kit	—
Aux. Switch (1NO - 1NC)	HA361234	Ground Lug Kit (Wire Range 14-4 AWG)	HG61234	Compression Lug Neutral Barrier	HCL612 <sup>4</sup>
Copper Lug Kit	HLC612	Fuse Puller Kit ( 3 Per Kit )	HP61	Compression Lug Mounting Kit	—

## Replacement Parts

Line Base	HFB61	Replacement Lug Kit	HL612	Load Base	HBB61
-----------	-------	---------------------	-------	-----------	-------

<sup>1</sup> Use outer two poles.

<sup>2</sup> The starting current of motors more than the standard horsepower or kilowatt ratings may require the use of fuses with appropriate time delay characteristics.

<sup>3</sup> When tightening or replacing connectors, refer to lug mounting torque in Terminal & Wire Information Table.

<sup>4</sup> If compression lugs are used for the neutral, order compression lug neutral barrier kit HCL612.

<sup>5</sup> 600 VDC ratings apply when wired per the wiring diagram on page 2.

Protected by one or more of the following US Patents: 6,134,979, 6,356,460, 5,990,439.

Assembled in Mexico

**Technical Support:**

Toll Free: 1-800-241-4453

Internet: <http://www.sea.siemens.com/power>



# SIEMENS

**Cat. No. VBFS322F**  
**60 Amp Maximum**

**Fusible Flange Mounted Disconnect Switch**  
**Maximum 240 Volts AC (V~)**

**Type VBII**  
**Maximum 250 Volts DC (V-)**

**Suitable for use in NEMA Type 1/3R/12 enclosures**

## Horsepower Ratings

**SEE 500446G00 FOR HORSEPOWER TABLE**

**Continuous load current not to exceed 80% of the rating of fuses employed in other than motor circuits.**

**Suitable for use as Service Equipment when used with ground bar kit HG61234 on 3 phase, 3 wire systems or when used with HN623 neutral kit on 1 phase, 3 wire or 3 phase, 4 wire systems.**

## Fuse and Short Circuit Information

When used with Class K fuses, Class H fuses or a UL Listed Circuit Breaker rated for 10 000 amperes, RMS symmetrical, **240** volts maximum, this switch is suitable for use on a circuit capable of delivering not more than 10 000 amperes, RMS symmetrical, **240** volts, maximum.

When used with Class R fuses and Class R fuse clip kit **HR62** properly installed, this switch is suitable for use on a circuit capable of delivering not more than 200 000 amperes, RMS symmetrical, **240** volts maximum.

**Danger** – Unless Class R fuses are used, this switch may present a risk of fire and injury to persons if installed on circuits capable of delivering more than 10 000 amperes, RMS symmetrical.

When used with fuses marked with DC ratings, this switch is suitable for use on a circuit capable of delivering not more than the DC interrupting rating marked on the fuse, at the DC voltage rating marked on the fuse, up to a maximum of 10 000 amperes, **250** volts DC.

**Danger** – Unless fuses marked for an interrupting rating of 10 000 amperes at **250** volts DC are used, this switch may present a risk of fire and injury to persons if installed on circuits capable of delivering more than 10 000 amperes.

Renewable link fuses are not recommended.

## Terminal Information

## **USE 60°/75°C COPPER OR ALUMINUM WIRE**

Description	Wire Range	Wire Tightening Torque <sup>3</sup>	Lug Mounting Torque <sup>3</sup>
Line, Load & Main Neutral	14-2 AWG	35 lb-ins. 14-10 / 40 lb-ins. 8 AWG 45 lb-ins. 6-4 AWG / 50 lb-ins. 3-2 AWG	80 lb-ins.
Service Ground	14-4 AWG	35 lb-ins. 14-10 / 40 lb-ins. 8 AWG 45 lb-ins. 6-4 AWG	24 lb-ins.

**UL Listed Compression Lugs (Refer to manufacturers instructions for proper installation)**

**SEE 500445C00 FOR COMPRESSION LUG TABLE**

## Accessories

Aux. Switch (1NO - 1NC)	HA161234	Neutral	HN623	Class R Fuse Kit (Rejects Class H & K Fuses)	HR62
Aux. Switch (2NO - 2NC)	HA261234	200% Neutral	—	Class T Fuse Kit	—
Aux. Switch (1NO - 1NC)	HA361234	Ground Lug Kit (Wire Range 14-4 AWG)	HG61234	Compression Lug Neutral Barrier	HCL623 <sup>4</sup>
Copper Lug Kit	HLC612	Fuse Puller Kit ( 3 Per Kit )	HP62	Compression Lug Mounting Kit	—

## Replacement Parts

Line Base	HFB22	Replacement Lug Kit	HL612	Load Base	HBB22
-----------	-------	---------------------	-------	-----------	-------

<sup>1</sup> Use outer two poles.

<sup>2</sup> The starting current of motors more than the standard horsepower or kilowatt ratings may require the use of fuses with appropriate time delay characteristics.

<sup>3</sup> When tightening or replacing connectors, refer to lug mounting torque in Terminal & Wire Information Table.

<sup>4</sup> If compression lugs are used for the neutral, order compression lug neutral barrier kit **HCL623**.

Protected by one or more of the following US Patents: 6,134,979, 6,356,460, 5,990,439.

Assembled in Mexico

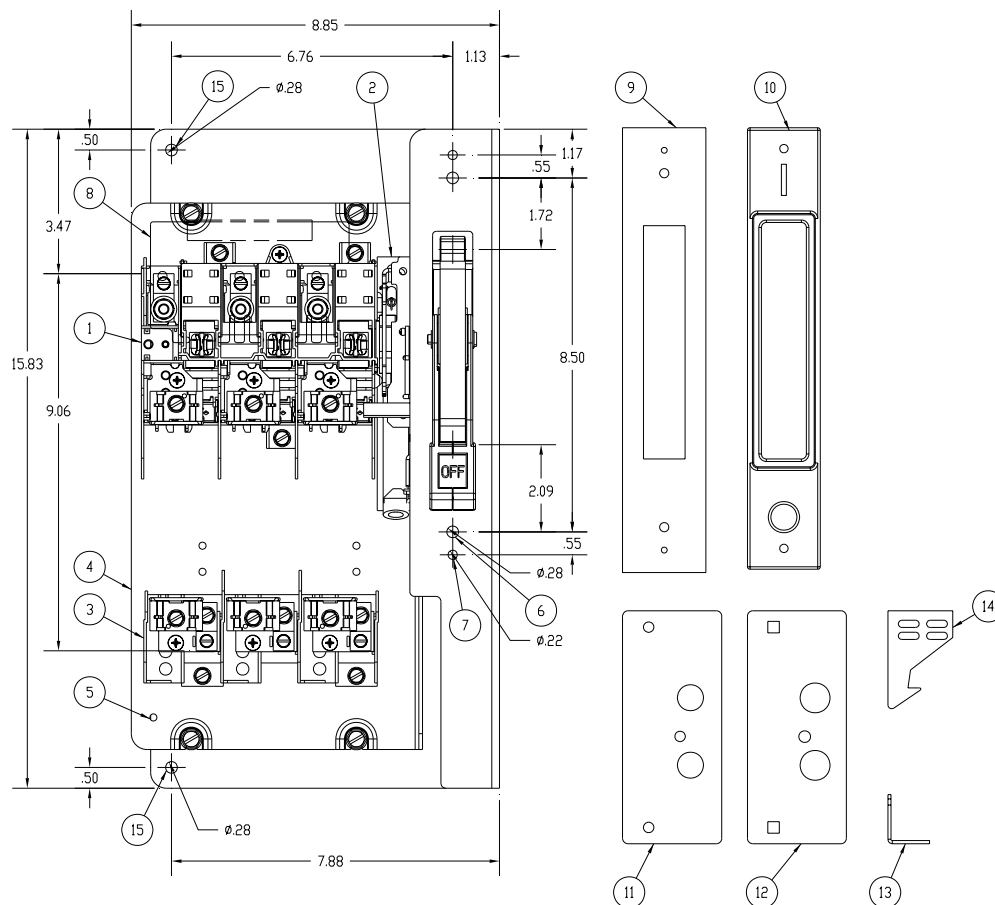
## **Technical Support:**

Toll Free: 1-800-241-4453

Internet: <http://www.sea.siemens.com/power>

### Component Data Sheet

	<p><b>⚠ Danger</b></p> <p><b>Hazardous Voltage.</b> Will cause death or serious injury.</p>	<p><b>⚠ Peligro</b></p> <p><b>Tensión peligrosa.</b> Puede causar la muerte o lesiones graves.</p>	<p><b>⚠ Danger</b></p> <p><b>Tension dangereuse.</b> Danger de mort ou risque de blessures graves.</p>
	<p>Turn off and lock out all power supplying this device before working on this device. Replace all covers before power supplying this device is turned on.</p>	<p>Desenergice totalmente antes de instalar o darle servicio. Reemplace todas las barreras y cubiertas antes de energizar el interruptor.</p>	<p>Couper l'alimentation de l'appareil et barrer avant de travailler. Remplacez tous les couverts avant que l'approvisionnement de pouvoir soit alimenté.</p>

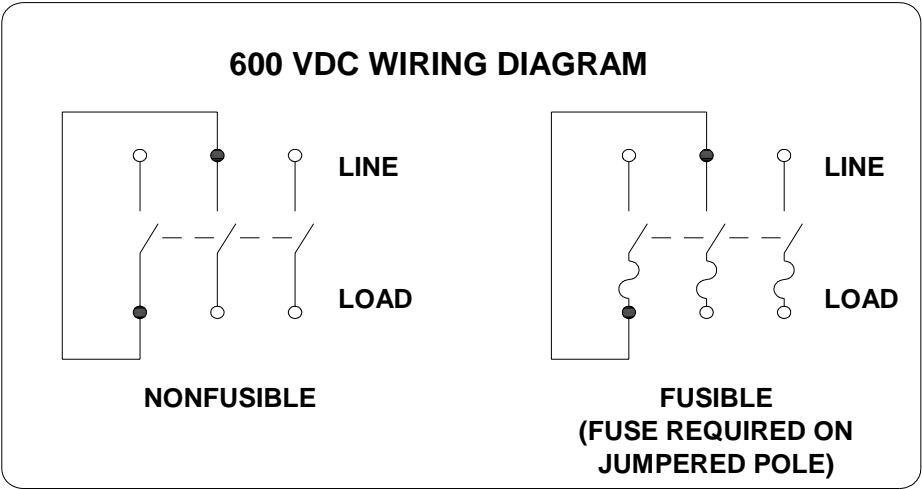


<p>1) Line Base Assembly (factory installed)</p> <p>2) Mechanism Assembly (factory installed)</p> <p>3) Load Base Assembly (factory installed)</p> <p>4) Mounting Pan</p> <p>5) Mounting hole for Ground Lug Kit, HG61234</p> <p>6) Flange Mounting Hole</p> <p>7) Handle Cover Mounting Hole</p> <p>8) Clear Line Shield (factory installed)</p> <p>9) Handle Gasket, required for NEMA Type 12</p> <p>10) Handle Cover Plate</p> <p>11) Door handle gasket, required for Hoffman A-xxAB enclosures or Rittal E-xxAB enclosures</p> <p>12) Door handle plate, required for Hoffman A-xxAB enclosures or Rittal E-xxAB enclosures</p> <p>13) Cover Interlock Mounting Bracket</p> <p>14) Cover Interlock</p> <p>15) Support Mounting Hole</p>	<p><b>Fasteners ( not shown )</b></p> <p>16) Machine screws, (2) 10-32 x 1", Handle cover plate</p> <p>17) Machine screws, (2) 1/4-20 x 3/4", Flange mounting</p> <p>18) Machine screws, (2) #8-32 X 5/16 pan head, Cover interlock</p> <p>19) Bolt, (2) 1/4-20 X 5/8, round head short square neck, Door handle plate</p> <p>20) Flat washers, (6) 1/4", Flange mounting, Door handle plate</p> <p>21) Lock washers, (2) #10, Handle cover plate</p> <p>22) Lock washers, (4) 1/4", Flange mounting, Door handle plate</p> <p>23) Lock washers, external tooth, (2) #8, Cover interlock</p> <p>24) Nut, (4) 1/4-20, Flange mounting, Door handle plate</p> <p>25) Nut, (2) 10-32, Handle cover plate</p>
---	---



Component Data Sheet

 	 <b>Danger</b> Hazardous Voltage. Will cause death or serious injury. Turn off and lock out all power supplying this device before working on this device. Replace all covers before power supplying this device is turned on.	 <b>Peligro</b> Tensión peligrosa. Puede causar la muerte o lesiones graves. Desenergice totalmente antes de instalar o darle servicio. Reemplace todas las barreras y cubiertas antes de energizar el interruptor.	 <b>Danger</b> Tension dangereuse. Danger de mort ou risque de blessures graves. Couper l'alimentation de l'appareil et barrer avant de travailler. Remplacez tous les couverts avant que l'approvisionnement de pouvoir soit alimenté.



# SIEMENS

**Cat. No. VBFS362F**  
**60 Amp Maximum**

**Fusible Flange Mounted Disconnect Switch**  
**Maximum 600 Volts AC (V~)**

**Type VBII**  
**Maximum 600<sup>5</sup> Volts DC (V-)**

**Suitable for use in NEMA Type 1/3R/12 enclosures**

## Horsepower Ratings

**SEE 500446M01 FOR HORSEPOWER TABLE**

Continuous load current not to exceed 80% of the rating of fuses employed in other than motor circuits.

Suitable for use as Service Equipment when used with ground bar kit HG61234 on 3 phase, 3 wire systems or when used with HN623 neutral kit on 1 phase, 3 wire or 3 phase, 4 wire systems.

## Fuse and Short Circuit Information

When used with Class K fuses, Class H fuses or a UL Listed Circuit Breaker rated for 10 000 amperes, RMS symmetrical, 600 volts maximum, this switch is suitable for use on a circuit capable of delivering not more than 10 000 amperes, RMS symmetrical, 600 volts, maximum.

When used with Class R fuses and Class R fuse clip kit HR62 properly installed, this switch is suitable for use on a circuit capable of delivering not more than 200 000 amperes, RMS symmetrical, 600 volts maximum.

When used with Class J fuses with the load base relocated to the "J Fuse" position marked on the enclosure this switch is suitable for use on a circuit capable of delivering not more than 200 000 amperes, RMS symmetrical, 600 volts maximum.

**Danger** – Unless Class R or J fuses are used, this switch may present a risk of fire and injury to persons if installed on circuits capable of delivering more than 10 000 amperes, RMS symmetrical.

When used with fuses marked with DC ratings, this switch is suitable for use on a circuit capable of delivering not more than the DC interrupting rating marked on the fuse, at the DC voltage rating marked on the fuse, up to a maximum of 10 000 amperes, 600<sup>5</sup> volts DC.

**Danger** – Unless fuses marked for an interrupting rating of 10 000 amperes at 600<sup>5</sup> volts DC are used, this switch may present a risk of fire and injury to persons if installed on circuits capable of delivering more than 10 000 amperes.

Renewable link fuses are not recommended.

## Terminal Information

## **USE 60°/75°C COPPER OR ALUMINUM WIRE**

Description	Wire Range	Wire Tightening Torque <sup>3</sup>	Lug Mounting Torque <sup>3</sup>
Line, Load & Main Neutral	14-2 AWG	35 lb-ins. 14-10 / 40 lb-ins. 8 AWG 45 lb-ins. 6-4 AWG / 50 lb-ins. 3-2 AWG	80 lb-ins.
Service Ground	14-4 AWG	35 lb-ins. 14-10 / 40 lb-ins. 8 AWG 45 lb-ins. 6-4 AWG	24 lb-ins.

## **UL Listed Compression Lugs (Refer to manufacturers instructions for proper installation)**

**SEE 500445C00 FOR COMPRESSION LUG TABLE**

## Accessories

Aux. Switch (1NO - 1NC)	HA161234	Neutral	HN623	Class R Fuse Kit (Rejects Class H & K Fuses)	HR62
Aux. Switch (2NO - 2NC)	HA261234	200% Neutral	—	Class T Fuse Kit	—
Aux. Switch (1NO - 1NC)	HA361234	Ground Lug Kit (Wire Range 14-4 AWG)	HG61234	Compression Lug Neutral Barrier	HCL623 <sup>4</sup>
Copper Lug Kit	HLC612	Fuse Puller Kit (3 Per Kit)	HP62	Compression Lug Mounting Kit	—

## Replacement Parts

Line Base	HFB62	Replacement Lug Kit	HL612	Load Base	HBB62
-----------	-------	---------------------	-------	-----------	-------

<sup>1</sup> Use outer two poles.

<sup>2</sup> The starting current of motors more than the standard horsepower or kilowatt ratings may require the use of fuses with appropriate time delay characteristics.

<sup>3</sup> When tightening or replacing connectors, refer to lug mounting torque in Terminal & Wire Information Table.

<sup>4</sup> If compression lugs are used for the neutral, order compression lug neutral barrier kit HCL623.

<sup>5</sup> 600 VDC ratings apply when wired per the wiring diagram on page 2.

Protected by one or more of the following US Patents: 6,134,979, 6,356,460, 5,990,439.

Assembled in Mexico

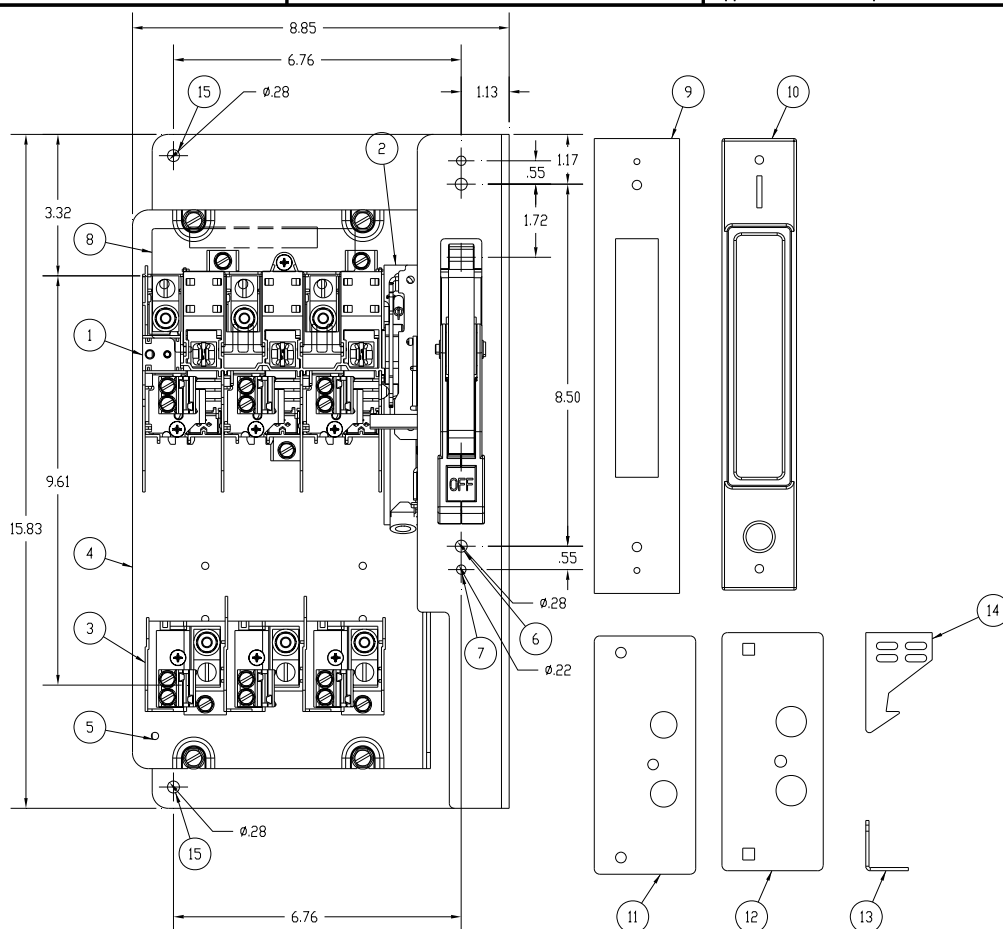
## **Technical Support:**

Toll Free: 1-800-241-4453

Internet: <http://www.sea.siemens.com/power>

### Component Data Sheet

	<p><b>⚠ Danger</b></p> <p><b>Hazardous Voltage.</b> Will cause death or serious injury.</p>	<p><b>⚠ Peligro</b></p> <p><b>Tensión peligrosa.</b> Puede causar la muerte o lesiones graves.</p>	<p><b>⚠ Danger</b></p> <p><b>Tension dangereuse.</b> Danger de mort ou risque de blessures graves.</p>
	<p>Turn off and lock out all power supplying this device before working on this device. Replace all covers before power supplying this device is turned on.</p>	<p>Desenergice totalmente antes de instalar o darle servicio. Reemplace todas las barreras y cubiertas antes de energizar el interruptor.</p>	<p>Couper l'alimentation de l'appareil et barrer avant de travailler. Remplacez tous les couverts avant que l'approvisionnement de pouvoir soit alimenté.</p>



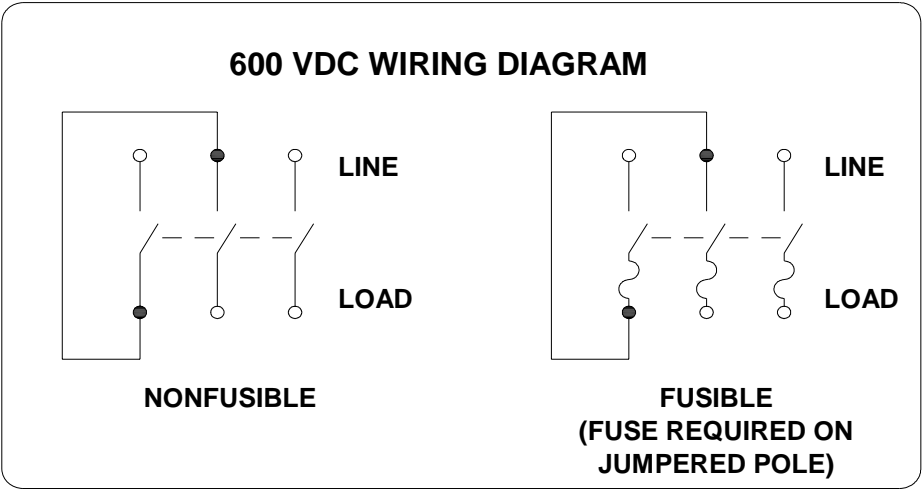
- 1) Line Base Assembly (factory installed)
- 2) Mechanism Assembly (factory installed)
- 3) Load Base Assembly (factory installed)
- 4) Mounting Pan
- 5) Mounting hole for Ground Lug Kit, HG61234
- 6) Flange Mounting Hole
- 7) Handle Cover Mounting Hole
- 8) Clear Line Shield (factory installed)
- 9) Handle Gasket, required for NEMA Type 12
- 10) Handle Cover Plate
- 11) Door handle gasket, required for Hoffman A-xxAB enclosures or Rittal E-xxAB enclosures
- 12) Door handle plate, required for Hoffman A-xxAB enclosures or Rittal E-xxAB enclosures
- 13) Cover Interlock Mounting Bracket
- 14) Cover Interlock
- 15) Support Mounting Hole

#### Fasteners ( not shown )

- 16) Machine screws, (2) 10-32 x 1", Handle cover plate
- 17) Machine screws, (2) 1/4-20 x 3/4", Flange mounting
- 18) Machine screws, (2) #8-32 X 5/16 pan head, Cover interlock
- 19) Bolt, (2) 1/4-20 X 5/8, round head short square neck, Door handle plate
- 20) Flat washers, (6) 1/4", Flange mounting, Door handle plate
- 21) Lock washers, (2) #10, Handle cover plate
- 22) Lock washers, (4) 1/4", Flange mounting, Door handle plate
- 23) Lock washers, external tooth, (2) #8, Cover interlock
- 24) Nut, (4) 1/4-20, Flange mounting, Door handle plate
- 25) Nut, (2) 10-32, Handle cover plate

Component Data Sheet

 	 <b>Danger</b> Hazardous Voltage. Will cause death or serious injury. Turn off and lock out all power supplying this device before working on this device. Replace all covers before power supplying this device is turned on.	 <b>Peligro</b> Tensión peligrosa. Puede causar la muerte o lesiones graves. Desenergice totalmente antes de instalar o darle servicio. Reemplace todas las barreras y cubiertas antes de energizar el interruptor.	 <b>Danger</b> Tension dangereuse. Danger de mort ou risque de blessures graves. Couper l'alimentation de l'appareil et barrer avant de travailler. Remplacez tous les couverts avant que l'approvisionnement de pouvoir soit alimenté.



# SIEMENS

**Cat. No. VBFS363F**  
**100 Amp Maximum**

**Fusible Flange Mounted Disconnect Switch**  
**Maximum 600 Volts AC (V~)**

**Type VBII**  
**Maximum 600<sup>5</sup> Volts DC (V-)**

**Suitable for use in NEMA Type 1/3R/12 enclosures**

## Horsepower Ratings

**SEE 500446AA01 FOR HORSEPOWER TABLE**

Continuous load current not to exceed 80% of the rating of fuses employed in other than motor circuits.

Suitable for use as Service Equipment when used with ground bar kit HG61234 on 3 phase, 3 wire systems or when used with HN623 neutral kit on 1 phase, 3 wire or 3 phase, 4 wire systems.

## Fuse and Short Circuit Information

When used with Class K fuses, Class H fuses or a UL Listed Circuit Breaker rated for 10 000 amperes, RMS symmetrical, **600** volts maximum, this switch is suitable for use on a circuit capable of delivering not more than 10 000 amperes, RMS symmetrical, **600** volts, maximum.

When used with Class R fuses and Class R fuse clip kit **HR63** properly installed, this switch is suitable for use on a circuit capable of delivering not more than 200 000 amperes, RMS symmetrical, **600** volts maximum.

When used with Class J fuses with the load base relocated to the "J Fuse" position marked on the enclosure this switch is suitable for use on a circuit capable of delivering not more than 200 000 amperes, RMS symmetrical, **600** volts maximum.

When used with Class T fuses and Class T fuse adaptor kit **HT63** properly installed, this switch is suitable for use on a circuit capable of delivering not more than 200 000 amperes, RMS symmetrical, **600** volts maximum.

**Danger** – Unless Class R, J or T fuses are used, this switch may present a risk of fire and injury to persons if installed on circuits capable of delivering more than 10 000 amperes, RMS symmetrical.

When used with fuses marked with DC ratings, this switch is suitable for use on a circuit capable of delivering not more than the DC interrupting rating marked on the fuse, at the DC voltage rating marked on the fuse, up to a maximum of 10 000 amperes, **600<sup>5</sup>** volts DC.

**Danger** – Unless fuses marked for an interrupting rating of 10 000 amperes at **600<sup>5</sup>** volts DC are used, this switch may present a risk of fire and injury to persons if installed on circuits capable of delivering more than 10 000 amperes.

Renewable link fuses are not recommended.

## Terminal Information

## **USE 75°C COPPER OR ALUMINUM WIRE**

Description	Wire Range	Wire Tightening Torque <sup>3</sup>	Lug Mounting Torque <sup>3</sup>
Line, Load & Main Neutral	14-1/0 AWG	35 lb-ins. 14-10 / 40 lb-ins. 8 AWG 45 lb-ins. 6-4 AWG / 50 lb-ins. 3-1/0 AWG	80 lb-ins.
Service Ground	14-4 AWG	35 lb-ins. 14-10 / 40 lb-ins. 8 AWG 45 lb-ins. 6-4 AWG	24 lb-ins.

**UL Listed Compression Lugs (Refer to manufacturers instructions for proper installation)**

**SEE 500445D00 FOR COMPRESSION LUG TABLE**

## Accessories

Aux. Switch (1NO - 1NC)	HA161234	Neutral	HN623	Class R Fuse Kit (Rejects Class H & K Fuses)	HR63
Aux. Switch (2NO - 2NC)	HA261234	200% Neutral	HN263	Class T Fuse Kit	—
Aux. Switch (1NO - 1NC)	HA361234	Ground Lug Kit (Wire Range 14-4 AWG)	HG61234	Compression Lug Neutral Barrier	HCL623 <sup>4</sup>
Copper Lug Kit	HLC63	Fuse Puller Kit ( 3 Per Kit )	HP63	Compression Lug Mounting Kit	—

## Replacement Parts

Line Base	HFB63	Replacement Lug Kit	HL63	Load Base	HBB63
-----------	-------	---------------------	------	-----------	-------

<sup>1</sup> Use outer two poles.

<sup>2</sup> The starting current of motors more than the standard horsepower or kilowatt ratings may require the use of fuses with appropriate time delay characteristics.

<sup>3</sup> When tightening or replacing connectors, refer to lug mounting torque in Terminal & Wire Information Table.

<sup>4</sup> If compression lugs are used for the neutral, order compression lug neutral barrier kit **HCL623**.

<sup>5</sup> 600 VDC ratings apply when wired per the wiring diagram on page 2.

Protected by one or more of the following US Patents: 6,134,979, 6,356,460, 5,990,439.



Assembled in Mexico

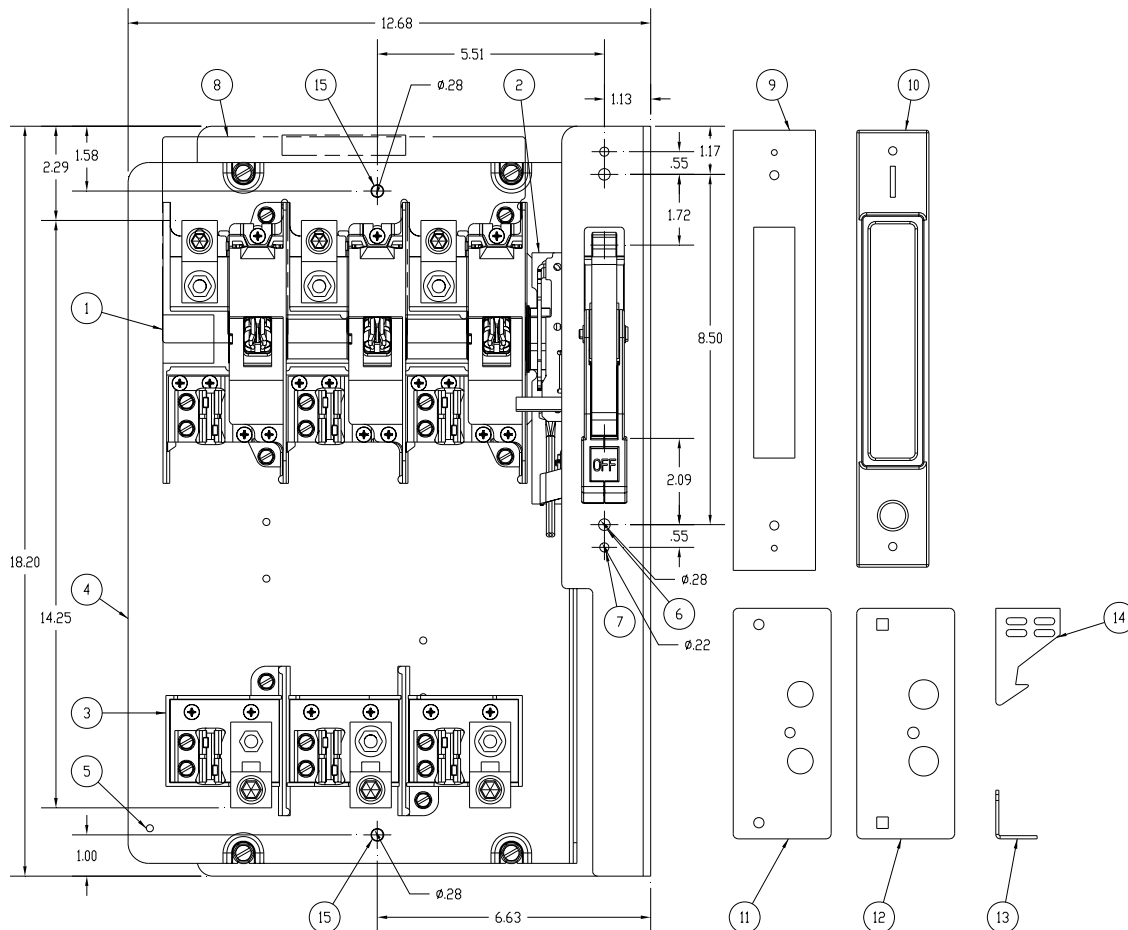
**Technical Support:**

Toll Free: 1-800-241-4453

Internet: <http://www.sea.siemens.com/power>

### Component Data Sheet

	<p><b>⚠ Danger</b></p> <p><b>Hazardous Voltage.</b> Will cause death or serious injury.</p>	<p><b>⚠ Peligro</b></p> <p><b>Tensión peligrosa.</b> Puede causar la muerte o lesiones graves.</p>	<p><b>⚠ Danger</b></p> <p><b>Tension dangereuse.</b> Danger de mort ou risque de blessures graves.</p>
	<p>Turn off and lock out all power supplying this device before working on this device. Replace all covers before power supplying this device is turned on.</p>	<p>Desenergice totalmente antes de instalar o darle servicio. Reemplace todas las barreras y cubiertas antes de energizar el interruptor.</p>	<p>Couper l'alimentation de l'appareil et barrer avant de travailler. Remplacez tous les couverts avant que l'approvisionnement de pouvoir soit alimenté.</p>



<ol style="list-style-type: none"> <li>1) Line Base Assembly (factory installed)</li> <li>2) Mechanism Assembly (factory installed)</li> <li>3) Load Base Assembly (factory installed)</li> <li>4) Mounting Pan</li> <li>5) Mounting hole for Ground Lug Kit, HG61234</li> <li>6) Flange Mounting Hole</li> <li>7) Handle Cover Mounting Hole</li> <li>8) Clear Line Shield (factory installed)</li> <li>9) Handle Gasket, required for NEMA Type 12</li> <li>10) Handle Cover Plate</li> <li>11) Door handle gasket, required for Hoffman A-xxAB enclosures or Rittal E-xxAB enclosures</li> <li>12) Door handle plate, required for Hoffman A-xxAB enclosures or Rittal E-xxAB enclosures</li> <li>13) Cover Interlock Mounting Bracket</li> <li>14) Cover Interlock</li> <li>15) Support Mounting Hole</li> </ol>	<p><b>Fasteners ( not shown )</b></p> <ol style="list-style-type: none"> <li>16) Machine screws, (2) 10-32 x 1", Handle cover plate</li> <li>17) Machine screws, (2) 1/4-20 x 3/4", Flange mounting</li> <li>18) Machine screws, (2) #8-32 X 5/16 pan head, Cover interlock</li> <li>19) Bolt, (2) 1/4-20 X 5/8, round head short square neck, Door handle plate</li> <li>20) Flat washers, (6) 1/4", Flange mounting, Door handle plate</li> <li>21) Lock washers, (2) #10, Handle cover plate</li> <li>22) Lock washers, (4) 1/4", Flange mounting, Door handle plate</li> <li>23) Lock washers, external tooth, (2) #8, Cover interlock</li> <li>24) Nut, (4) 1/4-20, Flange mounting, Door handle plate</li> <li>25) Nut, (2) 10-32, Handle cover plate</li> </ol>
--	--

# SIEMENS

**Cat. No. VBFS364F**  
**200 Amp Maximum**

**Fusible Flange Mounted Disconnect Switch**  
**Maximum 600 Volts AC (V~)**

**Type VBII**  
**Maximum 600 Volts DC (V-)**

**Suitable for use in NEMA Type 1/3R/12 enclosures**

## Horsepower Ratings

**SEE 500446AJ00 FOR HORSEPOWER TABLE**

Continuous load current not to exceed 80% of the rating of fuses employed in other than motor circuits.

Suitable for use as Service Equipment when used with ground bar kit HG61234 on 3 phase, 3 wire systems or when used with HN64 neutral kit on 1 phase, 3 wire or 3 phase, 4 wire systems.

## Fuse and Short Circuit Information

When used with Class K fuses, Class H fuses or a UL Listed Circuit Breaker rated for 10 000 amperes, RMS symmetrical, **600** volts maximum, this switch is suitable for use on a circuit capable of delivering not more than 10 000 amperes, RMS symmetrical, **600** volts, maximum.

When used with Class R fuses and Class R fuse clip kit **HR64** properly installed, this switch is suitable for use on a circuit capable of delivering not more than 200 000 amperes, RMS symmetrical, **600** volts maximum.

When used with Class J fuses with the load base relocated to the "J Fuse" position marked on the enclosure this switch is suitable for use on a circuit capable of delivering not more than 200 000 amperes, RMS symmetrical, **600** volts maximum.

When used with Class T fuses and Class T fuse adaptor kit **HT64** properly installed, this switch is suitable for use on a circuit capable of delivering not more than 200 000 amperes, RMS symmetrical, **600** volts maximum.

**Danger** – Unless Class R, J or T fuses are used, this switch may present a risk of fire and injury to persons if installed on circuits capable of delivering more than 10 000 amperes, RMS symmetrical.

When used with fuses marked with DC ratings, this switch is suitable for use on a circuit capable of delivering not more than the DC interrupting rating marked on the fuse, at the DC voltage rating marked on the fuse, up to a maximum of 10 000 amperes, **600** volts DC.

**Danger** – Unless fuses marked for an interrupting rating of 10 000 amperes at **600** volts DC are used, this switch may present a risk of fire and injury to persons if installed on circuits capable of delivering more than 10 000 amperes.

Renewable link fuses are not recommended.

## Terminal Information

## **USE 75°C COPPER OR ALUMINUM WIRE**

Description	Wire Range	Wire Tightening Torque <sup>3</sup>	Lug Mounting Torque <sup>3</sup>
Line, Load & Main Neutral	6 AWG – 300 kcmil	275 lb-ins.	135 lb-ins.
Service Ground	14-1/0 AWG	35 lb-ins. 14-10 / 40 lb-ins. 8 AWG 45 lb-ins. 6-4 AWG / 50 lb-ins. 3-1/0 AWG	80 lb-ins.

**UL Listed Compression Lugs (Refer to manufacturers instructions for proper installation)**

**SEE 500445F00 FOR COMPRESSION LUG TABLE**

## Accessories

Aux. Switch (1NO - 1NC)	HA161234	Neutral	HN64	Class R Fuse Kit (Rejects Class H & K Fuses)	HR64
Aux. Switch (2NO - 2NC)	HA261234	200% Neutral	HN264	Class T Fuse Kit	—
Aux. Switch (1NO - 1NC)	HA361234	Ground Lug Kit (Wire Range 14-4 AWG)	HG61234	Compression Lug Neutral Barrier	—
Copper Lug Kit	HLC64	Fuse Puller Kit ( 3 Per Kit )	HP63	Compression Lug Mounting Kit	—

## Replacement Parts

Line Base	HFB64	Replacement Lug Kit	HL64	Load Base	HBB64
-----------	-------	---------------------	------	-----------	-------

<sup>1</sup> Use outer two poles.

<sup>2</sup> The starting current of motors more than the standard horsepower or kilowatt ratings may require the use of fuses with appropriate time delay characteristics.

<sup>3</sup> When tightening or replacing connectors, refer to lug mounting torque in Terminal & Wire Information Table.

Assembled in Mexico

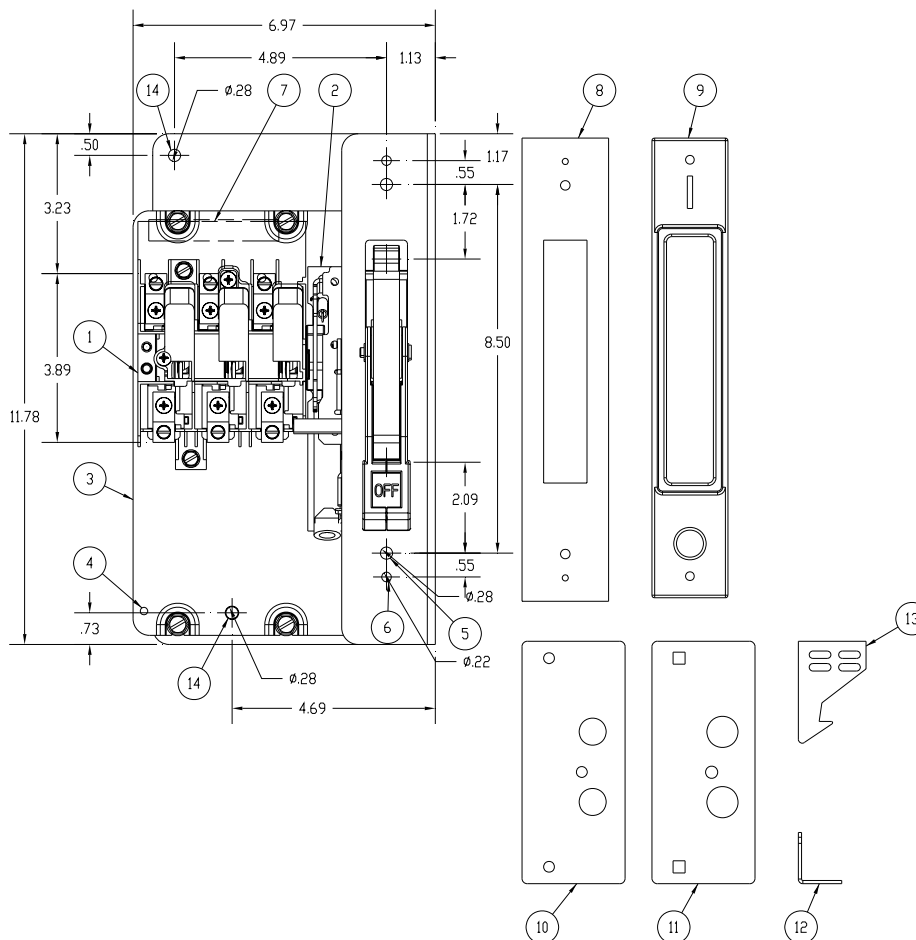
**Technical Support:**

Toll Free: 1-800-241-4453

Internet: <http://www.sea.siemens.com/power>

### Component Data Sheet

	<p><b>⚠ Danger</b></p> <p><b>Hazardous Voltage.</b> Will cause death or serious injury.</p>	<p><b>⚠ Peligro</b></p> <p><b>Tensión peligrosa.</b> Puede causar la muerte o lesiones graves.</p>	<p><b>⚠ Danger</b></p> <p><b>Tension dangereuse.</b> Danger de mort ou risque de blessures graves.</p>
	<p>Turn off and lock out all power supplying this device before working on this device. Replace all covers before power supplying this device is turned on.</p>	<p>Desenergice totalmente antes de instalar o darle servicio. Reemplace todas las barreras y cubiertas antes de energizar el interruptor.</p>	<p>Couper l'alimentation de l'appareil et barrer avant de travailler. Remplacez tous les couverts avant que l'approvisionnement de pouvoir soit alimenté.</p>

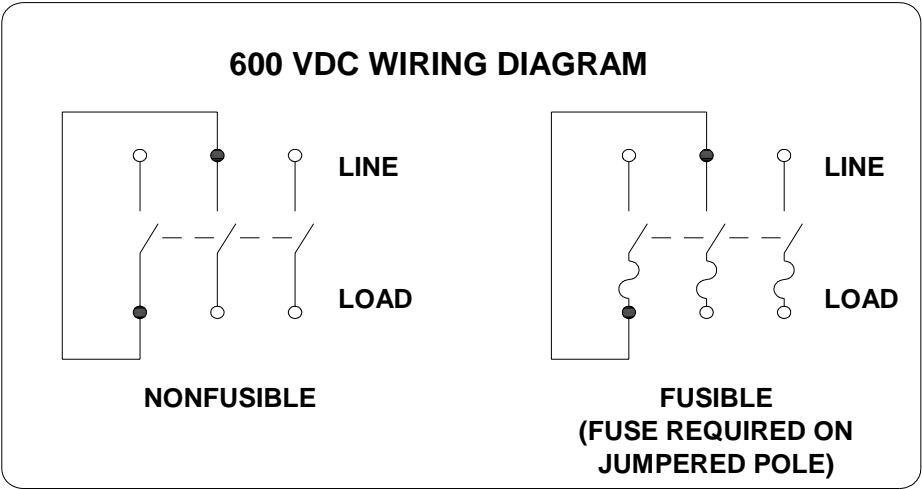


<p>1) Line Base Assembly (factory installed)</p> <p>2) Mechanism Assembly (factory installed)</p> <p>3) Mounting Pan</p> <p>4) Mounting hole for Ground Lug Kit, HG61234</p> <p>5) Flange Mounting Hole</p> <p>6) Handle Cover Mounting Hole</p> <p>7) Clear Line Shield (factory installed)</p> <p>8) Handle Gasket, required for NEMA Type 12</p> <p>9) Handle Cover Plate</p> <p>10) Door handle gasket, required for Hoffman A-xxAB enclosures or Rittal E-xxAB enclosures</p> <p>11) Door handle plate, required for Hoffman A-xxAB enclosures or Rittal E-xxAB enclosures</p> <p>12) Cover Interlock Mounting Bracket</p> <p>13) Cover Interlock</p> <p>14) Support Mounting Hole</p>	<p><b>Fasteners ( not shown )</b></p> <p>15) Machine screws, (2) 10-32 x 1", Handle cover plate</p> <p>16) Machine screws, (2) 1/4-20 x 3/4", Flange mounting</p> <p>17) Machine screws, (2) #8-32 X 5/16 pan head, Cover interlock</p> <p>18) Bolt, (2) 1/4-20 X 5/8, round head short square neck, Door handle plate</p> <p>19) Flat washers, (6) 1/4", Flange mounting, Door handle plate</p> <p>20) Lock washers, (2) #10, Handle cover plate</p> <p>21) Lock washers, (4) 1/4", Flange mounting, Door handle plate</p> <p>22) Lock washers, external tooth, (2) #8, Cover interlock</p> <p>23) Nut, (4) 1/4-20, Flange mounting, Door handle plate</p> <p>24) Nut, (2) 10-32, Handle cover plate</p>
---	---



Component Data Sheet

 	 <b>Danger</b> Hazardous Voltage. Will cause death or serious injury. Turn off and lock out all power supplying this device before working on this device. Replace all covers before power supplying this device is turned on.	 <b>Peligro</b> Tensión peligrosa. Puede causar la muerte o lesiones graves. Desenergice totalmente antes de instalar o darle servicio. Reemplace todas las barreras y cubiertas antes de energizar el interruptor.	 <b>Danger</b> Tension dangereuse. Danger de mort ou risque de blessures graves. Couper l'alimentation de l'appareil et barrer avant de travailler. Remplacez tous les couverts avant que l'approvisionnement de pouvoir soit alimenté.



# SIEMENS

**Cat. No. VBNFS361F**  
**30 Amp Maximum**  
**Suitable for use in NEMA Type 1/3R/12 enclosures**  
**Horsepower Ratings**

**Non-Fusible Flange Mounted Disconnect Switch**  
**Maximum 600 Volts AC (V~)**

**Type VBII**  
**Maximum 600<sup>4</sup> Volts DC (V-)**

**SEE 500446F00 FOR HORSEPOWER TABLE**

Suitable for use as Service Equipment when used with ground bar kit HG61234 on 3 phase, 3 wire systems or when used with HN612 neutral kit on 1 phase, 3 wire or 3 phase, 4 wire systems.

## Fuse and Short Circuit Information

This switch is suitable for use on a circuit capable of delivering not more than 200 000 amperes, RMS symmetrical, **600** volts maximum when protected by class J, R or T fuses rated **30** amperes maximum.

**Danger** – Unless Class J, R or T fuses are used to protect this switch, it may present a risk of fire and injury to persons if installed on circuits capable of delivering more than 10 000 amperes, RMS symmetrical.

This switch is suitable for use on a circuit capable of delivering not more than 10 000 amperes, RMS symmetrical, **600** volts maximum, when protected by Class K fuses, Class H fuses or a UL Listed Circuit Breaker rated for 10 000 amperes, RMS symmetrical, **600** volts maximum.

This switch is suitable for use on a circuit capable of delivering not more than 10 000 amperes, **600<sup>4</sup>** volts DC maximum, when protected by fuses marked with an interrupting rating of 10 000 amperes, **600<sup>4</sup>** volts DC.

**Danger** – Unless fuses marked for an interrupting rating of 10 000 amperes at **600<sup>4</sup>** volts DC are used to protect this switch, this switch may present a risk of fire and injury to persons if installed on circuits capable of delivering more than 10 000 amperes.

## Terminal Information

## USE 60°/75°C COPPER OR ALUMINUM WIRE

Description	Wire Range	Wire Tightening Torque <sup>2</sup>	Lug Mounting Torque <sup>2</sup>
Line, Load & Main Neutral	14-6 AWG	35 lb-ins. 14-10 / 40 lb-ins. 8 AWG 45 lb-ins. 6-4 AWG	24 lb-ins.
Service Ground	14-4 AWG	35 lb-ins. 14-10 / 40 lb-ins. 8 AWG 45 lb-ins. 6-4 AWG	24 lb-ins.

## UL Listed Compression Lugs (Refer to manufacturers instructions for proper installation)

**SEE 500445A00 FOR COMPRESSION LUG TABLE**

## Accessories

Aux. Switch (1NO - 1NC)	HA161234	Neutral	HN612	Class R Fuse Kit (Rejects Class H & K Fuses)	—
Aux. Switch (2NO - 2NC)	HA261234	200% Neutral	—	Class T Fuse Kit	—
Aux. Switch (1NO - 1NC)	HA361234	Ground Lug Kit (Wire Range 14-4 AWG)	HG61234	Compression Lug Neutral Barrier	HCL612 <sup>3</sup>
Copper Lug Kit	HLC612	Fuse Puller Kit ( 3 Per Kit )	—	Compression Lug Mounting Kit	—

## Replacement Parts

Line Base	HNB61	Replacement Lug Kit	HL612	Load Base	—
-----------	-------	---------------------	-------	-----------	---

<sup>1</sup> Use outer two poles.

<sup>2</sup> When tightening or replacing connectors, refer to lug mounting torque in Terminal & Wire Information Table.

<sup>3</sup> If compression lugs are used for the neutral, order compression lug neutral barrier kit **HCL612**.

<sup>4</sup> 600 VDC ratings apply when wired per the wiring diagram on page 2.

Protected by one or more of the following US Patents: 6,134,979, 6,356,460, 5,990,439.

Assembled in Mexico

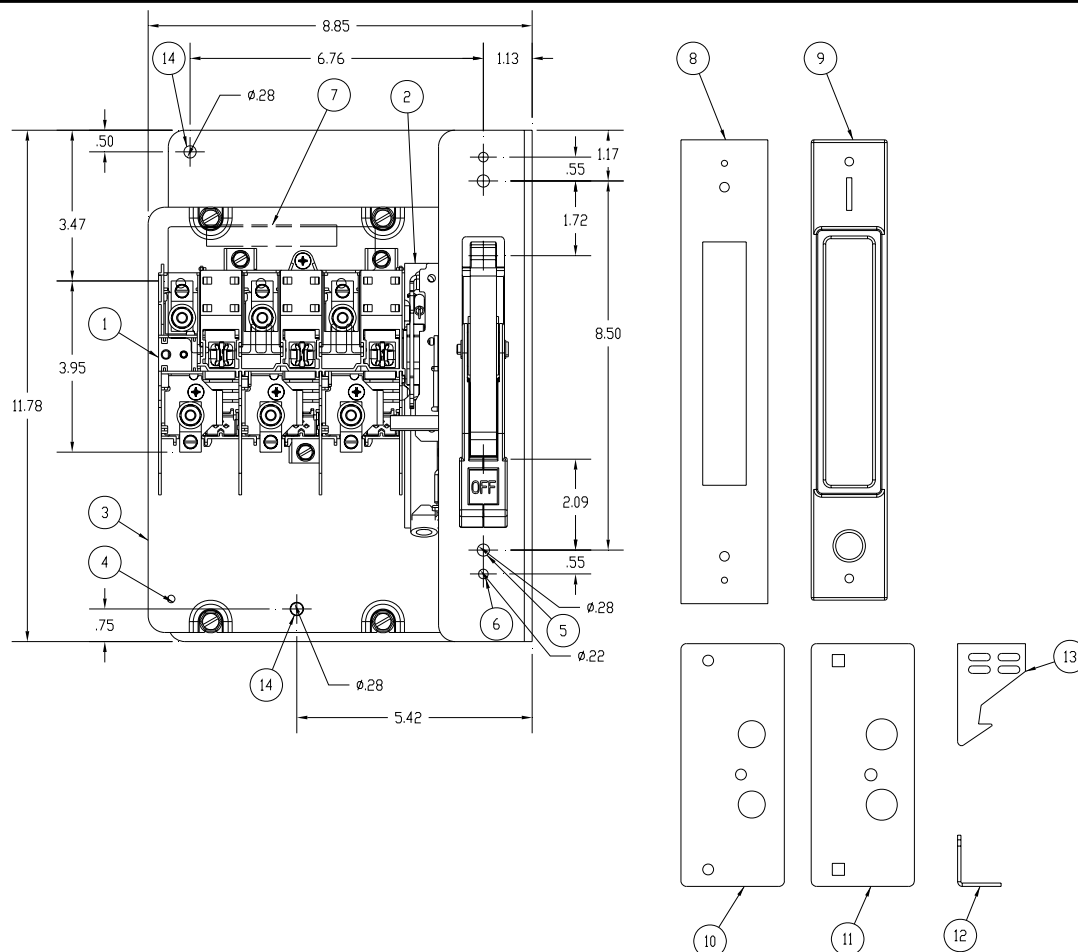
**Technical Support:**

Toll Free: 1-800-241-4453

Internet: <http://www.sea.siemens.com/power>

### Component Data Sheet

	<p><b>⚠ Danger</b></p> <p><b>Hazardous Voltage.</b> Will cause death or serious injury.</p>	<p><b>⚠ Peligro</b></p> <p><b>Tensión peligrosa.</b> Puede causar la muerte o lesiones graves.</p>	<p><b>⚠ Danger</b></p> <p><b>Tension dangereuse.</b> Danger de mort ou risque de blessures graves.</p>
	<p>Turn off and lock out all power supplying this device before working on this device. Replace all covers before power supplying this device is turned on.</p>	<p>Desenergice totalmente antes de instalar o darle servicio. Reemplace todas las barreras y cubiertas antes de energizar el interruptor.</p>	<p>Couper l'alimentation de l'appareil et barrer avant de travailler. Remplacez tous les couverts avant que l'approvisionnement de pouvoir soit alimenté.</p>



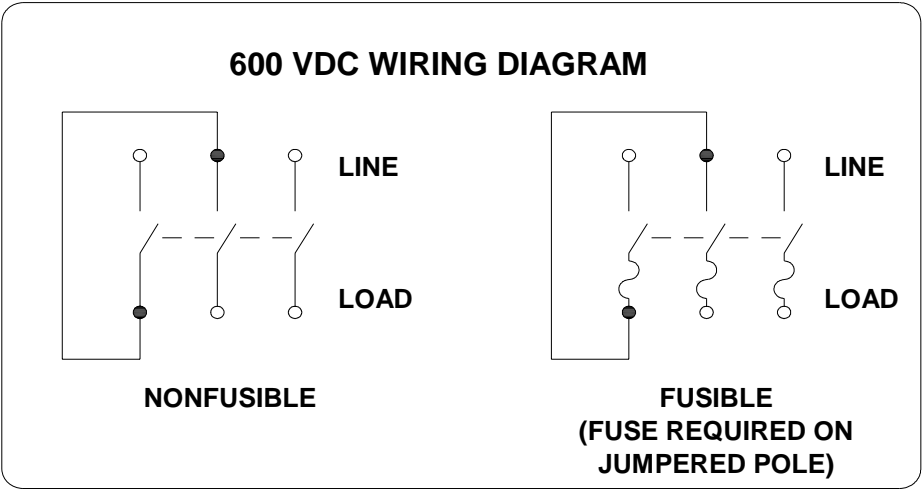
- 1) Line Base Assembly (factory installed)
- 2) Mechanism Assembly (factory installed)
- 3) Mounting Pan
- 4) Mounting hole for Ground Lug Kit, HG61234
- 5) Flange Mounting Hole
- 6) Handle Cover Mounting Hole
- 7) Clear Line Shield (factory installed)
- 8) Handle Gasket, required for NEMA Type 12
- 9) Handle Cover Plate
- 10) Door handle gasket, required for Hoffman A-xxAB enclosures or Rittal E-xxAB enclosures
- 11) Door handle plate, required for Hoffman A-xxAB enclosures or Rittal E-xxAB enclosures
- 12) Cover Interlock Mounting Bracket
- 13) Cover Interlock
- 14) Support Mounting Hole

#### Fasteners ( not shown )

- 15) Machine screws, (2) 10-32 x 1", Handle cover plate
- 16) Machine screws, (2) 1/4-20 x 3/4", Flange mounting
- 17) Machine screws, (2) #8-32 X 5/16 pan head, Cover interlock
- 18) Bolt, (2) 1/4-20 X 5/8, round head short square neck, Door handle plate
- 19) Flat washers, (6) 1/4", Flange mounting, Door handle plate
- 20) Lock washers, (2) #10, Handle cover plate
- 21) Lock washers, (4) 1/4", Flange mounting, Door handle plate
- 22) Lock washers, external tooth, (2) #8, Cover interlock
- 23) Nut, (4) 1/4-20, Flange mounting, Door handle plate
- 24) Nut, (2) 10-32, Handle cover plate

Component Data Sheet

 	 <b>Danger</b> Hazardous Voltage. Will cause death or serious injury. Turn off and lock out all power supplying this device before working on this device. Replace all covers before power supplying this device is turned on.	 <b>Peligro</b> Tensión peligrosa. Puede causar la muerte o lesiones graves. Desenergice totalmente antes de instalar o darle servicio. Reemplace todas las barreras y cubiertas antes de energizar el interruptor.	 <b>Danger</b> Tension dangereuse. Danger de mort ou risque de blessures graves. Couper l'alimentation de l'appareil et barrer avant de travailler. Remplacez tous les couverts avant que l'approvisionnement de pouvoir soit alimenté.



# SIEMENS

**Cat. No. VBNFS362F**  
**30 Amp Maximum**  
**Suitable for use in NEMA Type 1/3R/12 enclosures**  
**Horsepower Ratings**

**Non-Fusible Flange Mounted Disconnect Switch**  
**Maximum 600 Volts AC (V~)**

**Type VBII**  
**Maximum 600<sup>4</sup> Volts DC (V-)**

**SEE 500446P01 FOR HORSEPOWER TABLE**

Suitable for use as Service Equipment when used with ground bar kit HG61234 on 3 phase, 3 wire systems or when used with HN623 neutral kit on 1 phase, 3 wire or 3 phase, 4 wire systems.

## Fuse and Short Circuit Information

This switch is suitable for use on a circuit capable of delivering not more than 200 000 amperes, RMS symmetrical, **600** volts maximum when protected by class J, R or T fuses rated **60** amperes maximum.

**Danger** – Unless Class J, R or T fuses are used to protect this switch, it may present a risk of fire and injury to persons if installed on circuits capable of delivering more than 10 000 amperes, RMS symmetrical.

This switch is suitable for use on a circuit capable of delivering not more than 10 000 amperes, RMS symmetrical, **600** volts maximum, when protected by Class K fuses, Class H fuses or a UL Listed Circuit Breaker rated for 10 000 amperes, RMS symmetrical, **600** volts maximum.

This switch is suitable for use on a circuit capable of delivering not more than 10 000 amperes, **600<sup>4</sup>** volts DC maximum, when protected by fuses marked with an interrupting rating of 10 000 amperes, **600<sup>4</sup>** volts DC.

**Danger** – Unless fuses marked for an interrupting rating of 10 000 amperes at **600<sup>4</sup>** volts DC are used to protect this switch, this switch may present a risk of fire and injury to persons if installed on circuits capable of delivering more than 10 000 amperes.

## Terminal Information

## USE 60°/75°C COPPER OR ALUMINUM WIRE

Description	Wire Range	Wire Tightening Torque <sup>2</sup>	Lug Mounting Torque <sup>2</sup>
Line, Load & Main Neutral	14-2 AWG	35 lb-ins. 14-10 / 40 lb-ins. 8 AWG 45 lb-ins. 6-4 AWG / 50 lb-ins. 3-2 AWG	80 lb-ins.
Service Ground	14-4 AWG	35 lb-ins. 14-10 / 40 lb-ins. 8 AWG 45 lb-ins. 6-4 AWG	24 lb-ins.

## UL Listed Compression Lugs (Refer to manufacturers instructions for proper installation)

**SEE 500445C00 FOR COMPRESSION LUG TABLE**

## Accessories

Aux. Switch (1NO - 1NC)	HA161234	Neutral	HN623	Class R Fuse Kit (Rejects Class H & K Fuses)	—
Aux. Switch (2NO - 2NC)	HA261234	200% Neutral	—	Class T Fuse Kit	—
Aux. Switch (1NO - 1NC)	HA361234	Ground Lug Kit (Wire Range 14-4 AWG)	HG61234	Compression Lug Neutral Barrier	HCL623 <sup>3</sup>
Copper Lug Kit	HLC612	Fuse Puller Kit (3 Per Kit)	—	Compression Lug Mounting Kit	—

## Replacement Parts

Line Base	HNB62	Replacement Lug Kit	HL612	Load Base	—
-----------	-------	---------------------	-------	-----------	---

<sup>1</sup> Use outer two poles.

<sup>2</sup> When tightening or replacing connectors, refer to lug mounting torque in Terminal & Wire Information Table.

<sup>3</sup> If compression lugs are used for the neutral, order compression lug neutral barrier kit **HCL623**.

<sup>4</sup> 600 VDC ratings apply when wired per the wiring diagram on page 2.

Protected by one or more of the following US Patents: 6,134,979, 6,356,460, 5,990,439.

Assembled in Mexico

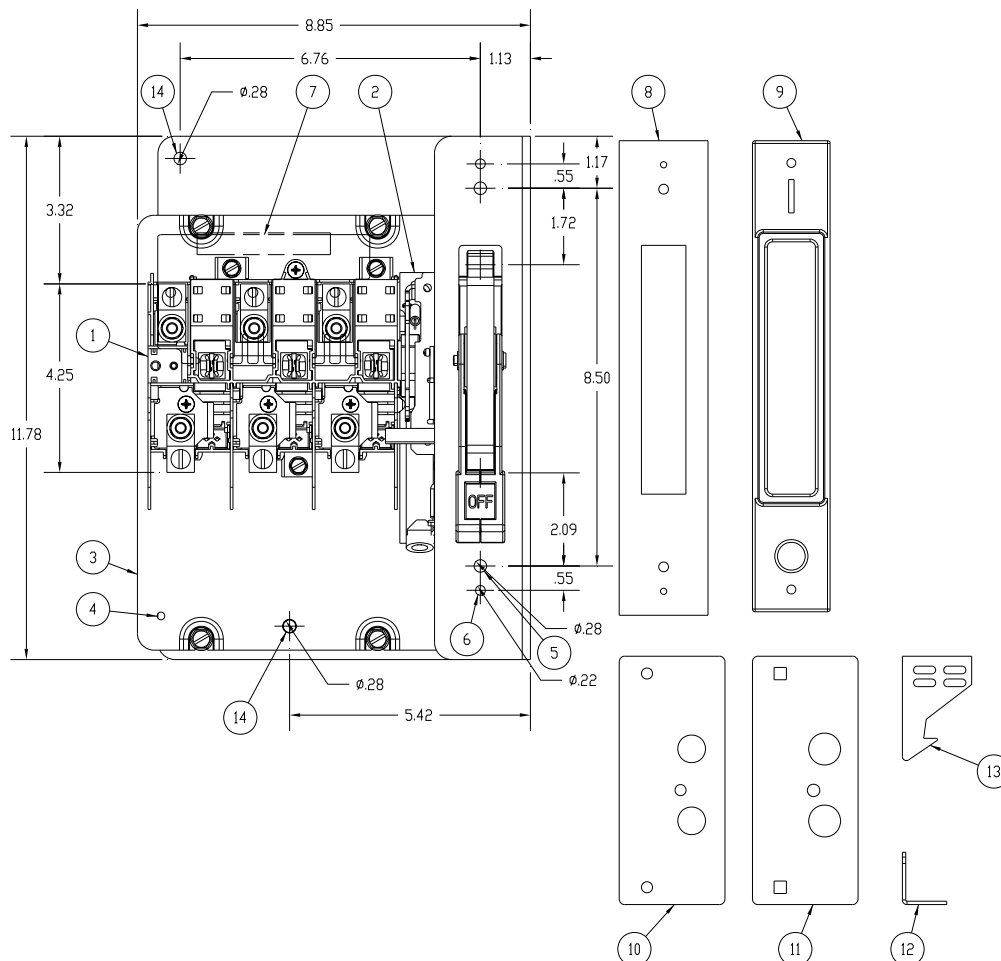
**Technical Support:**

Toll Free: 1-800-241-4453

Internet: <http://www.sea.siemens.com/power>

### Component Data Sheet

	<p><b>⚠ Danger</b></p> <p><b>Hazardous Voltage.</b> Will cause death or serious injury.</p>	<p><b>⚠ Peligro</b></p> <p><b>Tensión peligrosa.</b> Puede causar la muerte o lesiones graves.</p>	<p><b>⚠ Danger</b></p> <p><b>Tension dangereuse.</b> Danger de mort ou risque de blessures graves.</p>
	<p>Turn off and lock out all power supplying this device before working on this device. Replace all covers before power supplying this device is turned on.</p>	<p>Desenergice totalmente antes de instalar o darle servicio. Reemplace todas las barreras y cubiertas antes de energizar el interruptor.</p>	<p>Couper l'alimentation de l'appareil et barrer avant de travailler. Remplacez tous les couverts avant que l'approvisionnement de pouvoir soit alimenté.</p>



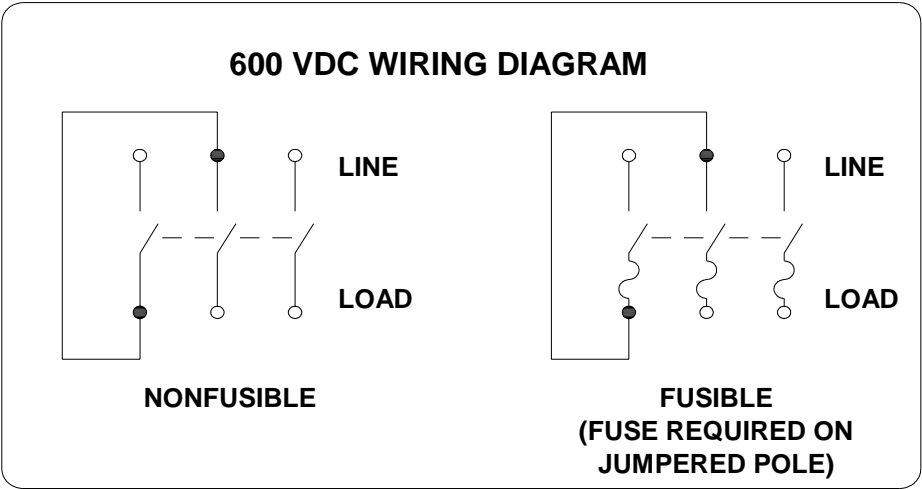
- 1) Line Base Assembly (factory installed)
- 2) Mechanism Assembly (factory installed)
- 3) Mounting Pan
- 4) Mounting hole for Ground Lug Kit, HG61234
- 5) Flange Mounting Hole
- 6) Handle Cover Mounting Hole
- 7) Clear Line Shield (factory installed)
- 8) Handle Gasket, required for NEMA Type 12
- 9) Handle Cover Plate
- 10) Door handle gasket, required for Hoffman A-xxAB enclosures or Rittal E-xxAB enclosures
- 11) Door handle plate, required for Hoffman A-xxAB enclosures or Rittal E-xxAB enclosures
- 12) Cover Interlock Mounting Bracket
- 13) Cover Interlock
- 14) Support Mounting Hole

#### Fasteners ( not shown )

- 15) Machine screws, (2) 10-32 x 1", Handle cover plate
- 16) Machine screws, (2) 1/4-20 x 3/4", Flange mounting
- 17) Machine screws, (2) #8-32 X 5/16 pan head, Cover interlock
- 18) Bolt, (2) 1/4-20 X 5/8, round head short square neck, Door handle plate
- 19) Flat washers, (6) 1/4", Flange mounting, Door handle plate
- 20) Lock washers, (2) #10, Handle cover plate
- 21) Lock washers, (4) 1/4", Flange mounting, Door handle plate
- 22) Lock washers, external tooth, (2) #8, Cover interlock
- 23) Nut, (4) 1/4-20, Flange mounting, Door handle plate
- 24) Nut, (2) 10-32, Handle cover plate

Component Data Sheet

 	 <b>Danger</b> Hazardous Voltage. Will cause death or serious injury. Turn off and lock out all power supplying this device before working on this device. Replace all covers before power supplying this device is turned on.	 <b>Peligro</b> Tensión peligrosa. Puede causar la muerte o lesiones graves. Desenergice totalmente antes de instalar o darle servicio. Reemplace todas las barreras y cubiertas antes de energizar el interruptor.	 <b>Danger</b> Tension dangereuse. Danger de mort ou risque de blessures graves. Couper l'alimentation de l'appareil et barrer avant de travailler. Remplacez tous les couverts avant que l'approvisionnement de pouvoir soit alimenté.



# SIEMENS

**Cat. No. VBNFS363F**  
**100 Amp Maximum**  
**Suitable for use in NEMA Type 1/3R/12 enclosures**  
**Horsepower Ratings**

**Non-Fusible Flange Mounted Disconnect Switch**  
**Maximum 600 Volts AC (V~)**

**Type VBII**  
**Maximum 600<sup>4</sup> Volts DC (V-)**

**SEE 500446AB01 FOR HORSEPOWER TABLE**

Suitable for use as Service Equipment when used with ground bar kit HG61234 on 3 phase, 3 wire systems or when used with HN623 neutral kit on 1 phase, 3 wire or 3 phase, 4 wire systems.

## Fuse and Short Circuit Information

This switch is suitable for use on a circuit capable of delivering not more than 200 000 amperes, RMS symmetrical, **600** volts maximum when protected by class J, R or T fuses rated **100** amperes maximum.

**Danger** – Unless Class J, R or T fuses are used to protect this switch, it may present a risk of fire and injury to persons if installed on circuits capable of delivering more than 10 000 amperes, RMS symmetrical.

This switch is suitable for use on a circuit capable of delivering not more than 10 000 amperes, RMS symmetrical, **600** volts maximum, when protected by Class K fuses, Class H fuses or a UL Listed Circuit Breaker rated for 10 000 amperes, RMS symmetrical, **600** volts maximum.

This switch is suitable for use on a circuit capable of delivering not more than 10 000 amperes, **600<sup>4</sup>** volts DC maximum, when protected by fuses marked with an interrupting rating of 10 000 amperes, **600<sup>4</sup>** volts DC.

**Danger** – Unless fuses marked for an interrupting rating of 10 000 amperes at **600<sup>4</sup>** volts DC are used to protect this switch, this switch may present a risk of fire and injury to persons if installed on circuits capable of delivering more than 10 000 amperes.

## Terminal Information

## USE 75°C COPPER OR ALUMINUM WIRE

Description	Wire Range	Wire Tightening Torque <sup>2</sup>	Lug Mounting Torque <sup>2</sup>
Line, Load & Main Neutral	14-1/0 AWG	35 lb-ins. 14-10 / 40 lb-ins. 8 AWG 45 lb-ins. 6-4 AWG / 50 lb-ins. 3-1/0 AWG	80 lb-ins.
Service Ground	14-4 AWG	35 lb-ins. 14-10 / 40 lb-ins. 8 AWG 45 lb-ins. 6-4 AWG	24 lb-ins.

## UL Listed Compression Lugs (Refer to manufacturers instructions for proper installation)

**SEE 500445D00 FOR COMPRESSION LUG TABLE**

## Accessories

Aux. Switch (1NO - 1NC)	HA161234	Neutral	HN623	Class R Fuse Kit (Rejects Class H & K Fuses)	—
Aux. Switch (2NO - 2NC)	HA261234	200% Neutral	HN263	Class T Fuse Kit	—
Aux. Switch (1NO - 1NC)	HA361234	Ground Lug Kit (Wire Range 14-4 AWG)	HG61234	Compression Lug Neutral Barrier	HCL623 <sup>3</sup>
Copper Lug Kit	HLC63	Fuse Puller Kit ( 3 Per Kit )	—	Compression Lug Mounting Kit	—

## Replacement Parts

Line Base	HNB63	Replacement Lug Kit	HL63	Load Base	—
-----------	-------	---------------------	------	-----------	---

<sup>1</sup> Use outer two poles.

<sup>2</sup> When tightening or replacing connectors, refer to lug mounting torque in Terminal & Wire Information Table.

<sup>3</sup> If compression lugs are used for the neutral, order compression lug neutral barrier kit **HCL623**.

<sup>4</sup> 600 VDC ratings apply when wired per the wiring diagram on page 2.

Protected by one or more of the following US Patents: 6,134,979, 6,356,460, 5,990,439.

Assembled in Mexico

**Technical Support:**

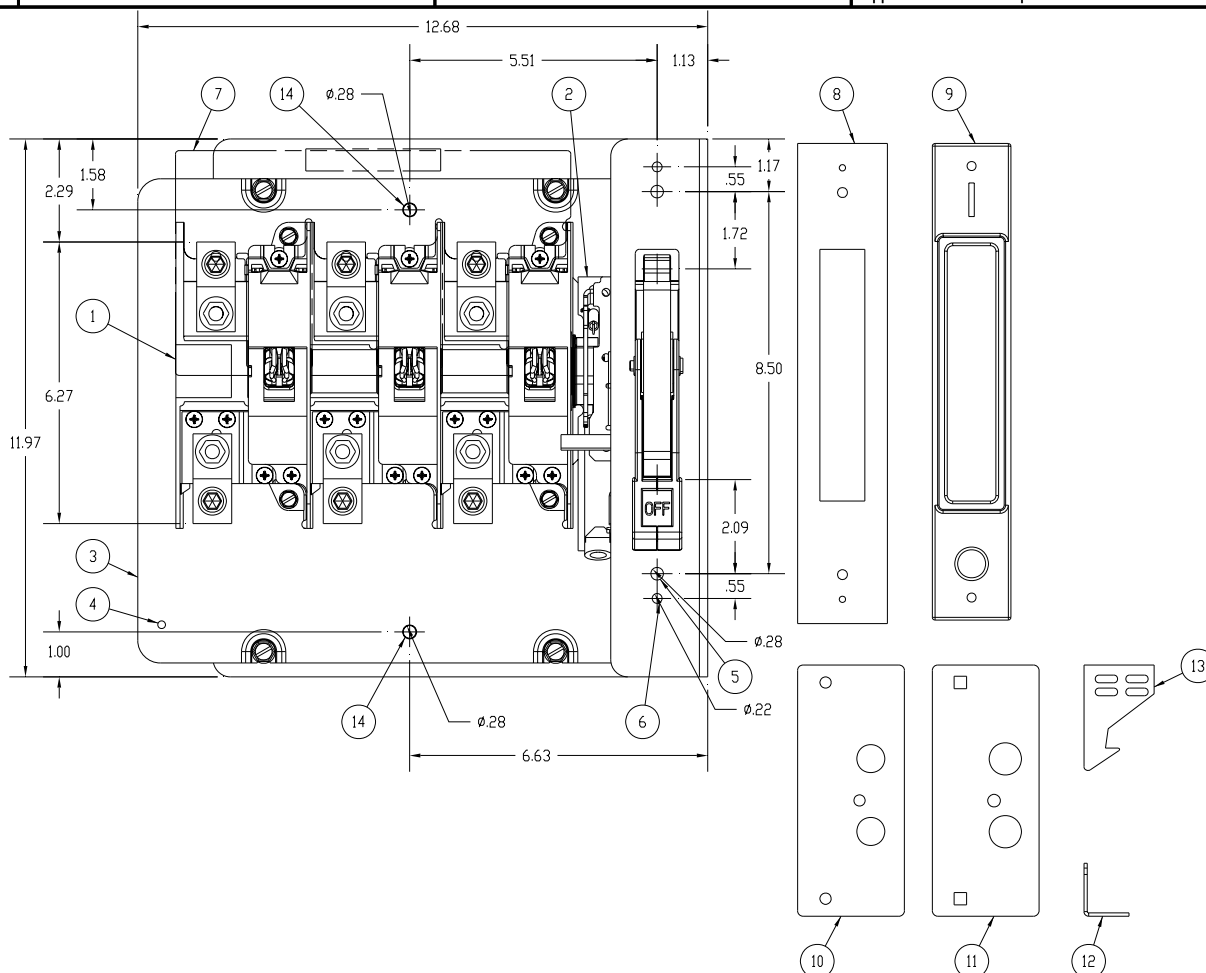
Toll Free: 1-800-241-4453

Internet: <http://www.sea.siemens.com/power>



### Component Data Sheet

	<p><b>⚠ Danger</b></p> <p><b>Hazardous Voltage.</b> Will cause death or serious injury.</p>	<p><b>⚠ Peligro</b></p> <p><b>Tensión peligrosa.</b> Puede causar la muerte o lesiones graves.</p>	<p><b>⚠ Danger</b></p> <p><b>Tension dangereuse.</b> Danger de mort ou risque de blessures graves.</p>
	<p>Turn off and lock out all power supplying this device before working on this device. Replace all covers before power supplying this device is turned on.</p>	<p>Desenergice totalmente antes de instalar o darle servicio. Reemplace todas las barreras y cubiertas antes de energizar el interruptor.</p>	<p>Couper l'alimentation de l'appareil et barrer avant de travailler. Remplacez tous les couverts avant que l'approvisionnement de pouvoir soit alimenté.</p>



- 1) Line Base Assembly (factory installed)
- 2) Mechanism Assembly (factory installed)
- 3) Mounting Pan
- 4) Mounting hole for Ground Lug Kit, HG61234
- 5) Flange Mounting Hole
- 6) Handle Cover Mounting Hole
- 7) Clear Line Shield (factory installed)
- 8) Handle Gasket, required for NEMA Type 12
- 9) Handle Cover Plate
- 10) Door handle gasket, required for Hoffman A-xxAB enclosures or Rittal E-xxAB enclosures
- 11) Door handle plate, required for Hoffman A-xxAB enclosures or Rittal E-xxAB enclosures
- 12) Cover Interlock Mounting Bracket
- 13) Cover Interlock
- 14) Support Mounting Hole

#### Fasteners ( not shown )

- 15) Machine screws, (2) 10-32 x 1", Handle cover plate
- 16) Machine screws, (2) 1/4-20 x 3/4", Flange mounting
- 17) Machine screws, (2) #8-32 X 5/16 pan head, Cover interlock
- 18) Bolt, (2) 1/4-20 X 5/8, round head short square neck, Door handle plate
- 19) Flat washers, (6) 1/4", Flange mounting, Door handle plate
- 20) Lock washers, (2) #10, Handle cover plate
- 21) Lock washers, (4) 1/4", Flange mounting, Door handle plate
- 22) Lock washers, external tooth, (2) #8, Cover interlock
- 23) Nut, (4) 1/4-20, Flange mounting, Door handle plate
- 24) Nut, (2) 10-32, Handle cover plate

# SIEMENS

**Cat. No. VBNFS364F**  
**200 Amp Maximum**  
**Suitable for use in NEMA Type 1/3R/12 enclosures**  
**Horsepower Ratings**

**Non-Fusible Flange Mounted Disconnect Switch**  
**Maximum 600 Volts AC (V~)**

**Type VBII**  
**Maximum 600 Volts DC (V-)**

**SEE 500446AJ00 FOR HORSEPOWER TABLE**

Suitable for use as Service Equipment when used with ground bar kit HG61234 on 3 phase, 3 wire systems or when used with HN64 neutral kit on 1 phase, 3 wire or 3 phase, 4 wire systems.

## Fuse and Short Circuit Information

This switch is suitable for use on a circuit capable of delivering not more than 200 000 amperes, RMS symmetrical, **600** volts maximum when protected by class J, R or T fuses rated **200** amperes maximum.

**Danger** – Unless Class J, R or T fuses are used to protect this switch, it may present a risk of fire and injury to persons if installed on circuits capable of delivering more than 10 000 amperes, RMS symmetrical.

This switch is suitable for use on a circuit capable of delivering not more than 10 000 amperes, RMS symmetrical, **600** volts maximum, when protected by Class K fuses, Class H fuses or a UL Listed Circuit Breaker rated for 10 000 amperes, RMS symmetrical, **600** volts maximum.

This switch is suitable for use on a circuit capable of delivering not more than 10 000 amperes, **600** volts DC maximum, when protected by fuses marked with an interrupting rating of 10 000 amperes, **600** volts DC.

**Danger** – Unless fuses marked for an interrupting rating of 10 000 amperes at **600** volts DC are used to protect this switch, this switch may present a risk of fire and injury to persons if installed on circuits capable of delivering more than 10 000 amperes.

## Terminal Information

## USE 75°C COPPER OR ALUMINUM WIRE

Description	Wire Range	Wire Tightening Torque <sup>2</sup>	Lug Mounting Torque <sup>2</sup>
Line, Load & Main Neutral	6 AWG – 300 kcmil	275 lb-ins.	135 lb-ins.
Service Ground	14-1/0 AWG	35 lb-ins. 14-10 / 40 lb-ins. 8 AWG 45 lb-ins. 6-4 AWG / 50 lb-ins. 3-1/0 AWG	80 lb-ins.

**UL Listed Compression Lugs (Refer to manufacturers instructions for proper installation)**

**SEE 500445F00 FOR COMPRESSION LUG TABLE**

## Accessories

Aux. Switch (1NO - 1NC)	HA161234	Neutral	HN64	Class R Fuse Kit (Rejects Class H & K Fuses)	—
Aux. Switch (2NO - 2NC)	HA261234	200% Neutral	HN264	Class T Fuse Kit	—
Aux. Switch (1NO - 1NC)	HA361234	Ground Lug Kit (Wire Range 14-4 AWG)	HG61234	Compression Lug Neutral Barrier	—
Copper Lug Kit	HLC64	Fuse Puller Kit ( 3 Per Kit )	—	Compression Lug Mounting Kit	—

## Replacement Parts

Line Base	HNB64	Replacement Lug Kit	HL64	Load Base	—
-----------	-------	---------------------	------	-----------	---

<sup>1</sup> Use outer two poles.

<sup>2</sup> When tightening or replacing connectors, refer to lug mounting torque in Terminal & Wire Information Table.

Protected by one or more of the following US Patents: 6,134,979, 6,356,460, 5,990,439.

Assembled in Mexico

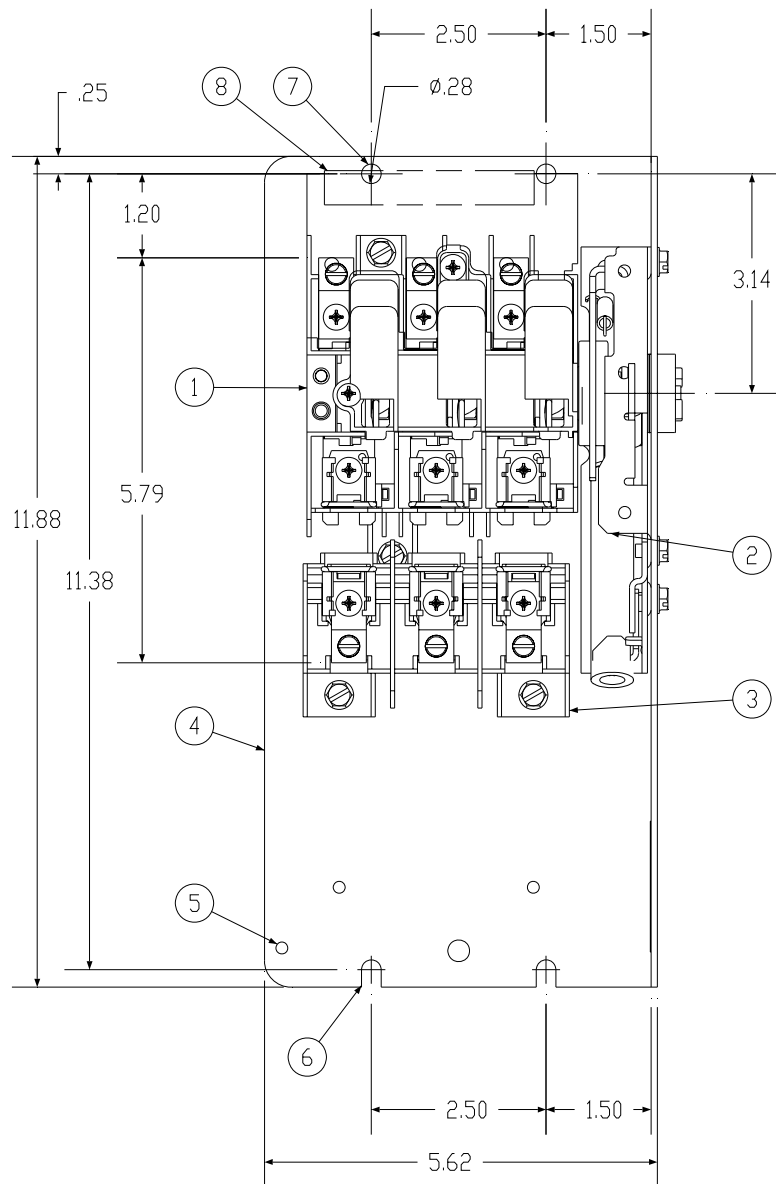
**Technical Support:**

Toll Free: 1-800-241-4453

Internet: <http://www.sea.siemens.com/power>

## Component Data Sheet

	 <b>Danger</b>	 <b>Peligro</b>	 <b>Danger</b>
	<p><b>Hazardous Voltage.</b> <b>Will cause death or serious injury.</b></p> <p>Turn off and lock out all power supplying this device before working on this device. Replace all covers before power supplying this device is turned on.</p>	<p><b>Tensión peligrosa.</b> <b>Puede causar la muerte o lesiones graves.</b></p> <p>Desenergice totalmente antes de instalar o darle servicio. Reemplace todas las barreras y cubiertas antes de energizar el interruptor.</p>	<p><b>Tension dangereuse.</b> <b>Danger de mort ou risque de blessures graves.</b></p> <p>Couper l'alimentation de l'appareil et barrer avant de travailler. Remplacez tous les couverts avant que l'approvisionnement de pouvoir soit alimenté.</p>



<p>1) Line Base Assembly (factory installed)</p> <p>2) Mechanism Assembly (factory installed)</p> <p>3) Load Base Assembly (factory installed)</p> <p>4) Mounting Pan</p> <p>5) Mounting hole for Ground Lug Kit, HG61234</p>	<p>6) Slotted Mounting Hole</p> <p>7) Mounting Hole</p> <p>8) Clear Line Shield (factory installed)</p> <p>9) Pan Mounting Screws, (4) 1/4-20 X 1/2" ( not shown )</p>
---	--

# SIEMENS

**Cat. No. VBFS321**  
**30 Amp Maximum**

**Fusible Panel Mounted Disconnect Switch**  
**Maximum 240 Volts AC (V~)**

**Type VBII**  
**Maximum 250 Volts DC (V-)**

**Suitable for use in NEMA Type 1/3R/4X/12 enclosures**

## Horsepower Ratings

**SEE 500446A00 FOR HORSEPOWER TABLE**

**Continuous load current not to exceed 80% of the rating of fuses employed in other than motor circuits.**

**Suitable for use as Service Equipment when used with ground bar kit HG61234 on 3 phase, 3 wire systems or when used with HN612 neutral kit on 1 phase, 3 wire or 3 phase, 4 wire systems.**

## Fuse and Short Circuit Information

When used with Class K fuses, Class H fuses or a UL Listed Circuit Breaker rated for 10 000 amperes, RMS symmetrical, **240** volts maximum, this switch is suitable for use on a circuit capable of delivering not more than 10 000 amperes, RMS symmetrical, **240** volts, maximum.

When used with Class R fuses and Class R fuse clip kit **HR612** properly installed, this switch is suitable for use on a circuit capable of delivering not more than 200 000 amperes, RMS symmetrical, **240** volts maximum.

**Danger** – Unless Class R fuses are used, this switch may present a risk of fire and injury to persons if installed on circuits capable of delivering more than 10 000 amperes, RMS symmetrical.

When used with fuses marked with DC ratings, this switch is suitable for use on a circuit capable of delivering not more than the DC interrupting rating marked on the fuse, at the DC voltage rating marked on the fuse, up to a maximum of 10 000 amperes, **250** volts DC.

**Danger** – Unless fuses marked for an interrupting rating of 10 000 amperes at **250** volts DC are used, this switch may present a risk of fire and injury to persons if installed on circuits capable of delivering more than 10 000 amperes.

Renewable link fuses are not recommended.

## Terminal Information

## **USE 60°/75°C COPPER OR ALUMINUM WIRE**

Description	Wire Range	Wire Tightening Torque <sup>3</sup>	Lug Mounting Torque <sup>3</sup>
Line, Load & Main Neutral	14-6 AWG	35 lb-ins. 14-10 / 40 lb-ins. 8 AWG 45 lb-ins. 6-4 AWG	24 lb-ins.
Service Ground	14-4 AWG	35 lb-ins. 14-10 / 40 lb-ins. 8 AWG 45 lb-ins. 6-4 AWG	24 lb-ins.

## **UL Listed Compression Lugs (Refer to manufacturers instructions for proper installation)**

**SEE 500445A00 FOR COMPRESSION LUG TABLE**

## Accessories

Aux. Switch (1NO - 1NC)	HA161234	Neutral	HN612	Class R Fuse Kit (Rejects Class H & K Fuses)	HR612
Aux. Switch (2NO - 2NC)	HA261234	200% Neutral	—	Class T Fuse Kit	—
Aux. Switch (1NO - 1NC)	HA361234	Ground Lug Kit (Wire Range 14-4 AWG)	HG61234	Compression Lug Neutral Barrier	HCL612 <sup>4</sup>
Copper Lug Kit	HLC612	Fuse Puller Kit ( 3 Per Kit )	HP61	Compression Lug Mounting Kit	—

## Replacement Parts

Line Base	HFB21	Replacement Lug Kit	HL612	Load Base	HBB21
-----------	-------	---------------------	-------	-----------	-------

<sup>1</sup> Use outer two poles.

<sup>2</sup> The starting current of motors more than the standard horsepower or kilowatt ratings may require the use of fuses with appropriate time delay characteristics.

<sup>3</sup> When tightening or replacing connectors, refer to lug mounting torque in Terminal & Wire Information Table.

<sup>4</sup> If compression lugs are used for the neutral, order compression lug neutral barrier kit **HCL612**.

Protected by one or more of the following US Patents: 6,134,979, 6,356,460, 5,990,439.

Assembled in Mexico

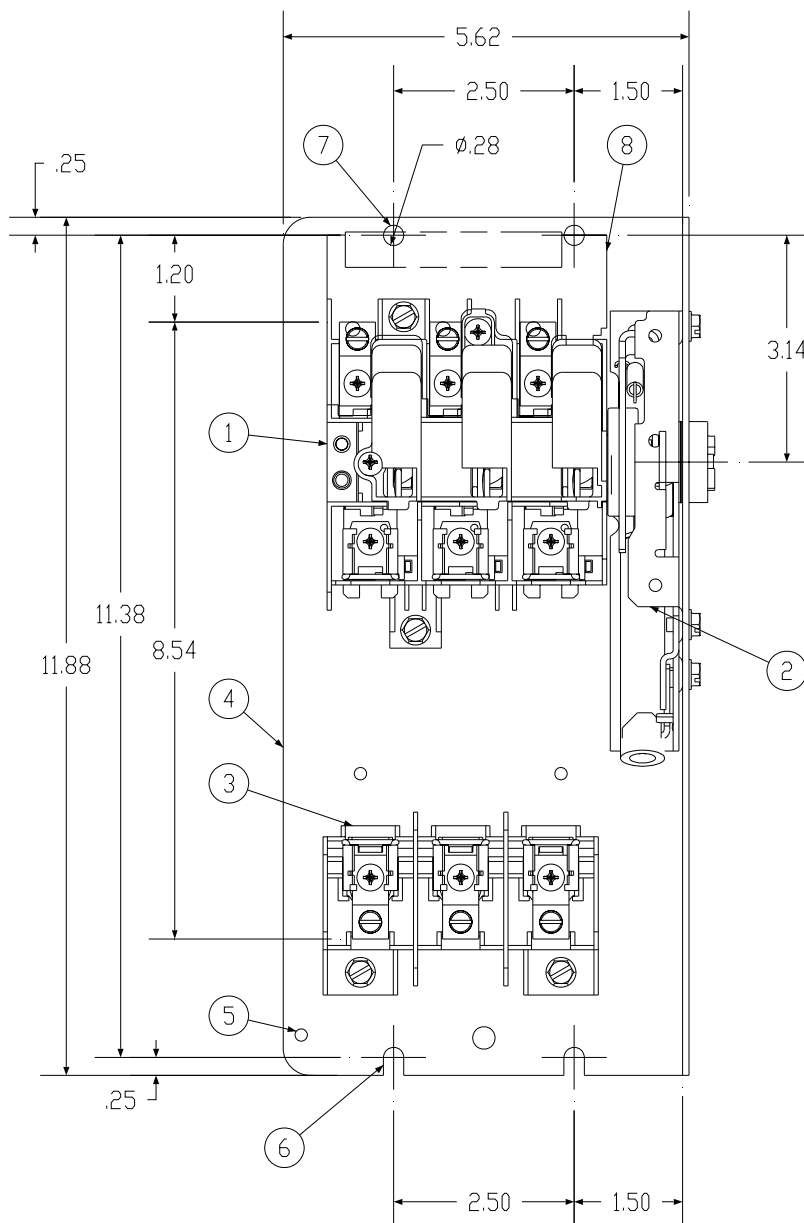
## **Technical Support:**

Toll Free: 1-800-241-4453

Internet: <http://www.sea.siemens.com/power>

### Component Data Sheet

	<p><b>⚠ Danger</b></p> <p><b>Hazardous Voltage.</b> Will cause death or serious injury.</p>	<p><b>⚠ Peligro</b></p> <p><b>Tensión peligrosa.</b> Puede causar la muerte o lesiones graves.</p>	<p><b>⚠ Danger</b></p> <p><b>Tension dangereuse.</b> Danger de mort ou risque de blessures graves.</p>
	<p>Turn off and lock out all power supplying this device before working on this device. Replace all covers before power supplying this device is turned on.</p>	<p>Desenergice totalmente antes de instalar o darle servicio. Reemplace todas las barreras y cubiertas antes de energizar el interruptor.</p>	<p>Couper l'alimentation de l'appareil et barrer avant de travailler. Remplacez tous les couverts avant que l'approvisionnement de pouvoir soit alimenté.</p>

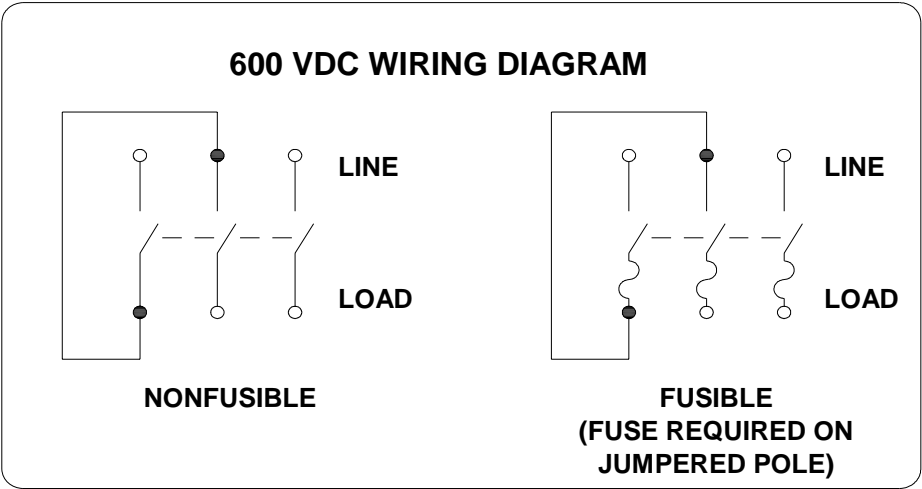


- 1) Line Base Assembly (factory installed)
- 2) Mechanism Assembly (factory installed)
- 3) Load Base Assembly (factory installed)
- 4) Mounting Pan
- 5) Mounting hole for Ground Lug Kit, HG61234

- 6) Slotted Mounting Hole
- 7) Mounting Hole
- 8) Clear Line Shield (factory installed)
- 9) Pan Mounting Screws, (4) 1/4-20 X 1/2" ( not shown )

Component Data Sheet

	 <b>Danger</b>	 <b>Peligro</b>	 <b>Danger</b>
	<p><b>Hazardous Voltage.</b> Will cause death or serious injury.</p> <p>Turn off and lock out all power supplying this device before working on this device. Replace all covers before power supplying this device is turned on.</p>	<p><b>Tensión peligrosa.</b> Puede causar la muerte o lesiones graves.</p> <p>Desenergice totalmente antes de instalar o darle servicio. Reemplace todas las barreras y cubiertas antes de energizar el interruptor.</p>	<p><b>Tension dangereuse.</b> Danger de mort ou risque de blessures graves.</p> <p>Couper l'alimentation de l'appareil et barrer avant de travailler. Remplacez tous les couverts avant que l'approvisionnement de pouvoir soit alimenté.</p>



# SIEMENS

**Cat. No. VBFS361**  
**30 Amp Maximum**

**Fusible Panel Mounted Disconnect Switch**  
**Maximum 600 Volts AC (V~)**

**Type VBII**  
**Maximum 600<sup>5</sup> Volts DC (V-)**

**Suitable for use in NEMA Type 1/3R/4X/12 enclosures**

## Horsepower Ratings

**SEE 500446E00 FOR HORSEPOWER TABLE**

Continuous load current not to exceed 80% of the rating of fuses employed in other than motor circuits.

Suitable for use as Service Equipment when used with ground bar kit HG61234 on 3 phase, 3 wire systems or when used with HN612 neutral kit on 1 phase, 3 wire or 3 phase, 4 wire systems.

## Fuse and Short Circuit Information

When used with Class K fuses, Class H fuses or a UL Listed Circuit Breaker rated for 10 000 amperes, RMS symmetrical, 600 volts maximum, this switch is suitable for use on a circuit capable of delivering not more than 10 000 amperes, RMS symmetrical, 600 volts, maximum.

When used with Class R fuses and Class R fuse clip kit HR612 properly installed, this switch is suitable for use on a circuit capable of delivering not more than 200 000 amperes, RMS symmetrical, 600 volts maximum.

When used with Class J fuses with the load base relocated to the "J Fuse" position marked on the enclosure this switch is suitable for use on a circuit capable of delivering not more than 200 000 amperes, RMS symmetrical, 600 volts maximum.

**Danger** – Unless Class R or J fuses are used, this switch may present a risk of fire and injury to persons if installed on circuits capable of delivering more than 10 000 amperes, RMS symmetrical.

When used with fuses marked with DC ratings, this switch is suitable for use on a circuit capable of delivering not more than the DC interrupting rating marked on the fuse, at the DC voltage rating marked on the fuse, up to a maximum of 10 000 amperes, 600<sup>5</sup> volts DC.

**Danger** – Unless fuses marked for an interrupting rating of 10 000 amperes at 600<sup>5</sup> volts DC are used, this switch may present a risk of fire and injury to persons if installed on circuits capable of delivering more than 10 000 amperes.

Renewable link fuses are not recommended.

## Terminal Information

## **USE 60°/75°C COPPER OR ALUMINUM WIRE**

Description	Wire Range	Wire Tightening Torque <sup>3</sup>	Lug Mounting Torque <sup>3</sup>
Line, Load & Main Neutral	14-6 AWG	35 lb-ins. 14-10 / 40 lb-ins. 8 AWG 45 lb-ins. 6-4 AWG	24 lb-ins.
Service Ground	14-4 AWG	35 lb-ins. 14-10 / 40 lb-ins. 8 AWG 45 lb-ins. 6-4 AWG	24 lb-ins.

## **UL Listed Compression Lugs (Refer to manufacturers instructions for proper installation)**

**SEE 500445A00 FOR COMPRESSION LUG TABLE**

## Accessories

Aux. Switch (1NO - 1NC)	HA161234	Neutral	HN612	Class R Fuse Kit (Rejects Class H & K Fuses)	HR612
Aux. Switch (2NO - 2NC)	HA261234	200% Neutral	—	Class T Fuse Kit	—
Aux. Switch (1NO - 1NC)	HA361234	Ground Lug Kit (Wire Range 14-4 AWG)	HG61234	Compression Lug Neutral Barrier	HCL612 <sup>4</sup>
Copper Lug Kit	HLC612	Fuse Puller Kit ( 3 Per Kit )	HP61	Compression Lug Mounting Kit	—

## Replacement Parts

Line Base	HFB61	Replacement Lug Kit	HL612	Load Base	HBB61
-----------	-------	---------------------	-------	-----------	-------

<sup>1</sup> Use outer two poles.

<sup>2</sup> The starting current of motors more than the standard horsepower or kilowatt ratings may require the use of fuses with appropriate time delay characteristics.

<sup>3</sup> When tightening or replacing connectors, refer to lug mounting torque in Terminal & Wire Information Table.

<sup>4</sup> If compression lugs are used for the neutral, order compression lug neutral barrier kit HCL612.

<sup>5</sup> 600 VDC ratings apply when wired per the wiring diagram on page 2.

Protected by one or more of the following US Patents: 6,134,979, 6,356,460, 5,990,439.

Assembled in Mexico

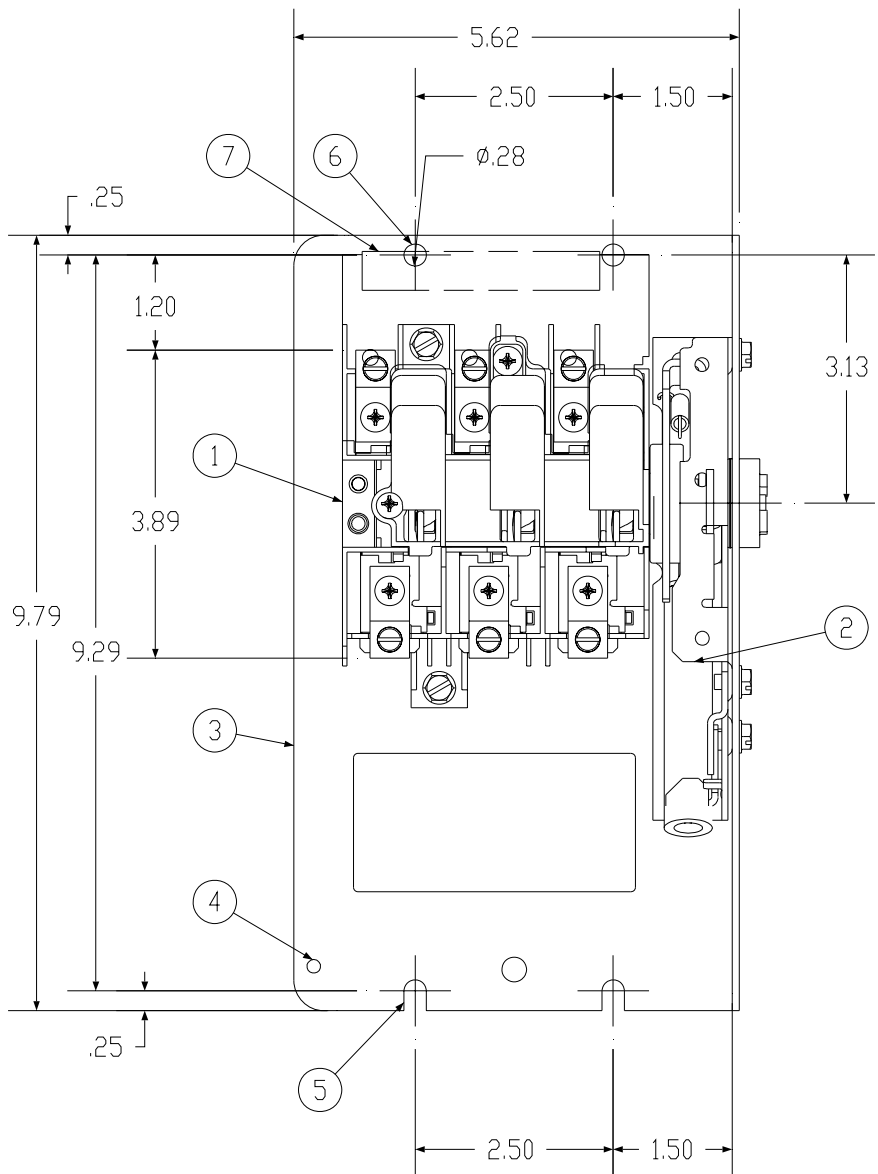
## **Technical Support:**

Toll Free: 1-800-241-4453

Internet: <http://www.sea.siemens.com/power>

## Component Data Sheet

	 <b>Danger</b>	 <b>Peligro</b>	 <b>Danger</b>
	<p><b>Hazardous Voltage.</b> Will cause death or serious injury.</p> <p>Turn off and lock out all power supplying this device before working on this device. Replace all covers before power supplying this device is turned on.</p>	<p><b>Tensión peligrosa.</b> Puede causar la muerte o lesiones graves.</p> <p>Desenergice totalmente antes de instalar o darle servicio. Reemplace todas las barreras y cubiertas antes de energizar el interruptor.</p>	<p><b>Tension dangereuse.</b> Danger de mort ou risque de blessures graves.</p> <p>Couper l'alimentation de l'appareil et barrer avant de travailler. Remplacez tous les couverts avant que l'approvisionnement de pouvoir soit alimenté.</p>

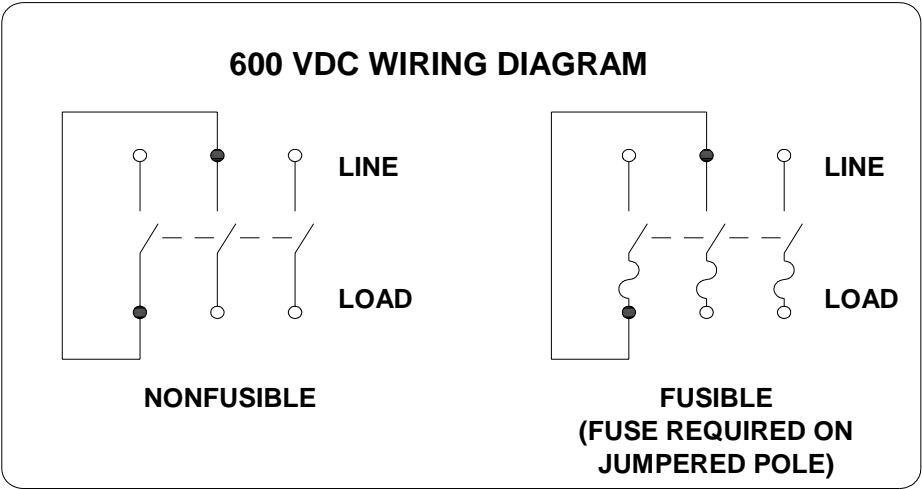


<p>1) Line Base Assembly (factory installed)</p> <p>2) Mechanism Assembly (factory installed)</p> <p>3) Mounting Pan</p> <p>4) Mounting hole for Ground Lug Kit, HG61234</p> <p>5) Slotted Mounting Hole</p>	<p>6) Mounting Hole</p> <p>7) Clear Line Shield (factory installed)</p> <p>8) Pan Mounting Screws, (4) 1/4-20 X 1/2" ( not shown )</p>
--	--



Component Data Sheet

 	 <b>Danger</b> Hazardous Voltage. Will cause death or serious injury. Turn off and lock out all power supplying this device before working on this device. Replace all covers before power supplying this device is turned on.	 <b>Peligro</b> Tensión peligrosa. Puede causar la muerte o lesiones graves. Desenergice totalmente antes de instalar o darle servicio. Reemplace todas las barreras y cubiertas antes de energizar el interruptor.	 <b>Danger</b> Tension dangereuse. Danger de mort ou risque de blessures graves. Couper l'alimentation de l'appareil et barrer avant de travailler. Remplacez tous les couverts avant que l'approvisionnement de pouvoir soit alimenté.



# SIEMENS

**Cat. No. VBNFS361**

**Non-Fusible Panel Mounted Disconnect Switch**

**Type VBII**

**30 Amp Maximum**

**Maximum 600 Volts AC (V~)**

**Maximum 600<sup>4</sup> Volts DC (V-)**

**Suitable for use in NEMA Type 1/3R/4X/12 enclosures**

## Horsepower Ratings

**SEE 500446F00 FOR HORSEPOWER TABLE**

Suitable for use as Service Equipment when used with ground bar kit HG61234 on 3 phase, 3 wire systems or when used with HN612 neutral kit on 1 phase, 3 wire or 3 phase, 4 wire systems.

## Fuse and Short Circuit Information

This switch is suitable for use on a circuit capable of delivering not more than 200 000 amperes, RMS symmetrical, **600** volts maximum when protected by class J, R or T fuses rated **30** amperes maximum.

**Danger** – Unless Class J, R or T fuses are used to protect this switch, it may present a risk of fire and injury to persons if installed on circuits capable of delivering more than 10 000 amperes, RMS symmetrical.

This switch is suitable for use on a circuit capable of delivering not more than 10 000 amperes, RMS symmetrical, **600** volts maximum, when protected by Class K fuses, Class H fuses or a UL Listed Circuit Breaker rated for 10 000 amperes, RMS symmetrical, **600** volts maximum.

This switch is suitable for use on a circuit capable of delivering not more than 10 000 amperes, **600<sup>4</sup>** volts DC maximum, when protected by fuses marked with an interrupting rating of 10 000 amperes, **600<sup>4</sup>** volts DC.

**Danger** – Unless fuses marked for an interrupting rating of 10 000 amperes at **600<sup>4</sup>** volts DC are used to protect this switch, this switch may present a risk of fire and injury to persons if installed on circuits capable of delivering more than 10 000 amperes.

## Terminal Information

## **USE 60°/75°C COPPER OR ALUMINUM WIRE**

Description	Wire Range	Wire Tightening Torque <sup>2</sup>	Lug Mounting Torque <sup>2</sup>
Line, Load & Main Neutral	14-6 AWG	35 lb-ins. 14-10 / 40 lb-ins. 8 AWG 45 lb-ins. 6-4 AWG	24 lb-ins.
Service Ground	14-4 AWG	35 lb-ins. 14-10 / 40 lb-ins. 8 AWG 45 lb-ins. 6-4 AWG	24 lb-ins.

## **UL Listed Compression Lugs (Refer to manufacturers instructions for proper installation)**

**SEE 500445A00 FOR COMPRESSION LUG TABLE**

## Accessories

Aux. Switch (1NO - 1NC)	HA161234	Neutral	HN612	Class R Fuse Kit (Rejects Class H & K Fuses)	—
Aux. Switch (2NO - 2NC)	HA261234	200% Neutral	—	Class T Fuse Kit	—
Aux. Switch (1NO - 1NC)	HA361234	Ground Lug Kit (Wire Range 14-4 AWG)	HG61234	Compression Lug Neutral Barrier	HCL612 <sup>3</sup>
Copper Lug Kit	HLC612	Fuse Puller Kit ( 3 Per Kit )	—	Compression Lug Mounting Kit	—

## Replacement Parts

Line Base	HNB61	Replacement Lug Kit	HL612	Load Base	—
-----------	-------	---------------------	-------	-----------	---

<sup>1</sup> Use outer two poles.

<sup>2</sup> When tightening or replacing connectors, refer to lug mounting torque in Terminal & Wire Information Table.

<sup>3</sup> If compression lugs are used for the neutral, order compression lug neutral barrier kit **HCL612**.

<sup>4</sup> 600 VDC ratings apply when wired per the wiring diagram on page 2.

Protected by one or more of the following US Patents: 6,134,979, 6,356,460, 5,990,439.

Assembled in Mexico

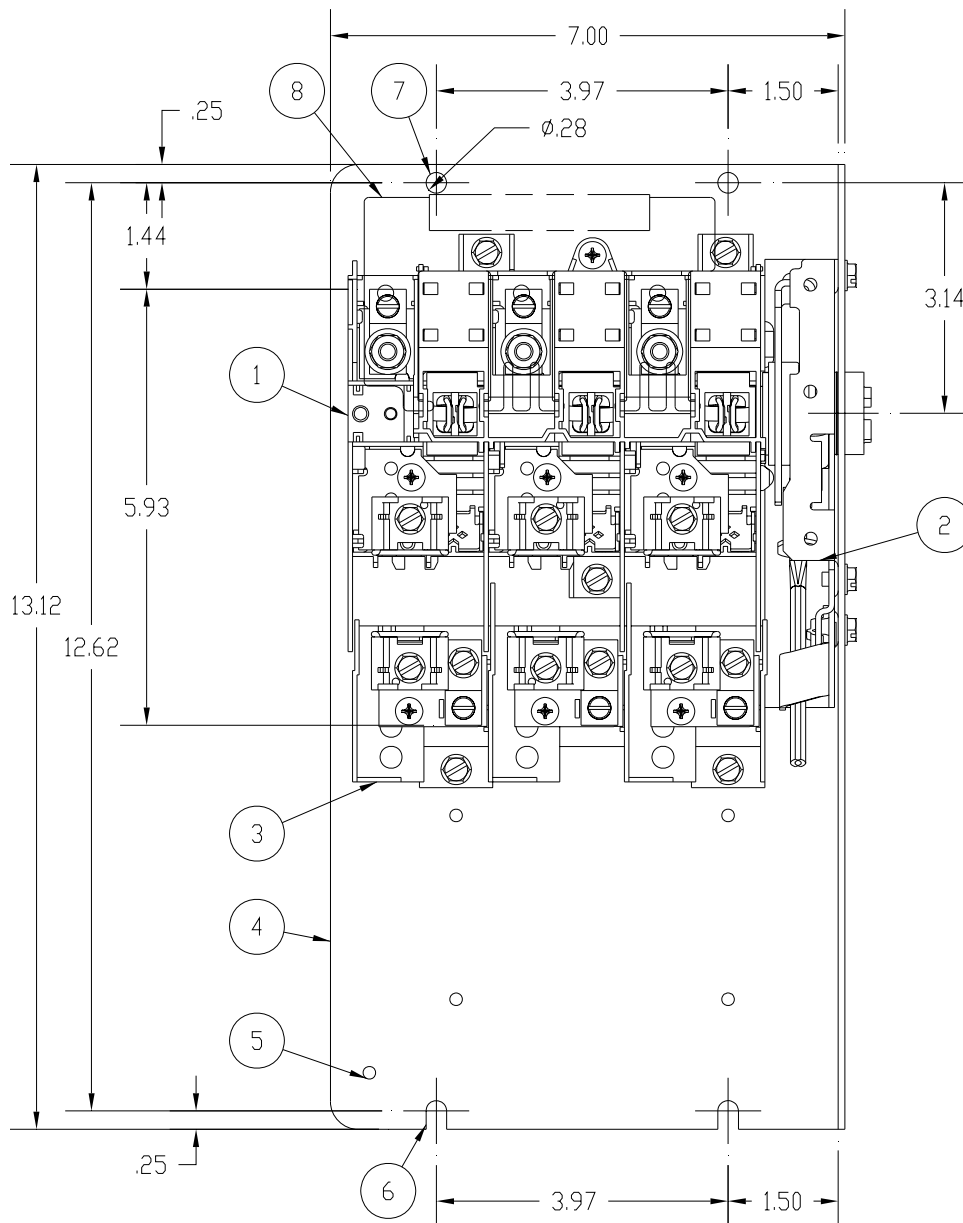
## **Technical Support:**

Toll Free: 1-800-241-4453

Internet: <http://www.sea.siemens.com/power>

### Component Data Sheet

	<p><b>⚠ Danger</b></p> <p><b>Hazardous Voltage.</b> Will cause death or serious injury.</p>	<p><b>⚠ Peligro</b></p> <p><b>Tensión peligrosa.</b> Puede causar la muerte o lesiones graves.</p>	<p><b>⚠ Danger</b></p> <p><b>Tension dangereuse.</b> Danger de mort ou risque de blessures graves.</p>
	<p>Turn off and lock out all power supplying this device before working on this device. Replace all covers before power supplying this device is turned on.</p>	<p>Desenergice totalmente antes de instalar o darle servicio. Reemplace todas las barreras y cubiertas antes de energizar el interruptor.</p>	<p>Couper l'alimentation de l'appareil et barrer avant de travailler. Remplacez tous les couverts avant que l'approvisionnement de pouvoir soit alimenté.</p>



<p>1) Line Base Assembly (factory installed)</p> <p>2) Mechanism Assembly (factory installed)</p> <p>3) Load Base Assembly (factory installed)</p> <p>4) Mounting Pan</p> <p>5) Mounting hole for Ground Lug Kit, HG61234</p>	<p>6) Slotted Mounting Hole</p> <p>7) Mounting Hole</p> <p>8) Clear Line Shield (factory installed)</p> <p>9) Support Mounting Hole</p> <p>10) Pan Mounting Screws, (4) 1/4-20 X 1/2" ( not shown )</p>
---	---

# SIEMENS

**Cat. No. VBFS322**  
**60 Amp Maximum**

**Fusible Panel Mounted Disconnect Switch**  
**Maximum 240 Volts AC (V~)**

**Type VBII**  
**Maximum 250 Volts DC (V-)**

**Suitable for use in NEMA Type 1/3R/4X/12 enclosures**

## Horsepower Ratings

**SEE 500446G00 FOR HORSEPOWER TABLE**

**Continuous load current not to exceed 80% of the rating of fuses employed in other than motor circuits.**

**Suitable for use as Service Equipment when used with ground bar kit HG61234 on 3 phase, 3 wire systems or when used with HN623 neutral kit on 1 phase, 3 wire or 3 phase, 4 wire systems.**

## Fuse and Short Circuit Information

When used with Class K fuses, Class H fuses or a UL Listed Circuit Breaker rated for 10 000 amperes, RMS symmetrical, **240** volts maximum, this switch is suitable for use on a circuit capable of delivering not more than 10 000 amperes, RMS symmetrical, **240** volts, maximum.

When used with Class R fuses and Class R fuse clip kit **HR62** properly installed, this switch is suitable for use on a circuit capable of delivering not more than 200 000 amperes, RMS symmetrical, **240** volts maximum.

**Danger** – Unless Class R fuses are used, this switch may present a risk of fire and injury to persons if installed on circuits capable of delivering more than 10 000 amperes, RMS symmetrical.

When used with fuses marked with DC ratings, this switch is suitable for use on a circuit capable of delivering not more than the DC interrupting rating marked on the fuse, at the DC voltage rating marked on the fuse, up to a maximum of 10 000 amperes, **250** volts DC.

**Danger** – Unless fuses marked for an interrupting rating of 10 000 amperes at **250** volts DC are used, this switch may present a risk of fire and injury to persons if installed on circuits capable of delivering more than 10 000 amperes.

Renewable link fuses are not recommended.

## Terminal Information

## **USE 60°/75°C COPPER OR ALUMINUM WIRE**

Description	Wire Range	Wire Tightening Torque <sup>3</sup>	Lug Mounting Torque <sup>3</sup>
Line, Load & Main Neutral	14-2 AWG	35 lb-ins. 14-10 / 40 lb-ins. 8 AWG 45 lb-ins. 6-4 AWG / 50 lb-ins. 3-2 AWG	80 lb-ins.
Service Ground	14-4 AWG	35 lb-ins. 14-10 / 40 lb-ins. 8 AWG 45 lb-ins. 6-4 AWG	24 lb-ins.

**UL Listed Compression Lugs (Refer to manufacturers instructions for proper installation)**

**SEE 500445C00 FOR COMPRESSION LUG TABLE**

## Accessories

Aux. Switch (1NO - 1NC)	HA161234	Neutral	HN623	Class R Fuse Kit (Rejects Class H & K Fuses)	HR62
Aux. Switch (2NO - 2NC)	HA261234	200% Neutral	—	Class T Fuse Kit	—
Aux. Switch (1NO - 1NC)	HA361234	Ground Lug Kit (Wire Range 14-4 AWG)	HG61234	Compression Lug Neutral Barrier	HCL623 <sup>4</sup>
Copper Lug Kit	HLC612	Fuse Puller Kit ( 3 Per Kit )	HP62	Compression Lug Mounting Kit	—

## Replacement Parts

Line Base	HFB22	Replacement Lug Kit	HL612	Load Base	HBB22
-----------	-------	---------------------	-------	-----------	-------

<sup>1</sup> Use outer two poles.

<sup>2</sup> The starting current of motors more than the standard horsepower or kilowatt ratings may require the use of fuses with appropriate time delay characteristics.

<sup>3</sup> When tightening or replacing connectors, refer to lug mounting torque in Terminal & Wire Information Table.

<sup>4</sup> If compression lugs are used for the neutral, order compression lug neutral barrier kit **HCL623**.

Protected by one or more of the following US Patents: 6,134,979, 6,356,460, 5,990,439.

Assembled in Mexico

## **Technical Support:**

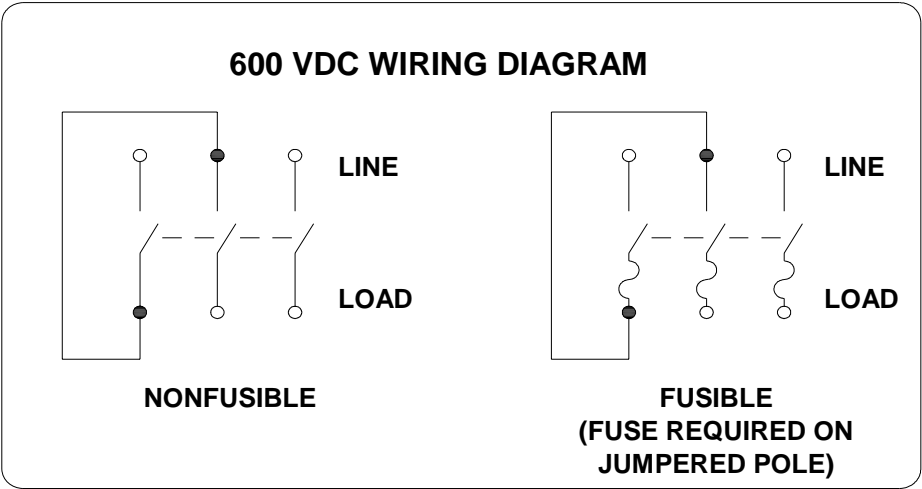
Toll Free: 1-800-241-4453

Internet: <http://www.sea.siemens.com/power>



Component Data Sheet

 	 <b>Danger</b> Hazardous Voltage. Will cause death or serious injury. Turn off and lock out all power supplying this device before working on this device. Replace all covers before power supplying this device is turned on.	 <b>Peligro</b> Tensión peligrosa. Puede causar la muerte o lesiones graves. Desenergice totalmente antes de instalar o darle servicio. Reemplace todas las barreras y cubiertas antes de energizar el interruptor.	 <b>Danger</b> Tension dangereuse. Danger de mort ou risque de blessures graves. Couper l'alimentation de l'appareil et barrer avant de travailler. Remplacez tous les couverts avant que l'approvisionnement de pouvoir soit alimenté.



# SIEMENS

**Cat. No. VBFS362**  
**60 Amp Maximum**

**Fusible Flange Mounted Disconnect Switch**  
**Maximum 600 Volts AC (V~)**

**Type VBII**  
**Maximum 600<sup>5</sup> Volts DC (V-)**

**Suitable for use in NEMA Type 1/3R/4X/12 enclosures**

## Horsepower Ratings

**SEE 500446M01 FOR HORSEPOWER TABLE**

Continuous load current not to exceed 80% of the rating of fuses employed in other than motor circuits.

Suitable for use as Service Equipment when used with ground bar kit HG61234 on 3 phase, 3 wire systems or when used with HN623 neutral kit on 1 phase, 3 wire or 3 phase, 4 wire systems.

## Fuse and Short Circuit Information

When used with Class K fuses, Class H fuses or a UL Listed Circuit Breaker rated for 10 000 amperes, RMS symmetrical, 600 volts maximum, this switch is suitable for use on a circuit capable of delivering not more than 10 000 amperes, RMS symmetrical, 600 volts, maximum.

When used with Class R fuses and Class R fuse clip kit HR62 properly installed, this switch is suitable for use on a circuit capable of delivering not more than 200 000 amperes, RMS symmetrical, 600 volts maximum.

When used with Class J fuses with the load base relocated to the "J Fuse" position marked on the enclosure this switch is suitable for use on a circuit capable of delivering not more than 200 000 amperes, RMS symmetrical, 600 volts maximum.

**Danger** – Unless Class R or J fuses are used, this switch may present a risk of fire and injury to persons if installed on circuits capable of delivering more than 10 000 amperes, RMS symmetrical.

When used with fuses marked with DC ratings, this switch is suitable for use on a circuit capable of delivering not more than the DC interrupting rating marked on the fuse, at the DC voltage rating marked on the fuse, up to a maximum of 10 000 amperes, 600<sup>5</sup> volts DC.

**Danger** – Unless fuses marked for an interrupting rating of 10 000 amperes at 600<sup>5</sup> volts DC are used, this switch may present a risk of fire and injury to persons if installed on circuits capable of delivering more than 10 000 amperes.

Renewable link fuses are not recommended.

## Terminal Information

## **USE 60°/75°C COPPER OR ALUMINUM WIRE**

Description	Wire Range	Wire Tightening Torque <sup>3</sup>	Lug Mounting Torque <sup>3</sup>
Line, Load & Main Neutral	14-2 AWG	35 lb-ins. 14-10 / 40 lb-ins. 8 AWG 45 lb-ins. 6-4 AWG / 50 lb-ins. 3-2 AWG	80 lb-ins.
Service Ground	14-4 AWG	35 lb-ins. 14-10 / 40 lb-ins. 8 AWG 45 lb-ins. 6-4 AWG	24 lb-ins.

## **UL Listed Compression Lugs (Refer to manufacturers instructions for proper installation)**

**SEE 500445C00 FOR COMPRESSION LUG TABLE**

## Accessories

Aux. Switch (1NO - 1NC)	HA161234	Neutral	HN623	Class R Fuse Kit (Rejects Class H & K Fuses)	HR62
Aux. Switch (2NO - 2NC)	HA261234	200% Neutral	—	Class T Fuse Kit	—
Aux. Switch (1NO - 1NC)	HA361234	Ground Lug Kit (Wire Range 14-4 AWG)	HG61234	Compression Lug Neutral Barrier	HCL623 <sup>4</sup>
Copper Lug Kit	HLC612	Fuse Puller Kit (3 Per Kit)	HP62	Compression Lug Mounting Kit	—

## Replacement Parts

Line Base	HFB62	Replacement Lug Kit	HL612	Load Base	HBB62
-----------	-------	---------------------	-------	-----------	-------

<sup>1</sup> Use outer two poles.

<sup>2</sup> The starting current of motors more than the standard horsepower or kilowatt ratings may require the use of fuses with appropriate time delay characteristics.

<sup>3</sup> When tightening or replacing connectors, refer to lug mounting torque in Terminal & Wire Information Table.

<sup>4</sup> If compression lugs are used for the neutral, order compression lug neutral barrier kit HCL623.

<sup>5</sup> 600 VDC ratings apply when wired per the wiring diagram on page 2.

Protected by one or more of the following US Patents: 6,134,979, 6,356,460, 5,990,439.

Assembled in Mexico

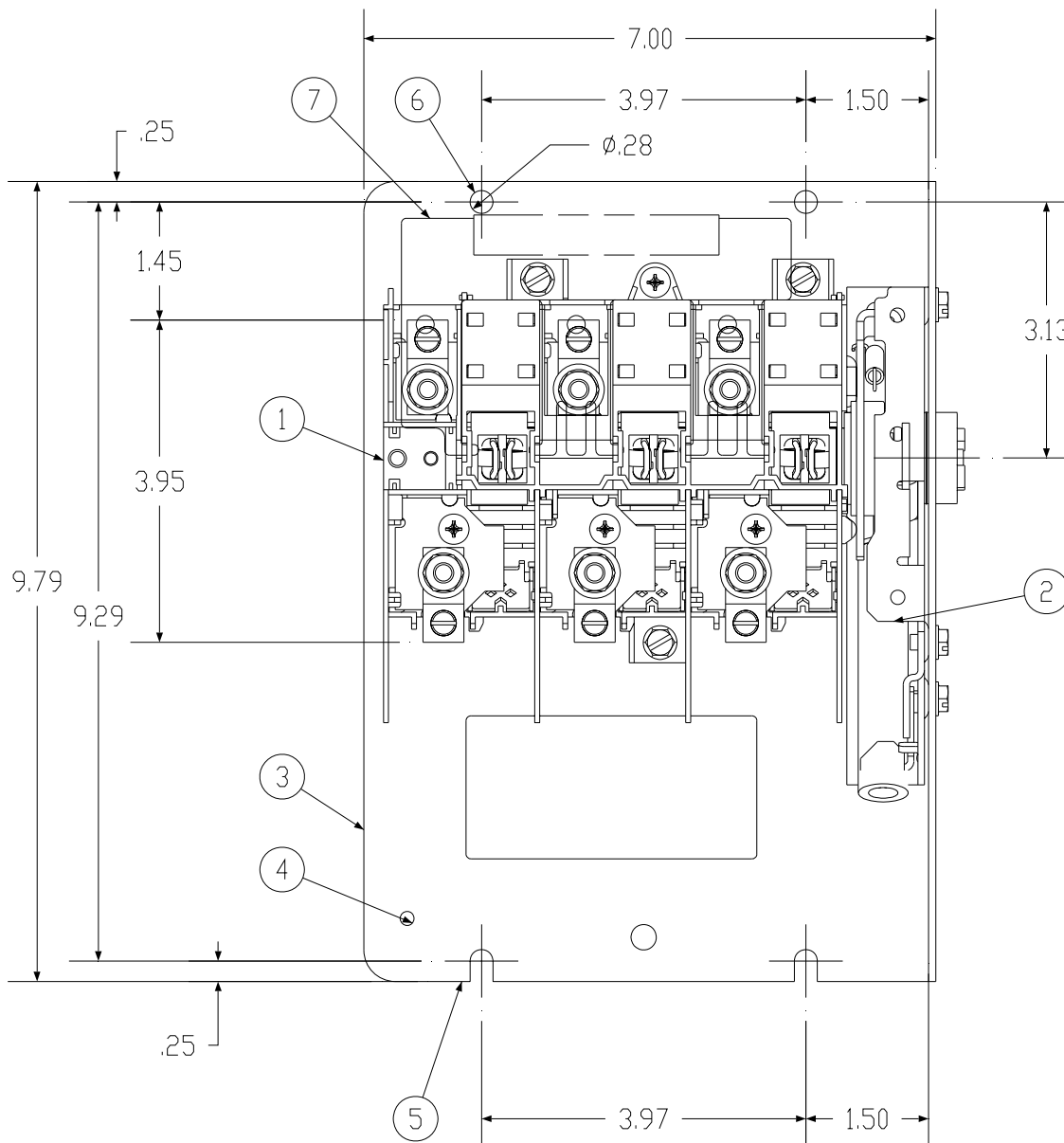
**Technical Support:**

Toll Free: 1-800-241-4453

Internet: <http://www.sea.siemens.com/power>

## Component Data Sheet

	<div> <div>  <b>Danger</b> </div> <div>  <b>Peligro</b> </div> <div>  <b>Danger</b> </div> </div>		
	<p><b>Hazardous Voltage.</b>  <b>Will cause death or serious injury.</b></p> <p>Turn off and lock out all power supplying this device before working on this device.</p> <p>Replace all covers before power supplying this device is turned on.</p>	<p><b>Tensión peligrosa.</b>  <b>Puede causar la muerte o lesiones graves.</b></p> <p>Desenergice totalmente antes de instalar o darle servicio. Reemplace todas las barreras y cubiertas antes de energizar el interruptor.</p>	<p><b>Tension dangereuse.</b>  <b>Danger de mort ou risque de blessures graves.</b></p> <p>Couper l'alimentation de l'appareil et barrer avant de travailler.</p> <p>Remplacez tous les couverts avant que l'alprovisionnement de pouvoir soit alimenté.</p>



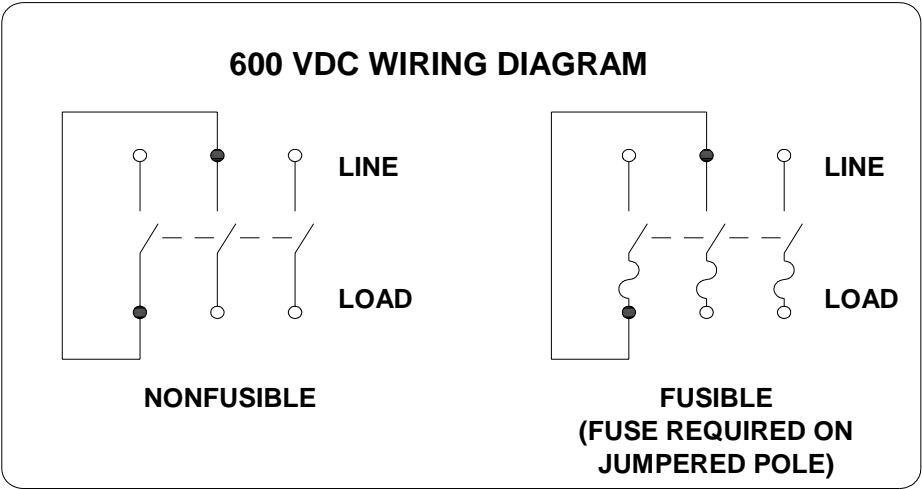
- 1) **Line Base Assembly (factory installed)**
- 2) **Mechanism Assembly (factory installed)**
- 3) **Load Base Assembly (factory installed)**
- 4) **Mounting Pan**
- 5) **Mounting hole for Ground Lug Kit, HG61234**

- 6) **Slotted Mounting Hole**
- 7) **Mounting Hole**
- 8) **Clear Line Shield (factory installed)**
- 9) **Pan Mounting Screws, (4) 1/4-20 X 1/2" ( not shown )**



Component Data Sheet

	 <b>Danger</b>	 <b>Peligro</b>	 <b>Danger</b>
	<p><b>Hazardous Voltage.</b> Will cause death or serious injury.</p> <p>Turn off and lock out all power supplying this device before working on this device. Replace all covers before power supplying this device is turned on.</p>	<p><b>Tensión peligrosa.</b> Puede causar la muerte o lesiones graves.</p> <p>Desenergice totalmente antes de instalar o darle servicio. Reemplace todas las barreras y cubiertas antes de energizar el interruptor.</p>	<p><b>Tension dangereuse.</b> Danger de mort ou risque de blessures graves.</p> <p>Couper l'alimentation de l'appareil et barrer avant de travailler. Remplacez tous les couverts avant que l'approvisionnement de pouvoir soit alimenté.</p>



# SIEMENS

**Cat. No. VBNFS362**

**Non-Fusible Panel Mounted Disconnect Switch**

**Type VBII**

**30 Amp Maximum**

**Maximum 600 Volts AC (V~)**

**Maximum 600<sup>4</sup> Volts DC (V-)**

**Suitable for use in NEMA Type 1/3R/4X/12 enclosures**

## Horsepower Ratings

**SEE 500446P01 FOR HORSEPOWER TABLE**

Suitable for use as Service Equipment when used with ground bar kit HG61234 on 3 phase, 3 wire systems or when used with HN623 neutral kit on 1 phase, 3 wire or 3 phase, 4 wire systems.

## Fuse and Short Circuit Information

This switch is suitable for use on a circuit capable of delivering not more than 200 000 amperes, RMS symmetrical, **600** volts maximum when protected by class J, R or T fuses rated **60** amperes maximum.

**Danger** – Unless Class J, R or T fuses are used to protect this switch, it may present a risk of fire and injury to persons if installed on circuits capable of delivering more than 10 000 amperes, RMS symmetrical.

This switch is suitable for use on a circuit capable of delivering not more than 10 000 amperes, RMS symmetrical, **600** volts maximum, when protected by Class K fuses, Class H fuses or a UL Listed Circuit Breaker rated for 10 000 amperes, RMS symmetrical, **600** volts maximum.

This switch is suitable for use on a circuit capable of delivering not more than 10 000 amperes, **600<sup>4</sup>** volts DC maximum, when protected by fuses marked with an interrupting rating of 10 000 amperes, **600<sup>4</sup>** volts DC.

**Danger** – Unless fuses marked for an interrupting rating of 10 000 amperes at **600<sup>4</sup>** volts DC are used to protect this switch, this switch may present a risk of fire and injury to persons if installed on circuits capable of delivering more than 10 000 amperes.

## Terminal Information

## **USE 60°/75°C COPPER OR ALUMINUM WIRE**

Description	Wire Range	Wire Tightening Torque <sup>2</sup>	Lug Mounting Torque <sup>2</sup>
Line, Load & Main Neutral	14-2 AWG	35 lb-ins. 14-10 / 40 lb-ins. 8 AWG 45 lb-ins. 6-4 AWG / 50 lb-ins. 3-2 AWG	80 lb-ins.
Service Ground	14-4 AWG	35 lb-ins. 14-10 / 40 lb-ins. 8 AWG 45 lb-ins. 6-4 AWG	24 lb-ins.

## **UL Listed Compression Lugs (Refer to manufacturers instructions for proper installation)**

**SEE 500445C00 FOR COMPRESSION LUG TABLE**

## Accessories

Aux. Switch (1NO - 1NC)	HA161234	Neutral	HN623	Class R Fuse Kit (Rejects Class H & K Fuses)	—
Aux. Switch (2NO - 2NC)	HA261234	200% Neutral	—	Class T Fuse Kit	—
Aux. Switch (1NO - 1NC)	HA361234	Ground Lug Kit (Wire Range 14-4 AWG)	HG61234	Compression Lug Neutral Barrier	HCL623 <sup>3</sup>
Copper Lug Kit	HLC612	Fuse Puller Kit ( 3 Per Kit )	—	Compression Lug Mounting Kit	—

## Replacement Parts

Line Base	HNB62	Replacement Lug Kit	HL612	Load Base	—
-----------	-------	---------------------	-------	-----------	---

<sup>1</sup> Use outer two poles.

<sup>2</sup> When tightening or replacing connectors, refer to lug mounting torque in Terminal & Wire Information Table.

<sup>3</sup> If compression lugs are used for the neutral, order compression lug neutral barrier kit **HCL623**.

<sup>4</sup> 600 VDC ratings apply when wired per the wiring diagram on page 2.

Protected by one or more of the following US Patents: 6,134,979, 6,356,460, 5,990,439.

Assembled in Mexico

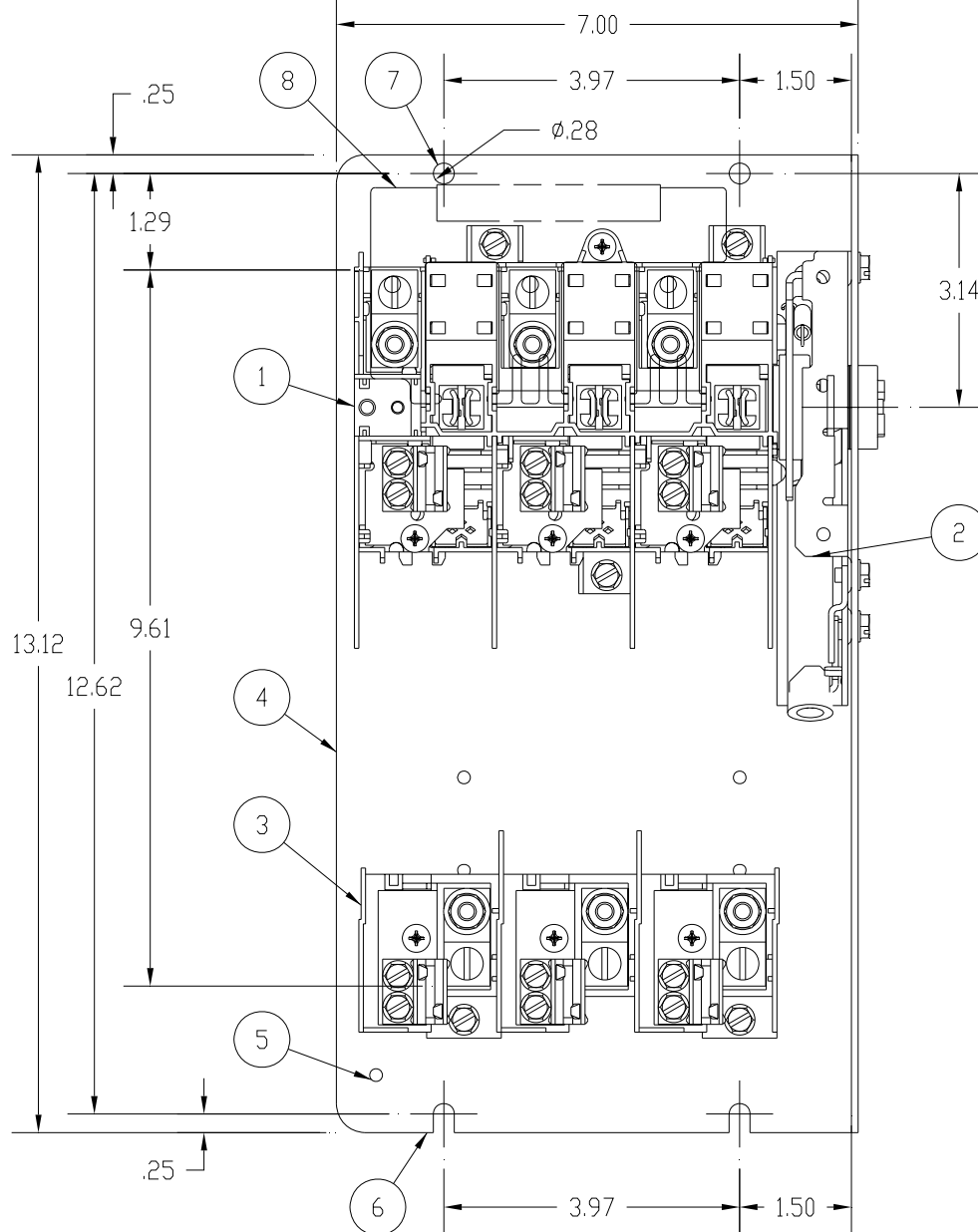
**Technical Support:**

Toll Free: 1-800-241-4453

Internet: <http://www.sea.siemens.com/power>

### Component Data Sheet

	<p><b>⚠ Danger</b></p> <p><b>Hazardous Voltage.</b> Will cause death or serious injury.</p>	<p><b>⚠ Peligro</b></p> <p><b>Tensión peligrosa.</b> Puede causar la muerte o lesiones graves.</p>	<p><b>⚠ Danger</b></p> <p><b>Tension dangereuse.</b> Danger de mort ou risque de blessures graves.</p>
	<p>Turn off and lock out all power supplying this device before working on this device. Replace all covers before power supplying this device is turned on.</p>	<p>Desenergice totalmente antes de instalar o darle servicio. Reemplace todas las barreras y cubiertas antes de energizar el interruptor.</p>	<p>Couper l'alimentation de l'appareil et barrer avant de travailler. Remplacez tous les couverts avant que l'approvisionnement de pouvoir soit alimenté.</p>

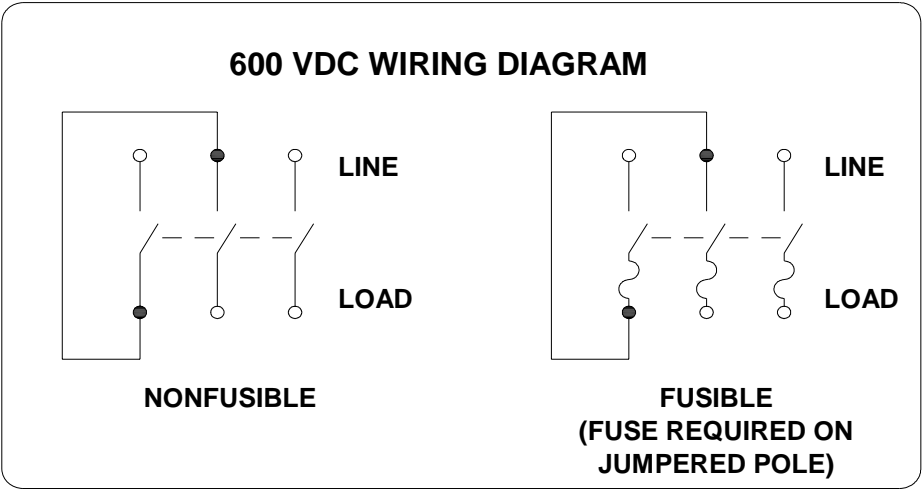


- 1) Line Base Assembly (factory installed)
- 2) Mechanism Assembly (factory installed)
- 3) Load Base Assembly (factory installed)
- 4) Mounting Pan
- 5) Mounting hole for Ground Lug Kit, HG61234

- 6) Slotted Mounting Hole
- 7) Mounting Hole
- 8) Clear Line Shield (factory installed)
- 9) Support Mounting Hole
- 10) Pan Mounting Screws, (4) 1/4-20 X 1/2" ( not shown )

Component Data Sheet

	 <b>Danger</b>	 <b>Peligro</b>	 <b>Danger</b>
	<p><b>Hazardous Voltage.</b> Will cause death or serious injury.</p> <p>Turn off and lock out all power supplying this device before working on this device. Replace all covers before power supplying this device is turned on.</p>	<p><b>Tensión peligrosa.</b> Puede causar la muerte o lesiones graves.</p> <p>Desenergice totalmente antes de instalar o darle servicio. Reemplace todas las barreras y cubiertas antes de energizar el interruptor.</p>	<p><b>Tension dangereuse.</b> Danger de mort ou risque de blessures graves.</p> <p>Couper l'alimentation de l'appareil et barrer avant de travailler. Remplacez tous les couverts avant que l'approvisionnement de pouvoir soit alimenté.</p>



# SIEMENS

**Cat. No. VBFS363**  
**100 Amp Maximum**

**Fusible Flange Mounted Disconnect Switch**  
**Maximum 600 Volts AC (V~)**

**Type VBII**  
**Maximum 600<sup>5</sup> Volts DC (V-)**

**Suitable for use in NEMA Type 1/3R/4X/12 enclosures**

## Horsepower Ratings

**SEE 500446AA01 FOR HORSEPOWER TABLE**

Continuous load current not to exceed 80% of the rating of fuses employed in other than motor circuits.

Suitable for use as Service Equipment when used with ground bar kit HG61234 on 3 phase, 3 wire systems or when used with HN623 neutral kit on 1 phase, 3 wire or 3 phase, 4 wire systems.

## Fuse and Short Circuit Information

When used with Class K fuses, Class H fuses or a UL Listed Circuit Breaker rated for 10 000 amperes, RMS symmetrical, **600** volts maximum, this switch is suitable for use on a circuit capable of delivering not more than 10 000 amperes, RMS symmetrical, **600** volts, maximum.

When used with Class R fuses and Class R fuse clip kit **HR63** properly installed, this switch is suitable for use on a circuit capable of delivering not more than 200 000 amperes, RMS symmetrical, **600** volts maximum.

When used with Class J fuses with the load base relocated to the "J Fuse" position marked on the enclosure this switch is suitable for use on a circuit capable of delivering not more than 200 000 amperes, RMS symmetrical, **600** volts maximum.

When used with Class T fuses and Class T fuse adaptor kit **HT63** properly installed, this switch is suitable for use on a circuit capable of delivering not more than 200 000 amperes, RMS symmetrical, **600** volts maximum.

**Danger** – Unless Class R, J or T fuses are used, this switch may present a risk of fire and injury to persons if installed on circuits capable of delivering more than 10 000 amperes, RMS symmetrical.

When used with fuses marked with DC ratings, this switch is suitable for use on a circuit capable of delivering not more than the DC interrupting rating marked on the fuse, at the DC voltage rating marked on the fuse, up to a maximum of 10 000 amperes, **600<sup>5</sup>** volts DC.

**Danger** – Unless fuses marked for an interrupting rating of 10 000 amperes at **600<sup>5</sup>** volts DC are used, this switch may present a risk of fire and injury to persons if installed on circuits capable of delivering more than 10 000 amperes.

Renewable link fuses are not recommended.

## Terminal Information

## **USE 75°C COPPER OR ALUMINUM WIRE**

Description	Wire Range	Wire Tightening Torque <sup>3</sup>	Lug Mounting Torque <sup>3</sup>
Line, Load & Main Neutral	14-1/0 AWG	35 lb-ins. 14-10 / 40 lb-ins. 8 AWG 45 lb-ins. 6-4 AWG / 50 lb-ins. 3-1/0 AWG	80 lb-ins.
Service Ground	14-4 AWG	35 lb-ins. 14-10 / 40 lb-ins. 8 AWG 45 lb-ins. 6-4 AWG	24 lb-ins.

**UL Listed Compression Lugs (Refer to manufacturers instructions for proper installation)**

**SEE 500445D00 FOR COMPRESSION LUG TABLE**

## Accessories

Aux. Switch (1NO - 1NC)	HA161234	Neutral	HN623	Class R Fuse Kit (Rejects Class H & K Fuses)	HR63
Aux. Switch (2NO - 2NC)	HA261234	200% Neutral	HN263	Class T Fuse Kit	—
Aux. Switch (1NO - 1NC)	HA361234	Ground Lug Kit (Wire Range 14-4 AWG)	HG61234	Compression Lug Neutral Barrier	HCL63 <sup>4</sup>
Copper Lug Kit	HLC63	Fuse Puller Kit ( 3 Per Kit )	HP63	Compression Lug Mounting Kit	—

## Replacement Parts

Line Base	HFB63	Replacement Lug Kit	HL63	Load Base	HBB63
-----------	-------	---------------------	------	-----------	-------

<sup>1</sup> Use outer two poles.

<sup>2</sup> The starting current of motors more than the standard horsepower or kilowatt ratings may require the use of fuses with appropriate time delay characteristics.

<sup>3</sup> When tightening or replacing connectors, refer to lug mounting torque in Terminal & Wire Information Table.

<sup>4</sup> If compression lugs are used for the neutral, order compression lug neutral barrier kit **HCL63**.

<sup>5</sup> 600 VDC ratings apply when wired per the wiring diagram on page 2.

Protected by one or more of the following US Patents: 6,134,979, 6,356,460, 5,990,439.

Assembled in Mexico

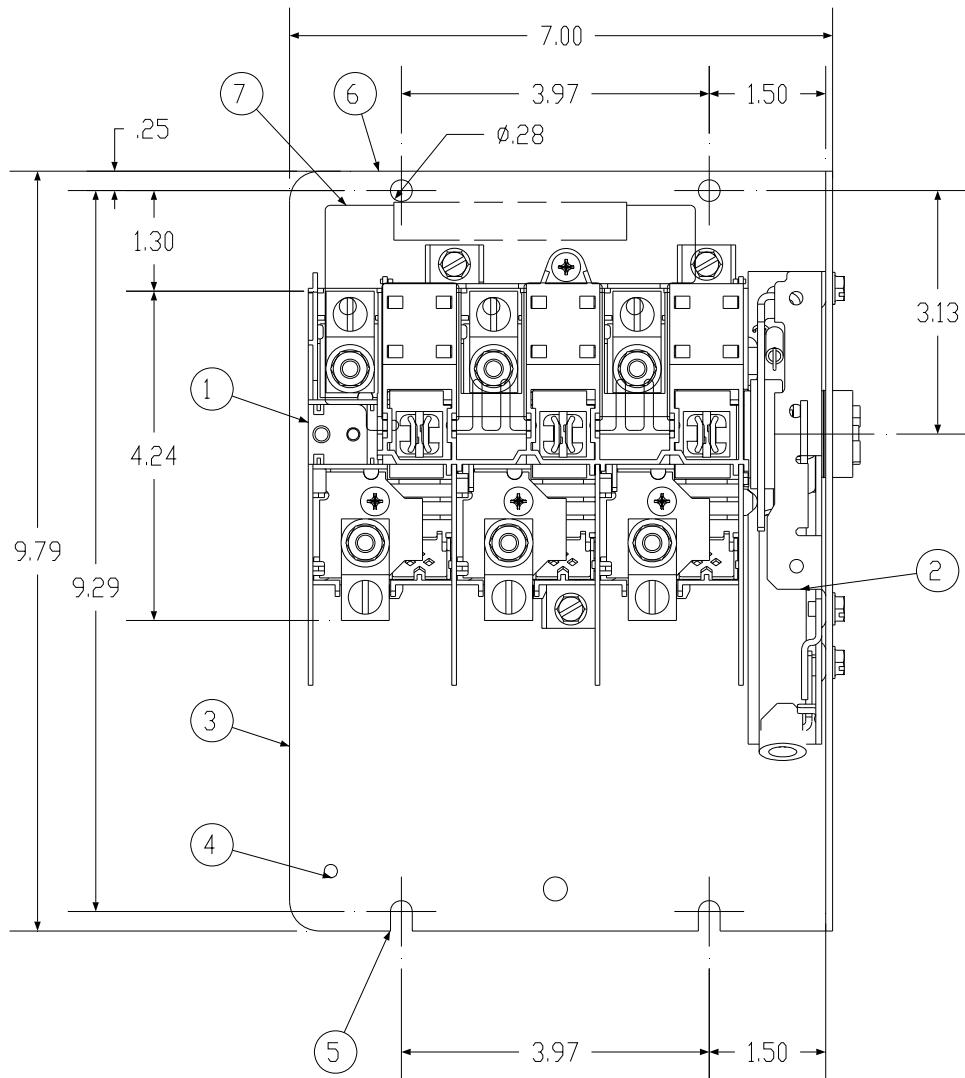
**Technical Support:**

Toll Free: 1-800-241-4453

Internet: <http://www.sea.siemens.com/power>

## Component Data Sheet

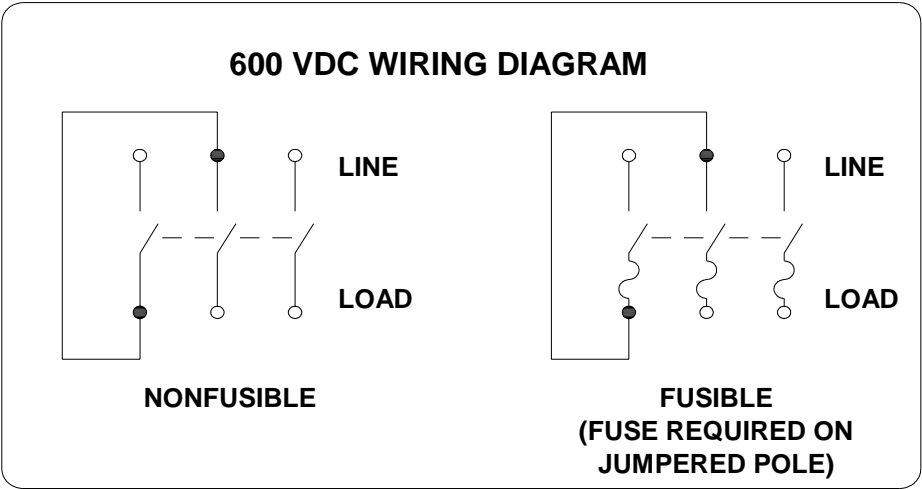
	 <b>Danger</b>	 <b>Peligro</b>	 <b>Danger</b>
	<b>Hazardous Voltage.</b> Will cause death or serious injury. Turn off and lock out all power supplying this device before working on this device. Replace all covers before power supplying this device is turned on.	<b>Tensión peligrosa.</b> Puede causar la muerte o lesiones graves. Desenergice totalmente antes de instalar o darle servicio. Reemplace todas las barreras y cubiertas antes de energizar el interruptor.	<b>Tension dangereuse.</b> Danger de mort ou risque de blessures graves. Couper l'alimentation de l'appareil et barrer avant de travailler. Remplacez tous les couverts avant que l'approvisionnement de pouvoir soit alimenté.



1) Line Base Assembly (factory installed)	6) Mounting Hole
2) Mechanism Assembly (factory installed)	7) Clear Line Shield (factory installed)
3) Mounting Pan	8) Pan Mounting Screws, (4) 1/4-20 X 1/2" ( not shown )
4) Mounting hole for Ground Lug Kit, HG61234	
5) Slotted Mounting Hole	

Component Data Sheet

 	 <b>Danger</b> Hazardous Voltage. Will cause death or serious injury. Turn off and lock out all power supplying this device before working on this device. Replace all covers before power supplying this device is turned on.	 <b>Peligro</b> Tensión peligrosa. Puede causar la muerte o lesiones graves. Desenergice totalmente antes de instalar o darle servicio. Reemplace todas las barreras y cubiertas antes de energizar el interruptor.	 <b>Danger</b> Tension dangereuse. Danger de mort ou risque de blessures graves. Couper l'alimentation de l'appareil et barrer avant de travailler. Remplacez tous les couverts avant que l'approvisionnement de pouvoir soit alimenté.



# SIEMENS

**Cat. No. VBFS363**  
**100 Amp Maximum**  
**Suitable for use in NEMA Type 1/3R/4X/12 enclosures**  
**Horsepower Ratings**

**Non-Fusible Panel Mounted Disconnect Switch**  
**Maximum 600 Volts AC (V~)**

**Type VBII**  
**Maximum 600<sup>5</sup> Volts DC (V-)**

**SEE 500446AA01 FOR HORSEPOWER TABLE**

Continuous load current not to exceed 80% of the rating of fuses employed in other than motor circuits.

Suitable for use as Service Equipment when used with ground bar kit HG61234 on 3 phase, 3 wire systems or when used with HN623 neutral kit on 1 phase, 3 wire or 3 phase, 4 wire systems.

## Fuse and Short Circuit Information

When used with Class K fuses, Class H fuses or a UL Listed Circuit Breaker rated for 10 000 amperes, RMS symmetrical, **600** volts maximum, this switch is suitable for use on a circuit capable of delivering not more than 10 000 amperes, RMS symmetrical, **600** volts, maximum.

When used with Class R fuses and Class R fuse clip kit **HR63** properly installed, this switch is suitable for use on a circuit capable of delivering not more than 200 000 amperes, RMS symmetrical, **600** volts maximum.

When used with Class J fuses with the load base relocated to the "J Fuse" position marked on the enclosure this switch is suitable for use on a circuit capable of delivering not more than 200 000 amperes, RMS symmetrical, **600** volts maximum.

When used with Class T fuses and Class T fuse adaptor kit **HT63** properly installed, this switch is suitable for use on a circuit capable of delivering not more than 200 000 amperes, RMS symmetrical, **600** volts maximum.

**Danger** – Unless Class R, J or T fuses are used, this switch may present a risk of fire and injury to persons if installed on circuits capable of delivering more than 10 000 amperes, RMS symmetrical.

When used with fuses marked with DC ratings, this switch is suitable for use on a circuit capable of delivering not more than the DC interrupting rating marked on the fuse, at the DC voltage rating marked on the fuse, up to a maximum of 10 000 amperes, **600<sup>5</sup>** volts DC.

**Danger** – Unless fuses marked for an interrupting rating of 10 000 amperes at **600<sup>5</sup>** volts DC are used, this switch may present a risk of fire and injury to persons if installed on circuits capable of delivering more than 10 000 amperes.

Renewable link fuses are not recommended.

## Terminal Information

## USE 75°C COPPER OR ALUMINUM WIRE

Description	Wire Range	Wire Tightening Torque <sup>3</sup>	Lug Mounting Torque <sup>3</sup>
Line, Load & Main Neutral	14-1/0 AWG	35 lb-ins. 14-10 / 40 lb-ins. 8 AWG 45 lb-ins. 6-4 AWG / 50 lb-ins. 3-1/0 AWG	80 lb-ins.
Service Ground	14-4 AWG	35 lb-ins. 14-10 / 40 lb-ins. 8 AWG 45 lb-ins. 6-4 AWG	24 lb-ins.

**UL Listed Compression Lugs (Refer to manufacturers instructions for proper installation)**

**SEE 500445D00 FOR COMPRESSION LUG TABLE**

## Accessories

Aux. Switch (1NO - 1NC)	HA161234	Neutral	HN623	Class R Fuse Kit (Rejects Class H & K Fuses)	HR63
Aux. Switch (2NO - 2NC)	HA261234	200% Neutral	HN263	Class T Fuse Kit	—
Aux. Switch (1NO - 1NC)	HA361234	Ground Lug Kit (Wire Range 14-4 AWG)	HG61234	Compression Lug Neutral Barrier	HCL63 <sup>4</sup>
Copper Lug Kit	HLC63	Fuse Puller Kit ( 3 Per Kit )	HP63	Compression Lug Mounting Kit	—

## Replacement Parts

Line Base	HFB63	Replacement Lug Kit	HL63	Load Base	HBB63
-----------	-------	---------------------	------	-----------	-------

<sup>1</sup> Use outer two poles.

<sup>2</sup> The starting current of motors more than the standard horsepower or kilowatt ratings may require the use of fuses with appropriate time delay characteristics.

<sup>3</sup> When tightening or replacing connectors, refer to lug mounting torque in Terminal & Wire Information Table.

<sup>4</sup> If compression lugs are used for the neutral, order compression lug neutral barrier kit **HCL63**.

<sup>5</sup> 600 VDC ratings apply when wired per the wiring diagram on page 2.

Protected by one or more of the following US Patents: 6,134,979, 6,356,460, 5,990,439.

Assembled in Mexico

**Technical Support:**

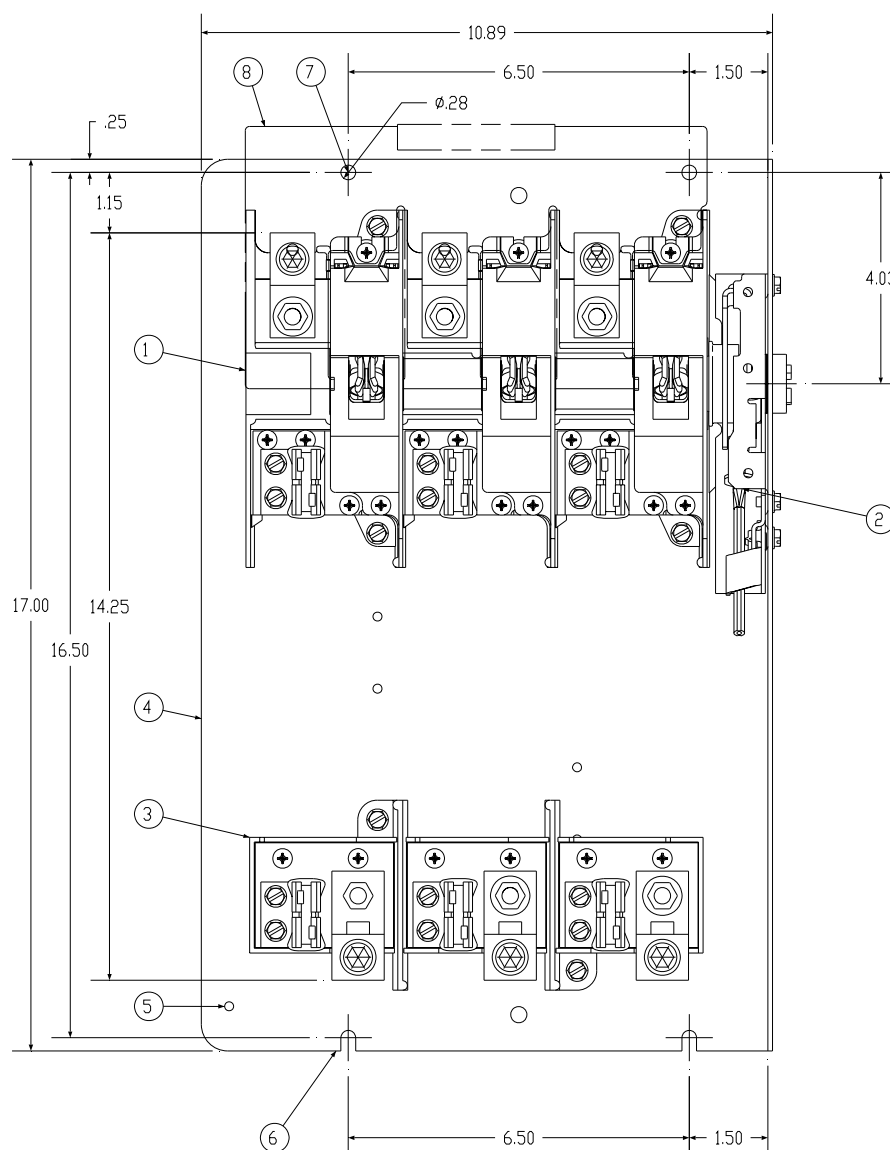
Toll Free: 1-800-241-4453

Internet: <http://www.sea.siemens.com/power>



### Component Data Sheet

	<p><b>⚠ Danger</b></p> <p><b>Hazardous Voltage.</b> Will cause death or serious injury.</p>	<p><b>⚠ Peligro</b></p> <p><b>Tensión peligrosa.</b> Puede causar la muerte o lesiones graves.</p>	<p><b>⚠ Danger</b></p> <p><b>Tension dangereuse.</b> Danger de mort ou risque de blessures graves.</p>
	<p>Turn off and lock out all power supplying this device before working on this device. Replace all covers before power supplying this device is turned on.</p>	<p>Desenergice totalmente antes de instalar o darle servicio. Reemplace todas las barreras y cubiertas antes de energizar el interruptor.</p>	<p>Couper l'alimentation de l'appareil et barrer avant de travailler. Remplacez tous les couverts avant que l'approvisionnement de pouvoir soit alimenté.</p>



- 1) Line Base Assembly (factory installed)
- 2) Mechanism Assembly (factory installed)
- 3) Load Base Assembly (factory installed)
- 4) Mounting Pan
- 5) Mounting hole for Ground Lug Kit, HG61234

- 6) Slotted Mounting Hole
- 7) Mounting Hole
- 8) Clear Line Shield (factory installed)
- 9) Pan Mounting Screws, (4) 1/4-20 X 1/2" (not shown)

# SIEMENS

**Cat. No. VBFS364**  
**200 Amp Maximum**  
**Suitable for use in NEMA Type 1/3R/4X/12 enclosures**  
**Horsepower Ratings**

**Fusible Panel Mounted Disconnect Switch**  
**Maximum 600 Volts AC (V~)**

**Type VBII**  
**Maximum 600 Volts DC (V-)**

**SEE 500446AJ00 FOR HORSEPOWER TABLE**

Continuous load current not to exceed 80% of the rating of fuses employed in other than motor circuits.

Suitable for use as Service Equipment when used with ground bar kit HG61234 on 3 phase, 3 wire systems or when used with HN64 neutral kit on 1 phase, 3 wire or 3 phase, 4 wire systems.

## Fuse and Short Circuit Information

When used with Class K fuses, Class H fuses or a UL Listed Circuit Breaker rated for 10 000 amperes, RMS symmetrical, **600** volts maximum, this switch is suitable for use on a circuit capable of delivering not more than 10 000 amperes, RMS symmetrical, **600** volts, maximum.

When used with Class R fuses and Class R fuse clip kit **HR64** properly installed, this switch is suitable for use on a circuit capable of delivering not more than 200 000 amperes, RMS symmetrical, **600** volts maximum.

When used with Class J fuses with the load base relocated to the "J Fuse" position marked on the enclosure this switch is suitable for use on a circuit capable of delivering not more than 200 000 amperes, RMS symmetrical, **600** volts maximum.

When used with Class T fuses and Class T fuse adaptor kit **HT64** properly installed, this switch is suitable for use on a circuit capable of delivering not more than 200 000 amperes, RMS symmetrical, **600** volts maximum.

**Danger** – Unless Class R, J or T fuses are used, this switch may present a risk of fire and injury to persons if installed on circuits capable of delivering more than 10 000 amperes, RMS symmetrical.

When used with fuses marked with DC ratings, this switch is suitable for use on a circuit capable of delivering not more than the DC interrupting rating marked on the fuse, at the DC voltage rating marked on the fuse, up to a maximum of 10 000 amperes, **600** volts DC.

**Danger** – Unless fuses marked for an interrupting rating of 10 000 amperes at **600** volts DC are used, this switch may present a risk of fire and injury to persons if installed on circuits capable of delivering more than 10 000 amperes.

Renewable link fuses are not recommended.

## Terminal Information

## USE 75°C COPPER OR ALUMINUM WIRE

Description	Wire Range	Wire Tightening Torque <sup>3</sup>	Lug Mounting Torque <sup>3</sup>
Line, Load & Main Neutral	6 AWG – 300 kcmil	275 lb-ins.	135 lb-ins.
Service Ground	14-1/0 AWG	35 lb-ins. 14-10 / 40 lb-ins. 8 AWG 45 lb-ins. 6-4 AWG / 50 lb-ins. 3-1/0 AWG	80 lb-ins.

**UL Listed Compression Lugs (Refer to manufacturers instructions for proper installation)**

**SEE 500445F00 FOR COMPRESSION LUG TABLE**

## Accessories

Aux. Switch (1NO - 1NC)	HA161234	Neutral	HN64	Class R Fuse Kit (Rejects Class H & K Fuses)	HR64
Aux. Switch (2NO - 2NC)	HA261234	200% Neutral	HN264	Class T Fuse Kit	—
Aux. Switch (1NO - 1NC)	HA361234	Ground Lug Kit (Wire Range 14-4 AWG)	HG61234	Compression Lug Neutral Barrier	—
Copper Lug Kit	HLC64	Fuse Puller Kit (3 Per Kit)	HP63	Compression Lug Mounting Kit	—

## Replacement Parts

Line Base	HFB64	Replacement Lug Kit	HL64	Load Base	HBB64
-----------	-------	---------------------	------	-----------	-------

<sup>1</sup> Use outer two poles.

<sup>2</sup> The starting current of motors more than the standard horsepower or kilowatt ratings may require the use of fuses with appropriate time delay characteristics.

<sup>3</sup> When tightening or replacing connectors, refer to lug mounting torque in Terminal & Wire Information Table.

Assembled in Mexico

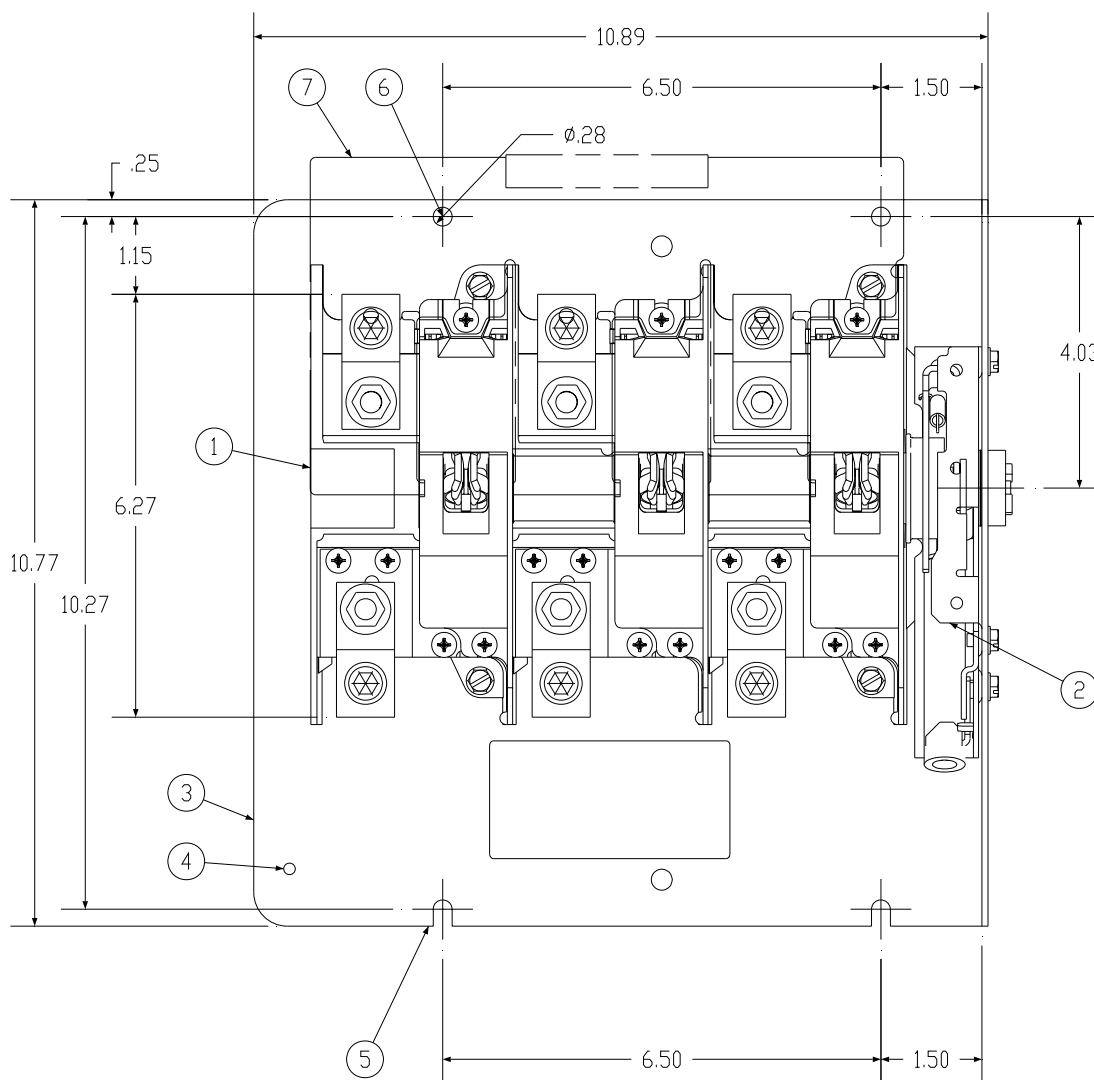
**Technical Support:**

Toll Free: 1-800-241-4453

Internet: <http://www.sea.siemens.com/power>

### Component Data Sheet

	<p><b>⚠ Danger</b></p> <p><b>Hazardous Voltage.</b> Will cause death or serious injury.</p>	<p><b>⚠ Peligro</b></p> <p><b>Tensión peligrosa.</b> Puede causar la muerte o lesiones graves.</p>	<p><b>⚠ Danger</b></p> <p><b>Tension dangereuse.</b> Danger de mort ou risque de blessures graves.</p>
	<p>Turn off and lock out all power supplying this device before working on this device. Replace all covers before power supplying this device is turned on.</p>	<p>Desenergice totalmente antes de instalar o darle servicio. Reemplace todas las barreras y cubiertas antes de energizar el interruptor.</p>	<p>Couper l'alimentation de l'appareil et barrer avant de travailler. Remplacez tous les couverts avant que l'approvisionnement de pouvoir soit alimenté.</p>



- 1) Line Base Assembly (factory installed)
- 2) Mechanism Assembly (factory installed)
- 3) Mounting Pan
- 4) Mounting hole for Ground Lug Kit, HG61234
- 5) Slotted Mounting Hole

- 6) Mounting Hole
- 7) Clear Line Shield (factory installed)
- 8) Pan Mounting Screws, (4) 1/4-20 X 1/2" ( not shown )

# SIEMENS

**Cat. No. VBNFS364**  
**200 Amp Maximum**

**Non-Fusible Panel Mounted Disconnect Switch**  
**Maximum 600 Volts AC (V~)**

**Type VBII**  
**Maximum 600 Volts DC (V-)**

**Suitable for use in NEMA Type 1/3R/4X/12 enclosures**

## Horsepower Ratings

**SEE 500446AJ00 FOR HORSEPOWER TABLE**

Suitable for use as Service Equipment when used with ground bar kit HG61234 on 3 phase, 3 wire systems or when used with HN64 neutral kit on 1 phase, 3 wire or 3 phase, 4 wire systems.

## Fuse and Short Circuit Information

This switch is suitable for use on a circuit capable of delivering not more than 200 000 amperes, RMS symmetrical, **600** volts maximum when protected by class J, R or T fuses rated **200** amperes maximum.

**Danger** – Unless Class J, R or T fuses are used to protect this switch, it may present a risk of fire and injury to persons if installed on circuits capable of delivering more than 10 000 amperes, RMS symmetrical.

This switch is suitable for use on a circuit capable of delivering not more than 10 000 amperes, RMS symmetrical, **600** volts maximum, when protected by Class K fuses, Class H fuses or a UL Listed Circuit Breaker rated for 10 000 amperes, RMS symmetrical, **600** volts maximum.

This switch is suitable for use on a circuit capable of delivering not more than 10 000 amperes, **600** volts DC maximum, when protected by fuses marked with an interrupting rating of 10 000 amperes, **600** volts DC.

**Danger** – Unless fuses marked for an interrupting rating of 10 000 amperes at **600** volts DC are used to protect this switch, this switch may present a risk of fire and injury to persons if installed on circuits capable of delivering more than 10 000 amperes.

## Terminal Information

## **USE 75°C COPPER OR ALUMINUM WIRE**

Description	Wire Range	Wire Tightening Torque <sup>2</sup>	Lug Mounting Torque <sup>2</sup>
Line, Load & Main Neutral	6 AWG – 300 kcmil	275 lb-ins.	135 lb-ins.
Service Ground	14-1/0 AWG	35 lb-ins. 14-10 / 40 lb-ins. 8 AWG 45 lb-ins. 6-4 AWG / 50 lb-ins. 3-1/0 AWG	80 lb-ins.

## **UL Listed Compression Lugs (Refer to manufacturers instructions for proper installation)**

**SEE 500445F00 FOR COMPRESSION LUG TABLE**

## Accessories

Aux. Switch (1NO - 1NC)	HA161234	Neutral	HN64	Class R Fuse Kit (Rejects Class H & K Fuses)	—
Aux. Switch (2NO - 2NC)	HA261234	200% Neutral	HN264	Class T Fuse Kit	—
Aux. Switch (1NO - 1NC)	HA361234	Ground Lug Kit (Wire Range 14-4 AWG)	HG61234	Compression Lug Neutral Barrier	—
Copper Lug Kit	HLC64	Fuse Puller Kit (3 Per Kit)	—	Compression Lug Mounting Kit	—

## Replacement Parts

Line Base	HNB64	Replacement Lug Kit	HL64	Load Base	—
-----------	-------	---------------------	------	-----------	---

<sup>1</sup> Use outer two poles.

<sup>2</sup> When tightening or replacing connectors, refer to lug mounting torque in Terminal & Wire Information Table.

Protected by one or more of the following US Patents: 6,134,979, 6,356,460, 5,990,439.

Assembled in Mexico

## **Technical Support:**

Toll Free: 1-800-241-4453

Internet: <http://www.sea.siemens.com/power>



# SIEMENS

**Cat. No. VBFS365**  
**400 Amp Maximum**  
**Suitable for use in NEMA Type 1/12 enclosures**  
**Horsepower Ratings**

**Fusible Panel Mounted Disconnect Switch**  
**Maximum 600 Volts AC (V~)**

**Type VBII**  
**Maximum 250 Volts DC (V-)**

**SEE 500446AN00 FOR HORSEPOWER TABLE**

Continuous load current not to exceed 80% of the rating of fuses employed in other than motor circuits.

## Fuse and Short Circuit Information

When used with Class K or H fuses, this switch is suitable for use on a circuit capable of delivering not more than 10,000 amperes, RMS symmetrical, **600** volts, maximum.

When used with Class R fuses and Class R fuse clip kit **HR656** properly installed, this switch is suitable for use on a circuit capable of delivering not more than 200 000 amperes, RMS symmetrical, **600** volts maximum.

When used with Class J fuses with the load base relocated to the "J Fuse" position marked on the enclosure or Class T fuses with the load base relocated to the "T Fuse" position marked on the enclosure, this switch is suitable for use on a circuit capable of delivering not more than 200 000 amperes, RMS symmetrical, **600** volts maximum.

**Danger** – Unless Class J, R or T fuses are used, this switch may present a risk of fire and injury to persons if installed on circuits capable of delivering more than 10 000 amperes, RMS symmetrical.

When used with fuses marked with DC ratings, this switch is suitable for use on a circuit capable of delivering not more than the DC interrupting rating marked on the fuse, at the DC voltage rating marked on the fuse, up to a maximum of 10 000 amperes, **250** volts DC.

**Danger** – Unless fuses marked for an interrupting rating of 10 000 amperes at **250** volts DC are used, this switch may present a risk of fire and injury to persons if installed on circuits capable of delivering more than 10 000 amperes.

Renewable link fuses are not recommended.

## Terminal Information

## USE 75°C COPPER OR ALUMINUM WIRE

Description	Wire Range	Wire Tightening Torque <sup>3</sup>	Lug Mounting Torque <sup>3</sup>
Line, Load & Main Neutral	(1) 1/0 AWG – 750 kcmil (2) 1/0 AWG – 250 kcmil	500 lb-ins.	80 lb-ins.
Service Ground	(2) 6 AWG – 300 kcmil	275 lb-ins	80 lb-ins.

Torque Fuse Clamp Mounting screws to 50 lb-ins

## UL Listed Compression Lugs (Refer to manufacturers instructions for proper installation)

**SEE 500445G00 FOR COMPRESSION LUG TABLE**

## Accessories

Aux. Switch (1NO - 1NC)	HA165678	Neutral	—	Class R Fuse Kit (Rejects Class H & K Fuses)	HR656
Aux. Switch (2NO - 2NC)	HA265678	200% Neutral	—	Class T Fuse Kit	—
Aux. Switch (1NO - 1NC)	HA365678	Ground Lug Kit (Wire Range 14-4 AWG)	HG656	Compression Lug Neutral Barrier	—
Copper Lug Kit	HLC65678	Fuse Puller Kit ( 3 Per Kit )	—	Compression Lug Mounting Kit	—

## Replacement Parts

Line Base	HFB65	Replacement Lug Kit	HL65678	Load Base	HBB656
-----------	-------	---------------------	---------	-----------	--------

<sup>1</sup> Use outer two poles.

<sup>2</sup> The starting current of motors more than the standard horsepower or kilowatt ratings may require the use of fuses with appropriate time delay characteristics.

<sup>3</sup> When tightening or replacing connectors, refer to lug mounting torque in Terminal & Wire Information Table.

Made in USA

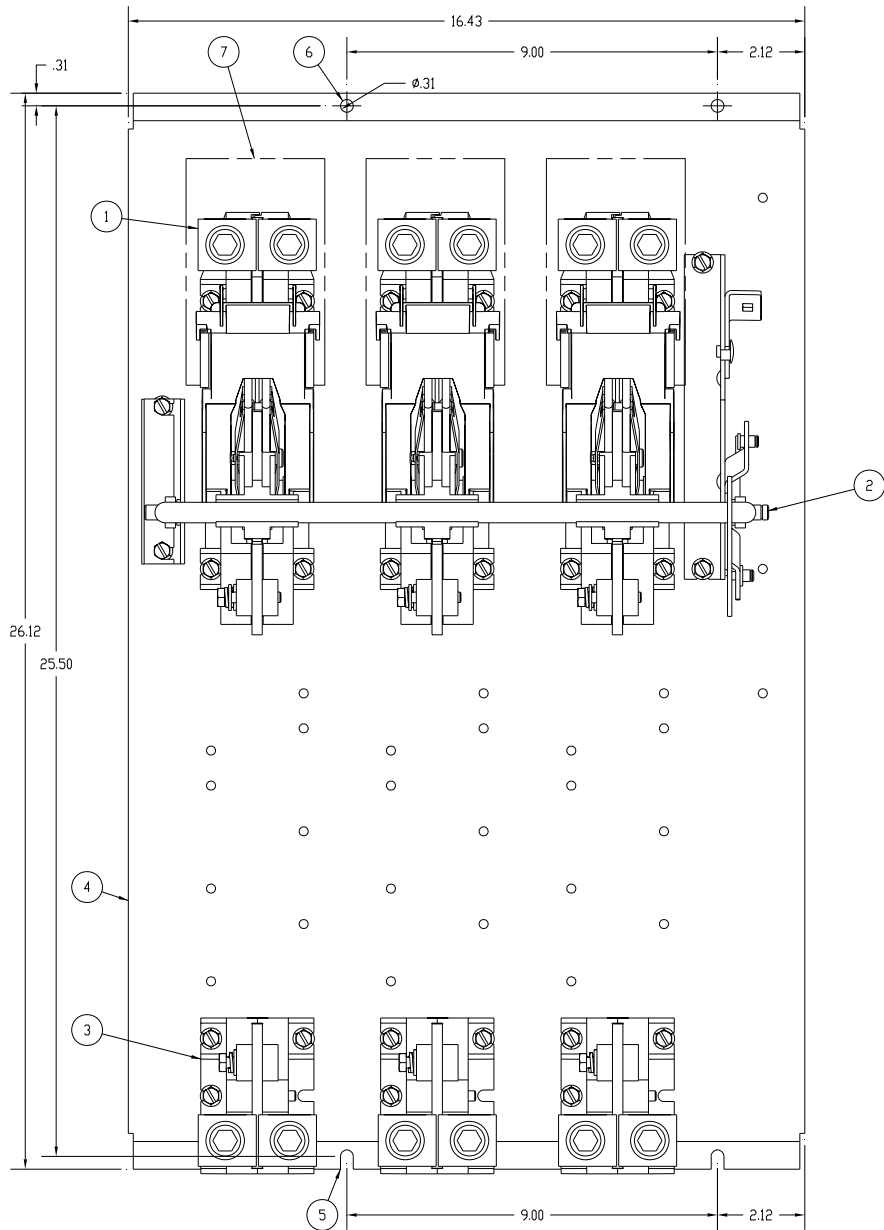
**Technical Support:**

Toll Free: 1-800-241-4453

Internet: <http://www.sea.siemens.com/power>

Component Data Sheet

 	<p><b>⚠ Danger</b></p> <p><b>Hazardous Voltage.</b> Will cause death or serious injury.</p> <p>Turn off and lock out all power supplying this device before working on this device. Replace all covers before power supplying this device is turned on.</p>	<p><b>⚠ Peligro</b></p> <p><b>Tensión peligrosa.</b> Puede causar la muerte o lesiones graves.</p> <p>Desenergice totalmente antes de instalar o darle servicio. Reemplace todas las barreras y cubiertas antes de energizar el interruptor.</p>	<p><b>⚠ Danger</b></p> <p><b>Tension dangereuse.</b> Danger de mort ou risque de blessures graves.</p> <p>Couper l'alimentation de l'appareil et barrer avant de travailler. Remplacez tous les couverts avant que l'approvisionnement de pouvoir soit alimenté.</p>
--	---	--	--



<p>1) Line Base Assembly (factory installed)</p> <p>2) Mechanism Assembly (factory installed)</p> <p>3) Load Base Assembly (factory installed)</p> <p>4) Mounting Pan</p> <p>5) Slotted Mounting Hole</p>	<p>6) Mounting Hole</p> <p>7) Clear Line Shield (factory installed)</p> <p>8) Pan Mounting Screws, (4) 1/4-20 X 1/2" ( not shown )</p>
---	--

# SIEMENS

**Cat. No. VBFS366**  
**600 Amp Maximum**  
**Suitable for use in NEMA Type 1/12 enclosures**  
**Horsepower Ratings**

**Fusible Panel Mounted Disconnect Switch**  
**Maximum 600 Volts AC (V~)**

**Type VBII**  
**Maximum 250 Volts DC (V-)**

**SEE 500446AX00 FOR HORSEPOWER TABLE**

Continuous load current not to exceed 80% of the rating of fuses employed in other than motor circuits.

## Fuse and Short Circuit Information

When used with Class K or H fuses, this switch is suitable for use on a circuit capable of delivering not more than 10,000 amperes, RMS symmetrical, **600** volts, maximum.

When used with Class R fuses and Class R fuse clip kit **HR656** properly installed, this switch is suitable for use on a circuit capable of delivering not more than 200 000 amperes, RMS symmetrical, **600** volts maximum.

When used with Class J fuses with the load base relocated to the "J Fuse" position marked on the enclosure or Class T fuses with the load base relocated to the "T Fuse" position marked on the enclosure, this switch is suitable for use on a circuit capable of delivering not more than 200 000 amperes, RMS symmetrical, **600** volts maximum.

**Danger** – Unless Class J, R or T fuses are used, this switch may present a risk of fire and injury to persons if installed on circuits capable of delivering more than 10 000 amperes, RMS symmetrical.

When used with fuses marked with DC ratings, this switch is suitable for use on a circuit capable of delivering not more than the DC interrupting rating marked on the fuse, at the DC voltage rating marked on the fuse, up to a maximum of 10 000 amperes, **250** volts DC.

**Danger** – Unless fuses marked for an interrupting rating of 10 000 amperes at **250** volts DC are used, this switch may present a risk of fire and injury to persons if installed on circuits capable of delivering more than 10 000 amperes.

Renewable link fuses are not recommended.

## Terminal Information

## USE 75°C COPPER OR ALUMINUM WIRE

Description	Wire Range	Wire Tightening Torque <sup>3</sup>	Lug Mounting Torque <sup>3</sup>
Line, Load & Main Neutral	(2) 1/0 AWG – 750 kcmil (4) 1/0 AWG – 250 kcmil	500 lb-ins.	80 lb-ins.
Service Ground	(2) 6 AWG – 300 kcmil	275 lb-ins	80 lb-ins.

Torque Fuse Clamp Mounting screws to 50 lb-ins

## UL Listed Compression Lugs (Refer to manufacturers instructions for proper installation)

**SEE 500445G00 FOR COMPRESSION LUG TABLE**

## Accessories

Aux. Switch (1NO - 1NC)	HA165678	Neutral	—	Class R Fuse Kit (Rejects Class H & K Fuses)	HR656
Aux. Switch (2NO - 2NC)	HA265678	200% Neutral	—	Class T Fuse Kit	—
Aux. Switch (1NO - 1NC)	HA365678	Ground Lug Kit (Wire Range (2) 14-2/0 AWG)	HG656	Compression Lug Neutral Barrier	—
Copper Lug Kit	HLC65678	Fuse Puller Kit ( 3 Per Kit )	—	Compression Lug Mounting Kit	—

## Replacement Parts

Line Base	HFB66	Replacement Lug Kit	HL65678	Load Base	HBB656
-----------	-------	---------------------	---------	-----------	--------

<sup>1</sup> Use outer two poles.

<sup>2</sup> The starting current of motors more than the standard horsepower or kilowatt ratings may require the use of fuses with appropriate time delay characteristics.

<sup>3</sup> When tightening or replacing connectors, refer to lug mounting torque in Terminal & Wire Information Table.

Made in USA

**Technical Support:**

Toll Free: 1-800-241-4453

Internet: <http://www.sea.siemens.com/power>





# SIEMENS

Cat. No. VBNFS365

Non-Fusible Panel Mounted Disconnect Switch

Type VBII

400 Amp Maximum

Maximum 600 Volts AC (V~)

Maximum 250 Volts DC (V-)

Suitable for use in NEMA Type 1/12 enclosures

Horsepower Ratings

**SEE 500446AP00 FOR HORSEPOWER TABLE**

## Fuse and Short Circuit Information

This switch is suitable for use on a circuit capable of delivering not more than 200 000 amperes, RMS symmetrical, **600** volts maximum when protected by class J, R, or T fuses rated **400** amperes maximum.

**Danger** – Unless class J, R or T fuses are used to protect this switch, it may present a risk of fire and injury to persons if installed on circuits capable of delivering more than 10 000 amperes, RMS symmetrical.

This switch is suitable for use on a circuit capable of delivering not more than 10 000 amperes, **250** volts DC, maximum, when protected by fuses marked with an interrupting rating of 10 000 amperes, **250** volts DC.

**Danger** – Unless fuses marked for an interrupting rating of 10 000 amperes at **250** volts DC are used to protect this switch, this switch may present a risk of fire and injury to persons if installed on circuits capable of delivering more than 10 000 amperes.

## Terminal Information

## USE 75°C COPPER OR ALUMINUM WIRE

Description	Wire Range	Wire Tightening Torque <sup>3</sup>	Lug Mounting Torque <sup>3</sup>
Line, Load & Main Neutral	(1) 1/0 AWG – 750 kcmil (2) 1/0 AWG – 250 kcmil	500 lb-ins.	80 lb-ins.
Service Ground	(2) 6 AWG – 300 kcmil	275 lb-ins	80 lb-ins.

## UL Listed Compression Lugs (Refer to manufacturers instructions for proper installation)

**SEE 500445G00 FOR COMPRESSION LUG TABLE**

## Accessories

Aux. Switch (1NO - 1NC)	HA165678	Neutral	—	Class R Fuse Kit (Rejects Class H & K Fuses)	—
Aux. Switch (2NO - 2NC)	HA265678	200% Neutral	—	Class T Fuse Kit	—
Aux. Switch (1NO - 1NC)	HA365678	Ground Lug Kit (Wire Range 14-4 AWG)	HG656	Compression Lug Neutral Barrier	—
Copper Lug Kit	HLC65678	Fuse Puller Kit ( 3 Per Kit )	—	Compression Lug Mounting Kit	—

## Replacement Parts

Line Base	HNB65	Replacement Lug Kit	HL65678	Load Base	—
-----------	-------	---------------------	---------	-----------	---

<sup>1</sup> Use outer two poles.

<sup>2</sup> The starting current of motors more than the standard horsepower or kilowatt ratings may require the use of fuses with appropriate time delay characteristics.

<sup>3</sup> When tightening or replacing connectors, refer to lug mounting torque in Terminal & Wire Information Table.

Made in USA

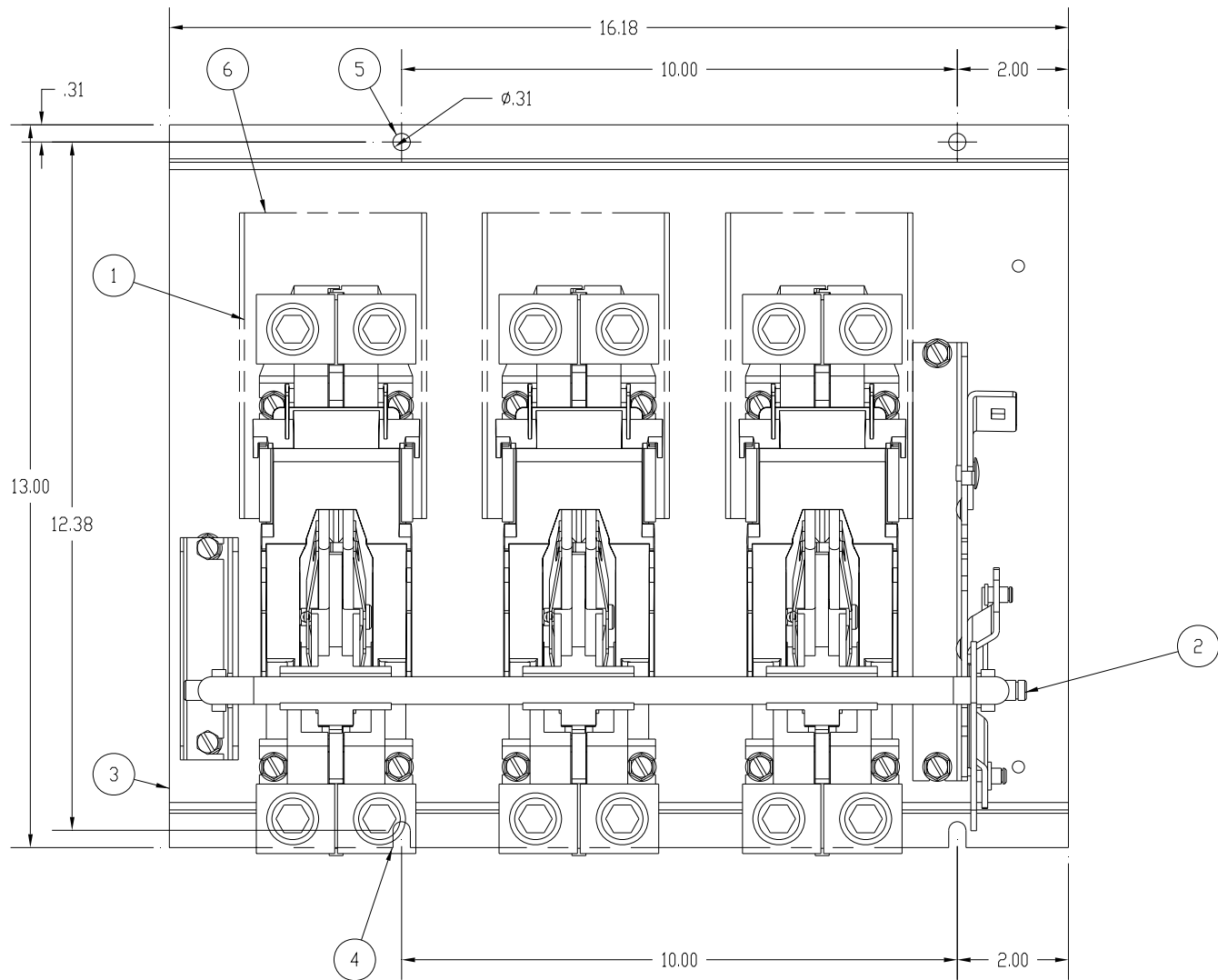
Technical Support:

Toll Free: 1-800-241-4453

Internet: <http://www.sea.siemens.com/power>

Component Data Sheet

	 <b>Danger</b>	 <b>Peligro</b>	 <b>Danger</b>
	<p><b>Hazardous Voltage.</b> Will cause death or serious injury. Turn off and lock out all power supplying this device before working on this device. Replace all covers before power supplying this device is turned on.</p>	<p><b>Tensión peligrosa.</b> Puede causar la muerte o lesiones graves. Desenergice totalmente antes de instalar o darle servicio. Reemplace todas las barreras y cubiertas antes de energizar el interruptor.</p>	<p><b>Tension dangereuse.</b> Danger de mort ou risque de blessures graves. Couper l'alimentation de l'appareil et barrer avant de travailler. Remplacez tous les couverts avant que l'approvisionnement de pouvoir soit alimenté.</p>



1) Line Base Assembly (factory installed)	6) Clear Line Shield (factory installed)
2) Mechanism Assembly (factory installed)	7) Pan Mounting Screws, (4) 1/4-20 X 1/2" ( not shown )
3) Mounting Pan	
4) Slotted Mounting Hole	
5) Mounting Hole	

# SIEMENS

Cat. No. VBNFS366

Non-Fusible Panel Mounted Disconnect Switch

Type VBII

600 Amp Maximum

Maximum 600 Volts AC (V~)

Maximum 250 Volts DC (V-)

Suitable for use in NEMA Type 1/12 enclosures

Horsepower Ratings

**SEE 500446AP00 FOR HORSEPOWER TABLE**

## Fuse and Short Circuit Information

This switch is suitable for use on a circuit capable of delivering not more than 200 000 amperes, RMS symmetrical, **600** volts maximum when protected by class J, R, or T fuses rated **600** amperes maximum.

**Danger** – Unless class J, R or T fuses are used to protect this switch, it may present a risk of fire and injury to persons if installed on circuits capable of delivering more than 10 000 amperes, RMS symmetrical.

This switch is suitable for use on a circuit capable of delivering not more than 10 000 amperes, **250** volts DC, maximum, when protected by fuses marked with an interrupting rating of 10 000 amperes, **250** volts DC.

**Danger** – Unless fuses marked for an interrupting rating of 10 000 amperes at **250** volts DC are used to protect this switch, this switch may present a risk of fire and injury to persons if installed on circuits capable of delivering more than 10 000 amperes.

## Terminal Information

## USE 75°C COPPER OR ALUMINUM WIRE

Description	Wire Range	Wire Tightening Torque <sup>3</sup>	Lug Mounting Torque <sup>3</sup>
Line, Load & Main Neutral	(2) 1/0 AWG – 750 kcmil (4) 1/0 AWG – 250 kcmil	500 lb-ins.	80 lb-ins.
Service Ground	(2) 6 AWG – 300 kcmil	275 lb-ins	80 lb-ins.

## UL Listed Compression Lugs (Refer to manufacturers instructions for proper installation)

**SEE 500445G00 FOR COMPRESSION LUG TABLE**

## Accessories

Aux. Switch (1NO - 1NC)	HA165678	Neutral	—	Class R Fuse Kit (Rejects Class H & K Fuses)	—
Aux. Switch (2NO - 2NC)	HA265678	200% Neutral	—	Class T Fuse Kit	—
Aux. Switch (1NO - 1NC)	HA365678	Ground Lug Kit (Wire Range 14-4 AWG)	HG656	Compression Lug Neutral Barrier	—
Copper Lug Kit	HLC65678	Fuse Puller Kit ( 3 Per Kit )	—	Compression Lug Mounting Kit	—

## Replacement Parts

Line Base	HNB66	Replacement Lug Kit	HL65678	Load Base	—
-----------	-------	---------------------	---------	-----------	---

<sup>1</sup> Use outer two poles.

<sup>2</sup> The starting current of motors more than the standard horsepower or kilowatt ratings may require the use of fuses with appropriate time delay characteristics.

<sup>3</sup> When tightening or replacing connectors, refer to lug mounting torque in Terminal & Wire Information Table.

Made in USA

Technical Support:

Toll Free: 1-800-241-4453

Internet: <http://www.sea.siemens.com/power>