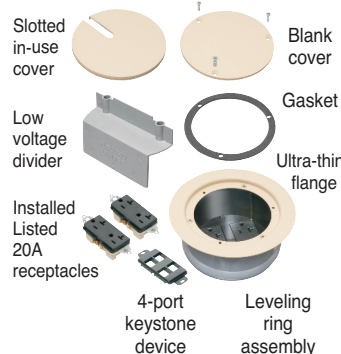
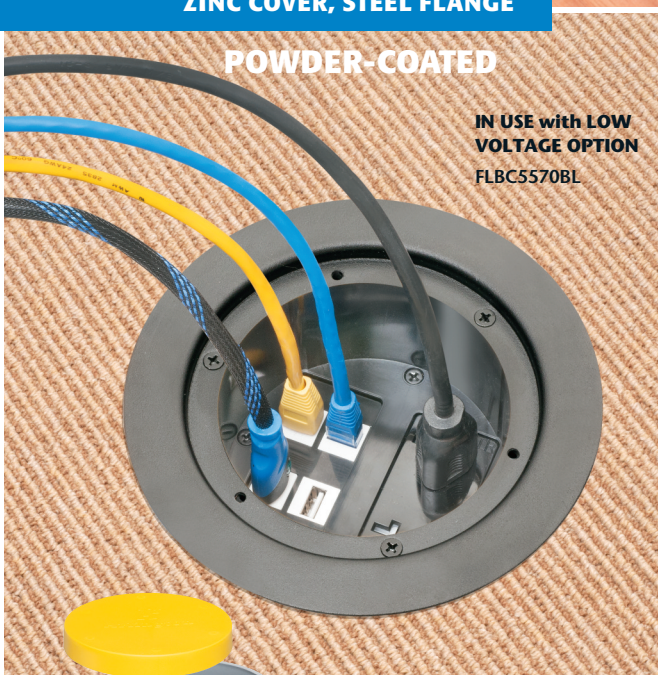


NEW!
more on
reverse

Floor Box, Recessed Cover Kits for New Concrete

Low Voltage Ports, Six Conduit Hubs in Box • Cover Kits with Two Devices



Arlington's FLBC5500 **FLOOR BOX** and FLBC5570 series **RECESSED COVER KITS** offer the *low cost, easy way* to a flush, Listed installation of a box and cover kit with two receptacles in a new concrete floor. *OR with a power and low voltage port in each side.*

Made of heavy-duty plastic, our new 5.5" non-metallic **concrete floor box** has six conduit hubs, four plugs and **MULTIPLE** options for positioning two low voltage dividers in the box *as needed.*

Recessed FLBC5570 cover kits come with *two* installed receptacles, ultra thin stamped steel flange, flush-to-floor in-use and blank covers, a low voltage divider and a four-port keystone device.

- Thin flange and recessed devices reduce tripping
- Installed UL Listed 20A tamper-resistant decorator-style receptacles
- Divider and 4-port keystone device supplied for low voltage option

NOW WITH DIVIDER FOR POWER/LOW VOLTAGE



Patents pending

- **Zinc cover, steel flange**
PLATED brass, nickel, antique bronze
POWDER-COATED black, brown, light almond



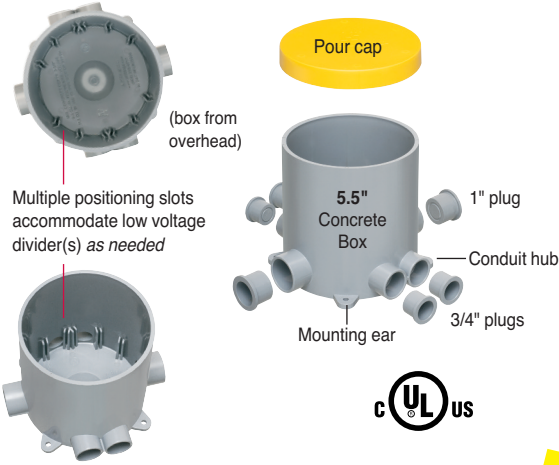
Arlington®

1 Stauffer Industrial Park
Scranton, PA 18517
800/233.4717 • Fax 570/562.0646
www.aifittings.com

FLBC5570 Cover Kits, FLBC5500 Concrete Floor Box

Put Receptacles or Power/Low Voltage in a New Concrete Floor!

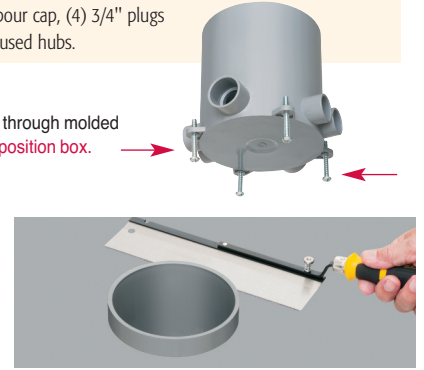
5.5" CONCRETE BOX



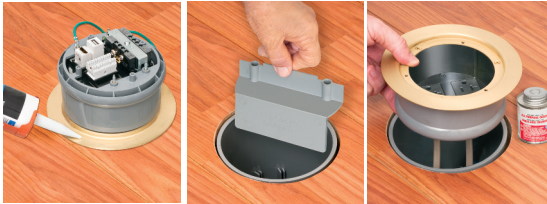
CATALOG NUMBER	UPC/DCI/NAED MFG. #018997	DESCRIPTION CONCRETE FLOOR BOX FOR NEW CONCRETE	UNIT PKG	STD PKG
FLBC5500	21190	5.5" Non-metallic Round Box with (6) Conduit Hubs cULus Listed. Includes pour cap, (4) 3/4" plugs and (2) 1" plugs for unused hubs.	1	5

EASY TO INSTALL

- 1 Set concrete floor box into position. Secure in place through molded mounting ears. **Option:** Use 1/4-20 screws to level/position box.
- 2 Install conduit as needed using PVC cement. Pull wires through conduit as required.
- 3 Install plugs (provided) with PVC cement to seal unused openings.
- 4 Install pour cap. Pour concrete to finished depth.
- 5 After concrete has cured, remove pour cap. Use saw to cut box to finished floor height.

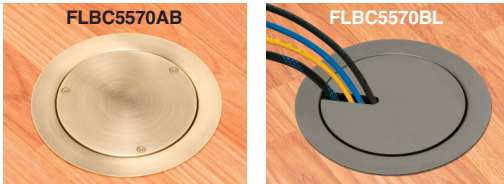


RECESSED COVER KITS for 5.5" CONCRETE BOX



- 1 Wire receptacles. Seal underside of flange with silicone sealant if desired (not included).
- 2 **Option:** For low voltage, install divider in box. Remove installed receptacle from cover, substitute keystone device.
- 3 After installing flooring secure leveling ring assembly to floor with PVC cement applied around flange.

Cover options Install gasket and blank with #8-32 x 5/8" screws or install in-use cover (no screws required).



CATALOG NUMBER	UPC/DCI/NAED MFG. #018997	DESCRIPTION FINISH/COLOR	RECESSED COVER KITS WITH TWO INSTALLED RECEPTACLES	UNIT/STD PKG
with PLATED DIECAST ZINC BLANK COVER and IN-USE SLOTTED COVER • PLATED STEEL FLANGE				
FLBC5570MB	21176	Brass-plated cover and flange, Black Decorator Style Receptacles		1
FLBC5570NL	21177	Nickel-plated cover and flange, Black Decorator Style Receptacles		1
FLBC5570AB	21172	Antique Bronze-plated cover and flange, Black Decorator Style Receptacles		1



CATALOG NUMBER	UPC/DCI/NAED MFG. #018997	DESCRIPTION FINISH/COLOR	RECESSED COVER KITS WITH TWO INSTALLED RECEPTACLES	UNIT/STD PKG
POWDER-COATED DIECAST ZINC BLANK COVER and IN-USE SLOTTED COVER • POWDER-COATED STEEL FLANGE				
FLBC5570BL	21173	Black cover and flange, Black Decorator Style Receptacles		1
FLBC5570BR	21174	Brown cover and flange, Black Decorator Style Receptacles		1
FLBC5570LA	21175	Light Almond cover and flange, Black Decorator Style Receptacles		1



Patents pending

Arlington®

1 Stauffer Industrial Park
Scranton, PA 18517
800/233.4717 • Fax 570/562.0646
www.aifittings.com

FLBR5570 KITS INCLUDE

Non-metallic leveling ring assembly with two installed UL Listed, tamper-resistant 20A decorator-style receptacles, blank cover with gasket, in-use slotted plug cover, low voltage divider, 4-port keystone device, (3) #8-32 x 5/8" flat head screws

Distributed by