

Project: _____ Type: _____

Drawn by: _____ Catalogue #: _____ Date: _____

Individual Spec Sheet

TRADITIONAL RECESSED

ORDERING INFORMATION

Order code: 62703
Model number: RF3/TRIM/GMB/WH/STD
UPC: 069549627031
Case quantity: 24

PHYSICAL DATA

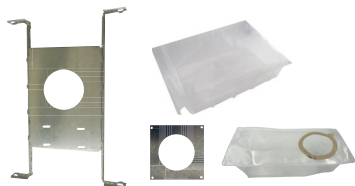
Type: Gimbal
Shape: Round
Size in. (mm): 3 7/8 (98.5)
Finish: White

PERFORMANCE DATA

Compatible Lamp: MR16 GU10
Beam angle: 35

COMPATIBLE ACCESSORIES

Order code	Model number	Type
66047	ACC/MPLATE/3.25IN/SQR/STD	Square mounting plate
66054	ACC/MPLATE/3.25IN/ADJ/STD	Adjustable mounting plates
62673	ACC/MPLATE/3.25IN/HANG.BARS/STD	Mounting plates with hanger bars
66142	ACC/3/VAPOR BARRIER/STD	Vapor barrier extender



Safety glass included, only to be installed with an open style lamp. Not suitable for LED technology.
 This lighting equipment complies with Canadian standard ICES-005 for use in residential applications.
 Data is based upon tests performed in a controlled environment.
 Actual performance can vary depending on operating conditions. Specifications are subject to change without notice.
 For complete warranty information, please visit www.standardpro.com



1^{yr}
warranty

6
damp
location

50w
maximum
per lamp



Qty	Description	Price

I accept the specifications of the luminaire configuration mentioned above.

Name: _____

Company: _____

Signature: _____

Date: _____

**Data is based upon tests performed in a controlled environment. Actual performance can vary depending on operating conditions.
 All products are subject to change or may be discontinued any time without notice.**