



MR16 with Cover Glass

EYE MR16 low voltage, cover glass lamps offer consistent colour and brightness with a special long lasting dichroic reflector. The cover glass offers an additional layer of protection against UV emission.

Features

- Crisp white light
- Long life
- Long lasting dichroic coating
- Precise optical design

Applications

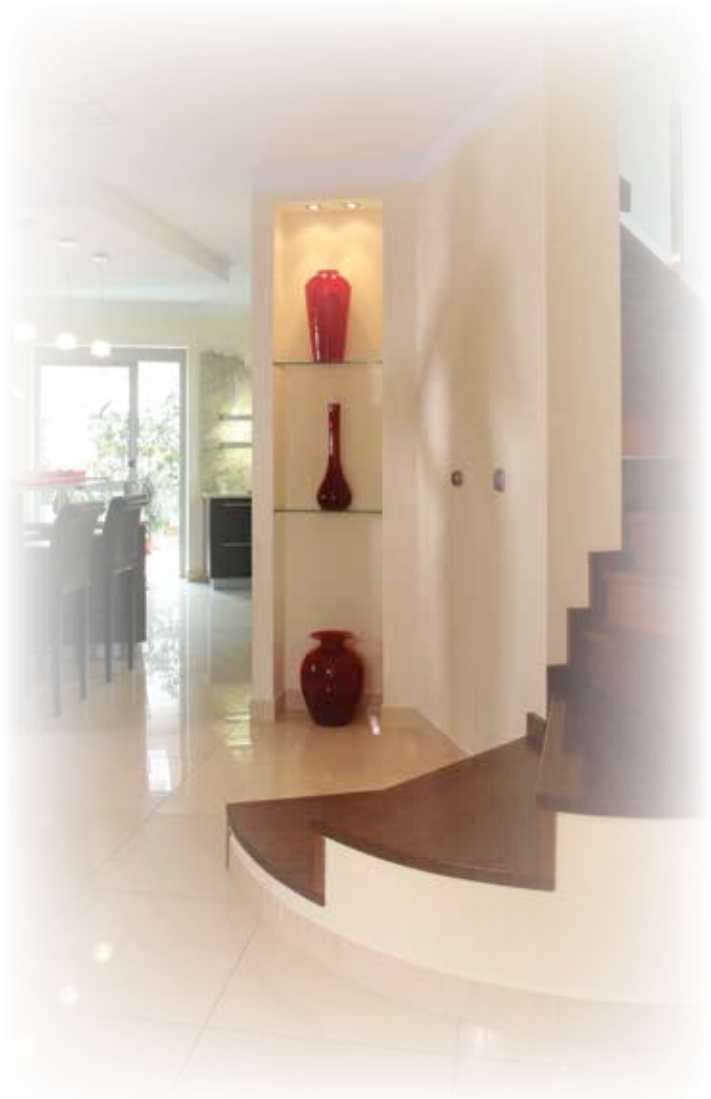
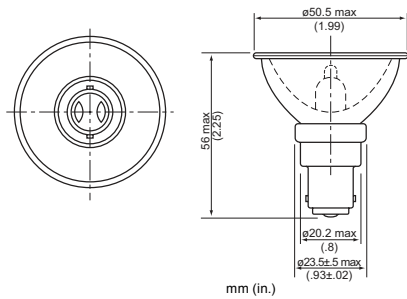
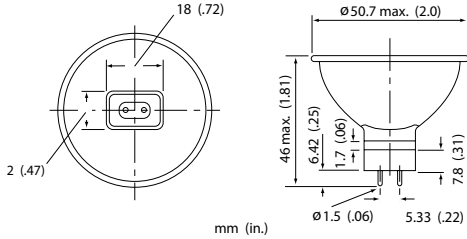
- Display cases
- Track and recessed lighting
- Restaurants and lounges
- Offices
- Showrooms
- Retail stores
- Residential

Order code	Description	ANSI code	Watts (W)	Base	Volts (V)	Colour temp. (K)	Beam angle (°)	CBCP*	Average life (hrs)	MOL** (in.) (mm)	Pack/Case Qty
15340	20MR16CG/NFL BBF EYE	BBF	20	GU5.3	12	2 950	23	880	4 000	1.81 46	12/120
30356	20MR16CG/FL BAB EYE	BAB	20	GU5.3	12	2 950	36	500	4 000	1.81 46	12/120
30360	35MR16CG/SP FRB EYE	FRB	35	GU5.3	12	3 050	12	7 600	5 000	1.81 46	12/120
15341	35MR16CG/NFL FRA EYE	FRA	35	GU5.3	12	3 050	23	2 300	5 000	1.81 46	12/120
30366	35MR16CG/FL FMW EYE	FMW	35	GU5.3	12	3 050	36	1 100	5 000	1.81 46	12/120
30373	42MR16/FL/CG/EYP EYE	EYP	42	GU5.3	12	3 050	38	1 100	5 000	1.81 46	12/120
15342	50MR16CG/SP EXT EYE	EXT	50	GU5.3	12	3 050	12	9 800	5 000	1.81 46	12/120
30378	50MR16CG/MFL ENL EYE	ENL	50	GU5.3	12	3 050	32	2 250	5 000	1.81 46	12/120
30141	50MR16CG/FL EXN EYE	EXN	50	GU5.3	12	3 050	36	1 600	5 000	1.81 46	12/120
15344	50MR16CG/WFL FNV EYE	FNV	50	GU5.3	12	3 050	55	700	5 000	1.81 46	12/120
15345	65MR16CG/SP FPA EYE	FPA	65	GU5.3	12	3 050	13	12 000	5 000	1.81 46	12/120
15346	65MR16CG/NFL FPC EYE	FPC	65	GU5.3	12	3 050	26	4 100	5 000	1.81 46	12/120
15348	65MR16CG/FL FPB EYE	FPB	65	GU5.3	12	3 050	38	2 100	5 000	1.81 46	12/120
55600	75MR16CG/EYF EYE	EYF	75	GU5.3	12	3 050	13	12 500	5 000	1.81 46	12/120
55601	75MR16CG/EYJ EYE	EYJ	75	GU5.3	12	3 050	26	4 400	5 000	1.81 46	12/120
55602	75MR16CG/EYC EYE	EYC	75	GU5.3	12	3 050	44	2 200	5 000	1.81 46	12/120
15417	20MR16CG/DC/NSP ESX EYE	ESX	20	BA15d	12	2 950	9	4 000	4 000	2.25 56	12/120
15421	50MR16CG/DC/SP EXT EYE	EXT	50	BA15d	12	3 050	12	9 800	5 000	2.25 56	12/120
15423	50MR16CG/DC/MFL ENL EYE	ENL	50	BA15d	12	3 050	32	2 250	5 000	2.25 56	12/120

* Center Beam Candle Power
 ** Conversions may vary slightly



MR16 with Cover Glass



Photometrics MR16 with Cover Glass

20 watts

Beam angle: 23°

Ø (in.)	H(ft)	(fc)
16 1/2	3' 3 3/8"	82
32 1/2	6' 6 1/2"	20
48 1/17	9' 10 1/8"	9

15340

Beam angle: 36°

Ø (in.)	H(ft)	(fc)
25 1/16	3' 3 3/8"	45
50 25/32	6' 6 1/2"	11
76 1/4	9' 10 1/8"	5

30356

35 watts

Beam angle: 12°

Ø (in.)	H(ft)	(fc)
8 1/2	3' 3 3/8"	706
16 1/16	6' 6 1/2"	177
24 1/16	9' 10 1/8"	78

30360

Beam angle: 23°

Ø (in.)	H(ft)	(fc)
15 1/4	3' 3 3/8"	214
31 1/2	6' 6 1/2"	54
47 1/4	9' 10 1/8"	24

15341

Beam angle: 36°

Ø (in.)	H(ft)	(fc)
25 1/16	3' 3 3/8"	99
50 25/32	6' 6 1/2"	24
76 1/4	9' 10 1/8"	11

30366

42 watts

Beam angle: 38°

Ø (in.)	H(ft)	(fc)
27 1/2	3' 3 3/8"	102
54 1/2	6' 6 1/2"	26
81 1/2	9' 10 1/8"	11

30373

50 watts

Beam angle: 12°

Ø (in.)	H(ft)	(fc)
8 3/2	3' 3 3/8"	882
16 1/32	6' 6 1/2"	221
24 1/16	9' 10 1/8"	97

15342/15421

Beam angle: 32°

Ø (in.)	H(ft)	(fc)
22 1/16	3' 3 3/8"	209
44 7/8	6' 6 1/2"	52
67 1/16	9' 10 1/8"	23

30378/15423

Beam angle: 36°

Ø (in.)	H(ft)	(fc)
25 1/16	3' 3 3/8"	144
50 25/32	6' 6 1/2"	36
76 1/4	9' 10 1/8"	15

30141

Beam angle: 55°

Ø (in.)	H(ft)	(fc)
40 1/16	3' 3 3/8"	63
80 7/8	6' 6 1/2"	15
122 27/32	9' 10 1/8"	6

15344

65 watts

Beam angle: 13°

Ø (in.)	H(ft)	(fc)
9 1/16	3' 3 3/8"	1115
18 1/8	6' 6 1/2"	279
27 1/2	9' 10 1/8"	124

15345

Beam angle: 26°

Ø (in.)	H(ft)	(fc)
18 1/8	3' 3 3/8"	381
36 1/2	6' 6 1/2"	96
54 1/2	9' 10 1/8"	43

15346

Beam angle: 38°

Ø (in.)	H(ft)	(fc)
26 25/32	3' 3 3/8"	195
53 1/32	6' 6 1/2"	49
80 3/16	9' 10 1/8"	21

15348

75 watts

Beam angle: 13°

Ø (in.)	H(ft)	(fc)
9 1/16	3' 3 3/8"	1180
18 1/8	6' 6 1/2"	295
27 1/2	9' 10 1/8"	131

55600

Beam angle: 26°

Ø (in.)	H(ft)	(fc)
18 1/8	3' 3 3/8"	409
36 1/2	6' 6 1/2"	102
54 1/2	9' 10 1/8"	45

55601

Beam angle: 44°

Ø (in.)	H(ft)	(fc)
31 1/8	3' 3 3/8"	204
63 3/2	6' 6 1/2"	51
95 1/2	9' 10 1/8"	23

55602