

LEDP-CLIPS

Recessed Mounting Clips for FORUM LED Panels
Recess Lighting

Job Information		
Project Name		Type
Location		
Quantity		Date
Contact/Phone		
Notes		

Features

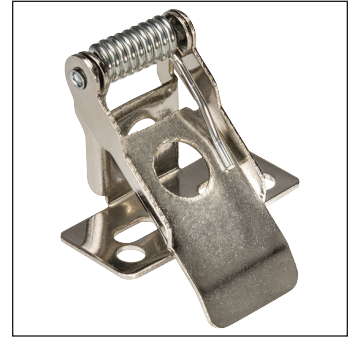
Construction

Chrome-plate steel clips with pressure spring to ensure sound and secure mounting.

Compatibility

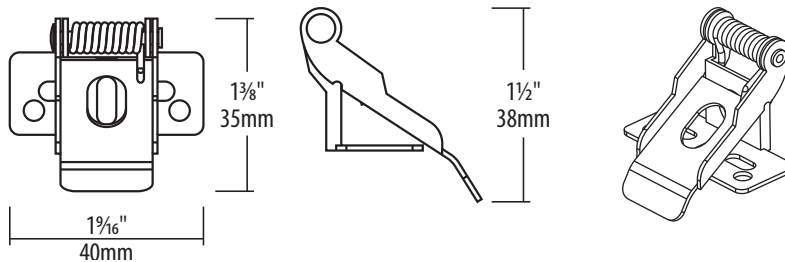
These clips are compatible with all FORUM LED panels. Used to install the FORUM LED panels in wood, drywall or metal with cut hole. It accommodates mediums with thicknesses 1/4" - 3/8".

Compatible Panel	No. of Clips Required
LEDP-6I2-WH	4
LEDP-6I4-WH	6
LEDP-6I6-WH	8
LEDP-11-WH	2
LEDP-12-WH	4
LEDP-14-WH	6
LEDP-22-WH	4
LEDP-24-WH	6



Description

Recessed mounting clips for use with all FORUM LED panels. Allows panels to be installed in wood, drywall or metal. They are ideal for use in spaces where recessed mounting is not possible.



Notes: Accessories are sold separately. For additional options please consult your Liteline representative.
Due to our continued efforts to improve our products, product specifications are subject to change without notice.

Ordering Guide



LEDP-CLIPS

Recessed mounting clips for use with FORUM LED panels.