

SAFETY

OPERATING &

MAINTENANCE

INSTRUCTIONS

MD6 SERIES HYTOOL™

MD6, MD6-6, MD6-37, MD6-38



BURNDY® ENGINEERED SYSTEM
For connection installation information,
scan this code with your mobile device.



TABLE OF CONTENTS

Safety Information	3
Introduction & Specifications	4
Accessories	5
Features & Benefits	6
Tool Alignment Inspection.....	6
Component Identification.....	7
Parts List.....	8
Tool Operation Procedures.....	9
Care & Maintenance.....	9
Cleaning Recommendations	9
Tool Variations	9
Accessories (Pictorials)	10

For information only contact:

BURNDY® Tool Service Center
 150 Burndy Road
 Littleton, NH 03561
 Or Call, Toll Free 1-800-426-8720

Additional or replacement manuals may be obtained free of charge from the BURNDY® Tool Service Center.

SAFETY INFORMATION



The above symbols are used to call your attention to instructions concerning your personal safety. Look for these symbols; read and follow the instructions that accompany them. Failure to follow the safety information provided can lead to serious personal injury or death.

SAFETY FIRST

! WARNING



The information provided in this manual is essential for the safe handling, operation, and maintenance of the BURNDY® MD Series. The operator must read, understand, and follow these instructions and ALL safety warnings and labels before operating these tools.




- Only use these tools in accordance with the manufacturer's specifications. Other use of these tools may lead to serious personal injury or death.

Each employer shall instruct each employee and user in the recognition and avoidance of unsafe working conditions and the laws and regulations applicable to his/her work environment to control or eliminate any hazards or other exposure to illness or injury. Reference: US OSHA 29CFR 1910 et seq.

If a conflict arises between the material contained in this manual, rules of the user, his/her employer or company, and legal or industry guidelines the more stringent rules take precedence and must be followed.

Observe and follow all other safety rules and regulations for the job.

Safety is everyone's responsibility.

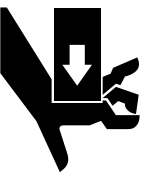
<u>SYMBOL</u>	<u>MEANING</u>
	Hazards that, if not avoided, will result in severe injury or death.
	Hazards that, if not avoided, could result in severe injury or death.
	Hazards that, if not avoided, could result in minor or moderate injury.
	Read and follow the operator's manual before using tool.
	Wear eye protection and personal protective equipment.

OPERATING SAFETY PRECAUTIONS

WARNING



This tool is NOT insulated for use on or near energized conductors. Use of this tool near energized conductors may lead to electrical shock, causing severe injury or death.



Pinch point hazard. Tool jaws operate at high speed and force and can cause severe personal injury. Keep all body parts away from moving parts of the tool, especially the area of the head and indenters during operation.



Do NOT over-reach while operating this tool. Loss of balance can cause serious personal injury or death. Move closer to work area and securely support yourself and your work. ALWAYS keep proper footing and balance.



Projectile hazard. Wear eye protection and personal protective equipment.



Explosive hazard. Do NOT use tool in an explosive environment.

Use

Tools have been specifically designed for use with BURNDY® products. Use of non-BURNDY® products is limited to those which conform to BURNDY® technical specifications applicable to Tools. Use of non-BURNDY®, non-conforming products with the tool shall be deemed misuse or abuse.

TYPE MD6 HYTOOL™

Hand-Operated Tool

The MD6 TYPE HYTOOL™ series are hand operated tools that use permanent die grooves, and/or insertable BURNDY® “W” type dies. They install a full range of BURNDY® connectors including service entrance, splices, terminals, stacking lugs, street light, stirrup, and repair sleeves, etc. Certain versions are available for specific installation applications. The MD6-8 installs almost all of the line, pole, and house connections in the BURNDY® Compression Connector Program with only one (1) extra die set, the W-BG. The tool has two (2) permanent die grooves, “O” and “D3” for distribution tap connectors. The “D3” groove also serves as a seat for die inserts to install additional connectors. The die inserts snap into the permanent “D3” die holder groove easily with one hand, and are secured with the spring loaded, positive lock, die retainer buttons.

All MD6 tools incorporate an over center toggle action mechanism allowing for easy crimping operations, and field adjustability.

SPECIFICATIONS

Crimp Force Developed.....9,000 lbs. (4,091 kg)

Weight (tool only).....6 lbs. (2.7 kg)

Tool lengths

MD6, MD6-6, & MD6-8 25- $\frac{3}{8}$ " (645 mm)

MD6-37, MD6-3821- $\frac{5}{8}$ " (549 mm)

FOR USE ON:

- Copper taps from #10 solid - #2/0 Stranded
- Aluminum/ACSR taps from #14 solid - #4/0 ACSR
- Stirrups from #6 Awg - #4/0 ACSR
- Copper & Aluminum code conductor connectors from #6 Awg - #4/0 stranded
- Overhead Full Tension Deadend, Full & Non Tension Splices & Terminals from #10 stranded - #4/0 ACSR
- 5/8" & .840" Service entrance sleeves
- INSULINK™ type ES (insulated) #10 - #1/0 Awg
- LINKIT™ type YSU (bare) #8 - #1/0 Awg (YSD-#4/0)
- HYDENT™ CU & AL terminals/splices #8 - #4/0 Awg
- HYSPLICE™ for Copper, copperweld, & AAC conductors
- UNISPLICE™ for AAC, ACSR, AAAC conductors
- HYPLUG™, HYSEALUG™, & HYSEALPLUG™ connectors
- Stacking HYLUG™ and disconnectable terminals

Please refer to the BURNDY® *Master Catalog* for more detailed use and application data.

ACCESSORIES

- Vinyl jaw edge covers for allCatalog#MD6CP1 MD6 type tools except MD6-6
- Neoprene jaw cover for.....Catalog #PT6744 MD6-6 "snub-nose" tool
- Metal carry case.....Catalog #PT4952-1 Holds (1) tool and up to 18 "W" dies
- Canvas carry bag hold all.....Catalog #PT4925 styles of MD tools & 9 "W" dies
- Plastic Case, Holds 12 sets of W-dies...CASEWDIES
- Cutter dies for #4 - #4/0.....Catalog #W-28K ACSR, Aluminum, Copper

FEATURES

- High strength bent, hickory wood handles on types MD6, MD6-6, MD6-8, MD6-37, MD6-38
- Time-proven steel jaw design
- Adjustable tool mechanism

- 90,000+ crimp/cycle life

- Positive lock, spring loaded die retainer buttons
- Permanent “D3” die groove
- PTFE impregnated steel/bronze bushings and stainless steel pins

BENEFITS

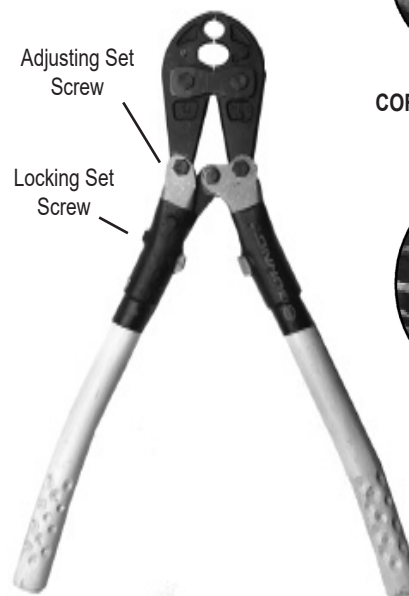
- Long life, ease of operation due to bent handle design
- Proper crimps are assured with butting jaws
- Easily field adjustable with orange alignment groove for visual check
- Lasts up to 5 times longer than imitations - still working when others have long since worn out

- No lost dies and easy, one hand die insertion
- Uses most all of BURNDY® “W” & “X” die inserts
- Increases life of tool by reducing tool wear and friction

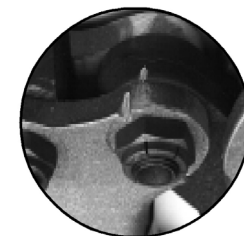
TOOL INSPECTION & ADJUSTMENT PROCEDURE

Tools should be checked periodically for correct adjustment. As with any tool, a slight amount of wear may occur over time. This wear may be corrected by readjusting the MD6 type tool(s) as follows:

1. Remove any die inserts from the tool and make sure the jaw tips are free of dirt, etc.
2. Open tool and close handles until jaw tips just touch. **DO NOT CLOSE HANDLES COMPLETELY!**
3. Check that the index marks (orange grooves) on the toggle link and frame line up.
4. If the marks line up, the tool is in proper adjustment.
5. If they do not line up, loosen the locking set screw using a 1/4” (6.4 mm) hex key, then turn the adjustment screw clockwise or counter-clockwise until the marks line up.
6. Tighten the locking set screw securely; your tool is now properly adjusted and ready for use.

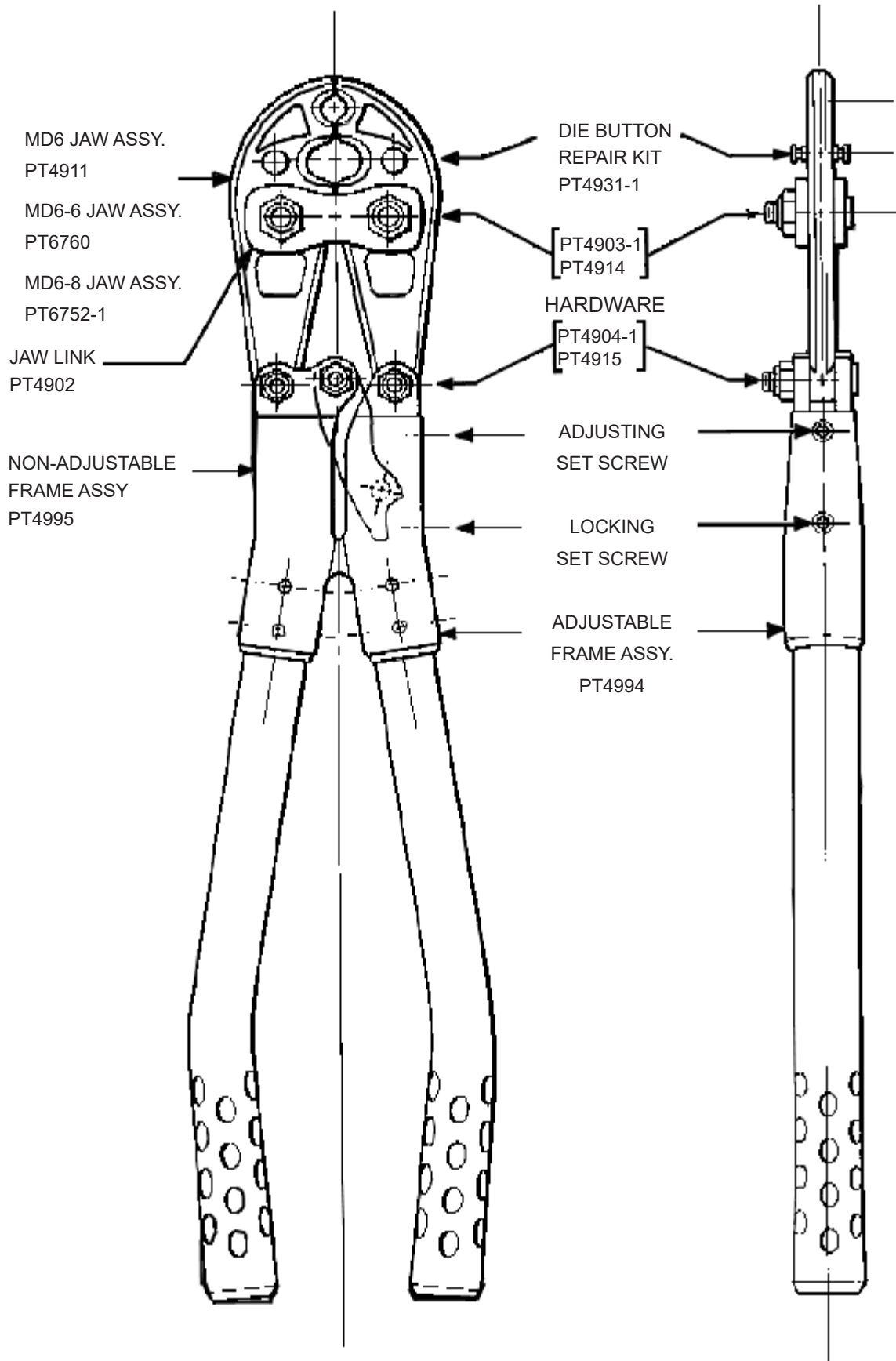


CORRECT: Index Marks Line Up



Adjustment Required

MD SERIES HYTOOL™



MD6 SERIES HYTOOL™ PARTS LIST

Sub Assemblies	Part Number	Qty.	Description
MD6 Jaw Assy. PT #4911	PT4901-1	2	MD6 Jaw
	PT6754-1	2	MD6-6 Jaw
MD6-6 Jaw Assy. PT #6760	PT6739-2	2	MD6-8 Jaw
	PT4923	2	Lubricated Bushing
MD6-8 Jaw Assy. PT #6752-1	PT30303	2	Die Pin
	PT6799	2	Pin
	PT4909-1	2	Die Button
	PT30304	2	Die Pin Spring
	PT4902	2	JawLink
	PT4903-1	2	Link Bolt
	PT4914	2	Flexloc Thin Nut
Adjustable Frame Assy.	PT4994	1	Handle, WADJ. Screws
Non-Adjustable Frame Assy.	PT4995	1	Handle, Fixed
Hardware	PT4904-1	3	Splined Shank Frame Bolt
	PT4915	3	Flexloc Thin Nut
			ACCESSORIES
1 Die Button Repair kit PT #4931-1	PT4909-1	2	Die Button
	PT30303	2	Die Pin
	PT30304	2	Die Release Spring
Misc.	MD6OMI	1	Operating & Maintenance Instruction Manual

1 NOTE: If Die Button Assy. is requested Part No.4931-1 (two die button assemblies) will be supplied.

TOOL OPERATION PROCEDURE

Only crimp dies and accessories designed and manufactured by BURNDY® are recommended for use with the BURNDY® MD6 HYTOOL™. Use of non-BURNDY®, non-conforming products with the BURNDY® MD6 HYTOOL™ shall be deemed abuse and will void the warranty.

Call BURNDY® Technical Services at 1-800-346-4175, with any application questions if in doubt.

1. Select the proper dies for the connector to be crimped. (Refer to the BURNDY® Master Catalog.)
2. Check die recommendation chart for compatibility with MD6. If recommended, refer to catalog and chart for number of crimps required for proper installation.
3. Install dies in jaws making certain that they are properly secured by the spring loaded, positive lock, die buttons.
4. **IMPORTANT** - To help minimize hand and arm fatigue and perceived handle force during use, it is recommended to hold the MD6 HYTOOL™ with your hands at the end of the handles.
5. Insert conductor into the connector and align the tool and die on the connector. Start in the center for splices and “H” frames, and on the end, nearest the pad, for terminals.
6. Operate the tool by closing, and allowing, the handle butt/stop blocks to touch. Normally a “pop” will be heard as the tool goes over center after the crimp is made.
7. Continue crimping the connector until the correct number of crimps have been completed. Work from the center to the outer edges for splices and “H” frame connectors, alternating sides if possible, for the best compression connection.
8. Reposition tool for next crimp, if required. Unless non-bowing dies are used, it is recommended that the tool

be rotated 90° for each adjacent crimp on large splice connections.

CARE & MAINTENANCE

Your MD6 TYPE HYTOOL™ has been thoroughly tested and lubricated by the factory. Extended trouble-free service can be assured by following these simple steps:

1. Keep the tool clean at all times. Remove dirt, debris, and other foreign substances from external surfaces daily, to help prevent corrosion and damage to the tool and mechanism.
2. Lightly lubricate every two (2) months with a good grade machine oil in between the handle pivots and all rubbing surfaces as needed.
3. Store the tool in either the optional tool bag or metal



carry case, when not in use. Keep in a dry, moisture free area.

CLEANING RECOMMENDATIONS:

1. Spray jaws with CHEM-Clean™, or equivalent, solvent to loosen contaminants.
2. Using a stiff fiber brush, (never metal) remove contaminants in and around jaw mechanism and allow solvent to drain off tool.
3. Use air nozzle to remove any solvent residue.
4. Lubricate according to Care & Maintenance instructions.

TOOL VARIATIONS:

MD6 Standard MD6 with permanent “BG (5/8”) and “D3” grooves.

MD6-6 “Snub-Nose” variation of MD6 has a permanent “D3” groove in jaw. Recommended for use where space for tool jaw is limited.

MD6-37 Permanent 161,162,163, & 171 dies

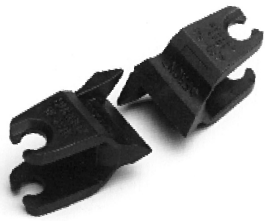
MD6-38 Permanent K, BG, & C dies in jaw

ACCESSORIES:



Vinyl Covers for MD6 and MD6-8 Jaws Part MD6-CP1

Laminated vinyl covers help protect MD6 and operator against accidental brush contact with energized conductors without obstructing vision. Covers snap easily into place over jaw edges. Supplied in set of two covers.



CABLE CUTTER DIES Catalog No. W28K

Permits use of MD6 as cable cutter. Range: #4-4/0 ACSR aluminum or copper.



Neoprene Cover For MD6-6 Jaws Part 6744

Semi-rigid Neoprene cover designed to help protect MD6-6 and operator against accidental brush contact with energized conductors. Field installed.



“Non-Bowing” Dies For Installing UNISPLICE™ Catalog Nos. W-687, & W-702

Install one-piece, full tension sleeves on ACSR without bowing. Range: W-687 installs YDS4RL and YDS2RL. W-702 installs YDS021RL and YDS25RL.



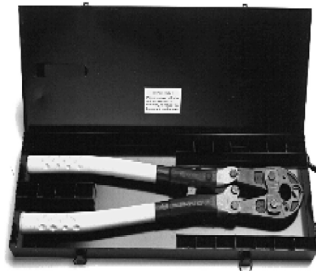
CASEWDIES Part 10097050

Plastic Case, Holds 12 sets of W-Dies



CARRYING BAG Part 4925

Sturdy canvas bags for storage and protection of MD6 tools, and variations, and 9 die sets.



CARRYING CASE Part 4952-1

Provides storage and protection for MD6 tools, with or without covers and 18 die sets. Tool and die sets not included.

For more information write or call:

BURNDY® TOOL SERVICE CENTER

150 Burndy Road

Littleton, NH 03561 USA

or call, toll free 1-800-426-8720

ToolRepair@burndy.com

Reorder Form 3019

Rev. H

Item #464750