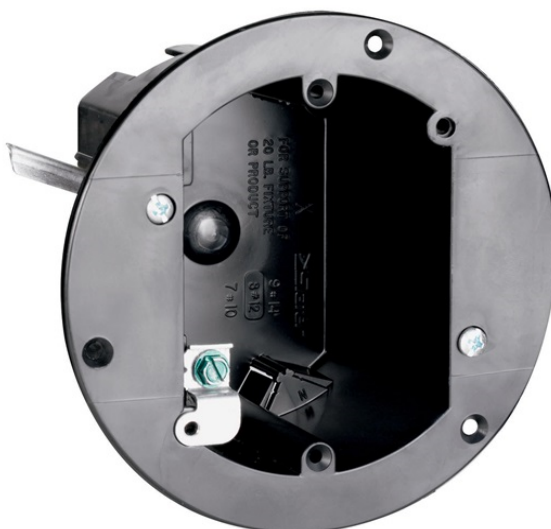


## 3 3/4" Round Old Work Ceiling Box

C118WGAC



3 3/4" Round Old Work Ceiling box with Swing brackets for mounting that adjust from 1 1/4" down to 1/8". Four Auto/Clamps and Grounding Lug. Includes device mounting holes. 50 pack.



### features & benefits

- Box designed so mounting strap of the device, with plaster ears removed, fits flush, allowing use of standard depth wall plate without unsightly gap between plate and wall surface.
- Swing out wing brackets permit installation of box in wall with 1 1/4 inch thick wallboard down to 1/8 inch thick paneling.
- New longer swing brackets have greater reach to clamp onto oversize cutouts.
- Made of high impact thermoplastic.
- Combination slotted/Phillips head swing bracket screws.
- Include exclusive Auto/Clamp feature.
- Available in ceiling box versions.
- Includes device mounting holes.

### specifications

#### General Info

Size: 3 1/4"

Type: Ceiling Box

Special Features: Round

#### Listing Agencies/Third Party Information

CSA Listing Info: No

CUL Listing No: No

cULus: No

cURus: No

Federal Spec: No  
UL Listing No: Yes  
UN SPS C: 39121308  
UR: No

### **Dimensions**

Depth U S: 2.6875  
Diameter U S: 3.75  
Volume: 18.0

### **Technical Information**

Material: Plastic  
Mounting: Captive mounting nails  
Shape: round

### **Buy American Act Compliance**

Country of Origin: UNITED-STATES-OF-AMERICA  
Buy American Act Status: Buy American Act Compliant