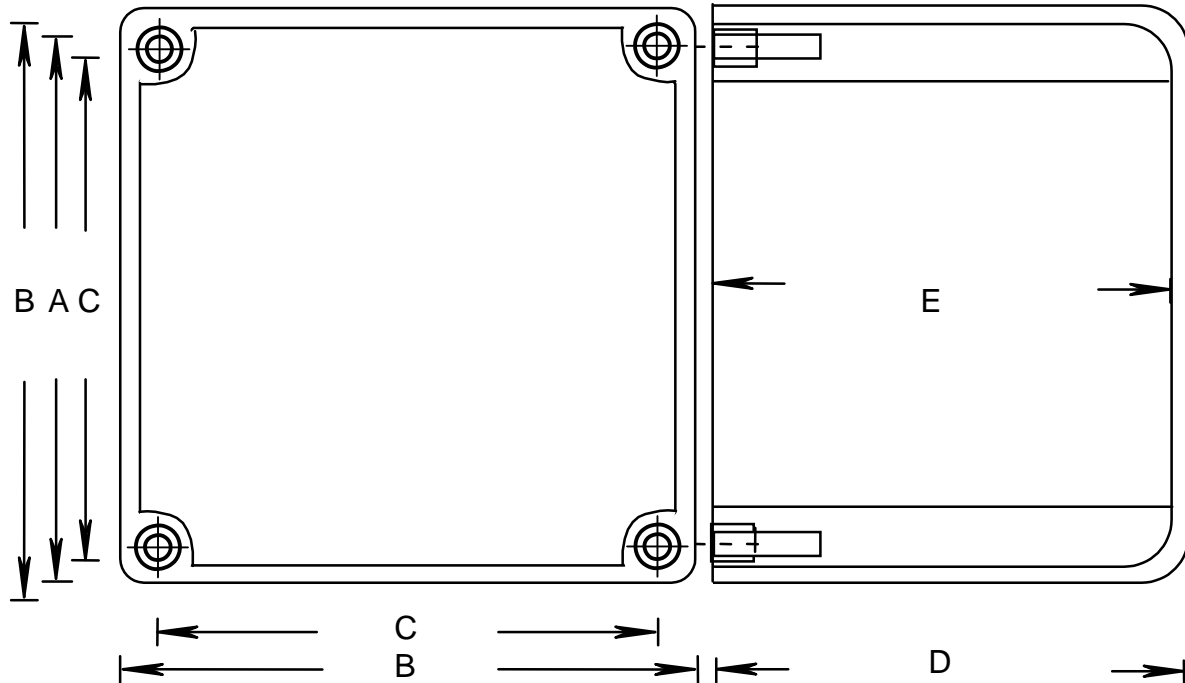


RIGID PVC CONDUIT FITTINGS

JB444 JUNCTION BOXES

ISSUE DATE:
DATE D'EMISSION: 2009 04 30

SUPERCEDES:
REPLACE: 2004 07 15



PRODUCT CODE	PART NUMBER	NOMINAL SIZE		A		B		C	
		(in)	(mm)	(in)	(mm)	(in)	(mm)	(in)	(mm)
076668	J444 STAHLIN	4	103	3.675	93	4.000	102	3.450	88
076259	AMJB444 ALLIED	4	103	3.675	93	4.000	102	3.450	88
077643*	2037-424T CANLET	4	103	3.675	93	4.000	102	3.450	88
077696	JB 444	4	103	4.000	101	4.395	112	3.950	101

PRODUCT CODE	PART NUMBER	NOMINAL SIZE		D		E		VOLUME	
		(in)	(mm)	(in)	(mm)	(in)	(mm)	(cu. In)	(cu. Cm)
076668	J444 STAHLIN	4	103	4.180	106.	3.850	98	51.5	844.6
076259	AMJB444 ALLIED	4	103	4.180	106	3.850	98	51.5	844.6
077643*	2037-424T CANLET	4	103	4.180	106	3.850	98	51.5	844.6
077696	JB 444	4	103	4.170	106	3.930	100	51.5	844.6

PRODUCT CODE	PART NUMBER	NOMINAL SIZE		GASKET CODE	INSERT CODE	SCREW CODE	M.FEET CODE
		(in)	(mm)				
076668	J444 STAHLIN	4	103		072538 (4)		
076259	AMJB444 ALLIED	4	103		072538 (4)		
077643*	2037-424T CANLET	4	103		072538 (4)		
077696	JB 444	4	103	097731	072538 (4)	072522 (4)	097747
					072539 (2)	072513 (2)	

* BOX WITH MOLDED MOUNTING FEET, INSERT ONLY; NO COVER, OR GASKET, UL LISTED 576J

COVER DIMENSIONS

