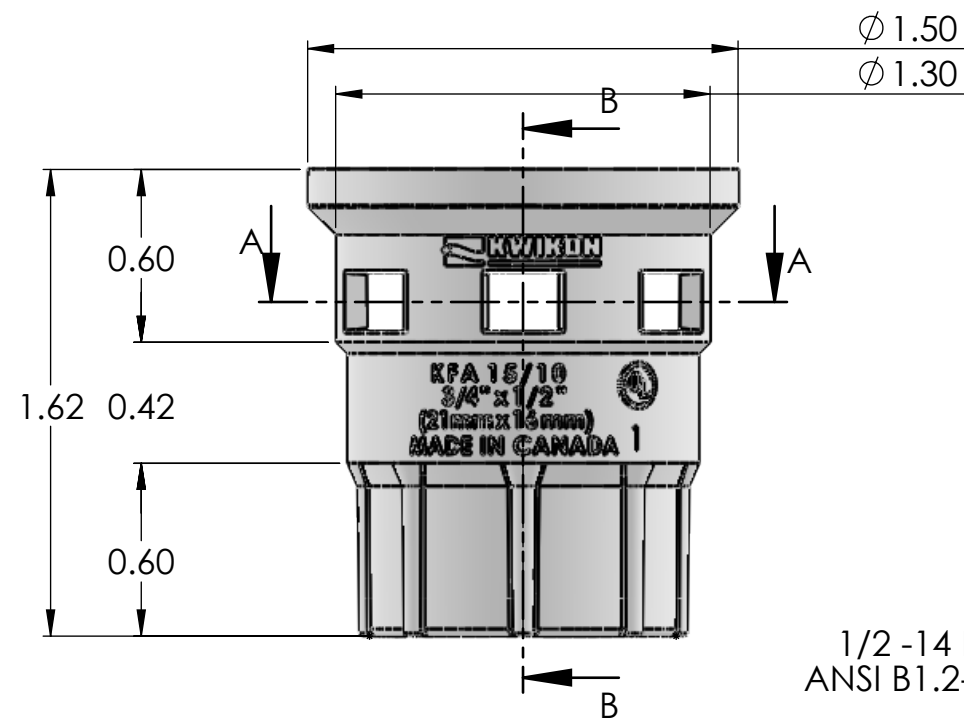
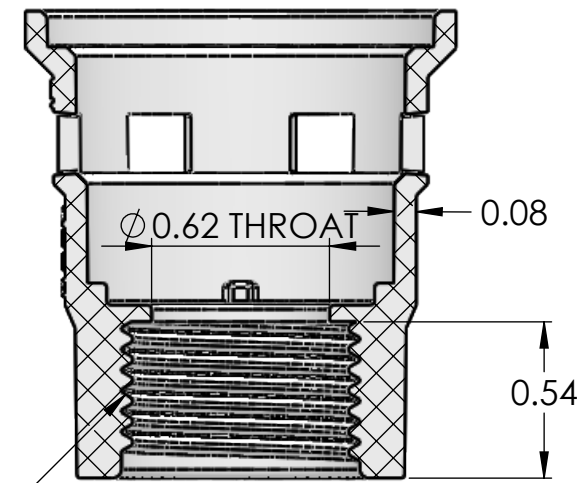


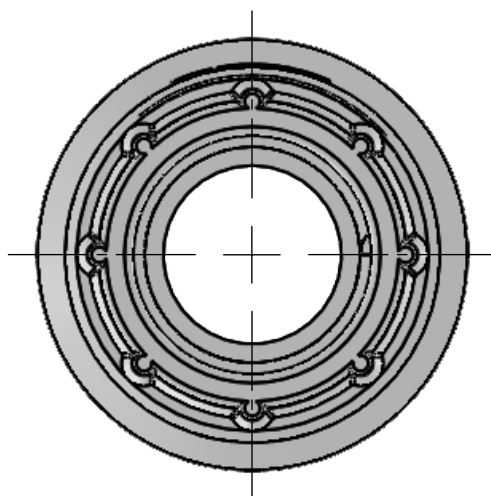
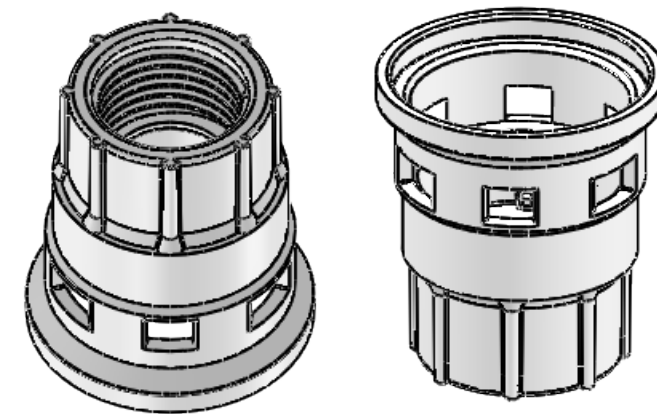
SECTION A-A



1/2 -14 NPSM
ANSI B1.2-.1-1983



SECTION B-B



SIZES SHOWN ARE FOR REFERENCE
3D MODEL IS TO BE USED FOR
MANUFACTURING / VERIFICATION

PLASTIC/RUBBER SIZES

PART WEIGHT: 1.3 g at 11.5 g/cm ³ DENSITY. PART WEIGHT MAY VARY DEPENDING ON MATERIAL, GRADE AND MOLDING CONDITIONS PROJECTED AREA, ONE PART WITH SHRINKAGE APPLIED: Sq. In. SHRINKAGE: 0.5%		REV.	REVISION DESCRIPTION	ECN No.	INT.	DATE
ALL CHANGES MUST BE APPROVED AND RECORDED BY ENGINEERING						
UNIT: INCHES	PROJECTION					
THIS DRAWING AND ALL TECHNICAL INFORMATION APPEARING HEREON ARE PROPERTY OF IPEX TECHNOLOGIES INC. AND MUST BE KEPT IN CONFIDENCE BY THE RECIPIENT. THE SAME MAY NOT BE USED OR REPRODUCED EITHER IN WHOLE OR IN PART WITHOUT THE EXPRESS CONSENT OF IPEX TECHNOLOGIES INC.		TITLE: Kwinkon Connector 3/4" ENT to 1/2" FA AC90				
PAPER SIZE: ANSI B	NAME: Vincent Tao	DATE: August 24, 2018	SCALE: NTS	MATT: PVC 5018		
PART APPEARANCE: COLOR: Grey	DRAWN: Vincent Tao	APP'D: Vincent Tao	DIMENSIONS ARE IN INCHES (UNLESS OTHERWISE SPECIFIED) FRACTIONAL: ± 1/32 .XX: ± 0.015 .XXX: ± 0.010 .XXXX: ± 0.005 ANGULAR: ± 1.0			
SURFACE FINISHES: (UNLESS OTHERWISE NOTED)		INSIDE: OUTSIDE: OTHER:		PRODUCT CODE: 089079 PROJECT No. SGE-154		
FILENAME: 089079 - Kwinkon AC90 Fitting (c) FOLDER:						