

Rittal – The System.

Faster – better – everywhere.

► Support section CP 120 open – CP 6212.110

Date : May 24, 2018

ENCLOSURES

POWER DISTRIBUTION

CLIMATE CONTROL

IT INFRASTRUCTURE

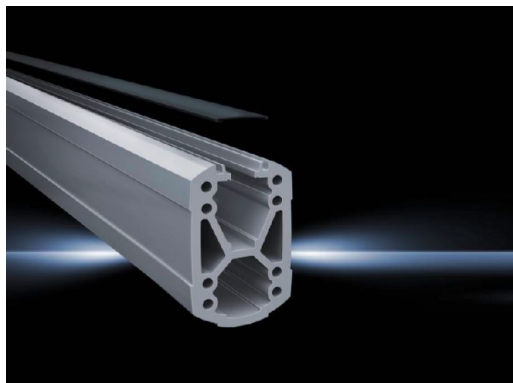
SOFTWARE & SERVICES

FRIEDHELM LOH GROUP



Support section CP 120 open – CP 6212.110

created: 24.05.2018 build on www.rittal.com/us-en



Product description

Description: Attached to the connection components with 4 self-tapping screws in the screw channel. May be cut to any required length, no thread-tapping required. Open cable duct for easy servicing access and for pre-assembled cables with connectors; lockable via cover profile. X-shaped profiling for greater load capacity, large cable routing channels. Upper channel suitable for cables with large connectors (e.g. DVI or VGA) and available/usable throughout the entire system.

Material: Support section: Extruded aluminum section
Cover: Plastic

Color: Support section: RAL 7035
Cover: RAL 7024

Supply includes: Support section
Clip-in lid

Product features

Dimensions: Height: 120 mm (4.7 ")
Width: 75 mm (3 ")

Length: 1000 mm (39 ")

Packaging unit: 1 pc(s).

Weight/packaging unit: 9.2 kg (20.3 lb.)

EAN: 4028177683976

Customs tariff number:	76042100
ETIM 6.0:	EC000882
ETIM 5.0:	EC000882
eCl@ss 8.0/8.1:	27400556
eCl@ss 7.0/7.1:	27189261
eCl@ss 6.0/6.1:	27189261
eCl@ss 5.1/5.1.4:	27189248
Product description (long):	CP Support section CP 120, open, L: 1000 mm
Approvals	
Declarations:	Manufacturer's declaration