

Rittal – The System.

Faster – better – everywhere.

E-Box EB Carbon steel – EB 1753.500

Date : May 24, 2018

ENCLOSURES

POWER DISTRIBUTION

CLIMATE CONTROL

IT INFRASTRUCTURE

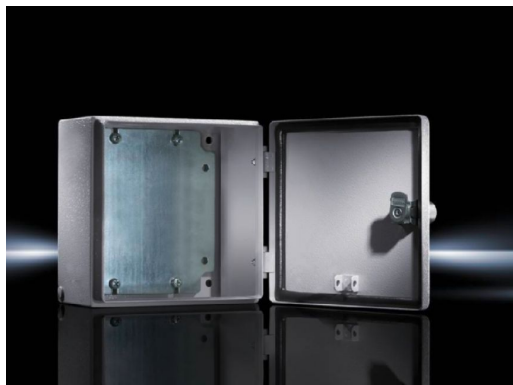
SOFTWARE & SERVICES

FRIEDHELM LOH GROUP



E-Box EB Carbon steel – EB 1753.500

created: 24.05.2018 build on www.rittal.com/us-en



Product description

Material:	Housing and door: Carbon steel, all-round foamed-in PU seal
Surface finish:	Housing and door: Dipcoat primed, powder-coated on the outside, textured paint Mounting plate: Zinc-plated
Color:	RAL 7035
Protection category IP to IEC 60 529:	IP 66
Protection category NEMA:	NEMA 4
Supply includes:	Housing with hinged door 180° hinge Cam lock with 3 mm double-bit insert Mounting plate

Product features

Dimensions:	Height: 300 mm (12 ") Width: 250 mm (9.8 ") Depth: 155 mm (6.1 ")
Material thickness::	Housing: 1.5 mm (0.06 ") Door: 1.5 mm (0.06 ")
Door catch:	right
Packaging unit:	1 pc(s).

Weight/packaging unit:	5 kg (11 lb.)
-------------------------------	---------------

EAN:	37463
-------------	-------

Approvals

Approvals:	Bureau Veritas CSA Lloyds Register of Shipping Russian Maritime Register of Shipping TÜV UL
-------------------	---
