

Rittal – The System.

Faster – better – everywhere.

E-Box EB – EB **1551.500**

Date : May 24, 2018

ENCLOSURES

POWER DISTRIBUTION

CLIMATE CONTROL

IT INFRASTRUCTURE

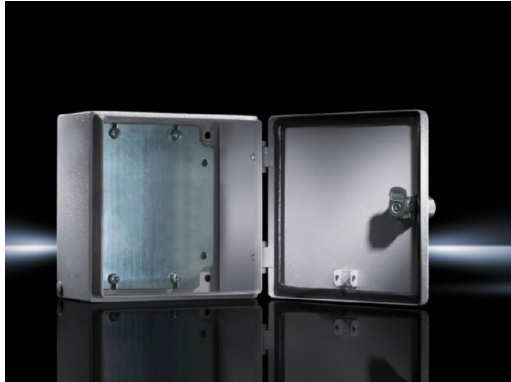
SOFTWARE & SERVICES

FRIEDHELM LOH GROUP



E-Box EB – EB 1551.500

created: 24.05.2018 build on www.rittal.com/us-en



Product description

Material:	Housing and door: Carbon steel, all-round foamed-in PU seal
Surface finish:	Housing and door: Dipcoat primed, powder-coated on the outside, textured paint Mounting plate: Zinc-plated
Color:	RAL 7035
Protection category IP to IEC 60 529:	IP 66
Protection category NEMA:	NEMA 4
IK code:	IK08
Supply includes:	Housing with hinged door 180° hinge Cam lock with 3 mm double-bit insert Mounting plate
Base material:	Carbon steel

Product features

Dimensions:	Height: 150 mm (5.9 ") Width: 150 mm (5.9 ") Depth: 80 mm (3.1 ")
Material thickness:	Housing: 1.25 mm (0.05 ") Door: 1.25 mm (0.05 ") Mounting plate: 2 mm (0.08 ")

Mounting plate:	Height: 135 mm (5.3 ") Width: 125 mm (4.9 ")
Lock version:	Cam
No. of locks:	1
Lock Insert:	3 mm double-bit
Packaging unit:	1 pc(s).
Weight/packaging unit:	1.7 kg
EAN:	4028177251670
Customs tariff number:	94032080
ETIM 6.0:	EC002713
ETIM 5.0:	EC000261
eCl@ss 8.0/8.1:	27180101
eCl@ss 7.0/7.1:	27180101
eCl@ss 6.0/6.1:	27180101
eCl@ss 5.1/5.1.4:	27180102
Product description (long):	EB E-Box, WHD: 150x150x80, Sheet steel, with mounting plate, with door
Approvals	
Approvals:	Bureau Veritas C-UL CSA Lloyds Register of Shipping RRR Russian Maritime Register of Shipping TÜV UL UL + C-UL
Certificates:	EAC IK-Code
Declarations:	Declaration of conformity