

Rittal – The System.

Faster – better – everywhere.

► Component shelf, pull-out for TS, SE, PC, IW – IW 6902.960

Date : May 25, 2018

ENCLOSURES

POWER DISTRIBUTION

CLIMATE CONTROL

IT INFRASTRUCTURE

SOFTWARE & SERVICES

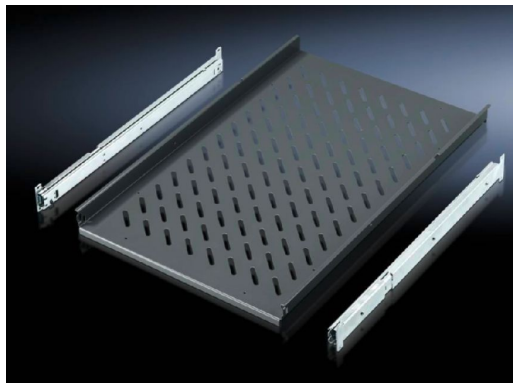
FRIEDHELM LOH GROUP



Component shelf, pull-out for TS, SE, PC, IW – IW

6902.960

created: 25.05.2018 build on www.rittal.com/us-en



Product description

Description:	For direct mounting on the vertical TS enclosure section.
Applications:	On the vertical TS, SE enclosure section
Material:	Carbon steel
Color:	RAL 7015
Supply includes:	2 telescopic slides.
Note:	For enclosures without a mounting plate
Note on Model No.:	May also be installed in 800 mm deep enclosures based on TS (pull-out rear attachment).

Product features

Suitable for:	Enclosure type: TS Enclosure type: PC Enclosure type: IW Width: 600 mm (24 ") Depth: 600 mm (24 ") Depth: 800 mm (31 ")
Support area:	Width: 465 mm (18 ") Depth: 545 mm (21 ")
Load capacity:	30 kg surface load, static

Packaging unit:	1 pc(s).
Weight/packaging unit:	7.8 kg (17.2 lb.)
EAN:	4028177289864
Customs tariff number:	94039010
ETIM 6.0:	EC002620
ETIM 5.0:	EC002620
eCl@ss 8.0/8.1:	27189261
eCl@ss 7.0/7.1:	27189261
eCl@ss 6.0/6.1:	27189261
eCl@ss 5.1/5.1.4:	27189218
Product description (long):	IW Component shelf, pull-out, for TS, SE, PC, IW, for enclosure depth 600 mm