

Rittal – The System.

Faster – better – everywhere.

► Mounting Components for conduit mounting – SG 2374.050

Date : May 24, 2018

ENCLOSURES

POWER DISTRIBUTION

CLIMATE CONTROL

IT INFRASTRUCTURE

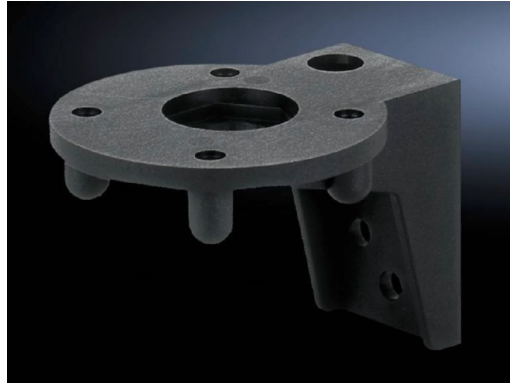
SOFTWARE & SERVICES

FRIEDHELM LOH GROUP



Mounting Components for conduit mounting – SG 2374.050

created: 24.05.2018 build on www.rittal.com/us-en



Product description

Version: Angle bracket for pipe mounting

Color: Black

Product features

Installation options: On LED compact signal pillar in conjunction with connection adapter 2372120
On modular signal pillar in conjunction with connection component 2368000

Suitable for signal pillar: LED compact modular

Packaging unit: 1 pc(s).

Weight/packaging unit: 0.06 kg (0.1 lb.)

EAN: 4028177219878

Customs tariff number: 39269097

ETIM 6.0: EC001259

ETIM 5.0: EC001153

eCl@ss 8.0/8.1: 27371234

eCl@ss 7.0/7.1:	27371235
eCl@ss 6.0/6.1:	27371235
eCl@ss 5.1/5.1.4:	27371220
Product description (long):	SG Mounting component for conduit mounting, for signal pillar, modular and LED-compact, Angle bracket for conduit mounting
Approvals	
Certificates:	EAC