

Rittal – The System.

Faster – better – everywhere.

Wall mounting bracket for KS – KS 1483.010

Date : May 24, 2018

ENCLOSURES

POWER DISTRIBUTION

CLIMATE CONTROL

IT INFRASTRUCTURE

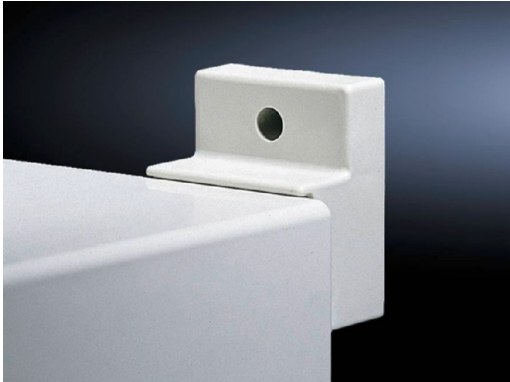
SOFTWARE & SERVICES

FRIEDHELM LOH GROUP



Wall mounting bracket for KS – KS 1483.010

created: 24.05.2018 build on www.rittal.com/us-en



Product description

Description:	To enable wall-mounting of the enclosure from the outside of the enclosure only.
Material:	Fiberglass-reinforced polyamide
Color:	Similar to RAL 7035
Supply includes:	Assembly components for mounting on the enclosure.

Product features

Suitable for:	Enclosure type: KS
Installation options:	For external mounting on the housing
Packaging unit:	4 pc(s).
Weight/packaging unit:	0.23 kg (0.5 lb.)
EAN:	4028177526808
Customs tariff number:	39269097
ETIM 6.0:	EC002625
ETIM 5.0:	EC002625

eCl@ss 8.0/8.1:	27189234
-----------------	----------

eCl@ss 7.0/7.1:	27182405
-----------------	----------

eCl@ss 6.0/6.1:	27182405
-----------------	----------

eCl@ss 5.1/5.1.4:	27189234
-------------------	----------

Product description (long):	KS Wall mounting bracket, for KS, similar RAL 7035
------------------------------------	--

Approvals	
------------------	--

Certificates:	EAC
----------------------	-----
